

SEPT - MEETING AGENDA

DATE:

TUESDAY, SEPT. 13, 2022

WHERE:

IN-PERSON ONLY

**Plumbing Industry Training Center
in Troy, MI**

5:00 PM - 5:50 PM

Types of Valves and Where to Use Them

5:50 PM - 6:15 PM

Vendor Table Top Presentations

6:15 PM

Dinner Service

6:30 PM - 7:30 PM

**Digital Mixing Valves: Raising the Bar
for Safer Domestic Hot Water System
Design and Distribution**

REGISTRATION REQUIRED

IN-PERSON: <https://www.eventbrite.com/e/aspe-emc-september-2022-technical-program-tickets-407400996347>

SEE INSIDE COVER FOR TABLE OF CONTENTS

From William Grayzar, CPD, GPD President of ASPE EMC



I hope you all had a wonderful summer and enjoyed some much-needed time off. Perhaps you took a vacation, attended a special event, spent time with family and friends, and/or just simply enjoyed a backyard barbecue. I would like to thank the EMC Chapter Board who took time out of their summer to prepare a great year of programs for its members.

By now you should have received the 2022-2023 Program for EMC -ASPE. If not, it can be found on the chapter website at <https://www.aspe.org/eastern-michigan/program.html>. Our first chapter meeting will be September 13, 2022, at 5:00 pm at the Plumbing Industry Training Center (PITC). Our Design Class for September, beginning at 5:00 PM, will cover Types of Valves and where to use them. This will be following by dinner and tabletop discussions with vendors our Technical Session covering common issues in the field with Digital Mixing valves.

Beginning with our October 11, 2022, chapter meeting, EMC-ASPE along with the PITC will hosting a series seven (7) Plumbing Venting Design Classes from 5:00 pm to 5:50 pm each month, with the exception of January 2023. The design classes are intended to be a step-by-step review of Chapter 9 of the International Plumbing Code (IPC). Members who attend all seven (7) venting classes will receive a free soft cover copy of "Plumbing Venting Decoding Chapter 9 of the IPC" second edition by Bob Scott. The book will also be available for sale, should you choose to purchase on your own, at each chapter meeting or you can order directly using the form located at:

https://www.aspe.org/eastern-michigan/PDF/2018%20Code%20Study%20Development%20Order%20Form_Template_10-19-21.pdf

If you are attending the 2022 ASPE Covention in Indianopolis make sure you stop by Booth 2121 on the Convention show floor and check out the EMC-ASPE sponsored event ASPE Racing at Indy. The actual race is scheduled to begin at 8:15 AM on Tuesday, September 20, 2022.

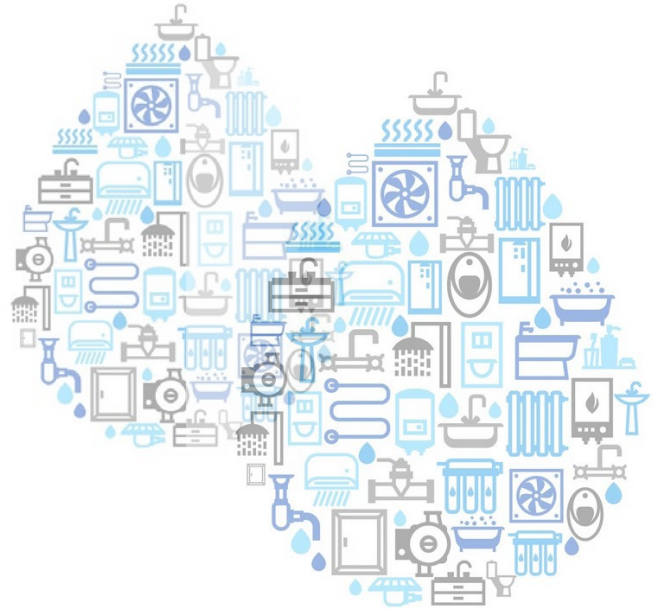
I look forward to seeing you at the Plumbing Industry Training Center on September 13, 2022.

Bill

NOTICES

Contents

President's Report	1
2022 ASPE Convention & Expo	2
Program	3
In The Know	4
Member Spotlight	5
VP Technical Report	6
ASPE EMC Golfing Event	6
WOA + Young Professionals Event	7
VP Membership Report	8
Mentorship	17
Code Study & Development Books	19
Line Card Sponsors	20 - 21



ASPE EASTERN MI CHAPTER EVENT!
Joint Event with Women of ASPE and ASPE Young Professionals

See Flyer in this Newsletter pg. 7
Wednesday, 9/7/22, 4:30 - 9:30 PM
For more info click [HERE](#)

SEPTEMBER BOARD MEETING

Virtual Online Meeting
Tuesday, 9/6/22, 4:30 PM

SEPTEMBER PROGRAM

In-Person Only
Tuesday, 9/13/22, 5:00 - 7:30 PM

ASPE IS ACCEPTING APPLICATIONS
FOR THE ALFRED STEELE SCHOLARSHIP

Contact ASPE National for more information at
(847) 296-0002, or email info@aspe.org

[CLICK HERE FOR MORE INFORMATION](#)

ASPE Convention & Expo **2022**
Indianapolis // September 16-21

**LATEST NEW MEMBER
~ WELCOME ~**

**JAKE JANKOSKA
SUBHASH PAPPAGARI
ALEXANDER COSTAKIS
RYAN LEVI LYLE**

SEPTEMBER DESIGN SESSION

5:00-5:50 PM

TOPIC: Types of Valves and Where to Use Them

This presentation covers valve styles, sizes, materials, and applications. The program displays the standards and designs that have changed in our industry while informing the audience as to advancements that have been made from manufacturers. The goal of the presentation is to enlighten the audience about what valve to use in certain applications.



Bob Thomas

Presenter: **BOB THOMAS**,
Diversified Spec. Sales, Inc.

Bob has worked in the plumbing and heating industry for more than 45 years, starting in the warehouse and moving up to outside sales. He is now a specialist on products from a number of different manufactures, including Jomar Valves. As a member of the DSS Sales Team, representing a number of manufactures

for the state of Michigan and Northwest Ohio, Bob helps engineers, architects and facilities with product selection, training and trouble shooting.

SEPTEMBER TECH SESSION

6:30-7:30 PM

TOPIC: Digital Mixing Valves: Raising the Bar for Safer Domestic Hot Water System Design and Distribution

This presentation will feature an introduction as an overview to Digital Mixing Valves. We will look into the feature packed Digital Valves now available in the marketplace and as to how they can help designers achieve better results towards compliance and safety issues by using these new technologies. We will compare conventional technologies to the new Digital Valves and show some of the comparisons in the field (old versus new) with regards to installation, piping and setup and try to show how the new technology is truly revolutionizing hot water design.



Rick Cota

Presenter: **RICK COTA**,
Leonard Valves

Rick Cota is the President of Leonard Valve Company and serves as a liaison in the areas of marketing, sales, technical, staffing, and customer service. He is responsible for providing direction to and completion of tasks and projects for Engineering Department, Quality Control Department and Leonard Technical Ser-

vice Departments and responsible for establishing and achieving goals and project timelines. He has daily interaction with National and International Product Representatives including Technical Field Service problem solving and resolution, in addition to sales and/or pricing issues, concerns or questions. He also organizes and executes programs to maintain product and facility compliance with outside agencies including but not limited to: American Society for Sanitary Engineers, Canadian Standards Association, Canadian Universal Plumbing Code, Environmental Protection Agency, Department of Environmental Management.

New This Year:

Venting Classes - attend all 7 to earn a venting design manual.

About Registration and CEUs:

You will need to register using an Eventbrite link that will be in the email. This allows us to know how many people we can expect. We require sign in/sign out sheets and your CEUs will be submitted to national within 1 week of our event. It may take up to another 2 weeks for the CEUs to show in your ASPE Education log. The PITS does have guest protocols we will have to obey in order to meet there, so please follow all posted signage and procedures.

IN THE KNOW

EMC 45TH ANNIVERSARY HISTORY BOOK IS STILL AVAILABLE!

Cost for printed book - \$50, check or credit card accepted

Pick up @ SES or during a chapter meeting

FREE digital download on the ASPE EMC website.

TABLE TOP SPONSORSHIP PRICING

ASPE Members

- \$200.00 for the 1st table per meeting/per vendor
- \$150.00 for each additional table per meeting/per vendor

Non-Members

- \$250.00 for the 1st table per meeting/per vendor
- \$200.00 for each additional table meeting/per vendor

If a vendor purchases table tops for 3 meetings during the year, a 4th meeting table top will be provided for free.





Commercial Washrooms. Brought to Life.
HANDWASHING & DRYING | ACCESSORIES | PARTITIONS | LOCKERS

CUTTING-EDGE HANDWASHING TAKES SHAPE

The next generation WashBar raises your restroom to new heights by providing touch-free soap, water and drying in an edgy new design for an unforgettable handwashing experience. The single connection point to the sink provides an impressive design element and creates more open space for cleaning.

ADVANTAGES OF THE WASHBAR

- Floating design for a simple and clean aesthetic
- Single connection point to the sink for easier cleaning
- Eliminates the cost and mess of paper towels
- Icons and LED lights to visually orient users
- Smart sensor technology eliminates false activations
- WashBar and bowl work together to keep water in the basin
- Gallon soap capacity to reduce the number of replacements
- Captures soap and water activations for maintenance planning

The new WashBar WB2 is available with the Verge® LVQ basin in Evero® natural quartz, OmniDeck® 5010 in Terreon® solid surface, or pair with a Terreon solid surface or Evero natural quartz undermount basin with the deck or countertop of your choice.





AVAILABLE IN SIX BEAUTIFUL FINISHES








ALL-IN-ONE WASHBAR



All the fundamentals of handwashing have been thoughtfully designed into Bradley's Innovative WashBar.

WASHBAR FEATURES

CLEAN

- Touch-free activation
- Low level LED Indicator
- Gallon (3.8 L) soap capacity
- Simply replace soap tank – no cleaning or refilling
- Liquid and foam soap

RINSE

- Touch-free activation
- 0.5 GPM (1.9 LPM)
- Ultra-high efficient 0.35 GPM (1.4 LPM) option where water conservation is a necessity

DRY

- Touch-free activation
- Heated air stream dries hands quickly and efficiently
- Adjustable speed for quieter hand drying

bradleycorp.com/washbar

WEST MICHIGAN
Michael Zago
D (248) 960-1147 x 107
C (616) 293-2121
E mikez@newcenturysales.com

WEST MICHIGAN
Rod Cox
D (248) 960-1147 x 116
C (616) 706-1481
E rodc@newcenturysales.com

EAST MICHIGAN
Todd Hiller
D (248) 960-1147 x 106
C (616) 633-2609
E toddh@newcenturysales.com

EAST MICHIGAN
Ross Beck
D (248) 960-1147 x 115
C (734) 673-2119
E rossb@newcenturysales.com

www.newcenturysales.com

A TOTAL, STATE-OF-THE-ART HOT WATER SYSTEM, ENGINEERED TO DELIVER A SUPERIOR LEVEL OF USER SAFETY, INFECTION CONTROL AND COMPLIANCE, FROM MECHANICAL ROOM TO THE POINT OF USE.





ABH

GAS-FIRED WATER HEATING

Leading-edge gas-fired institutional hot water generation, built for reliability, efficiency and durability.



THE BRAIN®

THE BRAIN® DIGITAL RECIRCULATION VALVE

Digital hot water temperature control that delivers unparalleled accuracy, stability and safety to mitigate the risk of Legionella and scalding.



RADA DIGITAL FAUCET

RADA DIGITAL FAUCETS

Hands-free, programmable, point-of-use fixtures have The Brain's digital technology built in, and offers thermal disinfection, duty flush, bacterial-resistant design and ASSE 1070 compliance.



ABH

SAGE® SMART HOT WATER SYSTEM MONITORING AND REPORTING

Advanced software provides regular updates, documentation, custom-filtered reports, and real-time alerts for compliance with industry guidelines and Standards of Care.



SAGE® MONITORING



PROGRAMMABLE OPERATION AND FLOW CONTROL



Chip.bidigare@merloenergy.com
(586) 256 - 9822



MEMBER SPOTLIGHT

Eastern Michigan Chapter Members,

Please join me in congratulating Eastern Michigan Chapter member Rachel Gendich for completing the Christopher Kelley Leadership Program through AIA Detroit! This is a selective year-long program that nurtures 16 individuals, helping to create the next generation of leaders with skills such as entrepreneurship, negotiation, community leadership, and industry culture. Prospective participants must go through an application process for selection where proven career success, community involvement and the individual's firm support are considered.

Congratulations Rachel!

Bill



VP Technical Report

Pam Hartsell, CPD, PMP



Hello Eastern Michigan!

I'm excited to be serving our Chapter again this year, this time as your Vice President Technical. I'm thankful for the opportunity, and sincerely looking forward to another fantastic year with my fellow ASPE EMC members.

Your Chapter Board Members stayed busy over the summer planning another great line-up of design classes and technical presentations. This season our chapter meetings will feature a series of classes on venting, taught by our very own Mike Melaragni. New this year, we'll be offering anyone who attends all 7 classes a free book on venting design from the ASPE bookstore!

We'll be going back to basics with a couple of "Design 101" presentations on valves and natural gas design.

We'll be looking at some new technologies like hybrid fire extinguishing systems, and reviewing changes to the plumbing, mechanical and fuel gas codes.

This year we'll also see live demonstrations of different pipe joining methods and will also hold a panel discussion on water heaters. Check out the full program for all the details!

Although we don't plan to offer any hybrid meetings this year, we will continue to record them and post them for our members and readers on YouTube, so you don't need to worry about missing out on the learning opportunities.

I'm looking forward to another amazing season, Eastern Michigan! Thanks again for allowing me the opportunity to serve!

Your Chapter VP Tech,
Pam Hartsell
vpt.aspe.emc@gmail.com



**Coming Soon!
EMC's First Annual
Golf Outing!**

Please let us know if you're interested in serving on our Golf Committee or if you'd like to sign up as a sponsor!!

Please Contact Josh Pedraja; vpm.aspe.emc@gmail.com



**Joint
Event!**

**Women
of ASPE** & **ASPE
YOUNG
PROFESSIONALS**

September 7
4:30 – 9:30 pm



4:30 - 6:45 p.m. @ Lockhart's BBQ
202 E 3rd Street, Royal Oak, MI

7:00 - 8:15 p.m. @ Breakout Escape Rooms
222 E 4th Street, Royal Oak, MI



Feel free to stop by when you can or just meet up with us later.
Whether we escape or not, we will head across the street to The
Royal Oak Brewery afterward for some hopefully celebratory drinks!

Limited availability due to max escape room size of 14.
RSVP today to Theresa Card at tcard@sesnet.com

Sponsored by:



VP Membership Report

Josh Pedraja



Being a member of ASPE has many benefits including:

- » ASPE Plumbing Engineering Design Handbook
- » Bi-monthly subscription to Plumbing Systems & Design magazine
- » ASPEReport (in Plumbing Engineer magazine)
- » Members Only ASPENet Access (includes access to ASPE Data Books chapters)
- » Publications and Education Programs Discounts
- » ASPE Biennial Convention and Exposition (even years)
- » ASPE Biennial Technical Symposia (odd years)
- » Technical Seminars and Workshops
- » Access to Earn Continuing Education Units (CEUs)
- » Technical Books and Manuals (specific to the profession of plumbing engineering).
- » Professional Certification / Recertification
- » Continuing Education Opportunities in Plumbing Engineer magazine
- » Alfred Steele Scholarship Program

- » Local Chapter Affiliation
- » Monthly Chapter Meetings and Technical Seminar Opportunities
- » Networking Opportunities with Plumbing Engineers Worldwide
- » Leadership Opportunities (Board of Directors, Region Chairs, Chapter Officers, Committees)

This month we'll focus on **Technical Seminars and Workshops**. Did you know that as Members you have full access to free webinars? When we all had virtual Chapter Meetings for almost an entire season (and some beyond), you were able to sign up for any other Virtual Chapter Meeting for free and learn about topics that other chapters were presenting on. Now, the only chapter I know that is still virtual is Central Illinois for geographical reasons, but it was a great way to learn even more about mixing valves, venting, hot water heaters, legionella, and other great topics.

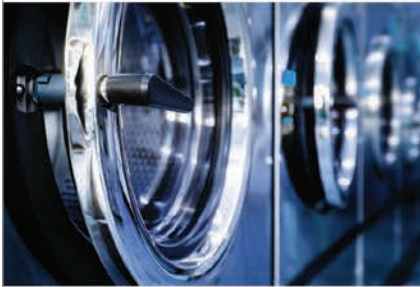
Now that nearly all chapters are back in-person for meetings, there are still some great webinars presented by National that are free for members. It ties into another great benefit of membership with ASPE's Continuing Education. ASPE offers webinars free of charge for members each month on various topics. In August alone, there were 2 scheduled; August 24th and August 30th. If you haven't checked them out yet, we highly recommend doing so as ASPE prides themselves on all the continuing educational programs they offer!

If you are not a member of ASPE yet and are interested, please let us know!

ASHRAE Seeks Public Comments on Addendum to Standard 90.1

[click here for more info](#)

COMMERCIAL POWER AND PERFORMANCE. BRADFORD WHITE QUALITY.



Your commercial customers need exceptional quality, performance, efficiency and reliability. Whether it's a hotel, restaurant, office building, school or industrial facility, Bradford White's proven commercial products deliver for your customers:

- **eF Series® Ultra High Efficiency Commercial Gas Water Heaters** offer up to 97% Thermal Efficiency. They feature BMS integration for remote monitoring for quicker, easier troubleshooting.
- **ElectriFLEX Series™ Commercial Electric Water Heaters** are field-convertible so a single model solves multiple installation requirements.
- **Brute® Series Condensing Hydronic Boilers & Volume Water Heaters** deliver modulation down to 20% of full fire (5:1 turndown) to serve a wide range of commercial water heating and space heating applications.

See our Full Commercial Line at
bradfordwhite.com/commercial

FOR PRO



Represented by: Burke Agency, Inc.



ETV *Platinum Plus*

ELECTRONIC TEMPERING VALVE



Designed for Critical Temperature DHW Application

- Maintains Set Point within +/- 2°F

Safeguard Against High Temperature Conditions

- Optional High Temp Limit Valve
- Alarm Output

Maintenance Free

- Stainless Steel Valve Body reduces Scale Buildup
- External Actuator Eliminates Gasket Maintenance



ETS AND ETS-LT

ELECTRONIC TEMPERING STATION

Pre-wired and Pre-Piped Assembly

- Contains ETV Platinum Plus
- Includes all Fittings, Isolation Valves

Wall Mounted and Floor Mounted

- Minimal Footprint
- Sizes from 3/4" to 4"



Conforms to the following:

ASSE 1017

California Lead Free Plumbing Law

CSA B 125.3 (NSF/ANSI 61 Section 8)



Major Lozuaway and Associates

Mike Ostrowski

1117 W. Grand Blanc Road

Grand Blanc, MI 48439

Phone: 810-287-6983

Email: moski@lozuaway.com

MegaPress® G
Press safer.
Press
bigger.



Connected in quality.

Quick, safe connections on large diameter gas lines.

Viega MegaPress(R)G requires no open flames or added cost of fire watch, so projects are safer and more profitable. Installers can secure gas pipe up to 4" in 16 seconds or less, saving 60-90% on labor costs. That's why professionals choose MegaPressG - the trusted press connection method approved for gas lines ½" to 4".

Carl Petitt
 Technical Manager
 (614) 852-2691
 carl.petitt@viega.us

Michael Norgan
 District Sales Manager
 (989) 415-2431
 michael.norgan@viega.us

ALL-IN-ONE SCALD PROTECTION



420-T Series

Now there's no need to install a thermostatic mixing valve below the sink. The new 420-T Series combines Chicago Faucets durability with integrated scald protection. The result is a solid, easy-to-install restroom faucet that complies with ASSE 1070 requirements. With the 420-T, everything you need to meet current building codes and protect users against scalding is built right into the faucet.

Visit chicagofaucets.com or call your local representative for more information.

Taggart-Knight Group
 248/553-4388
 info@taggartknight.com



Replacing Your Water Heater Every Few Years is Not Our Business Plan



Conquest[®] condensing, gas-fired water heaters are constructed from AquaPLEX[®] duplex stainless steel so they're corrosion-resistant in potable water at any temperature. Available in 199-1000 MBH, Conquest provides even more BTUs in small spaces and fits through a standard 36-inch doorway. With a thermal efficiency of up to 96%, long product life and a 15-year tank and heat exchanger warranty, you can't afford not to have one.

Call R.L. Deppmann or visit our Monday Morning Minutes blog at deppmann.com for information on PVI Water Heaters
800.589.6120



800.784.8326 | pvi.com

TOPGOLF AUBURN HILLS: QuantumFlo Booster, Beeco RPZ, & Beeco Automatic Control Valve



GM Flint Assembly Plant: Hubbell Model EMV120-85-1.5SLA-A-XX Electric Tepid Water Heater



Velocity Boiler, Previously Crown Boiler

CRANE PUMPS & SYSTEMS

CRANE PUMPS & SYSTEMS



BOILERS & COMBINATION UNITS

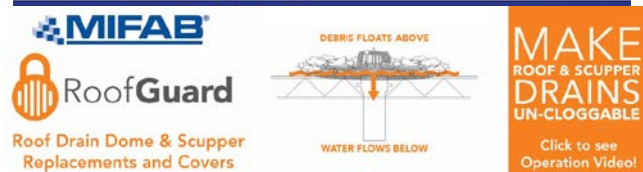
RIELLO

Energy For Life



QUALITY WATER & AIR: (248)589-8010

MIFAB PRODUCT LINE





EDUCATION



PUBLIC VENUES

COMMERCIAL OFFICES

T&S IS HERE >

T&S is proud to be a trusted name across a wide range of markets — staying at the forefront of today’s evolving industry and providing a vast selection of reliable solutions that meet required codes and compliances.

Learn more at tsbrass.com/markets.

Find us in



HEALTHCARE



T&S plumbing products represented in Eastern Michigan by: Diversified Spec Sales - 248-398-2400



New Century Sales, Inc.
Manufacturer's Representatives



COPPERPRESS® SYSTEM BENEFITS

- Size range from 1/2” to 4”
- Green visual application bands
- Consistent wall thickness on all products
- Leak before press systems
- Less equipment required
- Compatibility of fittings and tools

www.copperpress.com

Approvals & Certifications

- NFS ANSI/CAN 61
- UPC
- cUPC
- IPC
- IAPMO PS-117
- ICC-ES-PMG
- ASME B16.51



ISOTUBI USA

Stainless Steel Press Solutions

<https://isotubi-usa.com>

Represented by New Century Sales:

WEST MICHIGAN

Michael Zago
C (616) 293-2121

E mikez@newcenturysales.com

WEST MICHIGAN

Rod Cox
C (616) 706-1481

E rodcd@newcenturysales.com

EAST MICHIGAN

Todd Hiler
C (513) 633-2609

E todhd@newcenturysales.com

EAST MICHIGAN

Ross Beck
C (734) 673-2119

E rossb@newcenturysales.com

www.newcenturysales.com

MegaPress®G
Press safer.
Press
bigger.



Connected in quality.

Quick, safe connections on large diameter gas lines.

Viega MegaPress(R)G requires no open flames or added cost of fire watch, so projects are safer and more profitable. Installers can secure gas pipe up to 4" in 16 seconds or less, saving 60-90% on labor costs. That's why professionals choose MegaPressG - the trusted press connection method approved for gas lines ½" to 4".

Carl Petitt
 Technical Manager
 (614) 852-2691
carl.petitt@viega.us

Michael Norgan
 District Sales Manager
 (989) 415-2431
michael.norgan@viega.us

ALL-IN-ONE SCALD PROTECTION



420-T Series

Now there's no need to install a thermostatic mixing valve below the sink. The new 420-T Series combines Chicago Faucets durability with integrated scald protection. The result is a solid, easy-to-install restroom faucet that complies with ASSE 1070 requirements. With the 420-T, everything you need to meet current building codes and protect users against scalding is built right into the faucet.

Visit chicagofaucets.com or call your local representative for more information.

Taggart-Knight Group
 248/553-4388
info@taggartknight.com





New Century Sales, Inc.
Manufacturer's Representatives

EAST MICHIGAN
1715 Traditional Dr.
Commerce Township, MI 48390
P (248) 960-1147 F (248) 960-1149

WEST MICHIGAN
550 36th St. SE
Grand Rapids, MI 49548
P (616) 600-9660

 AMTROL Expansion Tanks www.amtrol.com	 BASCO Shower Doors www.bascoshowerdoor.com	 Bradley Washroom Solutions www.bradleycorp.com	 CALEFFI Hydronic Solutions Hydronic Accessories www.caleffi.com/usa/en-us	 COPPER PRESS ISOTUBI USA Plumbing Fittings www.copperpress.com www.isotubi-usa.com	
 FAIRMONT designs Bath Furniture www.fairmontdesigns.com	 General Wire Spring Company Sewer Cleaning Machines www.drainbrain.com	 genova PVC Products www.genovaproducts.com	 IBC Better Boilers www.ibcboiler.com	 Just manufacturing EST. 1933 Stainless Steel Sinks www.justmfg.com	
 MATCO NORCA Valves and Fittings www.matco-norca.com	MYERS™ Water and Waste Pumps www.femyers.com	 Oasis Fiberglass & Acrylic Tub & Showers www.oasisbath.com	 OASIS Oasis Water Coolers www.oasiscoolers.com		
 OATEY SCS Supply Chain Services www.oatey.com	 Panasonic USA Bath Fans https://na.panasonic.com/us/home-living-solutions/ventilation-indoor-air-quality/	 PEXGUN AUTOMATIC PEX PIPE THE TOOL Pipe Installation Tools https://pexgun.com/			
 REHAU Unlimited Polymer Solutions PEX Plumbing Products www.rehau.com/us-en	 Rheem RUUD Water Heaters www.rheem.com www.ruud.com	 STRASSER woodenworks Bathroom Vanities & Cabinets www.strasserwood.com	 TURBOTORCH Brazing & Soldering https://www.esabna.com/us/en/products/gas-equipment/brazing-and-soldering/index.cfm		
 StanleyBlack&Decker DEWALT www.dewalt.com IRWIN TOOLS www.irwin.com LENOX www.lenoxtools.com				 LIXIL Link to Good Living American Standard www.americanstandard-us.com DXV www.dxv.com FIAT PRODUCTS www.fiatproducts.com GROHE www.grohe.us/en_us	

www.newcenturysales.com

ASPE Mentoring Program

The Women of ASPE are excited to introduce ASPE's new Mentoring Program!

This program, which is available to all members of the Society, has been designed to connect ASPE members who have a particular skill set (mentor) with individuals (mentee) who are searching to acquire the same skills to develop and make progress toward their personal and professional goals.

Who Is a Mentor?

A mentor is someone who can help the mentee develop skills for success and long-range career planning, is able to be a good listener, is willing to share experiences and views, is willing to commit time and effort, provides an "open door" to questions and problems, points out both strengths and opportunities for improvement, and has a vested interest in the growth and development of their mentee.

Benefits to the mentor:

- Satisfaction in helping someone mature, progress, and achieve goals
- Meeting and sharing experiences with other mentors
- Personal ongoing support to help the mentee succeed
- Personal fulfillment through contribution to the Society and the individual

Who Is a Mentee?

Having a mentor can contribute to a successful and satisfying career. Without a mentor, that learning occurs mostly through trial and error. With a mentor, even experienced professionals can benefit from the experiences and expertise of someone who has withstood the trial and can help the mentee avoid the mistakes. Similarly, those new to the industry will discover that being a mentee shortens the learning curve for acquiring the skills and knowledge most critical to a fruitful career.

Benefits to the mentee:

- Discover new talents about yourself
- Career satisfaction
- Expand your personal network
- Maximize your strengths

For more information click below:

<https://connect.aspe.org/aspe-mentor-match/mentoring>



intellihot™ Intelligent Hot Water Supply Boilers
Endless Water. Zero Waste.

Heating Boilers
Hot Water Supply
Pool/Spa Heaters
Storage Tanks
Complete Parts Stock



High Efficiency Water Heaters
High Efficiency Heating Boilers
Custom System Solutions

Snowmelt Systems
Radiant Floorheat Systems



Gas Fired Heat Pumps
Heat Recovery Chillers



Natural Gas / Propane / Electric
3,000 to 4,000,000 BTU's
- ALSO -
Holby Thermostatic Mixing Valves



Jamie Caporosso: jamie@kerrpump.com
12880 Cloverdale, Oak Park, MI 48237
Ph.: (248) 543-3880 Fax: (248) 543-3236

Liquid Pumps
Vacuum Pumps
Heat Exchangers
Blowers
Related Equipment
and Accessories

Sales • Service • Repair



AURORA FIRE PUMPS

Compact Fire Pump Systems

- UL Listed/FM Approved Aurora Fire Pump
- UL Listed/ FM Approved Fire Pump Controller
- Capacities of 50-750 Gpm.
- Pressures of 40-160 Psi.
- Aurora Model PVM (close coupled to an ODP motor.)

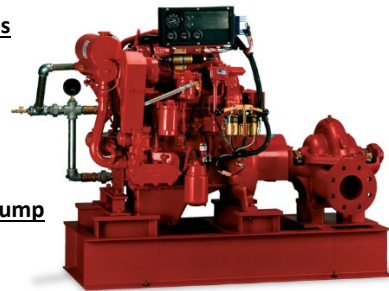
Vertical Split Case Electric Drive Fire Pump

- Electric Driven
- For Commercial, Industrial and Marine use only.
- UL Listed/ FM Approved/NFPA-20 Design

Horizontal Split Case Diesel Drive Fire Pump

- Diesel and Electric driven available.
- Flows at 250 gpm to 5000 gpm.
- Pressures available up to 490 Psi.

PLEASE INQUIRE TO KERR PUMP FOR PRICING,
SELECTIONS, OR TESTING ON EXISTING.
ALSO, PLEASE SEE www.aurorapump.com



Michigan's Oldest Supplier of Pumps and Process Equipment - 1905

Code Study and Development Group of Southeastern Michigan

Item No.	Description	Price Each*	Order Date
3200S18MI	2018 MI Plumbing Code	\$ 89.50	
3300S18MI	2018 MI Mechanical Code (Not Yet Available)	\$ 89.50	PO Number
3200S18	2018 IPC without Commentary	\$ 86.00	(If required)
3210S18	2018 IPC with Commentary	\$ 112.00	
3300S18	2018 IMC without Commentary	\$ 86.00	
3310S18	2018 IMC with Commentary	\$ 112.00	
3600S18	2018 IFGC without Commentary	\$ 86.00	
3610S18	2018 IFGC with Commentary	\$ 112.00	
3000S18	2018 International Building Code	\$ 130.00	
3000S15MI	2015 MI Building Code	\$ 139.00	
3100S15MI	2015 MI Residential Code	\$ 126.00	
3550S15MI	2015 MI Rehab for Existing Bldgs	\$ 90.00	
3800S15MI	2015 MI Energy Code	\$ 48.00	
3600S15	2015 IFGC without Commentary	\$ 84.00	
3310S15	2015 IMC with Commentary	\$ 109.00	
		\$ -	

- **Payment MUST accompany order / verify your preferred delivery method**
- **Credit cards, cash or company check accepted.**
- Dann Holmes - buildingwaterhealth@outlook.com or (248) 921-0582
- If orders are to be mailed, call Dann and you will be advised of additional freight charges.

• **Make check payable to: Code Study & Development Group of SE Michigan**

Mailing Address: **Will be given upon placement of order**

Item No.	Description	Quantity	Unit Price	Item Total	Status
				\$ -	
				\$ -	
				\$ -	
				\$ -	
				\$ -	
				\$ -	
				\$ -	
				\$ -	
Total books subject to incoming ICC Frgt charges		0			

	Client Information		Order Details
Company			Sub-Total \$ -
Address		Add \$5 per book (Outgoing Frgt Charge)	ICC Frgt \$ -
City			USPS Frgt \$ -
State			MI Sales Tax \$ -
Zip-Code			Invoice Total \$ -
Contact Information			
Attention		Received By: _____	
E-Mail			
Phone			

Check No. _____ or Cash _____ Date Paid _____
 Credit Card Approval No. _____

***Supersedes all pricing forms printed before October 19, 2021**

2021 Code Study Order Form

BALFREY & JOHNSTON, INC.

Manufacturers' Representatives
13050 Northend
Oak Park, MI 48237
Ph 313 864-2800 Fax 313 864-7219
George D. Johnston: george@balfrey-johnston.com
balfrey-johnston.com

J.W. SALES, INC.

Manufacturers' Representative
1570 E. Highwood
Pontiac, MI 48340
O: 248.745.8590 F: 248.745.0889
Thomas Huck: thomash@jwsalesinc.net
C: 248-602-1575
Michael Fedorinchik: mikef@jwsalesinc.net
JWsalesinc.net

BURKE AGENCY, INC.

Manufacturers' Representatives
2605 E. Oakley Park Road, Suite A,
Commerce Twp, MI 48390
Ph 248 669-2800 Fax 248 669-3310
Brian Burke, Peter Lapham, John Taylor
bburke@burkeagency.com
burkeagency.com

KERR PUMP AND SUPPLY

Manufacturers' Representatives
12880 Cloverdale
Oak Park, MI 48237
Ph 248 543-3880 Fax 248 543-3236
Tyler Palchak: tpalchak@kerrpump.com
Direct: 248-826-9414
kerrpump.com

DALE PRENTICE COMPANY

Manufacturers' Representatives &
Application Engineering Solutions Provider
26511 Harding Avenue
Oak Park, MI 48237
Ph 800 536-4700 Fax 248 339-5559
Michael Cullen: mcullen@prenticeco.com
Mobile 248 302-5924
prenticeco.com

LOCHINVAR

High Efficiency Water Heaters and Boilers
45900 Port Street
Plymouth, MI 48170
Ph 734 454-4480 Fax 734 454-1790
Jason Loverich: jloverich@lochinvar.com
lochinvar.com

DAVE WATSON ASSOCIATES, INC.

Manufacturers' Representatives
1325 W. Beecher St.
Adrian, MI 49221
Ph 517 263-8988 Fax 517 263-2328
Rick Johnston: rjohnston@davewatson.biz
davewatson.biz

MAJOR/LOZUAWAY & ASSOCIATES, INC.

Manufacturers' Representatives
1117 W. Grand Blanc Rd.
Grand Blanc, MI 48439
Ph 810 234-1635 Fax 810 234-8389
Mike Ostrowski: moski@lozuaway.com
Mobile 810 287-6983
Bill Campbell, PE: bill@lozuaway.com
Mobile 810-287-0029

**DIVERSIFIED SPEC. SALES, INC./
HOWLEY AGENCY SALES CO.**

Manufacturers' Representative
13261 Northend Ave.
Oak Park, MI 48237-3265
Brendan Burdette: bburdette@dsshowley.com
Ph 248 398-2400 Fax 248 547-4905
diversifiedspec.com

NEW CENTURY SALES, INC.

Manufacturers' Representatives
1715 Traditional Dr.
Commerce Township, MI 48390
Ph 248 960-1147
Ross Beck: rossb@newcenturysales.com
Mobile 734 673-2119
Todd Hiler: toddh@newcenturysales.com
Mobile 513 633-2609
newcenturysales.com

HS/BUY VAN ASSOCIATES, INC.

Manufacturers' Representatives
56 S. Squirrel
Auburn Hills, MI 48326
Jarrett Armstrong
Ph 888 472-8982 Fax 248 852-0298
info@hsbuyvan.com
hsbuyvan.com

PAULA. BAKER

ASSE Region #4 Director - Mid West
ASSE International
18927 Hickory Creek Drive, Suite 220
Mokena, IL 60448
Ph 313 399-3072 Fax 248 585-1437
Paul Baker: paul.baker@ualocal98jatc.org
www.asse-plumbing.org

PERFORMANCE ENGINEERING GROUP

Engineered Water Products
32955 Industrial Rd.
Livonia, MI 48150

Alan Deal: adeal@performanceengineering.com
Ph 734 266-5300 Fax 734 266-5310
performanceengineering.com

R.L. DEPPMANN COMPANY

Manufacturers' Representatives
46575 Magellan Drive
Novi, MI 48377

Gerry Potapa Jr., CPD, Paul Prentice, LEED AP®
Mark Fine, LEED AP®, Chris Lieder
Ph 800 589-6120 Fax 248 354-3763
sales@deppmann.com
deppmann.com

PROGRESSIVE PLUMBING SUPPLY

Wholesale Distributor
31239 Mound Road
Warren, MI 48092

Ph 586 756-8662 Fax 586 756-9077
ppsupplyco.com

Locations: Warren, Detroit, Mt. Clemens, and Oxford

TAGGART-KNIGHT GROUP

Manufacturers' Representatives
37686 Enterprise Ct.
Farmington Hills, MI 48331

Gary O. Taggart
Ph 248 553-4388 Fax 248 553-4653
info@taggartco.com
taggartknight.com

QUALITY WATER & AIR, INC.

Manufacturers' Representative
1402 Souter
Troy, MI 48083

Georgann Kummer, WBE
Ph 248 589-8010 Fax 248 589-8016
qualitywaterair@cs.com
qualitywaterair.com

V. E. SALES COMPANY

V. E. Sales is your source for
the finest quality flow control solutions.
25200 Jefferson Ave.
St. Clair Shores, MI 48081

Thomas Van Egmond
Ph 586 774-7760 Fax 586 774-1490
vesalesinc.com

**INCREASE
EXPAND
GROW
MULTIPLY**

Place your ad here and expand your company!



2022-2023 ASPE EMC Board

President

William Grayzar, CPD
28150 Greenfield Rd.
Southfield, MI 48076
(248)569-1430 ext.333
bill@dsonline.com
president.aspe.emc@gmail.com

VP Technical

Pam Hartsell, CPD, PMP
Strategic Energy Solutions
4000 W. Eleven Mile Rd.
Berkley, MI 48072
(248) 399-1900 x 222
Fax: 399-1901
vpt.aspe.emc@gmail.com

VP Legislative

Ryan Lyle
Director of Training PITC
1911 Ring Drive
Troy, MI 48083-4229
248-585-1435 ext. 122
Ryan.Lyle@ualocal98jtc.org

VP Membership

Josh Pedraja
Toledo, OH | Central USA
4610 Entrance Drive, Suite H
Charlotte, NC 28273
616-307-5968
josh.pedraja@pattonsmmedical.com

VP Education

Kristin Simoneaux, P.E., CPD,
LEED AP
2338 Coolidge Hwy. #100
Berkley, MI 48072
(248) 336-4700
kristin.simoneaux@stantec.com

Treasurer

Rachel Gendich
Strategic Energy Solutions
4000 W. Eleven Mile Rd.
Berkley, MI 48072
(248) 399-1900
Fax: 399-1901
treasurer.aspe.emc@gmail.com

Administrative Secretary

George Johnston II
13050 Northend Ave
Oak Park, MI 48237
(313) 864-2800 Fax: 864-7219
george2@balfrey-johnston.com

Corresponding Secretary/ VP Social Media

Josh Pedraja
Toledo, OH | Central USA
4610 Entrance Drive, Suite H
Charlotte, NC 28273
616-307-5968
josh.pedraja@pattonsmmedical.com

Chaper Affiliate/Liaison

Chip Bidigare
23350 15 Mile Rd.
Clinton Township, MI 48035
586-755-3110 x 5938
chip.bidigare@merloenergy.com

AYP Liaison

Rachel Gendich
Strategic Energy Solutions
4000 W. Eleven Mile Rd.
Berkley, MI 48072
(248) 399-1900
Fax: 399-1901

WOA Liaison

Theresa Card, P.E., CPD,
LEED AP BD+C
Strategic Energy Solutions
4000 West 11 Mile Rd
Berkley, MI 48072
(248) 399-1900 ext 223
allethe@gmail.com

Directors

Michael Melaragni, CPD
38958 Lapham Drive | Livonia,
MI 48154-1014
(734) 591-9339
mjmelaragni@yahoo.com

Theresa Card, P.E., CPD,
LEED AP BD+C
Strategic Energy Solutions
4000 West 11 Mile Rd
Berkley, MI 48072
(248) 399-1900 ext 223

Brianne Hall, P.E., CPD,
LEED AP BD+C, GGP
FTC&H
39500 Mac Kenzie Dr. Suite 100
Novi, MI 48377
(248) 324-4780
bhall@fishbeck.com

Dann Holmes
(248) 921-0582
r2al@aspe.org



SPONSOR ADVERTISING OPPORTUNITY INFORMATION

ASPE EMC News is published 9 times per year - September through May.

Yearly advertising for a Business Card ad, which also includes a full Line Card in our sponsors guide:
\$200.00 for members and \$250.00 for non-members.

Graphic Ads - Full Year (9 Issues): Quarter page - \$250.00 ○ Half page - \$350.00 ○ Full page - \$550.00

Checks should be made payable to ASPE EMC and mailed to: Rachel Gendich – Treasurer
c/o Strategic Energy Solution, 4000 W. Eleven Mile Rd., Berkley, MI 48072

Email all digital artwork to: Theresa Green, Newsletter Editor at: theresa.m.green@outlook.com

Circulation 260 - Distributed to: Engineers, Contractors, Inspectors, and other industry professionals in Michigan.

PAY FAST, PAY EASY
Secure Payments Accepted By

