

SEPT - MEETING AGENDA

DATE:

TUESDAY, SEPT. 14, 2021

WHERE:

This will be a HYBRID Meeting

**Plumbing Industry
Training Center in Troy, MI**

5:00 PM - 6:00 PM

**Right Sizing Plumbing Systems -
Overview**

6:00 PM - 6:30 PM

Dinner Break

6:30 PM - 7:30 PM

Plumbing 101

REGISTRATION REQUIRED

To register for the meeting visit the following link: <https://www.eventbrite.com/e/aspe-emc-september-2021-technical-program-tickets-167488752367>

Please note: Effective November 1, 2020: the price is free for members.

SEE INSIDE COVER FOR TABLE OF CONTENTS

From Pam Hartsell, CPD, PMP President of ASPE EMC



Welcome to our new 2021-2022 Program Year, Eastern Michigan!

The theme of the year is Transformational. For most of us, our work lives have been totally transformed over the past year and a half. For some of us, our personal lives look totally different now too. Whatever you've been going through, I hope you know that your ASPE EMC family is still here and still going strong! We've got a great line-up of presentations this year and our mission is to transform your design skills into Super-Powers!

For me personally, things are finally getting back to normal. I'm back in the office full time my approach to work has definitely been transformed. It's sad that it took a global pandemic for me to realize what's really worth feeling stressed about, but it worked! I sleep better, I eat better, I take time for fun and I'm getting lots and lots of exercise! I'm also really looking forward to all the in-person events we have planned. There were times in the past where it took a lot of energy for me just to show up. I've missed my people so much, though, that knowing I'll be seeing you all soon is a huge lift!

The 2021 Technical Symposium in San Diego is only weeks away and many of your fellow chapter members plan to be there! If there is any way you can make it, this is the year to go! 2021 Tech Symposium - ASPE

Another reminder that you can find all the latest info about the plumbing industry in ASPE Pipeline: <https://www.aspe.org/pipeline/>

You can also follow our LinkedIn page to keep up to date on what Your Chapter members are up to: <https://www.linkedin.com/in/aspe-eastern-michigan-chapter-6333251b7/>

I am looking forward to another great year with all my Brothers and Sisters at the EMC!

Your Chapter President,
Pam Hartsell
president.aspe.emc@gmail.com

Contents

President's Report 1
 Program 3
 In The Know 4
 EMC 45th Anniv. History Book 5
 VP Technical Report 6
 VP Legislative Report 7
 AYP Liaison 8
 VP Membership Report 9
 Job Posting 12 - 13
 May Attendees 15
 Photos 16 - 19
 Mentoring Program 21
 Line Card Sponsors 27 - 28

SEPTEMBER BOARD MEETING

Virtual Online Meeting 9/7/2021 @ 4:30 PM

SEPTEMBER PROGRAM

HYBRID Meeting 9/14/2021, 5:00 - 7:30 PM

ASPE NATIONAL 2021 TECH SYMPOSIUM

September 22-26, in San Diego, CA

See info on this page.

ASPE IS ACCEPTING APPLICATIONS FOR THE

ALFRED STEELE SCHOLARSHIP

Contact ASPE National for more information at

(847) 296-0002, or email info@aspe.org

**REGISTRATION
 NOW OPEN!**

for the

**2021
 Tech
 Symposium**

in San Diego, CA
 September 22-26

For more info go to:
[https://www.aspe.org/
 2021-tech-symposium/](https://www.aspe.org/2021-tech-symposium/)

**LATEST NEW MEMBER
 ~ WELCOME ~**

AARON STUROS

SEPTEMBER DESIGN SESSION

5:00-6:00 PM

TOPIC: Right Sizing Plumbing Systems - Overview

The convergence of Net Zero, de-carbonization of buildings, and the electrification of all building HVAC systems are going to force major changes to the way that new buildings are designed and constructed. The tools used to design building systems will need to be re-evaluated and updated to optimize the amount of materials and natural resources to construct facilities. A comparison of design tools both old and new as it relates to plumbing system design will reveal how significant these changes can be.



Alan Deal

Presenter: **Alan Deal, PE** is president of Performance Engineering Group, Inc. Performance Engineering Group has been actively involved in designing and marketing hydronic heating and domestic hot water systems since 1964. Performance Engineering Group has been involved with hundreds of energy conservation projects across a broad spectrum of market segments, including

renewable energy and waste energy solutions. Performance Engineering Group specializes in working with design engineers and contractors to optimize building performance and the return on capital investment in building mechanical systems. Alan has received many industry awards including multiple ASHRAE technology awards for energy conservation activities.

SEPTEMBER TECHNICAL SESSION

6:30-7:30 PM

TOPIC: Plumbing 101

Whether you are new to plumbing design, or just looking to refresh your skills, this introductory course has something for you. Join us for an informative lunchtime presentation on domestic water systems, the codes that regulate them and the standard practices used in designing them.



Bill Grayzar

Presenter: **Bill Grayzar, CPD, V.P. Legislative - ASPE EMC**

Mr. Grayzar is a past president of the Eastern Michigan Chapter of ASPE and currently serves as the chapters V.P. Legislative. He has over 35 years of experience in architecture and engineering. Employed with DiClemente Siegel Design Inc. for over 20 years, Bill continues to enhance his system engineering skills through additional vocational field training. Bill has an excellent working knowledge of Michigan's current building codes and regulations. Bill holds an Associate's Degree of Architectural Technology from Delta College and certifications in Plumbing Design and Green Plumbing Design from ASPE. Bill is active with the National Society of ASPE serving on numerous committees. Bill also serves as the current President of the Code Study and Development Group of Southeast Michigan and is a member of National Fire Protection Association. Bill received the Michigan Chapter of ASSE award as Engineer of the Year in 2013.

About Registration and CEUs:

If you are attending virtually: there is a link to register via the ASPE Education page. Please follow all directions. Using this platform for virtual meetings allows us to streamline the CEU process. So all attendees that plan to join virtually, need to register via the corresponding ASPE Education link. Our meetings will also be listed on the ASPE Education calendar, so you can find registration info there as well. <https://education.aspe.org/>

There is also a passcode that needs to be entered for the virtual meetings now. This passcode is in the email invite as well as listed in the webinar instructions.

If you will attend in person (when we can offer this option): You will need to register using an Eventbrite link that will be in the email. This allows us to know how many people we can expect in person. Thus, allowing us to make sure we maintain the indoor gathering limits imposed by the Governor, and also order enough food for all. For those that attend in person, we will still require sign in/sign out sheets and your CEUs will be submitted to national within 1 week of our event. It may take up to another 2 weeks for the CEUs to show in your ASPE Education log. The PITC does have guest protocols we will have to obey in order to meet there, so please follow all posted signage and procedures.

IN THE KNOW

EMC 45TH ANNIVERSARY HISTORY BOOK NOW AVAILABLE FOR ORDER!

Available in time for the holidays. \$50 Each

Check or Credit Card Accepted

Pick up @ SES or during a Hybrid Chapter Meeting

FREE digital download on the ASPE EMC website.

TABLE TOP SPONSORSHIP PRICING

ASPE Members

- \$200.00 for the 1st table per meeting/per vendor
- \$150.00 for each additional table per meeting/per vendor

Non-Members

- \$250.00 for the 1st table per meeting/per vendor
- \$200.00 for each additional table meeting/per vendor

If a vendor purchases table tops for 3 meetings during the year, a 4th meeting table top will be provided for free.



A TOTAL, STATE-OF-THE-ART HOT WATER SYSTEM, ENGINEERED TO DELIVER A SUPERIOR LEVEL OF USER SAFETY, INFECTION CONTROL AND COMPLIANCE, FROM MECHANICAL ROOM TO THE POINT OF USE.

ARMADA
HOT WATER SYSTEM FOR HEALTHCARE

THE BRAIN®
DIGITAL RECIRCULATION VALVE
Digital hot water temperature control that delivers unparalleled accuracy, stability and safety to mitigate the risk of Legionella and scalding.

RADA DIGITAL FAUCET
Hands-free, programmable, point-of-use fixtures have The Brain® digital technology built in, and offers thermal disinfection, duty flush, bacterial-resistant design and ASSE 1070 compliance.

SAGE® SMART HOT WATER SYSTEM MONITORING AND REPORTING
Advanced software provides regular updates, documentation, custom-filtered reports, and real-time alerts for compliance with Industry guidelines and Standards of Care.

PROGRAMMABLE OPERATION AND FLOW CONTROL

ABH
GAS-FIRED WATER HEATING
Leading-edge gas-fired institutional hot water generation, built for reliability, efficiency and durability.

ABH
SAGE® MONITORING

MERLO ENERGY
Chip.bidigare@merloenergy.com
(586) 256-9822

Armstrong

Bradley Commercial Washrooms. Brought to Life.
HANDWASHING & DRYING | ACCESSORIES | PARTITIONS | LOCKERS

CUTTING-EDGE HANDWASHING TAKES SHAPE

The next generation WashBar raises your restroom to new heights by providing touch-free soap, water and drying in an edgy new design for an unforgettable handwashing experience. The single connection point to the sink provides an impressive design element and creates more open space for cleaning.

ADVANTAGES OF THE WASHBAR

- Floating design for a simple and clean aesthetic
- Single connection point to the sink for easier cleaning
- Eliminates the cost and mess of paper towels
- Icons and LED lights to visually orient users
- Smart sensor technology eliminates false activations
- WashBar and bowl work together to keep water in the basin
- Gallon soap capacity to reduce the number of replacements
- Captures soap and water activations for maintenance planning

The new WashBar WB2 is available with the Verge® LVQ basin in Evero® natural quartz, OmniDeck® 5010 in Terreon® solid surface, or pair with a Terreon solid surface or Evero natural quartz undermount basin with the deck or countertop of your choice.

Available in six beautiful finishes:

- Brushed Black Stainless
- Brushed Bronze
- Brushed Brass
- Brushed Nickel
- Brushed Stainless
- Polished Chrome

ALL-IN-ONE WASHBAR

All the fundamentals of handwashing have been thoughtfully designed into Bradley's innovative WashBar.

WASHBAR FEATURES

- CLEAN**
 - Touch-free activation
 - Low level LED Indicator
 - Gallon (3.8 L) soap capacity
 - Simply replace soap tank – no cleaning or refilling
 - Liquid and foam soap
- RINSE**
 - Touch-free activation
 - 0.5 GPM (1.9 LPM)
 - Ultra-high efficient 0.35 GPM (1.4 LPM) option where water conservation is a necessity
- DRY**
 - Touch-free activation
 - Heated air stream dries hands quickly and efficiently
 - Adjustable speed for quieter hand drying

bradleycorp.com
800 BRADLEY | +262.251.6000
W42 N9101 Fountain Boulevard
Menomonee Falls, WI USA 53051
bradleycorp.com/washbar

Represented by New Century Sales:

WEST MICHIGAN	WEST MICHIGAN	EAST MICHIGAN	EAST MICHIGAN
Michael Zago	Rod Cox	Todd Hiller	Ross Beck
D (248) 960-1147 x.107	D (248) 960-1147 x.116	D (248) 960-1147 x.106	D (248) 960-1147 x.115
C (616) 293-2121	C (616) 706-1481	C (616) 633-2609	C (734) 673-2119
E mikez@newcenturysales.com	E rodc@newcenturysales.com	E toddh@newcenturysales.com	E rossb@newcenturysales.com

www.newcenturysales.com

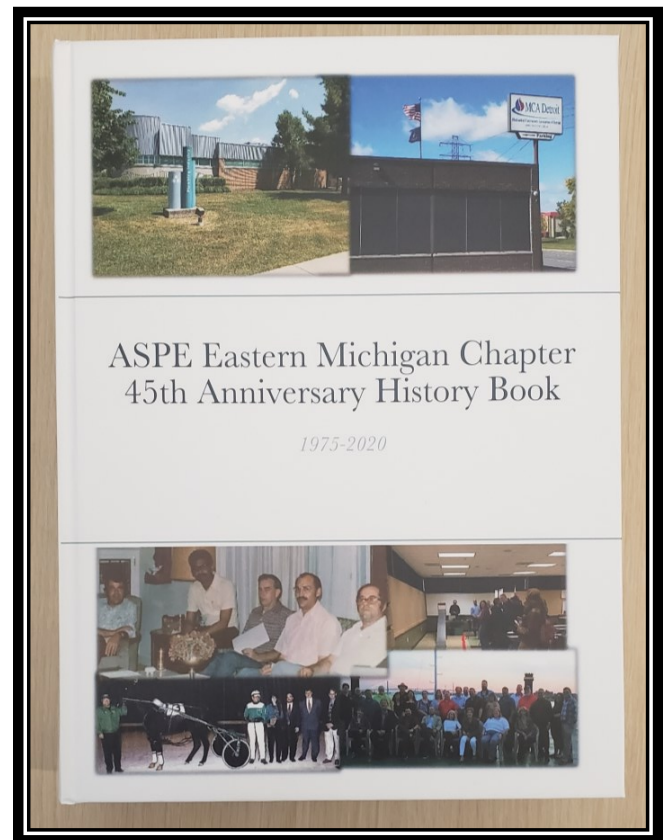
EMC 45TH ANNIVERSARY HISTORY BOOK IS AVAILABLE TO ORDER NOW!

Available in time for the holidays

\$50 EACH

Check or Credit Card
Accepted

Pick-up @ SES or
during a Hybrid
Chapter Meeting



Contact Theresa Card for orders:
vpt.aspe.emc@gmail.com or 248.988.4708



ASPE EASTERN MICHIGAN CHAPTER
WWW.ASPE.ORG/EASTERN-MICHIGAN

VP Technical Report

Theresa Card, P.E., CPD, LEED AP BD+C



Hello from your VP Tech!

I hope everyone enjoyed the programming we had in the 2020-2021 Program Year. I thought it went rather well and we had some amazing speakers and topics.

If you have missed any of the meetings last program year you can find recordings of them below. Please note you will likely have to copy the text below and paste into a

browser to see the videos – as we have found some cannot click the links directly from the newsletter itself.

September 2020 Presentations Recordings: Plumbing Sizing 101 – Pipe Sizing & Hunter’s Curve and The Future of Plumbing Sizing

- Part 1 (because my cpu died in the middle of Dan Cole’s Hunter’s Curve presentation): <https://youtu.be/lthRojeGR9Y>
- Part 2 (Pam was able to start recording soon after my cpu died): <https://youtu.be/YXkz692z2kU>

October 2020 Presentations Recording: Valves 101 and IPC Code Changes 2015/2018/2021

- Full session: https://youtu.be/mX3Q_puSoMc

November 2020 Presentation Recording: Cross Connection for the Plumbing Engineer

- Full session: <https://youtu.be/GYM9cUIxrWg>

December 2020 Presentation Recording: Fire Protection 101 and 102

- Full session: <https://youtu.be/12HsTuCapY8>

January 2021 Presentation Recording: Climate Change: What is it? How will it Impact the Built Environment?

- Full session: https://youtu.be/g5XHD0_YeOg

February 2021 Presentation Recording: Plumbing Systems 101

- Full Session: <https://youtu.be/5tBEICIC8m8>

March 2021 Presentation Recording: Water Filtration and Water Heaters Compared

- Full Session : <https://youtu.be/FEsgUCRB7X4>

April 2021 Presentation Recording: Medical Gas Technology & Med Gas in a Pandemic

- Full Session : <https://youtu.be/eM0jLhyl-Kw>

May 2021 Snow Melt 101 and Building Integration and Commissioning

- Full Session : <https://youtu.be/XSF3H4maML0>

If you would like PDF copies of the slide decks, please let me know.

2021-2022 Program Year

Your Board has been working hard this summer, not only with this crazy work environment we have all been dealing with – but also to get some fantastic programs lined up for the 2021-2022 Program Year starting in September! The Annual Program has been sent to your inboxes from Theresa Green, our amazing Newsletter Editor and Website Manager. We could not survive without her wonderful contributions!

We will be doing hybrid (online and in person offerings) for ALL our meetings this next year. Please only RSVP in person if you really plan on attending. We will offer the same in person perks as years before: dinner courtesy of Lukich catering, Vendor Tabletops where you can get some hands on information about new products and the immeasurable benefit of camaraderie with your fellow plumbing engineers. As always, meeting will be on the 2nd Tuesday of the Month, in the evening so as not to conflict with ASHRAE. **HOWEVER – PLEASE NOTE MAY’S MEETING IS THE LAST TUESDAY- MAY 24TH.** We hope this does not cause too much of an issue with folks – but it was the only date we could get the speaker to attend. Speaking of, the guest speaker for April and May will be Christoph Lohr! Some of you may know Christoph from national events, from being the past AYP liaison to the national ASPE board or from about any conference where people talk about Legionella. He is a Michigan native, so we are glad to bring him back to his home to talk to us about some VERY ground breaking topics.

Check out the 2021-2022 Program for more information!

Stay cool (and sane) out there and we hope to see you soon in September!

Sincerely, Theresa Card,
Vpt.aspe.emc@gmail.com

VP Legislative Report

William Grayzar, CPD



2021 PUBLIC COMMENT HEARING SCHEDULE September 21 - 26, 2021 David L. Lawrence Convention Center Pittsburgh, PA 2021 International Code Committee (ICC) Annual conference and Public Comment Hearings are scheduled from September 21-26, 2021 at the David L. Lawrence center in Pittsburgh, PA. This is concurrent with the ASPE 2021 Technical Symposium scheduled from September 22-26, 2021 in San Diego, CA. The ICC Hearing schedule can be downloaded at the following link: <https://www.iccsafe.org/wp-content/uploads/2021-PCH-Schedule.pdf>. Both events are currently scheduled to be in-person events. I will continue to follow up with the results of the code hearings and news from the ASPE Symposium at the completion of both events. In the meantime, here are the answers to the questions from the short quiz provided in the May 2021 newsletter.

1. ~~True~~ or **False** A 4" x 3" water closet connection for sanitary drainage is considered a reduction in size. **A 4" x 3" water closet connection is not considered a reduction in size (Refer to section 704.2 of the 2015 IPC).**
2. **True** or ~~False~~ The 100 year, 1 hour rainfall rate for Lansing, MI is the same as Tucson, AZ. **Using the charts in Section 1106.1 of the 2015 IPC we find that both Lansing MI and Tucson, AZ fall in areas with a 3" per hour rainfall rate for a 100 year, 1 hour rainfall event.**
3. **True** or ~~False~~ Non-potable rainwater collection from vehicular parking or pedestrian surfaces can be used for landscape irrigation. **This is true only for landscape irrigation (Refer to Appendix A section A1302.2 of the 2015 IPC).**
4. ~~True~~ or **False** Hot water is defined as water at a temperature greater than or equal to 105°F (41°C). **Code defines Hot water as water at a temperature greater than or equal to 110°F (43°C) (Refer to section 202 "Definitions" of the 2015 IPC).**
5. ~~True~~ or **False** Condensate drain shall be a minimum of 1½" in size for equipment with a refrigeration capacity greater than 40 tons and up to 90 tons. **Only a 1 ¼" drain is required per Table 314.2.2 of the 2015 IPC.**
6. **True** or ~~False~~ Drinking fountains are not required in buildings with an occupant load less than 15 people. **(Refer to section 410.2 "Small Occupancies" of the 2015 IPC).**
7. **True** or ~~False~~ Cleanouts located on stacks can be one size smaller than the stack size. **This is true according to Exception number 2 in Section 708.1.5 "Cleanout Size" of the 2015 IPC.**
8. ~~True~~ or **False** Floor drains shall have a drain outlet of not less than 1½" inches in diameter. **According to Section 412.3 "Size of Floor Drains" floor drains shall have an outlet of not less than 2" inches. In addition, Table 709.1 of the 2015 IPC a floor drain must have a minimum size of 2". Table 709.2 does not apply since floor drains are listed in Table 709.1.**
9. **True** or ~~False~~ A full open valve is required on the supply pipe to a gravity or pressurized water tank. **Refer to Item 7 under Section 606.1 "Location of full-open valves" in the 2015 IPC.**
10. **True** or ~~False~~ The 97.5% winter design temperature of 1°F for Lansing, MI is the same as Juneau, AK. **Using Table D101, located in Appendix D of the 2015 IPC, we find that both Juneau, AK and Lansing, MI have a 97.5 % winter design temperature of 1°F.**

Hope you enjoyed the quiz. I look forward to seeing everyone on September 14th, 2021 at the Plumbing Industry Training Center.

Regards,

Bill

AYP Liaison Report

George Bellman



Happy September ASPE members! Geeze, for as long as this year has felt, this summer has particularly seemed to have flown right by. Personally, I've felt a bit of anxiety with all my friends moving back and forth across the country for work because of the pandemic. But I've given thanks to whatever force that has let us keep in

touch with one another and to keep our friendship strong. We message and talk to each other several times a week and even planned a week long cave tour through the Smokey Mountains this past summer – which was extremely cool. It makes me genuinely optimistic for the future within my friend group and in my life in a broader sense.

Looking forward to things here in Michigan, I feel this year will be good for us and our organization both professionally and mentally. I'm excited for upcoming hybrid and in-person meetings taking place – to strengthen our commitments to one another and to participate in these shared experiences.

With the enforcement of the 2018 Michigan Plumbing Code looming (9/15/21 per LARA)(1), I am looking to host a “Code Trivia” night in late September/ early October. I think this will be a great ice-breaker event to start the year and to test ourselves for this next cyclical design phase we find ourselves entering. Everyone will be welcome at this event. And who knows, maybe the AYP's can keep up with our more historically inclined members. :D

Have a great month and continue to stay safe!

George Bellman

AYP Liaison

Citation:

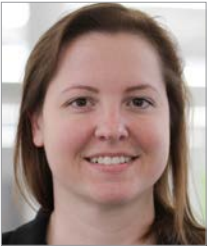
1. “LARA - Currently Open Rules - 2018 Michigan Plumbing Code; Administrative Rules Part 7.” Michigan. Gov, Department of Licensing and Regulatory Affairs, 2021, www.michigan.gov/lara/0,4601,7-154-89334_10575_17550_17583_85703---,00.html

See more photos on pages 18-19



VP Membership Report

Kristin Simoneaux, P.E., CPD, LEED



Welcome back everyone!

I hope you are all staying healthy and cool. Between work, pandemic, and family, I was not able to do much vacationing this year, but I was able to start a small vegetable garden. Figured it was a great opportunity to teach the kids about plant life cycles. We have a

very small garden of odd vegetables (purple peppers, yellow lemon boy tomatoes, curly green beans, and okra). So far I am learning more than they are as I delve into the world of canning tomatoes and flash freezing okra. With all the rain we have received, I have been able to use our tiny rainwater storage system to keep our garden going and my water bill low. If you have any watering/gardening tricks for me, please pass them along!

We have some exciting new things happening this year in terms of membership. Our chapter is offering again a free 1-year student membership to eligible students. In exchange for the free membership, we request the student give feedback on their experience (through either a short interview or writing their own newsletter article) within the first few months of their new membership. We had a great turn out last year of students that were interested. LTU was in the lead with the most student members from that university join. If you know of a student that has been contemplating membership, please send them my way!

One of the many benefits to becoming an ASPE member is the mentoring program.

If you are interested in becoming a mentor or wish you had someone to help guide you through your plumbing career, please check out our Mentoring Program (<https://connect.aspe.org/aspe-mentor-match/mentoring>). Our ASPE Connect Mentor Match program helps you find, connect, and share experiences with others as either a mentor or mentee. Since it is the start of the ASPE meeting season, now is a great time to find a mentor/mentee. Our local chapter meetings can help you stay in touch while learning about new topics.

For those you of who are already ASPE members, these tools will help you network and learn more about the profession and the Society and are available to you once you log in to the ASPE website:

- » The Value of ASPE
Making the Most of Your Membership
- » Plumbing Engineering Design Handbook, Volumes 1-4
- » ASPE Connect
- » Plumbing Systems & Design Index and Archives
- » Nominating Committee Handbook: A Guide to the Board of Directors Nomination Process
- » PED Handbook of Tables App

If you have any questions or need help joining/renewing your membership, please feel free to reach out to me directly. Until we meet again, stay healthy!

Kristin Simoneaux, P.E., CPD, LEED AP
Associate / Senior Mechanical Engineer
Direct: (248)336-4760
ksimoneaux@stantec.com



Who knew okra was such a pretty plant! I may just plant some in the front yard next year. ☺



Small collection of the oddities harvested. I forgot to check on the okra for 2 days and got the mutants on the right. Oops.

Good Rules

Kristin Simoneaux, P.E., CPD, LEED



Hi All,

As everyone knows there's nothing like a nice, hot shower after a long day or to help wake you up in the morning. That joy can become a nightmare quickly however if the water becomes too hot. To share a recent experience of mine (hang in there as it takes a minute to explain), due to the crazy storms I had no power at my house. Thankfully, my parents who live a few houses away did have power and were willing to take in my family until our power returned. With only one bathroom in the house (crazy right?) we had the fun of my autistic child locking himself in the bathroom and refusing to come out. The doorknob was one that required a thin punch rod to unlock which we couldn't find, and a hanger wasn't working. My son holed up with the only toilet was not going to fly for long in a house full of 5 other people. Luckily, the doorknob was installed though with the screws on the hall side so after taking apart the doorknob my son was freed. One quick trip to Home Depot and the doorknob was replaced with a locking knob that only requires a coin, flat head screwdriver or a fingernail to open. Yay!

After 3 days of no power and everyone getting on each other's nerves, my husband took my kids out of the house and left me to work while my parents were taking their morning showers. After a minute I could hear my over 70-year-old father screaming. He had locked the door but thankfully I only lost a second opening it with my nails. I ran in and he was huddled against the back wall of the shower yelling and trying to stay out of the water stream. I immediately turned off the shower which was turned all the way to hot as copious amounts of steam were pouring into the room. I ran downstairs to check the water heater and found it was set to "VERY HOT". Per the manufacturer manual that meant approximately 160 degrees! I reset the water heater to a much more reasonable temperature and asked my 80-year-old mother why it was set so high. Her response was nobody had touched it, but they had the water heater serviced a little while ago so maybe it happened then. She mentioned the water has been much hotter than usual. Very thankfully nobody was injured.

What I have learned:

- Always check the temperature settings on older friends/family members equipment especially after they have had service done (a 5 second check can make a huge difference).
- When a family member is yelling in pain, Usain Bolt has nothing on my 10 yard dash speed.
- Sometime power outages are a blessing. If I had power my son wouldn't have gotten locked inside the bathroom requiring the knob to be replaced and I wouldn't have been there to help my dad.

We all have seen the charts but as a reminder, most adults will suffer third degree burns if exposed to the following temperatures for the times indicated:

- 120 degrees – 5 minutes
- 130 degrees – 30 seconds
- 140 degrees – 5 seconds
- 150 degrees – <2 seconds
- Children and elderly tend to be more susceptible to burns as response times to pain and reflexes decrease.
- Per the US Department of Health and Human Services (<https://chemm.nlm.nih.gov/burns.htm>), mortality rate due to total amount of body burned increases with age. Elderly may die from burns as small as <15% total body surface area.

Good rules for water temperature safety:

- Residential systems should be set to 120 degrees F maximum at the fixtures to prevent scald risk.
- Always let the water run for a minute and check water temperature with your hand/wrist prior to entering a shower.

Stay safe!

Kristin Simoneaux, P.E., CPD, LEED AP
Associate / Senior Mechanical Engineer
Direct: (248)336-4760
ksimoneaux@stantec.com

ASPE Pipeline
News for the Plumbing System Design Industry

<https://www.aspe.org/pipeline/>



[calQlate Your Potential Energy Savings]

Booster system sizing can be difficult. That's why there's calQflo.

QuantumFlo's advanced innovation makes us the premier industrial manufacturing and distribution leader of intelligent pump system technology.

We offer the industry's revolutionary online booster system sizing software, calQflo, that selects the most efficient booster option for your needs—so that your system keeps pumping long into the future! With calQflo, you can:

- Compute the most **size-appropriate** system for your projects.
- **Save money** by selecting **energy-efficient** specs.
- Gain all of this information for **free!**



Get 20-50% Potential Energy Savings from Standard Sizing



Quality Water & Air, Inc.

Quality Water & Air, Inc.
 1402 Souter
 Troy, MI 48083
 Phone: 248-589-8010
 Email: qualitywaterair@cs.com
 Website: www.qualitywaterair.com
 Contact: Georgann - Chuck - Paul



Every Panel Meets UL508A with a 100KAIC (SCCR) Withstand Rating



R. L. Deppmann Company

Job Title: Sales Engineer

Reports To: Engineering Sales Manager

About Deppmann

Our Company focuses on helping people make better decisions. We are a company that is responsive to our customer and understands how our product work and interact in hydronic and plumbing systems. Our company culture is shaped by our Core Values: Knowledge, Empowerment, and Responsiveness. We achieve this through selling hydronic and plumbing equipment in Michigan and Ohio. Our Company is 100% employee owned.

Scope: Sales members utilize their technical knowledge of hydronic, steam and plumbing systems and sales experiences to help provide sales & support for the products represented by R.L. Deppmann. The Engineering Outside Salesperson focuses on the projects during the development and design phases, being a resource to our engineers in developing system designs and equipment selections.

Who We Are Looking For:

Looking for someone that enjoys collaborating with engineers and fellow team members to provide the best solution for any given project. The successful candidate enjoys teaching as well as learning. She/He will seek out opportunities to collaborate and loves to solve problems using her/his technical skills.

Responsibilities Include:

- **Selling – Pursuing the Order:**
 - Close the order at the engineer level (specifications and schedules)
 - Negotiate pricing
 - Coordinate quote
 - Manage vendors
 - Engineer/systems design
 - Internal collaboration/coordination
 - Follow-up on leads from Customer Service & Inside Sales
 - Respond to pricing requests
 - Joint sales with customers
 - Exceed sales goals for sales territory

- **Customer Management:**
 - Problem solving
 - Conduct training
 - Meet with customers: relationship building
 - On site tech support
 - Visit jobsites

March 2021



- **Internal Administrative Activities:**
 - Acquire product/industry/technical knowledge
 - Develop and analyze sales plan
 - Weekly teleconference call
 - Attend department offsite meeting
 - Utilize CRM to provide regular updates on projects & customers
 - Personal development
 - Backup Estimation

- **Marketing:**
 - Attend social events: golf outings, trade shows
 - Participate in professional organizations: i.e. ASHRAE, ASPE

- **Miscellaneous**
 - Commitment to Ongoing Personal Training / Development
 - Other duties may be assigned

Requirements:

Strong Computer Skills in Microsoft Office Suite, Technical background in HVAC (Degree Preferred), Ability to Multi-Task, Strong Desire to Learn, Take on responsibility, Great People Skills, Detail Oriented.

Travel:

Local travel required within Mid-Michigan & Traverse City, MI area territory, 10% travel outside of sales territory. A valid driver's license is required.

If you have these skills and the desire to join a driven team, send resume to Human Resources at jobs@deppmann.com

March 2021

MegaPress® G
 Press safer.
**Press
 bigger.**



Connected in quality.

Quick, safe connections on large diameter gas lines.

Viega MegaPress(R)G requires no open flames or added cost of fire watch, so projects are safer and more profitable. Installers can secure gas pipe up to 4" in 16 seconds or less, saving 60-90% on labor costs. That's why professionals choose MegaPressG - the trusted press connection method approved for gas lines 1/2" to 4".

Carl Petitt
 Technical Manager
 (614) 852-2691
 carl.petitt@viega.us

Michael Norgan
 District Sales Manager
 (989) 415-2431
 michael.norgan@viega.us

ALL-IN-ONE SCALD PROTECTION



420-T Series

Now there's no need to install a thermostatic mixing valve below the sink. The new 420-T Series combines Chicago Faucets durability with integrated scald protection. The result is a solid, easy-to-install restroom faucet that complies with ASSE 1070 requirements. With the 420-T, everything you need to meet current building codes and protect users against scalding is built right into the faucet.

Visit chicagofaucets.com or call your local representative for more information.

Taggart-Knight Group
 248/553-4388
 info@taggartknight.com



MAY MEETING STATS

THANK YOU TO OUR ATTENDEES!

David Bailey
George Bellman
Chip Bidigare
Theresa Card
Alan Deal
Jose DeHoyos
Rachel Gendich
Ronald George
William Grayzar
Brienne Hall
Pamela Hartsell

Dann Holmes
Thomas Huck
Mary Jordan
Tavis Kerr
Hank Koppelo
John Kusluski
Rich McNally
Michael Melaragni
Kristian Merritt
John Nametz
Adrian Olajec

Joshua Pedraja
Brenda Pesmark
Gerald Potapa
Kari Rosteck
KristinSimoneaux
Kyle Tevault
Bill Werthman
Quinn Williamson
Brett Young
Cynthia Zatto

Women
of ASPE

Engaging, retaining and advancing
women in the industry.

Become Involved
Click here or go to:

<https://www.aspe.org/membership-global-community/membership/special-interest-groups/women-of-aspe/>

<https://connect.aspe.org/aspe-mentor-match/mentoring>



MAY MEETING AND SUMMER PHOTOS



May Chapter Meeting - Kari Rosteck presents on Commissioning.



May Chapter Meeting - A view from the podium!

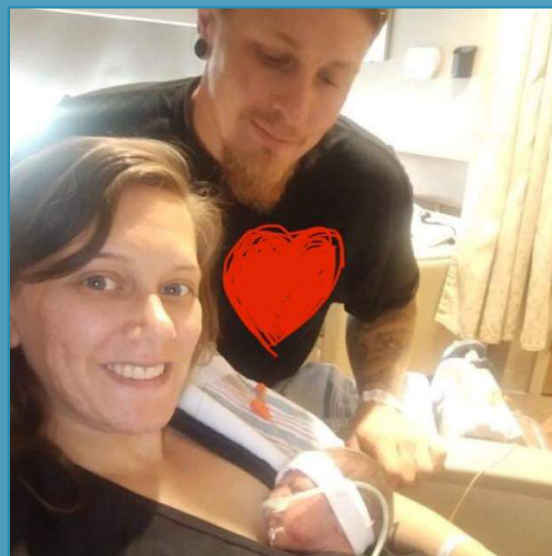
MAY MEETING AND SUMMER PHOTOS



May Chapter Meeting - EMC President Pam Hartsell presents Certificates of Appreciation to presenters Rich McNally and Kari Rosteck.



Pam Hartsell is a 3rd Time Grandma!

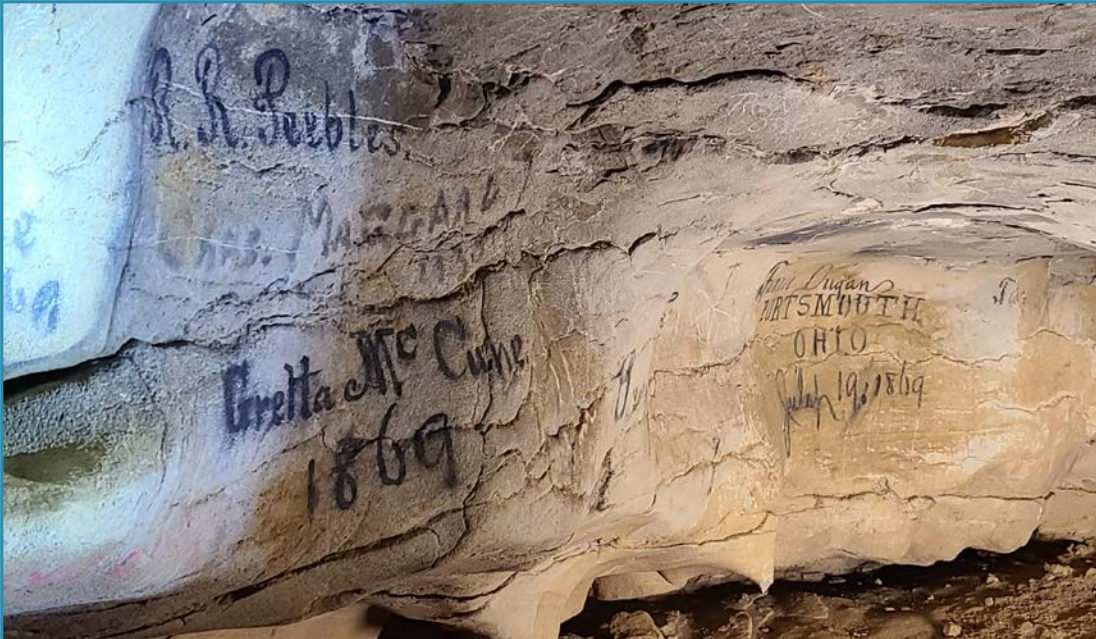


Pam's daughter Jessica had a premie baby and he's doing great!

SUMMER PHOTOS



George Bellman's weeklong cave tour through the Smokey Mountains! This photo is of the "Ballroom" as the tour guide liked to call it, with a bunch of stalactites over a large pond.

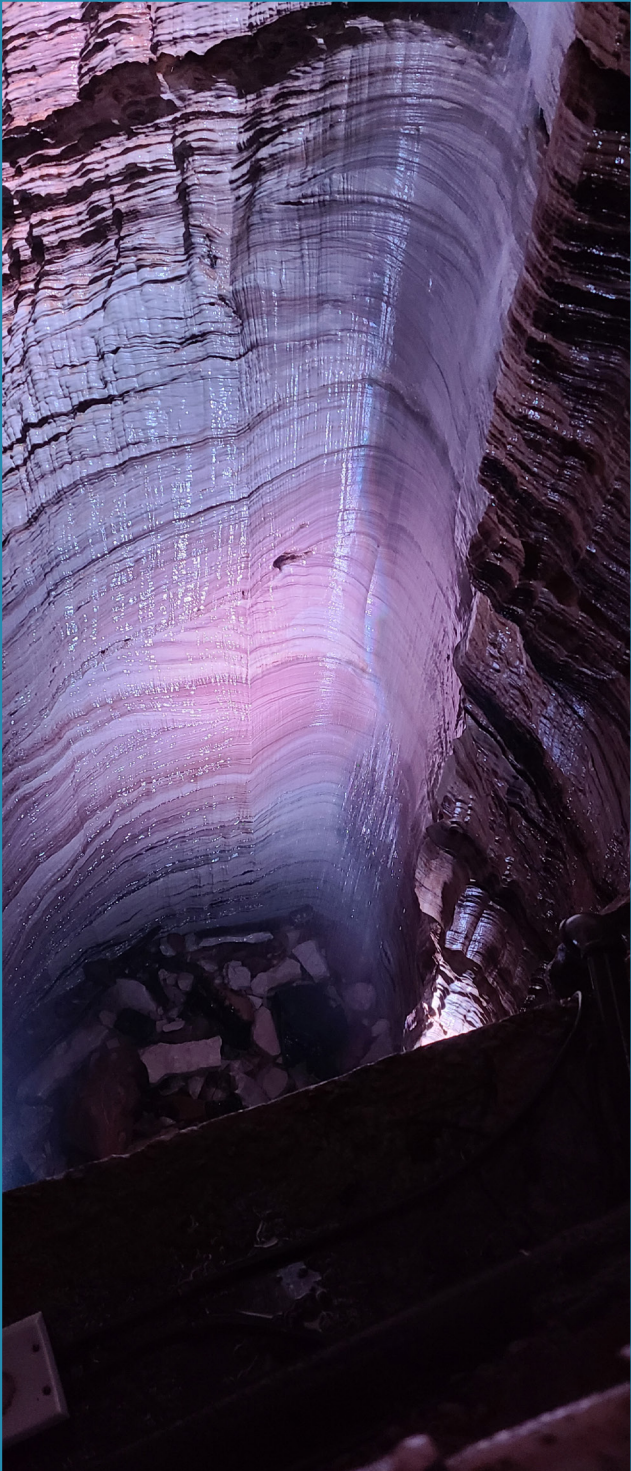


Signatures from over a hundred years ago!

SUMMER PHOTOS



ASPE EMC's AYP Liaison,
George Bellman



30 foot waterfalls!

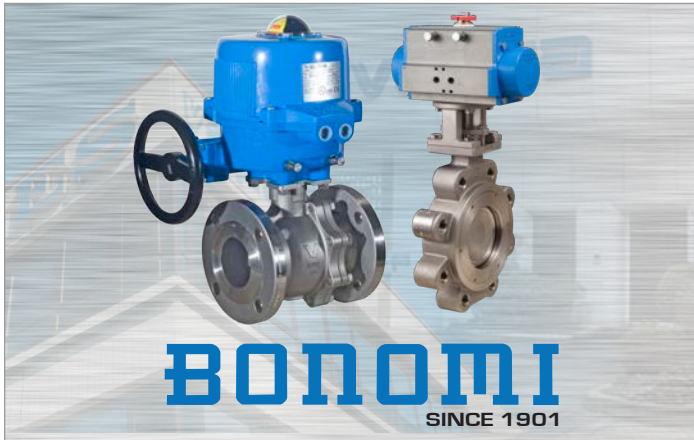


Flow Control Solutions

Cindy Zatto

V.E. SALES COMPANY, INC.

For additional information on Aquatherm, Highland Tank, MIRO and Bonomi products, please call Cindy Zatto with V. E. Sales, Inc. at 810.343.2713 or email cindyzt@vesalesinc.com



BONOMI
SINCE 1901

Put more than a century of excellence in valve design and production to work for your company

More than 100 years ago, the Bonomi family began designing and manufacturing valves in Italy with the same passion for excellence as the winemakers that were our first customers.

Today, our low-torque ball valves, in sizes 1/4" to 56", and precision electric and pneumatic actuators are still made in Italy in our own advanced production facilities. And though our single-part number valve and actuator packages make valve automation more simple than ever, our engineering support is available world wide.

Call Bonomi. We'll put our history of flow-control excellence to work for your future.



www.bonominorthamerica.com • (704) 412-9031

Stop Battling Volatile Prices and Corrosion

Pricing for steel mechanical piping systems is rising significantly. Lightweight, stably priced Aquatherm polypropylene-random (PP-R) piping is connected by quick, reliable heat fusion. Plus, PP-R doesn't rust, scale, or corrode and it has a 60-year projected lifespan and many other benefits.

aquatherm
we've got a pipe for that

Learn more at aquatherm.com

PROBLEM:

RPZ inside a building
= flood damage
= design engineer liability

SOLUTION:

Install the RPZ inside a freeze protected enclosure located outside the building.

Want to learn more?

Visit the engineering blog pages at www.safe-t-cover.com/blog

SAFE-T-COVER
BY HYDROCOWL

safe-t-cover.com 800-245-6333

PROUDLY MADE IN THE USA
WWW.MIROIND.COM

THE SIMPLE, SMART SOLUTION TO ROOFTOP SUPPORTS

- ✓ Industry-leading 20 year warranty
- ✓ Designed to protect roof membrane by keeping PSI below 2.0
- ✓ Supports come pre-assembled and ready to install
- ✓ Supports available for duct, pipe, mechanical units, and more, as well as stair crossovers, ramps, and service platforms
- ✓ Professional assistance through the process, from take-off to final installation

MIRO
INDUSTRIES, INC.
ROOFTOP SUPPORT PRODUCTS

HOW CAN WE SUPPORT YOU?



New Century Sales, Inc.
Manufacturer's Representatives

EAST MICHIGAN
1715 Traditional Dr.
Commerce Township, MI 48390
P [248] 960-1147 F [248] 960-1149

WEST MICHIGAN
550 36th St. SE
Grand Rapids, MI 49548
P [616] 600-9660

 www.americanstandard-us.com (Kitchen & Bathroom)	 www.amtrol.com (Expansion Tanks)	 www.bascoshowerdoor.com (Shower Doors)	 www.bradleycorp.com (Washroom Solutions)
 www.caleffi.com/usa/en-us (Hydronic Accessories)	 www.copperpress.com www.isotubi-usa.com (Plumbing Fittings)	 www.fiatproducts.com (Shower Floors)	 www.grohe.com/us (Faucets)
 www.justmfg.com (Stainless Steel Sinks)	 www.femyers.com (Water and Waste Pumps)	 www.oasisbath.com (Fiberglass & Acrylic Tub & Showers)	 www.oasiscoolers.com (Water Filtration Coolers)
 www.oatey.com (Cherne, Dbn Brass, Harvey & Hercules)	 https://na.panasonic.com/us/home-living-solutions/ventilation-indoor-air-quality/ (Bath Fans)	 www.rehau.com/us-en (PEX Plumbing Products)	 www.rheem.com (Water Heaters)



Represented by New Century Sales:

WEST MICHIGAN Michael Zago C [616] 293-2121 E mikez@newcenturysales.com	WEST MICHIGAN Rod Cox C [616] 706-1481 E rodcd@newcenturysales.com	EAST MICHIGAN Todd Hiler C [513] 633-2609 E toddh@newcenturysales.com	EAST MICHIGAN Ross Beck C [734] 673-2119 E rossb@newcenturysales.com
---	--	---	--

www.newcenturysales.com

ASPE Mentoring Program

The Women of ASPE are excited to introduce ASPE's new Mentoring Program!

This program, which is available to all members of the Society, has been designed to connect ASPE members who have a particular skill set (mentor) with individuals (mentee) who are searching to acquire the same skills to develop and make progress toward their personal and professional goals.

Who Is a Mentor?

A mentor is someone who can help the mentee develop skills for success and long-range career planning, is able to be a good listener, is willing to share experiences and views, is willing to commit time and effort, provides an "open door" to questions and problems, points out both strengths and opportunities for improvement, and has a vested interest in the growth and development of their mentee.

Benefits to the mentor:

- Satisfaction in helping someone mature, progress, and achieve goals
- Meeting and sharing experiences with other mentors
- Personal ongoing support to help the mentee succeed
- Personal fulfillment through contribution to the Society and the individual

Who Is a Mentee?

Having a mentor can contribute to a successful and satisfying career. Without a mentor, that learning occurs mostly through trial and error. With a mentor, even experienced professionals can benefit from the experiences and expertise of someone who has withstood the trial and can help the mentee avoid the mistakes. Similarly, those new to the industry will discover that being a mentee shortens the learning curve for acquiring the skills and knowledge most critical to a fruitful career.

Benefits to the mentee:

- Discover new talents about yourself
- Career satisfaction
- Expand your personal network
- Maximize your strengths

aspe.org/aspe-mentoring-program





PLUMBING
TECHNICAL SERVICES

VALUE ENGINEERING: QUALITY NEVER GOES OUT OF STYLE

**Learn more about the benefits of
using a cast iron plumbing system.**

Don't Value-Engineer the Quality Out of Your System

Don't value-engineer the performance out of your next DWV plumbing project. Consider the true cost of installation when comparing piping solutions.

Reach out to your local Tech Services rep to schedule a time to go over the ASPE approved CEU Value-Engineering Considerations presentation.



McWanePlumbingTechServices.com/contact



EDUCATION



PUBLIC VENUES

HEALTHCARE

COMMERCIAL OFFICES

T&S IS HERE >

T&S is proud to be a trusted name across a wide range of markets — staying at the forefront of today's evolving industry and providing a vast selection of reliable solutions that meet required codes and compliances.

Learn more at tsbrass.com/markets.

Find us in



T&S plumbing products represented in Eastern Michigan by: Diversified Spec Sales - 248-398-2400

KIMAX® Glass Drain and Vent Systems



- Low volatile organic compounds (VOCs)
- Will not burn or emit toxic fumes
- Maximum corrosion resistance
- Flexibility, adaptability, modularity
- Safe and simple installation
- Lowest life-cycle costs

Tro Sales Company
3406 West 12 Mile Road
Berkley, MI 48072
(248) 546-5354

SCHOTT North America, Inc
info.drainline@us.schott.com
www.us.schott.com/drainline



Replacing Your Water Heater Every Few Years is Not Our Business Plan



Conquest[®] condensing, gas-fired water heaters are constructed from AquaPLEX[®] duplex stainless steel so they're corrosion-resistant in potable water at any temperature. Available in 199-1000 MBH, Conquest provides even more BTUs in small spaces and fits through a standard 36-inch doorway. With a thermal efficiency of up to 96%, long product life and a 15-year tank and heat exchanger warranty, you can't afford not to have one.

Call R.L. Deppmann or visit our Monday Morning Minutes blog at deppmann.com for information on PVI Water Heaters

800.589.6120



800.784.8326 | pvi.com



INTRODUCING THE FREEZELESS **UNDERCOVER** WALL HYDRANT™



- Model 68 freezeless wall hydrant protected by an integral cover
- Drains automatically—even with hose attached
- Replaceable 16 gauge stainless steel cover flips down for easy access
- Tee key prevents unauthorized use
- Sleek, streamlined, low profile design



WOODFORD MANUFACTURING COMPANY

Excellence. *Always.*

800.621.6032 • www.woodfordmfg.com

Represented by Burke Agency, Inc. • 248.669.2800

Woodford Model 68



32995 Industrial Road, Livonia, MI 48150
 Phone 734.266.5300 Fax 734.266.5310
 www.performanceengineering.com

intellihot™ Intelligent Hot Water Supply Boilers
 Endless Water. Zero Waste.

Heating Boilers
 Hot Water Supply
 Pool/Spa Heaters
 Storage Tanks
 Complete Parts Stock



High Efficiency Water Heaters
 High Efficiency Heating
 Boilers
 Custom System Solutions

Snowmelt Systems
 Radiant Floorheat Systems



Gas Fired Heat Pumps
 Heat Recovery Chillers



Natural Gas / Propane / Electric
3,000 to 4,000,000 BTU's
 - ALSO -
 Holby Thermostatic Mixing Valves



Jamie Caporosso: jamie@kerrpump.com
 12880 Cloverdale, Oak Park, MI 48237
 Ph.: (248) 543-3880 Fax: (248) 543-3236

Liquid Pumps
 Vacuum Pumps
 Heat Exchangers
 Blowers
 Related Equipment
 and Accessories

Sales • Service • Repair



AURORA FIRE PUMPS

Compact Fire Pump Systems

- UL Listed/FM Approved Aurora Fire Pump
- UL Listed/ FM Approved Fire Pump Controller
- Capacities of 50-750 Gpm.
- Pressures of 40-160 Psi.
- Aurora Model PVM (close coupled to an ODP motor.)

Vertical Split Case Electric Drive Fire Pump

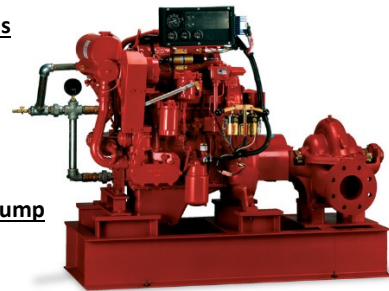
- Electric Driven
- For Commercial, Industrial and Marine use only.
- UL Listed/ FM Approved/NFPA-20 Design

Horizontal Split Case Diesel Drive Fire Pump

- Diesel and Electric driven available.
- Flows at 250 gpm to 5000 gpm.
- Pressures available up to 490 Psi.

PLEASE INQUIRE TO KERR PUMP FOR PRICING,
 SELECTIONS, OR TESTING ON EXISTING.

ALSO, PLEASE SEE www.aurorapump.com



Michigan's Oldest Supplier of Pumps and Process Equipment - 1905

BALFREY & JOHNSTON, INC.

Manufacturers' Representatives
 13050 Northend
 Oak Park, MI 48237
 Ph 313 864-2800 Fax 313 864-7219
George D. Johnston: george@balfrey-johnston.com
 balfrey-johnston.com

KERR PUMP AND SUPPLY

Manufacturers' Representatives
 12880 Cloverdale
 Oak Park, MI 48237
 Ph 248 543-3880 Fax 248 543-3236
Jamie Caporosso: jamie@kerrpump.com
 kerrpump.com

BURKE AGENCY, INC.

Manufacturers' Representatives
 2605 E. Oakley Park Road, Suite A,
 Commerce Twp, MI 48390
 Ph 248 669-2800 Fax 248 669-3310
Brian Burke, Peter Lapham, John Taylor
 bburke@burkeagency.com
 burkeagency.com

LOCHINVAR

High Efficiency Water Heaters and Boilers
 45900 Port Street
 Plymouth, MI 48170
 Ph 734 454-4480 Fax 734 454-1790
Jason Loverich: jloverich@lochinvar.com
 lochinvar.com

DALE PRENTICE COMPANY

Manufacturers' Representatives &
 Application Engineering Solutions Provider
 26511 Harding Avenue
 Oak Park, MI 48237
 Ph 800 536-4700 Fax 248 339-5559
Michael Cullen: mcullen@prenticeco.com
 Mobile 248 302-5924
 prenticeco.com

MAJOR/LOZUAWAY & ASSOCIATES, INC.

Manufacturers' Representatives
 1117 W. Grand Blanc Rd.
 Grand Blanc, MI 48439
 Ph 810 234-1635 Fax 810 234-8389
Mike Ostrowski: moski@lozuaway.com
 Mobile 810 287-6983
Bill Campbell, PE: bill@lozuaway.com
 Mobile 810-287-0029

DAVE WATSON ASSOCIATES, INC.

Manufacturers' Representatives
 1325 W. Beecher St.
 Adrian, MI 49221
 Ph 517 263-8988 Fax 517 263-2328
Rick Johnston: rjohnston@davewatson.biz
 davewatson.biz

NEW CENTURY SALES, INC.

Manufacturers' Representatives
 1715 Traditional Dr.
 Commerce Township, MI 48390
 Ph 248 960-1147
Ross Beck: rossb@newcenturysales.com
 Mobile (734) 673-2119
Todd Hiler: toddh@newcenturysales.com
 Mobile 513 633-2609
 newcenturysales.com

**DIVERSIFIED SPEC. SALES, INC./
HOWLEY AGENCY SALES CO.**

Manufacturers' Representative
 13261 Northend Ave.
 Oak Park, MI 48237-3265
Brendan Burdette: bburdette@dsshowley.com
 Ph 248 398-2400 Fax 248 547-4905
 diversifiedspec.com

PAUL A. BAKER

ASSE Region #4 Director - Mid West
 ASSE International
 18927 Hickory Creek Drive, Suite 220
 Mokena, IL 60448
 Ph 313 399-3072 Fax 248 585-1437
Paul Baker: paul.baker@ualocal98jatc.org
 www.asse-plumbing.org

HS/BUY VAN ASSOCIATES, INC.

Manufacturers' Representatives
 56 S. Squirrel
 Auburn Hills, MI 48326
Jarrett Armstrong, Bill Allen
 Ph 888 472-8982 Fax 248 852-0298
 info@hsbuyvan.com
 hsbuyvan.com

PERFORMANCE ENGINEERING GROUP

Engineered Water Products
 32955 Industrial Rd.
 Livonia, MI 48150
Alan Deal: adeal@performanceengineering.com
 Ph 734 266-5300 Fax 734 266-5310
 performanceengineering.com

PROGRESSIVE PLUMBING SUPPLY

Wholesale Distributor
31239 Mound Road
Warren, MI 48092
Ph 586 756-8662 Fax 586 756-9077
ppsupplyco.com
Locations: Warren, Detroit, Mt. Clemens, and Oxford

R.L. DEPPMANN COMPANY

Manufacturers' Representatives
46575 Magellan Drive
Novi, MI 48377
Gerry Potapa Jr., CPD, Paul Prentice, LEED AP®
Mark Fine, LEED AP®, Chris Lieder
Ph 800 589-6120 Fax 248 354-3763
sales@deppmann.com
deppmann.com

TAGGART-KNIGHT GROUP

Manufacturers' Representatives
37686 Enterprise Ct.
Farmington Hills, MI 48331
Gary O. Taggart
Ph 248 553-4388 Fax 248 553-4653
info@taggartco.com
taggartknight.com

QUALITY WATER & AIR, INC.

Manufacturers' Representative
1402 Souter
Troy, MI 48083
Georgann Kummer, WBE
Ph 248 589-8010 Fax 248 589-8016
qualitywaterair@cs.com
qualitywaterair.com

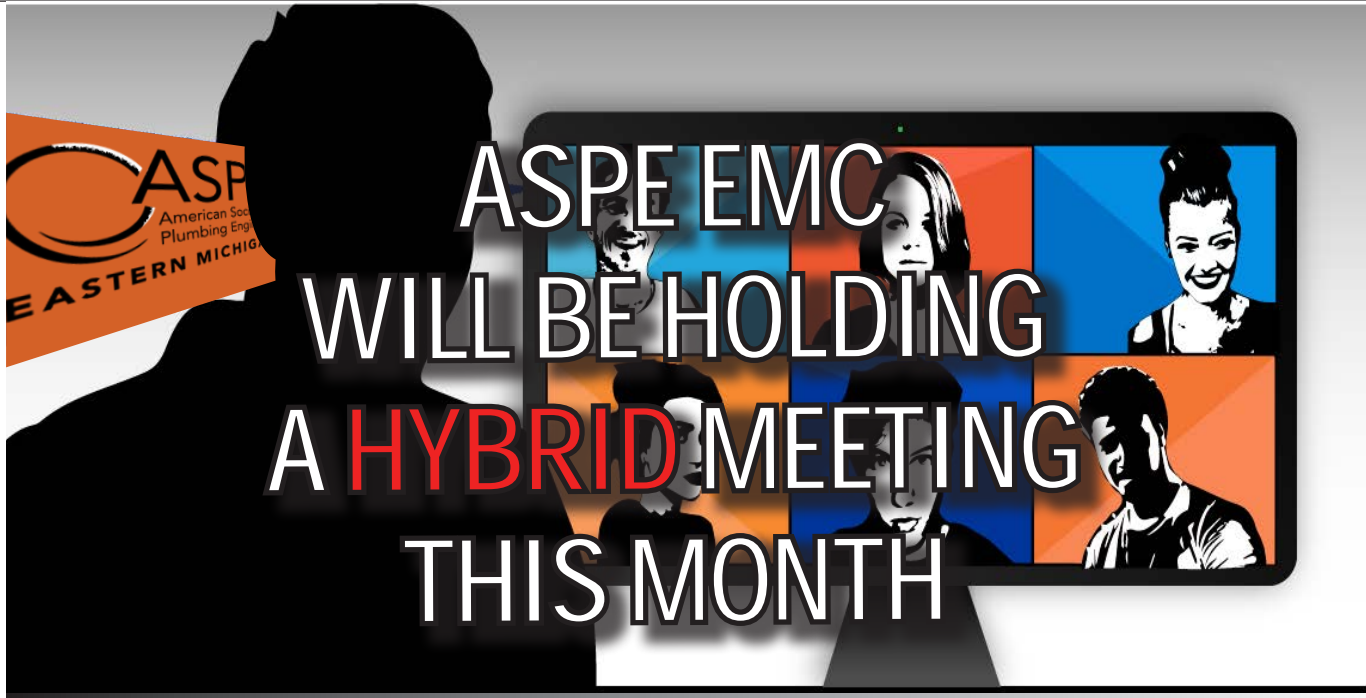
V. E. SALES COMPANY

V. E. Sales is your source for
the finest quality flow control solutions.
25200 Jefferson Ave.
St. Clair Shores, MI 48081
Thomas Van Egmond
Ph 586 774-7760 Fax 586 774-1490
vesalesinc.com

YOUR COMPANY



Place your ad here and expand your company!



2021-2022 ASPE EMC Board

President

Pam Hartsell, CPD, PMP
Strategic Energy Solutions
4000 W. Eleven Mile Rd.
Berkley, MI 48072
(248) 399-1900 x 222
Fax: 399-1901
president.aspe.emc@gmail.com

VP Technical

Theresa Card, P.E., CPD,
LEED AP BD+C
Strategic Energy Solutions
4000 West 11 Mile Rd
Berkley, MI 48072
(248) 399-1900 ext 223
vpt.aspe.emc@gmail.com

VP Legislative

William Grayzar, CPD
28150 Greenfield Rd.
Southfield, MI 48076
(248)569-1430 ext.333
bill@dsonline.com

VP Membership

Kristin Simoneaux, P.E., CPD,
LEED AP
2338 Coolidge Hwy. #100
Berkley, MI 48072
(248) 336-4700
kristin.simoneaux@stantec.com

VP Education

Theresa Card, P.E., CPD,
LEED AP BD+C
Strategic Energy Solutions
4000 West 11 Mile Rd
Berkley, MI 48072
(248) 399-1900 ext 223
vpt.aspe.emc@gmail.com

Treasurer

Rachel Gendich
Strategic Energy Solutions
4000 W. Eleven Mile Rd.
Berkley, MI 48072
(248) 399-1900
Fax: 399-1901
treasurer.aspe.emc@gmail.com

Administrative Secretary

Brianne Hall, P.E., CPD,
LEED AP BD+C, GGP
FTC&H
39500 Mac Kenzie Dr. Suite 100
Novi, MI 48377
(248) 324-4780
bhall@fishbeck.com

Corresponding Secretary

George Johnston II
13050 Northend Ave
Oak Park, MI 48237
(313) 864-2800 Fax: 864-7219
george2@balfrey-johnston.com

Chaper Affiliate/Liaison

Dann Holmes
(248) 921-0582
r2al@aspe.org

AYP Liaison

George Bellman
Strategic Energy Solutions
4000 W. Eleven Mile Rd.
Berkley, MI 48072
(248) 399-1900 x222
Gbellman72@gmail.com

WOA Liaison

Theresa Card, P.E., CPD,
LEED AP BD+C
Strategic Energy Solutions
4000 West 11 Mile Rd
Berkley, MI 48072
(248) 399-1900 ext 223
allethe@gmail.com

Directors

Michael Melaragni, CPD
38958 Lapham Drive | Livonia, MI
48154-1014
(734) 591-9339
mjmelaragni@yahoo.com

Kari Rosteck
(313) 318-6555
kari.rosteck@gmail.com

John Nussbaum, IPP, FASSE,
FASPE
(248) 866-1400
jnussbaum@comcast.net



SPONSOR ADVERTISING OPPORTUNITY INFORMATION

ASPE EMC News is published 9 times per year - September through May.

Yearly advertising for a Business Card ad, which also includes a full Line Card in our sponsors guide:
\$200.00 for members and \$250.00 for non-members.

Graphic Ads - Full Year (9 Issues): Quarter page - \$250.00 ○ Half page - \$350.00 ○ Full page - \$550.00

Checks should be made payable to ASPE EMC and mailed to: Rachel Gendich – Treasurer
c/o Strategic Energy Solution, 4000 W. Eleven Mile Rd., Berkley, MI 48072

Email all digital artwork to: Theresa Green, Newsletter Editor at: theresa.m.green@outlook.com

Circulation 260 - Distributed to: Engineers, Contractors, Inspectors, and other industry professionals in Michigan.

PAY FAST, PAY EASY
Secure Payments Accepted By

