

NOV - MEETING AGENDA

DATE:

TUESDAY, NOV. 8, 2022

WHERE:

IN-PERSON ONLY

**Plumbing Industry Training Center
in Troy, MI**

5:00 PM - 5:50 PM

Venting Session #2 - Common Venting

5:50 PM - 6:15 PM

Vendor Table Top Presentations

6:15 PM

Dinner Service

6:30 PM - 7:30 PM

Natural Gas Design

REGISTRATION REQUIRED

IN-PERSON: <https://www.eventbrite.com/e/aspe-emc-november-2022-technical-program-tickets-446325249837>

SEE INSIDE COVER FOR TABLE OF CONTENTS

William Grayzar, CPD, GPD, FASPE President of ASPE EMC



I hope everyone has or had an enjoyable Halloween. Now that we are moving into the holiday season and the colder weather its time to fire up those furnaces and boilers if you haven't already.

So, what better topic for our November meeting than Natural Gas Piping and Design. Unfortunately, our chapter meeting is being held on super Tuesday, so vote early if you plan to attend. On November 8th, I will provide a technical presentation on

Natural Gas Piping and Design. We will cover the codes and design standards the govern natural gas and learn what is required and how to size gas piping.

Also, the November 8th Design Class will be the second class in the series of seven (7) Plumbing Venting Design Classes will begin promptly at 5:00 pm at the PITC and will cover "Common Venting". Please remember to bring your 2018 Michigan Plumbing Code (MPC) book with you.

Speaking of codes, have you ever been in the middle of a code review or looking through the codes looking for specific item and come across something odd, or that doesn't make sense, or perhaps could not find anything at all, I know I have. If so, feel free to let someone on the Eastern Michigan Chapter board know. Perhaps we can assist you with finding or getting an answer or perhaps discover a needed code revision or addition. The board appreciates the feedback from members who have already presented several code areas needing review and possible modification to the board. Please remember as chapter board members, elected by you, we are here to serve you, our chapter members, with all ASPE related items.

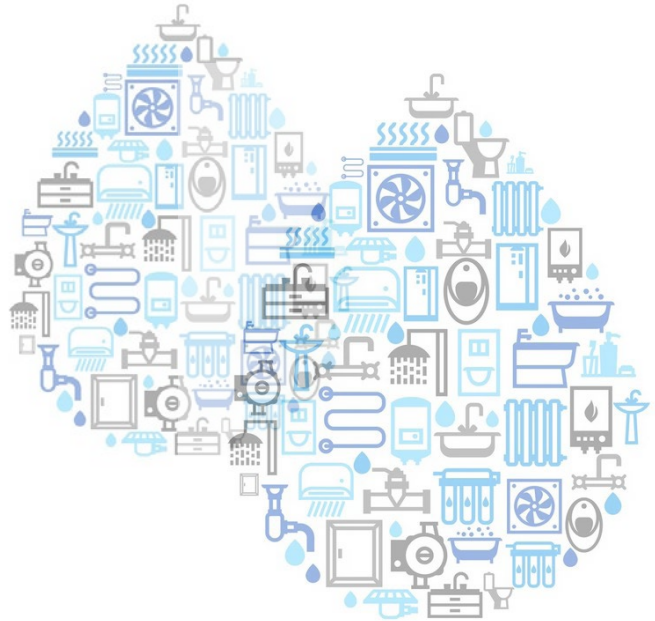
I wish everyone a safe and Happy Thanksgiving and I look forward to seeing you at the Plumbing Industry Training Center on November 8, 2022.

Bill

NOTICES

Contents

President's Report	1
Program	3
In The Know	4
VP Technical Report	5
VP Membership Report	6
ASPE EMC Golfing Event	7
Oct. Meeting Attendance	9
Oct. Meeting Photos	10 - 15
Mentorship	22
Code Study & Development Books . . .	24
Line Card Sponsors	25 - 26



NOVEMBER BOARD MEETING

Virtual Online Meeting
Tuesday, 11/1/22, 4:30 PM

OCTOBER PROGRAM

In-Person Only
Tuesday, 11/8/22, 5:00 - 7:30 PM

ASPE IS ACCEPTING APPLICATIONS FOR THE ALFRED STEELE SCHOLARSHIP

Contact ASPE National for more informa-
tion at (847) 296-0002,
or email info@aspe.org

SAVE THE DATES!

2023 TECH SYMPOSIUM Bellevue, WA

9/28/23 - 10/1/23

2024 CONVENTION & EXPO

Columbus, OH

10/18/24-10/23/24

NOVEMBER DESIGN SESSION

5:00-5:50 PM

TOPIC: Venting Session #2 Common Venting



Michael Melaragni

Presenter: **MICHAEL MELARAGNI,**
CPD

*former Director, Plumbing Industry
training Center*

Michael Melaragni has numerous years of experience in the industry. He is a certified instructor of journey workers and apprentices and a certified training coordinator with the United Association of Plumbers and Pipefitters, a licensed Master Plumber with the State of Michigan and is the former Director of Training for Plumbers Local 98 Apprenticeship program.



Rob Murley

Presenter: **ROB MURLEY,**
Instructor, Plumbing Industry Training Center

Rob Murley is a licensed journeyman plumber and member of UA Local 98 in Detroit Michigan. He is a full time instructor at the Plumbing Industry Training Center and fulfilled his apprenticeship with Local 98 between 2004-2009. Rob's experience stretches from light commercial work to heavy industrial work. Working on schools, restaurant/retail stores, apartments/lofts, hospitals, auto plants, blast furnaces, and several projects at the U.S. steel main plant throughout his career. Murley has also worked as foreman on various jobs, including running crews on larger jobs to running entire jobs. Rob has been a full time instructor at our training facility since May of 2021. Some of the classes he instructs are: Trade Related Math; Pipes; Fittings; Valves and Fasteners; Use and care of tools; Drainage; Michigan State Plumbing Test Prep; Tube Bending; Natural Gas Piping and Venting; and UA Star Exam Preparation. Currently Murley is transitioning to add in the Science and Water Supply classes. Certification include Medical Gas Installation and Backflow Testing. Murley is currently working towards becoming a certified instructor for these classes.

New This Year:

Venting Classes - attend all 7 to earn a venting design manual.

About Registration and CEUs:

You will need to register using an Eventbrite link that will be in the email. This allows us to know how many people we can expect. We require sign in/sign out sheets and your CEUs will be submitted to national within 1 week of our event. It may take up to another 2 weeks for the CEUs to show in your ASPE Education log. The PITC does have guest protocols we will have to obey in order to meet there, so please follow all posted signage and procedures.

NOVEMBER TECH SESSION

6:30-7:30 PM

TOPIC: Natural Gas Design

In this presentation we will review terminology, governing codes, various components, distribution and design considerations, and materials and joining methods associated with fuel gas piping systems. We will review how operating pressures and pressure losses affect system design. We will learn how to determine building total load and how to design and size a building fuel gas piping distribution system.



William Grayzar

Presenter: **WILLIAM GRAYZAR,**
CPD, GPD, FASPE,

*DiClemente Siegel Design / ASPE EMC
President / President of the Code Study and
Development Group of Southeast Michigan*

Mr. Grayzar is the president of the Eastern Michigan Chapter of ASPE. He has over 35 years of experience in architecture and engineering. Employed with DiClemente Siegel Design Inc. for over 20 years, Bill continues to enhance his system engineering skills through additional vocational field training. Bill has an excellent working knowledge of Michigan's current building codes and regulations. Bill holds an Associate's Degree of Architectural Technology from Delta College and certifications in Plumbing Design and Green Plumbing Design from ASPE. Bill is active with the National Society of ASPE serving on numerous committees. Bill also serves as the current President of the Code Study and Development Group of Southeast Michigan and is a member of National Fire Protection Association. Bill received the Michigan Chapter of ASPE award as Engineer of the Year in 2013. Bill was most recently inducted into the ASPE College of Fellows.

IN THE KNOW

EMC 45TH ANNIVERSARY HISTORY BOOK IS STILL AVAILABLE!

Cost for printed book - \$50, check or credit card accepted

Pick up @ SES or during a chapter meeting

FREE digital download on the ASPE EMC website.

TABLE TOP SPONSORSHIP PRICING

ASPE Members

- \$200.00 for the 1st table per meeting/per vendor
- \$150.00 for each additional table per meeting/per vendor

Non-Members

- \$250.00 for the 1st table per meeting/per vendor
- \$200.00 for each additional table meeting/per vendor

If a vendor purchases table tops for 3 meetings during the year, a 4th meeting table top will be provided for free.



Commercial Washrooms. Brought to Life.
HANDWASHING & DRYING | ACCESSORIES | PARTITIONS | LOCKERS

CUTTING-EDGE HANDWASHING TAKES SHAPE

The next generation WashBar raises your restroom to new heights by providing touch-free soap, water and drying in an edgy new design for an unforgettable handwashing experience. The single connection point to the sink provides an impressive design element and creates more open space for cleaning.

ADVANTAGES OF THE WASHBAR

- Floating design for a simple and clean aesthetic
- Single connection point to the sink for easier cleaning
- Eliminates the cost and mess of paper towels
- Icons and LED lights to visually orient users
- Smart sensor technology eliminates false activations
- WashBar and bowl work together to keep water in the basin
- Gallon soap capacity to reduce the number of replacements
- Captures soap and water activations for maintenance planning

The new WashBar WB2 is available with the Verge® LVQ basin in Evero® natural quartz, OmniDeck® 5010 in Terreon® solid surface, or pair with a Terreon solid surface or Evero natural quartz undermount basin with the deck or countertop of your choice.

AVAILABLE IN SIX BEAUTIFUL FINISHES

Brushed Black Stainless Brushed Bronze Brushed Brass Brushed Nickel Brushed Stainless Polished Chrome

ALL-IN-ONE WASHBAR

All the fundamentals of handwashing have been thoughtfully designed into Bradley's Innovative WashBar.

WASHBAR FEATURES

CLEAN

- Touch-free activation
- Low level LED Indicator
- Gallon (3.8 L) soap capacity
- Simply replace soap tank – no cleaning or refilling
- Liquid and foam soap

RINSE

- Touch-free activation
- 0.5 GPM (1.9 LPM)
- Ultra-high efficient 0.35 GPM (1.4 LPM) option where water conservation is a necessity

DRY

- Touch-free activation
- Heated air stream dries hands quickly and efficiently
- Adjustable speed for quieter hand drying

bradleycorp.com
800 BRADLEY • (1 262 251 6000)
W142 N9101 Fountain Boulevard
Menomonee Falls, WI USA 53051

bradleycorp.com/washbar

Represented by New Century Sales:

<p>WEST MICHIGAN Michael Zago D (248) 960-1147 x 107 C (616) 293-2121 E mikez@newcenturysales.com</p>	<p>WEST MICHIGAN Rod Cox D (248) 960-1147 x 116 C (616) 706-1481 E rodc@newcenturysales.com</p>	<p>EAST MICHIGAN Todd Hiller D (248) 960-1147 x 106 C (513) 633-2609</p>	<p>EAST MICHIGAN Ross Beck D (248) 960-1147 x 115 C (734) 673-2119 E rossb@newcenturysales.com</p>
--	--	---	---

www.newcenturysales.com

A TOTAL, STATE-OF-THE-ART HOT WATER SYSTEM, ENGINEERED TO DELIVER A SUPERIOR LEVEL OF USER SAFETY, INFECTION CONTROL AND COMPLIANCE, FROM MECHANICAL ROOM TO THE POINT OF USE.

ABH

GAS-FIRED WATER HEATING

Leading-edge gas-fired institutional hot water generation, built for reliability, efficiency and durability.

THE BRAIN®

THE BRAIN® DIGITAL RECIRCULATION VALVE

Digital hot water temperature control that delivers unparalleled accuracy, stability and safety to mitigate the risk of Legionella and scalding.

RADA DIGITAL FAUCET

RADA DIGITAL FAUCETS

Hands-free, programmable, point-of-use fixtures have The Brain® digital technology built in, and offers thermal disinfection, duty flush, bacterial-resistant design and ASSE 1070 compliance.

ABH

SAGE® SMART HOT WATER SYSTEM MONITORING AND REPORTING

Advanced software provides regular updates, documentation, custom-filtered reports, and real-time alerts for compliance with industry guidelines and Standards of Care.

SAGE® MONITORING

PROGRAMMABLE OPERATION AND FLOW CONTROL

Chip.bidigare@merloenergy.com
(586) 256 - 9822

VP Technical Report

Pam Hartsell, CPD, PMP



Hope you're enjoying (whatever season it is at the moment) here in Eastern Michigan!

October started us on a curious journey thru Chapter 9 of the 2018 Michigan Plumbing Code as we kicked off our Venting Design series with Fundamentals of Venting and Individual Vents, taught by our very

own PITC plumbing instructors, Mike Melaragni and Rob Murley! The session received great feedback, so we're really looking forward to Session #2 – Common Venting in November. If you're able to attend, please bring your copy of the 2018 MI Plumbing Code for reference. If you don't have one yet, code books will be available for purchase at the meeting. Note that the venting classes are proprietary so unfortunately, they cannot be recorded.

October also featured a Technical Presentation on the design of Medical Gas Zone Valves and Zone Valve Boxes/ Alarms, given by our very own VP Membership – Josh Pedraja of Patton's Medical, again with great feedback. If you missed the meeting, you can still view Josh's presentation on our YouTube Channel with the following link: <https://youtu.be/D63LNPhFOZ0>

November will also feature a technical session with our Chapter President, Bill Grayzar, on Natural Gas Design. Bill is back by popular demand with this topic, as he has presented it for us a few times during his years with the chapter, so we already know it's good content from a reliable source!

As a reminder, we'll be offering anyone who attends all 7 venting classes a free book on venting design from the ASPE bookstore! This is a great opportunity to brush up on your venting skills or introduce a less experienced colleague to ASPE and plumbing design. Help us spread the knowledge by bringing a friend to a chapter meeting.

Here is the link to register: <https://www.eventbrite.com/e/aspe-emc-november-2022-technical-program-tickets-446325249837>

We're geared up for another season of learning, my friends! Please reach out to me if I can do anything to help get you and your co-workers to a chapter meeting!

Your Chapter VP Tech,
Pam Hartsell
vpt.aspe.emc@gmail.com

**CLICK HERE TO READ THE LETTER FROM
ASPE NATIONAL'S NEW PRESIDENT**

VP Membership Report

Josh Pedraja



Greetings, Eastern Michigan!!

I know it's a month late, but I would like to reflect on the Convention that occurred in mid-September in Indianapolis. It was a great time to get together as an industry with engineers and suppliers alike. Not only were the business meetings

fantastic, but the Expo was a huge success for everyone involved. I have a true passion for ASPE and the convention boosted that passion. As a supplier, I have the great opportunity to see engineering firms across the country and attend different chapter meetings. I love talking ASPE to other firms and welcome new members, whether it be here in Michigan or in other states! I implore everyone to be active with ASPE, at any level. The more we interact, the stronger we all become as individuals and as a collective group. ASPE is not all about membership dues each year, it's much, much more than that! What you put in is what you get out; showing up to Chapter meetings is just a small part of it. Continuing education, resources, networking, the list goes on! Come out and attend our events and be involved; ASPE can be a lot of fun!! Just like conventions, local chapter meetings and events are the best way to network not only within our immediate area or region, but nationwide with fellow

engineers who have vast experiences and with suppliers that can help your projects. In summary, the convention helped boost my passion for ASPE and I cannot wait to attend the next one down in Columbus (Ohio)!

ATTENTION STUDENTS:

DID YOU KNOW that ASPE also offers scholarships to qualifying students up to \$3,000?! Please check out the Alfred Steele scholarship at <https://www.aspe.org/membership-global-community/membership/alfred-steele-scholarship/> for more information and application. **The deadline for entry is January 31st.**

This scholarship is named in honor of Alfred Steele, PE, a long-time member of the American Society of Plumbing Engineers and a visionary and pioneer in advocating education and professional development for plumbing engineers and designers.

We highly recommend you apply for this scholarship as our very own Chapter Officer, Rachel Gendich (Treasurer) was a recipient of this scholarship and she has benefited tremendously from it! As former college students ourselves, we know that every scholarship helps and some are life changing!!

If you are a supplier or manufacturer's rep that is visiting engineering firms again, please reach out to us if you know of a firm that has engineers that are not signed up with ASPE, so we can reach out to them!!



Engaging, retaining and advancing women in the industry.

Become involved, contact a board member or go to:
<https://www.aspe.org/membership-global-community/membership/special-interest-groups/women-of-aspe/>



CLICK IN BOXES FOR MORE INFO



Engaging, retaining and advancing young professionals in the industry.

Become involved, contact a board member or go to:
<https://www.aspe.org/membership-global-community/membership/special-interest-groups/ayp/>



Coming Soon! EMC's First Annual Golf Outing!

Please let us know if you're interested in serving on our Golf Committee or if you'd like to sign up as a sponsor!!

Please Contact Josh Pedraja; vpm.aspe.emc@gmail.com

ASPE Pipeline

News for the Plumbing System Design Industry

The only news site dedicated exclusively to ASPE, our members, and the plumbing engineering industry



ETV *Platinum Plus*

ELECTRONIC TEMPERING VALVE



Designed for Critical Temperature DHW Application

- Maintains Set Point within +/- 2°F

Safeguard Against High Temperature Conditions

- Optional High Temp Limit Valve
- Alarm Output

Maintenance Free

- Stainless Steel Valve Body reduces Scale Buildup
- External Actuator Eliminates Gasket Maintenance



ETS AND ETS-LT

ELECTRONIC TEMPERING STATION

Pre-wired and Pre-Piped Assembly

- Contains ETV Platinum Plus
- Includes all Fittings, Isolation Valves

Wall Mounted and Floor Mounted

- Minimal Footprint
- Sizes from 3/4" to 4"



Conforms to the following:

ASSE 1017

California Lead Free Plumbing Law

CSA B 125.3 (NSF/ANSI 61 Section 8)



Major Lozuaway and Associates

Mike Ostrowski

1117 W. Grand Blanc Road

Grand Blanc, MI 48439

Phone: 810-287-6983

Email: moski@lozuaway.com

OCTOBER MEETING

THANK YOU TO OUR ATTENDEES!

Jacob Baird
George Bellman
Adrienne Bennett
Chip Bidigare
Brian Chinery
MohdEslam Dahdolan
Larry D'Ascenzo
Bill Edgerton
Robert Frey
Rachel Gendich
Rufina Golshteyn

Andy Grajek
William Grayzar
Pamela Hartsell
Stephanie Hoff
Dann Holmes
William Johnson
Mike Kennedy
Hank Koppelo
John Leclerc
Sean McIntosh
Joshua Pedraja

Brenda Pesmark
Mike Pietrzak
Scott Roberts
Kristin Simoneaux
Michael Taggart
Brandon Watts
Madeleine Yaw
Cindy Zatto
Lama Zuabi

EDUCATION AND CREDENTIALING

CPD-Certified in Plumbing Design

CPDT-Certified Plumbing Design Technician

GPD-Green Plumbing Design



Click on the credential
to obtain more info.

OCTOBER MEETING PHOTOS



We had a nice turnout, with several newcomers!



Some of our Awards from the 2022 Convention were displayed at the mtg.

OCTOBER MEETING PHOTOS



Mike Melaragni and Rob Murley Kicked off the Venting Series in October



Dinner from Lukich Family Restaurant was delicious!

OCTOBER MEETING PHOTOS



Attendees enjoyed learning about products from our tabletop sponsors



Josh Pedraja of Pattons Medical presented on medical gas valves, zone valves and alarms

OCTOBER MEETING PHOTOS



EMC President Bill Grayzar presents Josh Pedraja with a Certificate of Appreciation



Congratulation to Brandon Watts on winning the raffle - a \$30 giftcard!

OCTOBER MEETING PHOTOS



Thank you Medlock for sponsoring the meeting!



Thank you Pattons Medical for sponsoring the meeting!

OCTOBER MEETING PHOTOS

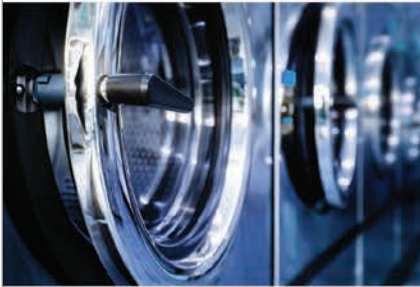


Thank You Taggart-Knight for sponsoring the meeting!

**IAMPO SOLICITS PUBLIC COMMENT FOR
THE 2023 WE*STAND, 2024 USHGC AND
USPSHTC - SEE ARTICLE ON THE ASPE
NATIONAL SITE -**

source: <https://www.aspe.org/pipeline/iapmo-solicits-public-comments-for-the-2023-westand-2024-ushgc-and-uspshtc/>

COMMERCIAL POWER AND PERFORMANCE. BRADFORD WHITE QUALITY.



Your commercial customers need exceptional quality, performance, efficiency and reliability. Whether it's a hotel, restaurant, office building, school or industrial facility, Bradford White's proven commercial products deliver for your customers:

- **eF Series® Ultra High Efficiency Commercial Gas Water Heaters** offer up to 97% Thermal Efficiency. They feature BMS integration for remote monitoring for quicker, easier troubleshooting.
- **ElectriFLEX Series™ Commercial Electric Water Heaters** are field-convertible so a single model solves multiple installation requirements.
- **Brute® Series Condensing Hydronic Boilers & Volume Water Heaters** deliver modulation down to 20% of full fire (5:1 turndown) to serve a wide range of commercial water heating and space heating applications.

See our Full Commercial Line at bradfordwhite.com/commercial

FOR THE PRO



Represented by: Burke Agency, Inc.

Replacing Your Water Heater Every Few Years is Not Our Business Plan



Conquest[®] condensing, gas-fired water heaters are constructed from AquaPLEX[®] duplex stainless steel so they're corrosion-resistant in potable water at any temperature. Available in 199-1000 MBH, Conquest provides even more BTUs in small spaces and fits through a standard 36-inch doorway. With a thermal efficiency of up to 96%, long product life and a 15-year tank and heat exchanger warranty, you can't afford not to have one.

Call R.L. Deppmann or visit our Monday Morning Minutes blog at deppmann.com for information on PVI Water Heaters
800.589.6120



800.784.8326 | pvi.com

TOPGOLF AUBURN HILLS: QuantumFlo Booster, Beeco RPZ, & Beeco Automatic Control Valve



GM Flint Assembly Plant: Hubbell Model EMV120-85-1.5SLA-A-XX Electric Tepid Water Heater



Velocity Boiler, Previously Crown Boiler

CRANE PUMPS & SYSTEMS

CRANE PUMPS & SYSTEMS



BOILERS & COMBINATION UNITS

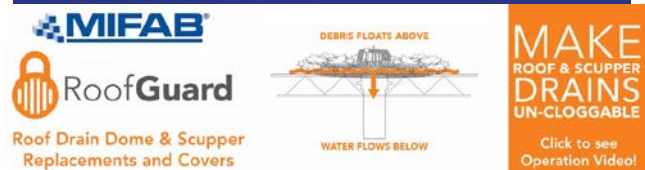
RIELLO

Energy For Life



QUALITY WATER & AIR: (248)589-8010

MIFAB PRODUCT LINE





EDUCATION



PUBLIC VENUES

COMMERCIAL OFFICES

T&S IS HERE >

T&S is proud to be a trusted name across a wide range of markets — staying at the forefront of today’s evolving industry and providing a vast selection of reliable solutions that meet required codes and compliances.

Learn more at tsbrass.com/markets.

Find us in



HEALTHCARE



T&S plumbing products represented in Eastern Michigan by: Diversified Spec Sales - 248-398-2400



New Century Sales, Inc.
Manufacturer's Representatives



COPPERPRESS® SYSTEM BENEFITS

- Size range from 1/2” to 4”
- Green visual applicaton bands
- Consistent wall thickness on all products
- Leak before press systems
- Less equipment required
- Compatibility of fittings and tools

www.copperpress.com

Approvals & Certifications

- NFS ANSI/CAN 61
- UPC
- cUPC
- IPC
- IAPMO PS-117
- ICC-ES-PMG
- ASME B16.51



ISOTUBI USA

Stainless Steel Press Solutions

<https://isotubi-usa.com>

Represented by New Century Sales:

WEST MICHIGAN

Michael Zago
C (616) 293-2121

E mikez@newcenturysales.com

WEST MICHIGAN

Rod Cox
C (616) 706-1481

E rodcd@newcenturysales.com

EAST MICHIGAN

Todd Hiler
C (513) 633-2609

E todhd@newcenturysales.com

EAST MICHIGAN

Ross Beck
C (734) 673-2119

E rossb@newcenturysales.com

www.newcenturysales.com

MegaPress® G

Press safer.
**Press
bigger.**



Connected in quality.

Quick, safe connections on large diameter gas lines.

Viega MegaPress(R)G requires no open flames or added cost of fire watch, so projects are safer and more profitable. Installers can secure gas pipe up to 4" in 16 seconds or less, saving 60-90% on labor costs. That's why professionals choose MegaPressG - the trusted press connection method approved for gas lines ½" to 4".

Carl Petitt
Technical Manager
(614) 852-2691
carl.petitt@viega.us

Michael Norgan
District Sales Manager
(989) 415-2431
michael.norgan@viega.us

ALL-IN-ONE SCALD PROTECTION



420-T Series

Now there's no need to install a thermostatic mixing valve below the sink. The new 420-T Series combines Chicago Faucets durability with integrated scald protection. The result is a solid, easy-to-install restroom faucet that complies with ASSE 1070 requirements. With the 420-T, everything you need to meet current building codes and protect users against scalding is built right into the faucet.

Visit chicagofaucets.com or call your local representative for more information.

Taggart-Knight Group
248/553-4388
info@taggartknight.com





New Century Sales, Inc.
Manufacturer's Representatives

EAST MICHIGAN
1715 Traditional Dr.
Commerce Township, MI 48390
P (248) 960-1147 F (248) 960-1149

WEST MICHIGAN
550 36th St. SE
Grand Rapids, MI 49548
P (616) 600-9660

 AMTROL Expansion Tanks www.amtrol.com	 BASCO Shower Doors www.bascoshowerdoor.com	 Bradley Washroom Solutions www.bradleycorp.com	 CALEFFI Hydronic Solutions Hydronic Accessories www.caleffi.com/usa/en-us	 COPPER PRESS  ISOTUBIUSA Plumbing Fittings www.copperpress.com www.isotubi-usa.com	
 FAIRMONT designs Bath Furniture www.fairmontdesigns.com	 General Wire Spring Company Sewer Cleaning Machines www.drainbrain.com	 genova PVC Products www.genovaproducts.com	 IBC Better Boilers www.ibcboiler.com	 Just manufacturing EST. 1933 Stainless Steel Sinks www.justmfg.com	
 MATCO NORCA Valves and Fittings www.matco-norca.com	MYERS™ Water and Waste Pumps www.femyers.com	 Oasis Fiberglass & Acrylic Tub & Showers www.oasisbath.com	 OASIS Oasis Water Coolers www.oasiscoolers.com		
 OATEYSCS Supply Chain Services  www.oatey.com	 Panasonic USA Bath Fans https://na.panasonic.com/us/home-living-solutions/ventilation-indoor-air-quality/	 PEXGUN AUTOMATIC PEX PIPE THE TOOL Pipe Installation Tools https://pexgun.com/			
 REHAU Unlimited Polymer Solutions PEX Plumbing Products www.rehau.com/us-en	 Rheem RUUD Water Heaters www.rheem.com www.ruud.com	 STRASSER woodworks Bathroom Vanities & Cabinets www.strasserwood.com	 TURBOTORCH Brazing & Soldering https://www.esabna.com/us/en/products/gas-equipment/brazing-and-soldering/index.cfm		
 StanleyBlack&Decker  DEWALT www.dewalt.com  IRWIN TOOLS www.irwin.com  LENOX www.lenoxtools.com				 LIXIL Link to Good Living  American Standard www.americanstandard-us.com  DXV www.dxv.com  FIAT PRODUCTS www.fiatproducts.com  GROHE www.grohe.us/en_us	

www.newcenturysales.com

ASPE Mentoring Program

The Women of ASPE are excited to introduce ASPE's new Mentoring Program!

This program, which is available to all members of the Society, has been designed to connect ASPE members who have a particular skill set (mentor) with individuals (mentee) who are searching to acquire the same skills to develop and make progress toward their personal and professional goals.

Who Is a Mentor?

A mentor is someone who can help the mentee develop skills for success and long-range career planning, is able to be a good listener, is willing to share experiences and views, is willing to commit time and effort, provides an "open door" to questions and problems, points out both strengths and opportunities for improvement, and has a vested interest in the growth and development of their mentee.

Benefits to the mentor:

- Satisfaction in helping someone mature, progress, and achieve goals
- Meeting and sharing experiences with other mentors
- Personal ongoing support to help the mentee succeed
- Personal fulfillment through contribution to the Society and the individual

Who Is a Mentee?

Having a mentor can contribute to a successful and satisfying career. Without a mentor, that learning occurs mostly through trial and error. With a mentor, even experienced professionals can benefit from the experiences and expertise of someone who has withstood the trial and can help the mentee avoid the mistakes. Similarly, those new to the industry will discover that being a mentee shortens the learning curve for acquiring the skills and knowledge most critical to a fruitful career.

Benefits to the mentee:

- Discover new talents about yourself
- Career satisfaction
- Expand your personal network
- Maximize your strengths

For more information click below:

<https://connect.aspe.org/aspe-mentor-match/mentoring>



BRANDS WE REPRESENT



BRANDS WE DISTRIBUTE



Natural Gas / Propane / Electric
85,000 to 10,000,000 BTU's
- ALSO -
Holby Thermostatic Mixing Valves



Jamie Caporosso: jamie@kerrpump.com
12880 Cloverdale, Oak Park, MI 48237
Ph.: (248) 543-3880 Fax: (248) 543-3236

Liquid Pumps
Vacuum Pumps
Heat Exchangers
Blowers
Related Equipment
and Accessories

Sales • Service • Repair



AURORA FIRE PUMPS

Compact Fire Pump Systems

- UL Listed/FM Approved Aurora Fire Pump
- UL Listed/ FM Approved Fire Pump Controller
- Capacities of 50-750 Gpm.
- Pressures of 40-160 Psi.
- Aurora Model PVM (close coupled to an ODP motor.)

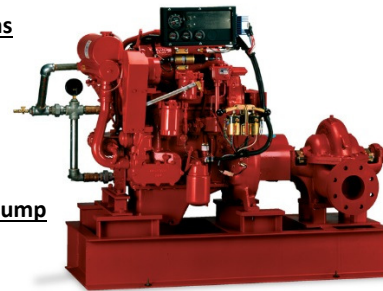
Vertical Split Case Electric Drive Fire Pump

- Electric Driven
- For Commercial, Industrial and Marine use only.
- UL Listed/ FM Approved/NFPA-20 Design

Horizontal Split Case Diesel Drive Fire Pump

- Diesel and Electric driven available.
- Flows at 250 gpm to 5000 gpm.
- Pressures available up to 490 Psi.

PLEASE INQUIRE TO KERR PUMP FOR PRICING,
SELECTIONS, OR TESTING ON EXISTING.
ALSO, PLEASE SEE www.aurorapump.com



Michigan's Oldest Supplier of Pumps and Process Equipment - 1905

Code Study and Development Group of Southeastern Michigan

Item No.	Description	Price Each*	Order Date
3200S18MI	2018 MI Plumbing Code	\$ 89.50	
3300S18MI	2018 MI Mechanical Code (Not Yet Available)	\$ 89.50	PO Number
3200S18	2018 IPC without Commentary	\$ 86.00	(If required)
3210S18	2018 IPC with Commentary	\$ 112.00	
3300S18	2018 IMC without Commentary	\$ 86.00	
3310S18	2018 IMC with Commentary	\$ 112.00	
3600S18	2018 IFGC without Commentary	\$ 86.00	
3610S18	2018 IFGC with Commentary	\$ 112.00	
3000S18	2018 International Building Code	\$ 130.00	
3000S15MI	2015 MI Building Code	\$ 139.00	
3100S15MI	2015 MI Residential Code	\$ 126.00	
3550S15MI	2015 MI Rehab for Existing Bldgs	\$ 90.00	
3800S15MI	2015 MI Energy Code	\$ 48.00	
3600S15	2015 IFGC without Commentary	\$ 84.00	
3310S15	2015 IMC with Commentary	\$ 109.00	
		\$ -	

- **Payment MUST accompany order / verify your preferred delivery method**
- **Credit cards, cash or company check accepted.**
- Dann Holmes - buildingwaterhealth@outlook.com or (248) 921-0582
- If orders are to be mailed, call Dann and you will be advised of additional freight charges.
- **Make check payable to: Code Study & Development Group of SE Michigan**

Mailing Address: **Will be given upon placement of order**

Item No.	Description	Quantity	Unit Price	Item Total	Status
				\$ -	
				\$ -	
				\$ -	
				\$ -	
				\$ -	
				\$ -	
				\$ -	
				\$ -	
				\$ -	
				\$ -	

Total books subject to incoming ICC Frgt charges **0**

Client Information		Order Details
Company		Sub-Total \$ -
Address	Add \$5 per book (Outgoing Frgt Charge)	ICC Frgt \$ -
City		USPS Frgt \$ -
State		MI Sales Tax \$ -
Zip-Code		Invoice Total \$ -
Contact Information		
Attention		Received By: _____
E-Mail		
Phone		

Check No. _____ or Cash _____ Date Paid _____

Credit Card Approval No. _____

***Supersedes all pricing forms printed before October 19, 2021**

2021 Code Study Order Form

BALFREY & JOHNSTON, INC.

Manufacturers' Representatives
13050 Northend
Oak Park, MI 48237
Ph 313 864-2800 Fax 313 864-7219
George D. Johnston: george@balfrey-johnston.com
balfrey-johnston.com

J.W. SALES, INC.

Manufacturers' Representative
1570 E. Highwood
Pontiac, MI 48340
O: 248.745.8590 F: 248.745.0889
Thomas Huck: thomash@jwsalesinc.net
C: 248-602-1575
Michael Fedorinchik: mikef@jwsalesinc.net
JWsalesinc.net

BURKE AGENCY, INC.

Manufacturers' Representatives
2605 E. Oakley Park Road, Suite A,
Commerce Twp, MI 48390
Ph 248 669-2800 Fax 248 669-3310
Brian Burke, Peter Lapham, John Taylor
bburke@burkeagency.com
burkeagency.com

KERR PUMP AND SUPPLY

Manufacturers' Representatives
12880 Cloverdale
Oak Park, MI 48237
Ph 248 543-3880 Fax 248 543-3236
Tyler Palchak: tpalchak@kerrpump.com
Direct: 248-826-9414
kerrpump.com

DALE PRENTICE COMPANY

Manufacturers' Representatives &
Application Engineering Solutions Provider
26511 Harding Avenue
Oak Park, MI 48237
Ph 800 536-4700 Fax 248 339-5559
Michael Cullen: mcullen@prenticeco.com
Mobile 248 302-5924
prenticeco.com

LOCHINVAR

High Efficiency Water Heaters and Boilers
45900 Port Street
Plymouth, MI 48170
Ph 734 454-4480 Fax 734 454-1790
Jason Loverich: jloverich@lochinvar.com
lochinvar.com

DAVE WATSON ASSOCIATES, INC.

Manufacturers' Representatives
1325 W. Beecher St.
Adrian, MI 49221
Ph 517 263-8988 Fax 517 263-2328
Rick Johnston: rjohnston@davewatson.biz
davewatson.biz

MAJOR/LOZUAWAY & ASSOCIATES, INC.

Manufacturers' Representatives
1117 W. Grand Blanc Rd.
Grand Blanc, MI 48439
Ph 810 234-1635 Fax 810 234-8389
Mike Ostrowski: moski@lozuaway.com
Mobile 810 287-6983
Bill Campbell, PE: bill@lozuaway.com
Mobile 810-287-0029

**DIVERSIFIED SPEC. SALES, INC./
HOWLEY AGENCY SALES CO.**

Manufacturers' Representative
13261 Northend Ave.
Oak Park, MI 48237-3265
Brendan Burdette: bburdette@dsshowley.com
Ph 248 398-2400 Fax 248 547-4905
diversifiedspec.com

NEW CENTURY SALES, INC.

Manufacturers' Representatives
1715 Traditional Dr.
Commerce Township, MI 48390
Ph 248 960-1147
Ross Beck: rossb@newcenturysales.com
Mobile 734 673-2119
Todd Hiler: toddh@newcenturysales.com
Mobile 513 633-2609
newcenturysales.com

HS/BUY VAN ASSOCIATES, INC.

Manufacturers' Representatives
56 S. Squirrel
Auburn Hills, MI 48326
Jarrett Armstrong
Ph 888 472-8982 Fax 248 852-0298
info@hsbuyvan.com
hsbuyvan.com

PAULA. BAKER

ASSE Region #4 Director - Mid West
ASSE International
18927 Hickory Creek Drive, Suite 220
Mokena, IL 60448
Ph 313 399-3072 Fax 248 585-1437
Paul Baker: paul.baker@ualocal98jatc.org
www.asse-plumbing.org

PERFORMANCE ENGINEERING GROUP

Engineered Water Products
32955 Industrial Rd.
Livonia, MI 48150

Alan Deal: adeal@performanceengineering.com
Ph 734 266-5300 Fax 734 266-5310
performanceengineering.com

R.L. DEPPMANN COMPANY

Manufacturers' Representatives
46575 Magellan Drive
Novi, MI 48377

Gerry Potapa Jr., CPD, Paul Prentice, LEED AP®
Mark Fine, LEED AP®, Chris Lieder
Ph 800 589-6120 Fax 248 354-3763
sales@deppmann.com
deppmann.com

PROGRESSIVE PLUMBING SUPPLY

Wholesale Distributor
31239 Mound Road
Warren, MI 48092

Ph 586 756-8662 Fax 586 756-9077
ppsupplyco.com

Locations: Warren, Detroit, Mt. Clemens, and Oxford

TAGGART-KNIGHT GROUP

Manufacturers' Representatives
37686 Enterprise Ct.
Farmington Hills, MI 48331

Gary O. Taggart
Ph 248 553-4388 Fax 248 553-4653
info@taggartco.com
taggartknight.com

QUALITY WATER & AIR, INC.

Manufacturers' Representative
1402 Souter
Troy, MI 48083

Georgann Kummer, WBE
Ph 248 589-8010 Fax 248 589-8016
qualitywaterair@cs.com
qualitywaterair.com

V. E. SALES COMPANY

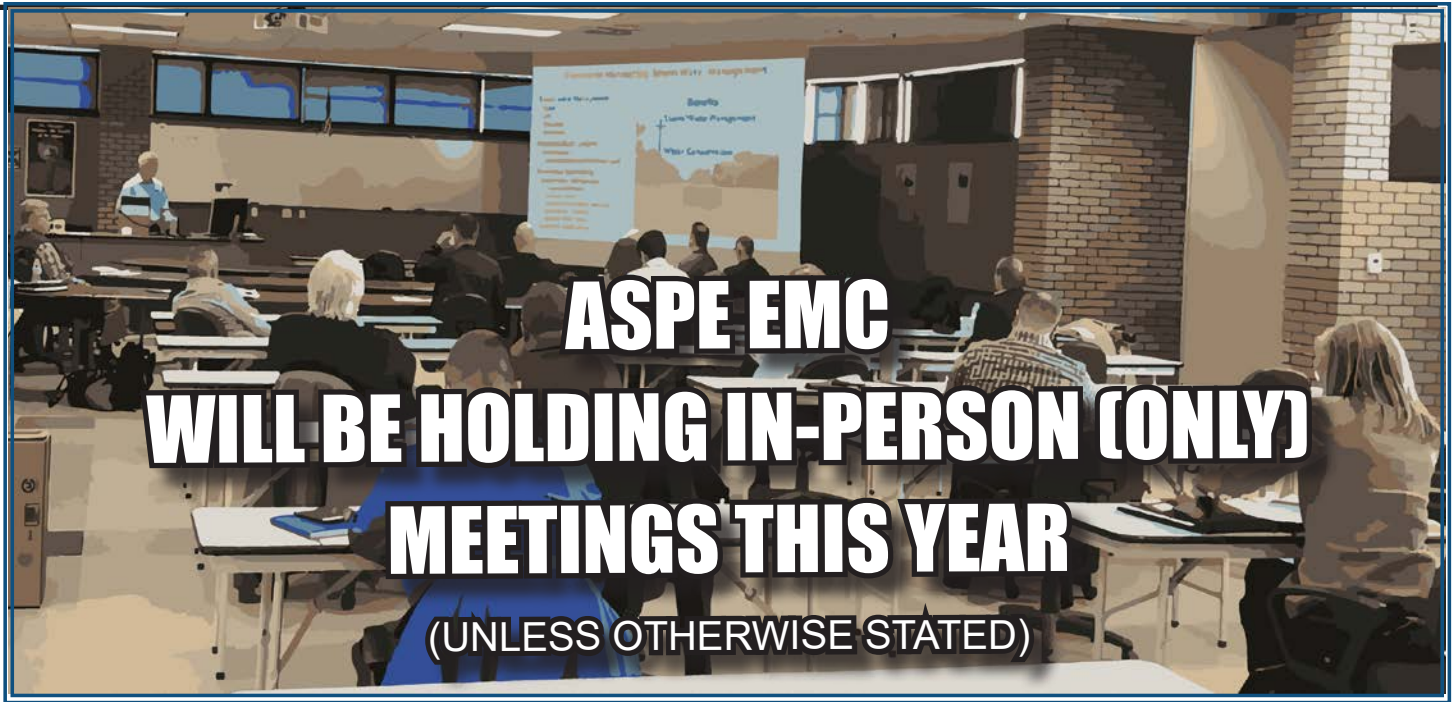
V. E. Sales is your source for
the finest quality flow control solutions.
25200 Jefferson Ave.
St. Clair Shores, MI 48081

Thomas Van Egmond
Ph 586 774-7760 Fax 586 774-1490
vesalesinc.com



INCREASE
EXPAND
GROW
MULTIPLY

Place your ad here and expand your company!



ASPE EMC WILL BE HOLDING IN-PERSON (ONLY) MEETINGS THIS YEAR (UNLESS OTHERWISE STATED)

2022-2023 ASPE EMC Board

President

William Grayzar, CPD
28150 Greenfield Rd.
Southfield, MI 48076
(248) 569-1430 ext. 333
bill@dsonline.com
president.aspe.emc@gmail.com

VP Technical

Pam Hartsell, CPD, PMP
Strategic Energy Solutions
4000 W. Eleven Mile Rd.
Berkley, MI 48072
(248) 399-1900 x 222
Fax: 399-1901
vpt.aspe.emc@gmail.com

VP Legislative

Ryan Lyle
Director of Training PITC
1911 Ring Drive
Troy, MI 48083-4229
248-585-1435 ext. 122
Ryan.Lyle@ualocal98jtc.org

VP Membership

Josh Pedraja
Toledo, OH | Central USA
4610 Entrance Drive, Suite H
Charlotte, NC 28273
616-307-5968
josh.pedraja@pattonsmmedical.com

VP Education

Kristin Simoneaux, P.E., CPD,
LEED AP
2338 Coolidge Hwy. #100
Berkley, MI 48072
(248) 336-4700
kristin.simoneaux@stantec.com

Treasurer

Rachel Gendich
Strategic Energy Solutions
4000 W. Eleven Mile Rd.
Berkley, MI 48072
(248) 399-1900
Fax: 399-1901
treasurer.aspe.emc@gmail.com

Administrative Secretary

George Johnston II
13050 Northend Ave
Oak Park, MI 48237
(313) 864-2800 Fax: 864-7219
george2@balfrey-johnston.com

Corresponding Secretary/ VP Social Media

Josh Pedraja
Toledo, OH | Central USA
4610 Entrance Drive, Suite H
Charlotte, NC 28273
616-307-5968
josh.pedraja@pattonsmmedical.com

Chaper Affiliate/Liaison

Chip Bidigare
23350 15 Mile Rd.
Clinton Township, MI 48035
586-755-3110 x 5938
chip.bidigare@merloenergy.com

AYP Liaison

Rachel Gendich
Strategic Energy Solutions
4000 W. Eleven Mile Rd.
Berkley, MI 48072
(248) 399-1900
Fax: 399-1901

WOA Liaison

Theresa Card, P.E., CPD,
LEED AP BD+C
Strategic Energy Solutions
4000 West 11 Mile Rd
Berkley, MI 48072
(248) 399-1900 ext 223
allethe@gmail.com

Directors

Michael Melaragni, CPD
38958 Lapham Drive | Livonia,
MI 48154-1014
(734) 591-9339
mjmelaragni@yahoo.com

Theresa Card, P.E., CPD,
LEED AP BD+C
Strategic Energy Solutions
4000 West 11 Mile Rd
Berkley, MI 48072
(248) 399-1900 ext 223

Brianne Hall, P.E., CPD,
LEED AP BD+C, GGP
FTC&H
39500 Mac Kenzie Dr. Suite 100
Novi, MI 48377
(248) 324-4780
bhall@fishbeck.com

Dann Holmes
(248) 921-0582
r2al@aspe.org



SPONSOR ADVERTISING OPPORTUNITY INFORMATION

ASPE EMC News is published 9 times per year - September through May.

Yearly advertising for a Business Card ad, which also includes a full Line Card in our sponsors guide:
\$200.00 for members and \$250.00 for non-members.

Graphic Ads - Full Year (9 Issues): Quarter page - \$250.00 ○ Half page - \$350.00 ○ Full page - \$550.00

Checks should be made payable to ASPE EMC and mailed to: Rachel Gendich – Treasurer
c/o Strategic Energy Solution, 4000 W. Eleven Mile Rd., Berkley, MI 48072

Email all digital artwork to: Theresa Green, Newsletter Editor at: theresa.m.green@outlook.com

Circulation 260 - Distributed to: Engineers, Contractors, Inspectors, and other industry professionals in Michigan.

PAY FAST, PAY EASY
Secure Payments Accepted By

