

NOV - MEETING AGENDA

DATE:

TUESDAY, NOVEMBER 9, 2021

WHERE:

This will be a HYBRID Meeting

**Plumbing Industry
Training Center in Troy, MI**

5:00 PM - 6:00 PM

**Right Sizing Plumbing Systems -
Water Heaters**

6:00 PM - 6:30 PM

Dinner Break

6:30 PM - 7:30 PM

**Submersible Pumps -
Types, Applications and Sizing**

REGISTRATION REQUIRED

IN-PERSON: <https://www.eventbrite.com/e/aspe-emc-november-2021-technical-program-tickets-194620494137>

VIRTUAL: <https://education.aspe.org/products/eastern-michigan-chapter-meeting-right-sizing-water-heaters-submersible-pumps-types-and-applications-nov-2021>

SEE INSIDE COVER FOR TABLE OF CONTENTS

From Pam Hartsell, CPD, PMP President of ASPE EMC



Hello Eastern Michigan Chapter Members and Friends!

Last month we once again enjoyed informative and thought-provoking sessions, hosted by Veteran Chapter Member and Industry Expert, Mr. Alan Deal. Alan delivered the early session, a design class on how using metered flow rates and the new Water Demand Calculator from IAPMO can reduce both our water pipe sizes and our water heating equipment, saving money and resources. The later session consisted of a

panel of professionals who shared their specialized knowledge of the different utility incentives that are currently available from DTE and Consumer's Energy, which was another insightful take on how energy efficient design is being emphasized and rewarded. You can find more detailed info and a link to the recording in the VP Tech Report here in the newsletter.

November promises more transformational design inspiration with a presentation on right-sizing water heaters, as well as a great overview of submersible pumps. This will be another hybrid meeting, so feel free to join us in-person or online. See the VP Tech Report for details and a link to register.

I'm excited to share that we're involved in another charitable service project this year! In partnership with The Engineering Society of Detroit, we'll be collecting toys for local families in need at our November and December meetings. We are requesting new, unwrapped toys for children of all ages – infant to 18. If you have the desire to "give", like I do, please consider donating a little something for these deserving kids. They didn't create the circumstances they're in, and a little joy goes a long way :)

The dates for the 2022 Convention have been announced! Start planning now to join your fellow chapter and society members in Indy next September! More details are available at aspe.org.

Follow our LinkedIn page to keep up to date on what Your Chapter and fellow chapter members are up to: <https://www.linkedin.com/in/aspe-eastern-michigan-chapter-6333251b7/>

A Fantastic Fall is in the air at the EMC, and we're glad you are a part of it!

Your Chapter President,

Pam Hartsell
president.aspe.ec@gmail.com

Contents

President's Report 1 - 2
Program 3
In The Know 4
EMC 45th Anniv. History Book 5
VP Technical Report 6
VP Legislative Report 7
VP Membership Report 8
Job Posting 12 - 13
October Attendees 14
Photos 15 - 17
ASPE Expo & Convention 2022 18
Code Study & Development Books . . . 21
Mentoring Program 26
Line Card Sponsors 27 - 28

NOVEMBER BOARD MEETING

Virtual Online Meeting 11/2/2021 @ 4:30 PM

NOVEMBER PROGRAM

HYBRID Meeting 10/9/2021, 5:00 - 7:30 PM

ASPE IS ACCEPTING APPLICATIONS FOR THE ALFRED STEELE SCHOLARSHIP

Contact ASPE National for more information at (847) 296-0002, or email info@aspe.org

Save the Date

ASPE and the International Association of Plumbing and Mechanical Officials (IAPMO) are co-hosting "The Water Demand Calculator: Updating the Hunter's Curve Summit," a virtual event on November 4, 2021, from 9 a.m. to 5 p.m. CST.

Updating the Hunter's Curve Virtual Event

Virtual Event
November 4, 2021

**LATEST NEW MEMBER
~ WELCOME ~**

AARON STUROS

NOVEMBER DESIGN SESSION

5:00-6:00 PM

TOPIC: Right Sizing Plumbing Systems - Water Heaters

This presentation will cover right sizing domestic water heaters taking into account new codes, standards and industry recommendations.



**Presenter: Mark Daniszewski
Northeast Regional Sales Manager
for Intellihot**

Mark is the Northeast Regional Sales Manager for Intellihot. Mark has a B.S. in Mechanical Engineering from Rutgers University in New Brunswick, NJ, and he has over 20 years of industry experience. He is experienced as an

Mark Daniszewski MEP consulting engineer, a manufacturer's Rep, as well as an RSM for multiple manufacturing companies.

NOVEMBER TECHNICAL SESSION

6:30-7:30 PM

TOPIC: Submersible Pumps - Types, Applications and Sizing

This presentation will cover everything you need to know about submersible pumps! We will cover the different types of pumps, their applications and how to size them. The presentation will also be sure to clarify why smaller piping is used for pumped waste vs gravity waste as well as an overview of control panels and floats.



**Presenter: Adam Flint, CPD
Midwest Regional Sales Manager,
Liberty Pumps**

Adam graduated from high school in 1995 and went directly into the US Army at Ft. Hood. He served 10 years (4 years active duty and 6 years with the National Guard). He has been with Liberty pump since 1998 – starting in the maintenance/service department then moving to technical support, marketing and finally to Regional Sales Manager. Adam has directed many factory tours and countless training sessions with contractors, engineers and wholesalers. He possesses a wealth of pump knowledge including products, applications/sizing, and troubleshooting! Adam has (3) daughters and when he is not working he enjoys a nice round of golf.

About Registration and CEUs:

If you are attending virtually: there is a link to register via the ASPE Education page. Please follow all directions. Using this platform for virtual meetings allows us to streamline the CEU process. So all attendees that plan to join virtually, need to register via the corresponding ASPE Education link. Our meetings will also be listed on the ASPE Education calendar, so you can find registration info there as well. <https://education.aspe.org/>

There is also a passcode that needs to be entered for the virtual meetings now. This passcode is in the email invite as well as listed in the webinar instructions.

If you will attend in person (when we can offer this option): You will need to register using an Eventbrite link that will be in the email. This allows us to know how many people we can expect in person. Thus, allowing us to make sure we maintain the indoor gathering limits imposed by the Governor, and also order enough food for all. For those that attend in person, we will still require sign in/sign out sheets and your CEUs will be submitted to national within 1 week of our event. It may take up to another 2 weeks for the CEUs to show in your ASPE Education log. The PITC does have guest protocols we will have to obey in order to meet there, so please follow all posted signage and procedures.

ASPE Pipeline

News for the Plumbing System Design Industry

<https://www.aspe.org/pipeline/>

IN THE KNOW

EMC 45TH ANNIVERSARY HISTORY BOOK NOW AVAILABLE FOR ORDER!

Available in time for the holidays. \$50 Each

Check or Credit Card Accepted

Pick up @ SES or during a Hybrid Chapter Meeting

FREE digital download on the ASPE EMC website.

TABLE TOP SPONSORSHIP PRICING

ASPE Members

- \$200.00 for the 1st table per meeting/per vendor
- \$150.00 for each additional table per meeting/per vendor

Non-Members

- \$250.00 for the 1st table per meeting/per vendor
- \$200.00 for each additional table meeting/per vendor

If a vendor purchases table tops for 3 meetings during the year, a 4th meeting table top will be provided for free.



A TOTAL, STATE-OF-THE-ART HOT WATER SYSTEM, ENGINEERED TO DELIVER A SUPERIOR LEVEL OF USER SAFETY, INFECTION CONTROL AND COMPLIANCE, FROM MECHANICAL ROOM TO THE POINT OF USE.

ARMADA
HOT WATER SYSTEM FOR HEALTHCARE

THE BRAIN®
DIGITAL RECIRCULATION VALVE
Digital hot water temperature control that delivers unparalleled accuracy, stability and safety to mitigate the risk of Legionella and scalding.

RADA DIGITAL FAUCET
Hands-free, programmable, point-of-use fixtures have The Brain® digital technology built in, and offers thermal disinfection, duty flush, bacterial-resistant design and ASSE 1070 compliance.

GAS-FIRED WATER HEATING
Leading-edge gas-fired institutional hot water generation, built for reliability, efficiency and durability.

SAGE® SMART HOT WATER SYSTEM MONITORING AND REPORTING
Advanced software provides regular updates, documentation, custom-filtered reports, and real-time alerts for compliance with industry guidelines and Standards of Care.

PROGRAMMABLE OPERATION AND FLOW CONTROL

SAGE® MONITORING

ABH

Merlo Energy
Chip.bidgare@merloenergy.com
(586) 256-9822

Armstrong

Bradley Commercial Washrooms. Brought to Life.
HANDWASHING & DRYING | ACCESSORIES | PARTITIONS | LOCKERS

CUTTING-EDGE HANDWASHING TAKES SHAPE

The next generation WashBar raises your restroom to new heights by providing touch-free soap, water and drying in an edgy new design for an unforgettable handwashing experience. The single connection point to the sink provides an impressive design element and creates more open space for cleaning.

ADVANTAGES OF THE WASHBAR

- Floating design for a simple and clean aesthetic
- Single connection point to the sink for easier cleaning
- Eliminates the cost and mess of paper towels
- Icons and LED lights to visually orient users
- Smart sensor technology eliminates false activations
- WashBar and bowl work together to keep water in the basin
- Gallon soap capacity to reduce the number of replacements
- Captures soap and water activations for maintenance planning

The new WashBar WB2 is available with the Verge® LVQ basin in Evero® natural quartz, OmniDeck® 5010 in Terreon® solid surface, or pair with a Terreon solid surface or Evero natural quartz undermount basin with the deck or countertop of your choice.

AVAILABLE IN SIX BEAUTIFUL FINISHES

Brushed Black Stainless	Brushed Bronze	Brushed Brass	Brushed Nickel	Brushed Stainless	Polished Chrome
-------------------------	----------------	---------------	----------------	-------------------	-----------------

ALL-IN-ONE WASHBAR

All the fundamentals of handwashing have been thoughtfully designed into Bradley's innovative WashBar.

WASHBAR FEATURES

- CLEAN**
 - Touch-free activation
 - Low level LED Indicator
 - Gallon (3.8 L) soap capacity
 - Simply replace soap tank – no cleaning or refilling
 - Liquid and foam soap
- RINSE**
 - Touch-free activation
 - 0.5 GPM (1.9 LPM)
 - Ultra-high efficient 0.35 GPM (1.4 LPM) option where water conservation is a necessity
- DRY**
 - Touch-free activation
 - Heated air stream dries hands quickly and efficiently
 - Adjustable speed for quieter hand drying

bradleycorp.com
800 BRADLEY | +262.251.6000
W42 N9101 Fountain Boulevard
Menomonee Falls, WI USA 53051
bradleycorp.com/washbar

Represented by New Century Sales:

WEST MICHIGAN Michael Zago D (248) 960-1147 x.107 C (616) 293-2121 E mikez@newcenturysales.com	WEST MICHIGAN Rod Cox D (248) 960-1147 x.116 C (616) 706-1481 E rodc@newcenturysales.com	EAST MICHIGAN Todd Hiller D (248) 960-1147 x.106 C (616) 633-2609 E toddh@newcenturysales.com	EAST MICHIGAN Ross Beck D (248) 960-1147 x.115 C (734) 673-2119 E rossb@newcenturysales.com
---	---	--	--

www.newcenturysales.com

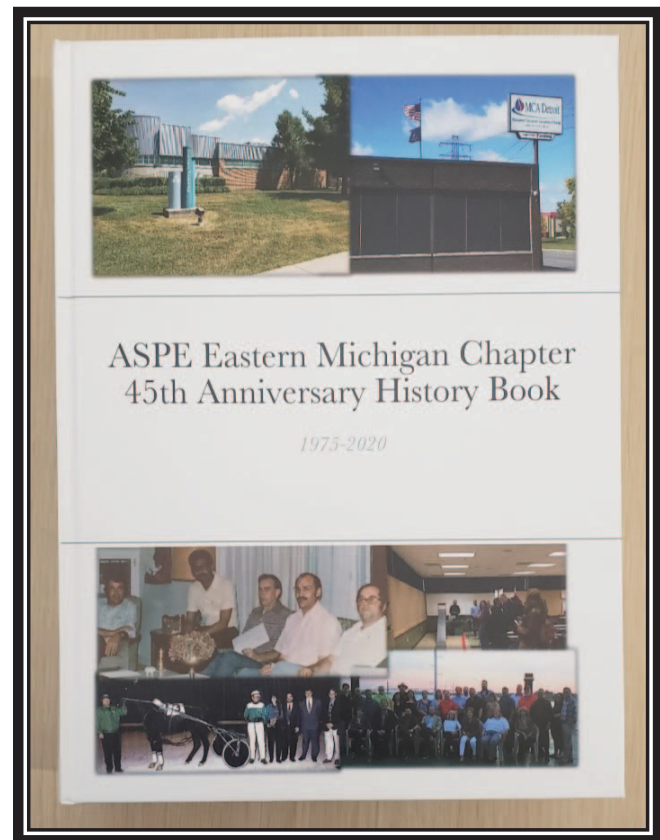
EMC 45TH ANNIVERSARY HISTORY BOOK IS AVAILABLE TO ORDER NOW!

Available in time for the holidays

\$50 EACH

**Check or Credit Card
Accepted**

**Pick-up @ SES or
during a Hybrid
Chapter Meeting**



Contact Theresa Card for orders:
vpt.aspe.emc@gmail.com or 248.988.4708



ASPE EASTERN MICHIGAN CHAPTER
WWW.ASPE.ORG/EASTERN-MICHIGAN

VP Technical Report

Theresa Card, P.E., CPD, LEED AP BD+C



Hello from your VP Tech!

Our Program year is off to a great start. I hope you are able to join us either in person, virtually or able to watch the recordings on YouTube! (see below).

Sponsor Appreciation

THANK YOU to our tabletop sponsors we have had this year. I apologize for not including September's sponsors in my last article (bad, VPT!).

September Tabletop Sponsors: **Balfrey & Johnston, JW Sales, Performance Engineering and VE Sales!**

October Tabletop Sponsors: **Performance Engineer and VE Sales!**

Remember to **support those who support the Chapter**. Without their generous sponsorship we would not be able to provide you the wide variety and exceptional quality of programs we have. THANK YOU, SPONSORS!

Past Meeting Recordings

If you have missed any of the meetings last program year you can email, and I will send you the link or you can look at past newsletters. Below you will find the link to this program year's recorded meetings. If you would like copies of the pdf handouts, please email me to let me know. I apologize, but no CEUs can be provided for watching meeting recordings. Please note you will likely have to copy the text below and paste into a browser to see the videos – as we have found some cannot click the links directly from the newsletter itself.

September 2021 Presentations Recordings: Right Sizing Plumbing: An Overview and Plumbing 101

- <https://youtu.be/B2jR9wO7JHM>

October 2021 Presentation Recording: Metered Flow vs Traditional Sizing and Utility Rebates Panel Discussion

- <https://youtu.be/mXpKw7UCrs>

Alan Deal's design class sessions on Right Sizing our plumbing systems have been very eye opening. I highly suggest you watch the recordings as I cannot do his knowledge justice. Performance Engineering has done a commendable job getting actual, installed metered flow for some multi-family buildings and this data really shows us how oversized our systems have become since Hunter's day.

The link for the IAPMO water use calculator can be found here for those that wish to see how this tool affects the typical way you size domestic water systems for residential and multi family use: <https://www.iapmo.org/water-demand-calculator/>

November Program

We hope you can join us for another great meeting in November, whether in person or virtually. See links below to register!

In person: <https://www.eventbrite.com/e/aspe-emc-november-2021-technical-program-tickets-194620494137>

Virtual: <https://education.aspe.org/products/eastern-michigan-chapter-meeting-right-sizing-water-heaters-submersible-pumps-types-and-applications-nov-2021>

I hope to see you all in November, but if I don't, please have a great Thanksgiving and enjoy some long-needed vacation and time with family; reconnecting to what is important in life.

Sincerely,

Theresa Card,
Vpt.aspe.emc@gmail.com

Engaging, retaining and advancing women in the industry.

Become Involved
Click here or go to:
<https://www.aspe.org/membership-global-community/membership/special-interest-groups/women-of-aspe/>

VP Legislative Report

William Grayzar, CPD



The 2018 Michigan Plumbing Code (MPC) Administrative Rules Part 7 filed on Tuesday, May 18, 2021 went into effect on Wednesday, September 15, 2021 and the 2018 Michigan Residential Code - Chapters 1 and 2; Administrative Rules Part 5 filed Friday, June 4, 2021 went into effect on Monday, October 4, 2021.

The 2018 Michigan Plumbing Code (MPC) is now available for purchase through the Code Study Development Group of Southeastern, Michigan (CSDGSM) along with other model codes. The CSDGSM code Order Form and contact information is included within this and every EMC-ASPE newsletter.

Other Rules currently open in MI include:

- 1) Part 9a - Michigan Mechanical Rules
- 2) Part 4 - Michigan Building Rules
- 3) Subdivision of Land Rules
- 4) Skilled Trades
- 5) Elevator
- 6) Part 10a - Michigan Energy Code
- 7) Part 10 - Michigan Uniform Plumbing Code

If you missed the 2021 ASPE Technical Symposium in San Diego, CA you missed a great event. It was great seeing friends and colleagues in person again. The product show and training session were great, I wish I could have attended more. The only downfall to the event was a day or two where we found out it does rain in southern California. If you like to keep up on the latest trends and trainings related to plumbing, now is the time to mark your calendars for the **2022 ASPE Convention & Expo**. This year the event will be in Indianapolis, in from September 16-21, 2022. This is sure to be another great event!



I look forward to seeing everyone on November 9th, 2021 at the Plumbing Industry Training Center.

Bill



New Century Sales, Inc.

Manufacturer's Representatives



COPPERPRESS® SYSTEM BENEFITS

- Size range from 1/2" to 4"
- Green visual application bands
- Consistent wall thickness on all products
- Leak before press systems
- Less equipment required
- Compatibility of fittings and tools

www.copperpress.com

Approvals & Certifications

- NFS ANSI/CAN 61
- UPC
- cUPC
- IPC
- IAPMO PS-117
- ICC-ES-PMG
- ASME B16.51



ISOTUBIUSA

Stainless Steel Press Solutions

<https://isotubi-usa.com>

Represented by New Century Sales:

WEST MICHIGAN

Michael Zago
C (616) 293-2121

E mikez@newcenturysales.com

WEST MICHIGAN

Rod Cox
C (616) 706-1481

E rodcd@newcenturysales.com

EAST MICHIGAN

Todd Hiler
C (513) 633-2609

E todhd@newcenturysales.com

EAST MICHIGAN

Ross Beck
C (734) 673-2119

E rossb@newcenturysales.com

www.newcenturysales.com

VP Membership Report

Kristin Simoneaux, P.E., CPD, LEED



Hi Everyone! Hope you are well. Just a reminder, our chapter is offering a free 1-year student membership to eligible students. In exchange for the free membership, we request the student give feedback on their experience (through either a short interview or writing their own newsletter article) within the first few months of their new

membership. If you know of a student that has been contemplating membership, please send them my way!

ASPE also offers scholarships to qualifying students up to \$3000! The deadline for entry is January 31st. Please check out the Alfred Steele scholarship at <https://www.aspe.org/membership-global-community/membership/alfred-steele-scholarship/> for more information and application.

Are you making the most of your membership? Not only are the amazingly awesome chapter meetings covered by your membership, but you also have access to more continuing education units (CEUs) through the ASPE education website using the Read, Learn, and Earn articles. Check them out at: <https://education.aspe.org/RLE>. Each month a new article is posted along with a 12-question quiz on the article. The articles are available for 12 months. After reading the article, take the quiz and once you pass you get 0.10 CEU on a certificate that logs into your ASPE “My Education” dashboard under “Transcript / Achievements”. This makes for easy CPD renewal and a nice collection location for any professionals in need of CEUs. The articles/quizzes are FREE to members and \$35 per article for non-members.

If you or someone you know is interested in becoming a member and taking advantage of the great things ASPE has to offer, please feel free to contact me. Until we meet again, stay healthy!

Kristin Simoneaux, P.E., CPD, LEED AP
Associate / Senior Mechanical Engineer
Direct: (248)336-4760
ksimoneaux@stantec.com

ASPE
Convention &
Expo 2022

Save
the
date!

09.16-21.22

INDIANAPOLIS





[calQlate Your Potential Energy Savings]

Booster system sizing can be difficult. That's why there's calQflo.

QuantumFlo's advanced innovation makes us the premier industrial manufacturing and distribution leader of intelligent pump system technology.

We offer the industry's revolutionary online booster system sizing software, calQflo, that selects the most efficient booster option for your needs—so that your system keeps pumping long into the future! With calQflo, you can:

- Compute the most **size-appropriate** system for your projects.
- **Save money** by selecting **energy-efficient** specs.
- Gain all of this information for **free!**



Get 20-50% Potential Energy Savings from Standard Sizing



Quality Water & Air, Inc.

Quality Water & Air, Inc.
 1402 Souter
 Troy, MI 48083
 Phone: 248-589-8010
 Email: qualitywaterair@cs.com
 Website: www.qualitywaterair.com
 Contact: Georgann - Chuck - Paul



Every Panel Meets UL508A with a 100KAIC (SCCR) Withstand Rating



32995 Industrial Road, Livonia, MI 48150
 Phone 734.266.5300 Fax 734.266.5310
 www.performanceengineering.com

intell^hhot™ Intelligent Hot Water Supply Boilers
 Endless Water. Zero Waste.

Heating Boilers
 Hot Water Supply
 Pool/Spa Heaters
 Storage Tanks
 Complete Parts Stock



High Efficiency Water Heaters
 High Efficiency Heating
 Boilers
 Custom System Solutions

Snowmelt Systems
 Radiant Floorheat Systems



Gas Fired Heat Pumps
 Heat Recovery Chillers



Natural Gas / Propane / Electric
3,000 to 4,000,000 BTU's
 - ALSO -
 Holby Thermostatic Mixing Valves



Jamie Caporosso: jamie@kerrpump.com
 12880 Cloverdale, Oak Park, MI 48237
 Ph.: (248) 543-3880 Fax: (248) 543-3236

Liquid Pumps
 Vacuum Pumps
 Heat Exchangers
 Blowers
 Related Equipment
 and Accessories

Sales • Service • Repair



AURORA FIRE PUMPS

Compact Fire Pump Systems

- UL Listed/FM Approved Aurora Fire Pump
- UL Listed/ FM Approved Fire Pump Controller
- Capacities of 50-750 Gpm.
- Pressures of 40-160 Psi.
- Aurora Model PVM (close coupled to an ODP motor.)

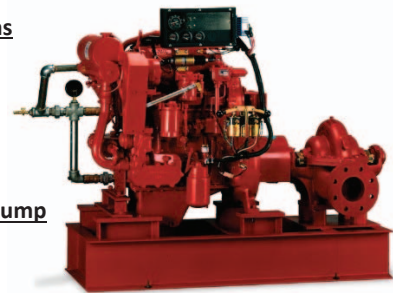
Vertical Split Case Electric Drive Fire Pump

- Electric Driven
- For Commercial, Industrial and Marine use only.
- UL Listed/ FM Approved/NFPA-20 Design

Horizontal Split Case Diesel Drive Fire Pump

- Diesel and Electric driven available.
- Flows at 250 gpm to 5000 gpm.
- Pressures available up to 490 Psi.

PLEASE INQUIRE TO KERR PUMP FOR PRICING,
 SELECTIONS, OR TESTING ON EXISTING.
 ALSO, PLEASE SEE www.aurorapump.com



Michigan's Oldest Supplier of Pumps and Process Equipment - 1905

MegaPress® G
Press safer.
Press
bigger.



Connected in quality.

Quick, safe connections on large diameter gas lines.

Viega MegaPress(R)G requires no open flames or added cost of fire watch, so projects are safer and more profitable. Installers can secure gas pipe up to 4" in 16 seconds or less, saving 60-90% on labor costs. That's why professionals choose MegaPressG - the trusted press connection method approved for gas lines ½" to 4".

Carl Petitt
 Technical Manager
 (614) 852-2691
 carl.petitt@viega.us

Michael Norgan
 District Sales Manager
 (989) 415-2431
 michael.norgan@viega.us

ALL-IN-ONE SCALD PROTECTION



420-T Series

Now there's no need to install a thermostatic mixing valve below the sink. The new 420-T Series combines Chicago Faucets durability with integrated scald protection. The result is a solid, easy-to-install restroom faucet that complies with ASSE 1070 requirements. With the 420-T, everything you need to meet current building codes and protect users against scalding is built right into the faucet.

Visit chicagofaucets.com or call your local representative for more information.

Taggart-Knight Group
 248/553-4388
 info@taggartknight.com



Geberit Group



R. L. Deppmann Company

Job Title: Sales Engineer

Reports To: Engineering Sales Manager

About Deppmann

Our Company focuses on helping people make better decisions. We are a company that is responsive to our customer and understands how our product work and interact in hydronic and plumbing systems. Our company culture is shaped by our Core Values: Knowledge, Empowerment, and Responsiveness. We achieve this through selling hydronic and plumbing equipment in Michigan and Ohio. Our Company is 100% employee owned.

Scope: Sales members utilize their technical knowledge of hydronic, steam and plumbing systems and sales experiences to help provide sales & support for the products represented by R.L. Deppmann. The Engineering Outside Salesperson focuses on the projects during the development and design phases, being a resource to our engineers in developing system designs and equipment selections.

Who We Are Looking For:

Looking for someone that enjoys collaborating with engineers and fellow team members to provide the best solution for any given project. The successful candidate enjoys teaching as well as learning. She/He will seek out opportunities to collaborate and loves to solve problems using her/his technical skills.

Responsibilities Include:

- **Selling – Pursuing the Order:**
 - Close the order at the engineer level (specifications and schedules)
 - Negotiate pricing
 - Coordinate quote
 - Manage vendors
 - Engineer/systems design
 - Internal collaboration/coordination
 - Follow-up on leads from Customer Service & Inside Sales
 - Respond to pricing requests
 - Joint sales with customers
 - Exceed sales goals for sales territory

- **Customer Management:**
 - Problem solving
 - Conduct training
 - Meet with customers: relationship building
 - On site tech support
 - Visit jobsites

March 2021



- **Internal Administrative Activities:**
 - Acquire product/industry/technical knowledge
 - Develop and analyze sales plan
 - Weekly teleconference call
 - Attend department offsite meeting
 - Utilize CRM to provide regular updates on projects & customers
 - Personal development
 - Backup Estimation

- **Marketing:**
 - Attend social events: golf outings, trade shows
 - Participate in professional organizations: i.e. ASHRAE, ASPE

- **Miscellaneous**
 - Commitment to Ongoing Personal Training / Development
 - Other duties may be assigned

Requirements:

Strong Computer Skills in Microsoft Office Suite, Technical background in HVAC (Degree Preferred), Ability to Multi-Task, Strong Desire to Learn, Take on responsibility, Great People Skills, Detail Oriented.

Travel:

Local travel required within Mid-Michigan & Traverse City, MI area territory, 10% travel outside of sales territory. A valid driver's license is required.

If you have these skills and the desire to join a driven team, send resume to Human Resources at jobs@deppmann.com

March 2021

OCTOBER MEETING

THANK YOU TO OUR ATTENDEES!

David Bailey
Theresa Card
Alan Deal
Vivian Enriquez
Dawn Fischhaber
Troy Foster
Robert Frey
Rachel Gendich
Rufina Golshteyn
William Grayzar
Brianne Hall
Norm Hall

Pam Hartsell
Dann Holmes
George Johnston II
Aaron Kilburg
Mike Kimmel
James King
Hank Koppelo
J. Laming
Peter Lapham
Jeremy Martin
Michael Melaragni
Kris Merritt

John Nametz
Joshua Pedraja
Gerald Potapa
Bill Sample
Sara Savoia
Emily Schwarzkopf
Aaron Sturos
Jim Yerke
Scott Young
Cindy Zatto



The National Fire Protection Association (NFPA) will conduct a one-day Keeping You Informed: Systems, Storage, Suppression, and More educational program on Tuesday, November 16 as part of the organization's year-long 125th Anniversary Conference Series. The all-day online event will feature a total of 10 educational sessions and industry roundtable discussions featuring subject matter experts and can be viewed on the scheduled date or via on-demand anytime for up to a year. Attendees will also benefit from networking opportunities, live chat sessions, sponsor demonstrations, and more.

[TO FIND OUT HOW TO ATTEND CLICK HERE](#)

OCTOBER MEETING PHOTOS



Good turn-out for in-person October meeting.



Sara Savoia Gives and Overview of Incentives from DTE

OCTOBER MEETING PHOTOS



Jim Yerke Presents the Pump Efficiency Index Incentive



Troy Foster Presents a Case Study Project

OCTOBER MEETING PHOTOS



John Nametz Presents Consumer's Energy's Incentives with a focus on Retro-commissioning



EMC President Pam Hartsell Presents Certificates of Appreciation



INDIANAPOLIS // SEPTEMBER 16-21

The **2022 ASPE Convention & Expo** is the only event tailored to plumbing system designers, engineers, specifiers and contractors.

Discover more than 350 global companies displaying the latest plumbing products, technologies and services

Attend 30+ educational sessions across five different tracks and earn CEUs just for walking the show floor

Connect with thousands of industry peers, make new business contacts, and have fun!

expo.aspe.org





Cindy Zatto

V.E. SALES COMPANY, INC.

For additional information on Aquatherm, Highland Tank, MIRO and Bonomi products, please call Cindy Zatto with V. E. Sales, Inc. at 810.343.2713 or email cindyz@vesalesinc.com



BONOMI
SINCE 1901

Put more than a century of excellence in valve design and production to work for your company

More than 100 years ago, the Bonomi family began designing and manufacturing valves in Italy with the same passion for excellence as the winemakers that were our first customers.

Today, our low-torque ball valves, in sizes 1/4" to 56", and precision electric and pneumatic actuators are still made in Italy in our own advanced production facilities. And though our single-part number valve and actuator packages make valve automation more simple than ever, our engineering support is available world wide.

Call Bonomi. We'll put our history of flow-control excellence to work for your future.



www.bonominorthamerica.com • (704) 412-9031



Stop Battling Volatile Prices and Corrosion

Pricing for steel mechanical piping systems is rising significantly. Lightweight, stably priced Aquatherm polypropylene-random (PP-R) piping is connected by quick, reliable heat fusion. Plus, PP-R doesn't rust, scale, or corrode and it has a 60-year projected lifespan and many other benefits.

aquatherm
we've got a pipe for that

Learn more at aquatherm.com



PROBLEM:

RPZ inside a building
= flood damage
= design engineer liability

SOLUTION:

Install the RPZ inside a freeze protected enclosure located outside the building.

Want to learn more?
Visit the engineering blog pages at www.safe-t-cover.com/blog

SAFE-T-COVER
BY HYDRODOWL

safe-t-cover.com 800-245-6333

PROUDLY MADE IN THE USA
WWW.MIROIND.COM

THE SIMPLE, SMART SOLUTION TO ROOFTOP SUPPORTS



- ✓ Industry-leading 20 year warranty
- ✓ Designed to protect roof membrane by keeping PSI below 2.0
- ✓ Supports come pre-assembled and ready to install
- ✓ Supports available for duct, pipe, mechanical units, and more, as well as stair crossovers, ramps, and service platforms
- ✓ Professional assistance through the process, from take-off to final installation

MIRO
INDUSTRIES, INC.
ROOFTOP SUPPORT PRODUCTS

HOW CAN WE SUPPORT YOU?

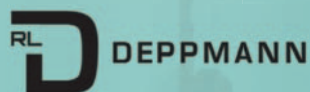
Replacing Your Water Heater Every Few Years is Not Our Business Plan



Conquest[®] condensing, gas-fired water heaters are constructed from AquaPLEX[®] duplex stainless steel so they're corrosion-resistant in potable water at any temperature. Available in 199-1000 MBH, Conquest provides even more BTUs in small spaces and fits through a standard 36-inch doorway. With a thermal efficiency of up to 96%, long product life and a 15-year tank and heat exchanger warranty, you can't afford not to have one.

Call R.L. Deppmann or visit our Monday Morning Minutes blog at deppmann.com for information on PVI Water Heaters

800.589.6120



800.784.8326 | pvi.com

Code Study and Development Group of Southeastern Michigan

Item No.	Description	Price Each*	Order Date
3200S18MI	2018 MI Plumbing Code	\$ 89.50	
3300S18MI	2018 MI Mechanical Code (Not Yet Available)	\$ 89.50	PO Number
3200S18	2018 IPC without Commentary	\$ 86.00	(If required)
3210S18	2018 IPC with Commentary	\$ 112.00	
3300S18	2018 IMC without Commentary	\$ 86.00	
3310S18	2018 IMC with Commentary	\$ 112.00	
3600S18	2018 IFCG without Commentary	\$ 86.00	
3610S18	2018 IFGC with Commentary	\$ 112.00	
3000S18	2018 International Building Code	\$ 130.00	
3000S15MI	2015 MI Building Code	\$ 139.00	
3100S15MI	2015 MI Residential Code	\$ 126.00	
3550S15MI	2015 MI Rehab for Existing Bldgs	\$ 90.00	
3800S15MI	2015 MI Energy Code	\$ 48.00	
3600S15	2015 IFGC without Commentary	\$ 84.00	
3310S15	2015 IMC with Commentary	\$ 109.00	
		\$ -	

- **Payment MUST accompany order / verify your preferred delivery method**
- **Credit cards, cash or company check accepted.**
- Dann Holmes - buildingwaterhealth@outlook.com or (248) 921-0582
- If orders are to be mailed, call Dann and you will be advised of additional freight charges.

• **Make check payable to: Code Study & Development Group of SE Michigan**

Mailing Address: **Will be given upon placement of order**

Item No.	Description	Quantity	Unit Price	Item Total	Status
				\$ -	
				\$ -	
				\$ -	
				\$ -	
				\$ -	
				\$ -	
				\$ -	
				\$ -	
				\$ -	
				\$ -	
Total books subject to incoming ICC Frgt charges		0			

	Client Information
Company	
Address	
City	
State	
Zip-Code	
	Contact Information
Attention	
E-Mail	
Phone	

	Order Details
Sub-Total	\$ -
ICC Frgt	\$ -
USPS Frgt	\$ -
MI Sales Tax	\$ -
Invoice Total	\$ -

Add \$5 per book
(Outgoing Frgt Charge)

Received By: _____

Check No. _____ or Cash _____ Date Paid _____
 Credit Card Approval No. _____

***Supersedes all pricing forms printed before October 19, 2021**

2021 Code Study Order Form



PLUMBING
TECHNICAL SERVICES

VALUE ENGINEERING: QUALITY NEVER GOES OUT OF STYLE

**Learn more about the benefits of
using a cast iron plumbing system.**

Don't Value-Engineer the Quality Out of Your System

Don't value-engineer the performance out of your next DWV plumbing project. Consider the true cost of installation when comparing piping solutions.

Reach out to your local Tech Services rep to schedule a time to go over the ASPE approved CEU Value-Engineering Considerations presentation.



McWanePlumbingTechServices.com/contact



EDUCATION



PUBLIC VENUES

COMMERCIAL OFFICES

T&S IS HERE >

T&S is proud to be a trusted name across a wide range of markets — staying at the forefront of today’s evolving industry and providing a vast selection of reliable solutions that meet required codes and compliances.

Learn more at tsbrass.com/markets.

Find us in



HEALTHCARE



T&S plumbing products represented in Eastern Michigan by: Diversified Spec Sales - 248-398-2400



KIMAX® Glass Drain and Vent Systems

- Low volatile organic compounds (VOCs)
- Will not burn or emit toxic fumes
- Maximum corrosion resistance
- Flexibility, adaptability, modularity
- Safe and simple installation
- Lowest life-cycle costs

Tro Sales Company
3406 West 12 Mile Road
Berkley, MI 48072
(248) 546-5354

SCHOTT North America, Inc
info.drainline@us.schott.com
www.us.schott.com/drainline



INTRODUCING THE FREEZELESS UNDERCOVER WALL HYDRANT™



- Model 68 freezeless wall hydrant protected by an integral cover
- Drains automatically—even with hose attached
- Replaceable 16 gauge stainless steel cover flips down for easy access
- Tee key prevents unauthorized use
- Sleek, streamlined, low profile design

WOODFORD



WOODFORD MANUFACTURING COMPANY

Excellence. *Always.*

800.621.6032 • www.woodfordmfg.com

Represented by **Burke Agency, Inc.** • 248.669.2800

Woodford Model 68



New Century Sales, Inc.
Manufacturer's Representatives

EAST MICHIGAN
1715 Traditional Dr.
Commerce Township, MI 48390
P [248] 960-1147 F [248] 960-1149

WEST MICHIGAN
550 36th St. SE
Grand Rapids, MI 49548
P [616] 600-9660

 www.americanstandard-us.com (Kitchen & Bathroom)	 www.amtrol.com (Expansion Tanks)	 www.bascoshowerdoor.com (Shower Doors)	 www.bradleycorp.com (Washroom Solutions)
 www.caleffi.com/usa/en-us (Hydronic Accessories)	 www.copperpress.com www.isotubi-usa.com (Plumbing Fittings)	 www.fiatproducts.com (Shower Floors)	 www.grohe.com/us (Faucets)
 www.justmfg.com (Stainless Steel Sinks)	 www.femyers.com (Water and Waste Pumps)	 www.oasisbath.com (Fiberglass & Acrylic Tub & Showers)	 www.oasiscoolers.com (Water Filtration Coolers)
 www.oatey.com (Cherne, Dbn Brass, Harvey & Hercules)	 https://na.panasonic.com/us/home-living-solutions/ventilation-indoor-air-quality/ (Bath Fans)	 www.rehau.com/us-en (PEX Plumbing Products)	 www.rheem.com (Water Heaters)



Represented by New Century Sales:

WEST MICHIGAN
Michael Zago
C [616] 293-2121
E mikez@newcenturysales.com

WEST MICHIGAN
Rod Cox
C [616] 706-1481
E rodc@newcenturysales.com

EAST MICHIGAN
Todd Hiler
C [513] 633-2609
E toddh@newcenturysales.com

EAST MICHIGAN
Ross Beck
C [734] 673-2119
E rossb@newcenturysales.com

www.newcenturysales.com

ASPE Mentoring Program

The Women of ASPE are excited to introduce ASPE's new Mentoring Program!

This program, which is available to all members of the Society, has been designed to connect ASPE members who have a particular skill set (mentor) with individuals (mentee) who are searching to acquire the same skills to develop and make progress toward their personal and professional goals.

Who Is a Mentor?

A mentor is someone who can help the mentee develop skills for success and long-range career planning, is able to be a good listener, is willing to share experiences and views, is willing to commit time and effort, provides an "open door" to questions and problems, points out both strengths and opportunities for improvement, and has a vested interest in the growth and development of their mentee.

Benefits to the mentor:

- Satisfaction in helping someone mature, progress, and achieve goals
- Meeting and sharing experiences with other mentors
- Personal ongoing support to help the mentee succeed
- Personal fulfillment through contribution to the Society and the individual

Who Is a Mentee?

Having a mentor can contribute to a successful and satisfying career. Without a mentor, that learning occurs mostly through trial and error. With a mentor, even experienced professionals can benefit from the experiences and expertise of someone who has withstood the trial and can help the mentee avoid the mistakes. Similarly, those new to the industry will discover that being a mentee shortens the learning curve for acquiring the skills and knowledge most critical to a fruitful career.

Benefits to the mentee:

- Discover new talents about yourself
- Career satisfaction
- Expand your personal network
- Maximize your strengths

aspe.org/aspe-mentoring-program



BALFREY & JOHNSTON, INC.

Manufacturers' Representatives
13050 Northend
Oak Park, MI 48237
Ph 313 864-2800 Fax 313 864-7219
George D. Johnston: george@balfrey-johnston.com
balfrey-johnston.com

J.W. SALES, INC.

Manufacturers' Representative
1570 E. Highwood
Pontiac, MI 48340
O: 248.745.8590 F: 248.745.0889
Michael Fedorinchik: mikef@jwsalesinc.net
Thomas Huck: thomash@jwsalesinc.net
Dave Sweany C: 616.540.469 daves@jwsalesinc.net
Jwsalesinc.net

BURKE AGENCY, INC.

Manufacturers' Representatives
2605 E. Oakley Park Road, Suite A,
Commerce Twp, MI 48390
Ph 248 669-2800 Fax 248 669-3310
Brian Burke, Peter Lapham, John Taylor
bburke@burkeagency.com
burkeagency.com

KERR PUMP AND SUPPLY

Manufacturers' Representatives
12880 Cloverdale
Oak Park, MI 48237
Ph 248 543-3880 Fax 248 543-3236
Jamie Caporosso: jamie@kerrpump.com
kerrpump.com

DALE PRENTICE COMPANY

Manufacturers' Representatives &
Application Engineering Solutions Provider
26511 Harding Avenue
Oak Park, MI 48237
Ph 800 536-4700 Fax 248 339-5559
Michael Cullen: mcullen@prenticeco.com
Mobile 248 302-5924
prenticeco.com

LOCHINVAR

High Efficiency Water Heaters and Boilers
45900 Port Street
Plymouth, MI 48170
Ph 734 454-4480 Fax 734 454-1790
Jason Loverich: jloverich@lochinvar.com
lochinvar.com

DAVE WATSON ASSOCIATES, INC.

Manufacturers' Representatives
1325 W. Beecher St.
Adrian, MI 49221
Ph 517 263-8988 Fax 517 263-2328
Rick Johnston: rjohnston@davewatson.biz
davewatson.biz

MAJOR/LOZUAWAY & ASSOCIATES, INC.

Manufacturers' Representatives
1117 W. Grand Blanc Rd.
Grand Blanc, MI 48439
Ph 810 234-1635 Fax 810 234-8389
Mike Ostrowski: moski@lozuaway.com
Mobile 810 287-6983
Bill Campbell, PE: bill@lozuaway.com
Mobile 810-287-0029

**DIVERSIFIED SPEC. SALES, INC./
HOWLEY AGENCY SALES CO.**

Manufacturers' Representative
13261 Northend Ave.
Oak Park, MI 48237-3265
Brendan Burdette: bburdette@dsshowley.com
Ph 248 398-2400 Fax 248 547-4905
diversifiedspec.com

NEW CENTURY SALES, INC.

Manufacturers' Representatives
1715 Traditional Dr.
Commerce Township, MI 48390
Ph 248 960-1147
Ross Beck: rossb@newcenturysales.com
Mobile (734) 673-2119
Todd Hiler: toddh@newcenturysales.com
Mobile 513 633-2609
newcenturysales.com

HS/BUY VAN ASSOCIATES, INC.

Manufacturers' Representatives
56 S. Squirrel
Auburn Hills, MI 48326
Jarrett Armstrong, Bill Allen
Ph 888 472-8982 Fax 248 852-0298
info@hsbuyvan.com
hsbuyvan.com

PAULA. BAKER

ASSE Region #4 Director - Mid West
ASSE International
18927 Hickory Creek Drive, Suite 220
Mokena, IL 60448
Ph 313 399-3072 Fax 248 585-1437
Paul Baker: paul.baker@ualocal98jatc.org
www.asse-plumbing.org

PERFORMANCE ENGINEERING GROUP

Engineered Water Products
32955 Industrial Rd.
Livonia, MI 48150

Alan Deal: adeal@performanceengineering.com
Ph 734 266-5300 Fax 734 266-5310
performanceengineering.com

R.L. DEPPMANN COMPANY

Manufacturers' Representatives
46575 Magellan Drive
Novi, MI 48377

Gerry Potapa Jr., CPD, Paul Prentice, LEED AP®
Mark Fine, LEED AP®, Chris Lieder
Ph 800 589-6120 Fax 248 354-3763
sales@deppmann.com
deppmann.com

PROGRESSIVE PLUMBING SUPPLY

Wholesale Distributor
31239 Mound Road
Warren, MI 48092

Ph 586 756-8662 Fax 586 756-9077
ppsupplyco.com

Locations: Warren, Detroit, Mt. Clemens, and Oxford

TAGGART-KNIGHT GROUP

Manufacturers' Representatives
37686 Enterprise Ct.
Farmington Hills, MI 48331

Gary O. Taggart
Ph 248 553-4388 Fax 248 553-4653
info@taggartco.com
taggartknight.com

QUALITY WATER & AIR, INC.

Manufacturers' Representative
1402 Souter
Troy, MI 48083

Georgann Kummer, WBE
Ph 248 589-8010 Fax 248 589-8016
qualitywaterair@cs.com
qualitywaterair.com

V. E. SALES COMPANY

V. E. Sales is your source for
the finest quality flow control solutions.
25200 Jefferson Ave.
St. Clair Shores, MI 48081

Thomas Van Egmond
Ph 586 774-7760 Fax 586 774-1490
vesalesinc.com



INCREASE
EXPAND
GROW
MULTIPLY

Place your ad here and expand your company!



ASPE EMC WILL BE HOLDING A HYBRID MEETING THIS MONTH



2021-2022 ASPE EMC Board

President

Pam Hartsell, CPD, PMP
Strategic Energy Solutions
4000 W. Eleven Mile Rd.
Berkley, MI 48072
(248) 399-1900 x 222
Fax: 399-1901
president.aspe.emc@gmail.com

VP Technical

Theresa Card, P.E., CPD,
LEED AP BD+C
Strategic Energy Solutions
4000 West 11 Mile Rd
Berkley, MI 48072
(248) 399-1900 ext 223
vpt.aspe.emc@gmail.com

VP Legislative

William Grayzar, CPD
28150 Greenfield Rd.
Southfield, MI 48076
(248)569-1430 ext.333
bill@dsonline.com

VP Membership

Kristin Simoneaux, P.E., CPD,
LEED AP
2338 Coolidge Hwy. #100
Berkley, MI 48072
(248) 336-4700
kristin.simoneaux@stantec.com

VP Education

Theresa Card, P.E., CPD,
LEED AP BD+C
Strategic Energy Solutions
4000 West 11 Mile Rd
Berkley, MI 48072
(248) 399-1900 ext 223
vpt.aspe.emc@gmail.com

Treasurer

Rachel Gendich
Strategic Energy Solutions
4000 W. Eleven Mile Rd.
Berkley, MI 48072
(248) 399-1900
Fax: 399-1901
treasurer.aspe.emc@gmail.com

Administrative Secretary

Brianne Hall, P.E., CPD,
LEED AP BD+C, GGP
FTC&H
39500 Mac Kenzie Dr. Suite 100
Novi, MI 48377
(248) 324-4780
bhall@fishbeck.com

Corresponding Secretary

George Johnston II
13050 Northend Ave
Oak Park, MI 48237
(313) 864-2800 Fax: 864-7219
george2@balfrey-johnston.com

Chaper Affiliate/Liaison

Dann Holmes
(248) 921-0582
r2al@aspe.org

AYP Liaison

George Bellman
Strategic Energy Solutions
4000 W. Eleven Mile Rd.
Berkley, MI 48072
(248) 399-1900 x222
Gbellman72@gmail.com

WOA Liaison

Theresa Card, P.E., CPD,
LEED AP BD+C
Strategic Energy Solutions
4000 West 11 Mile Rd
Berkley, MI 48072
(248) 399-1900 ext 223
allethe@gmail.com

Directors

Michael Melaragni, CPD
38958 Lapham Drive | Livonia, MI
48154-1014
(734) 591-9339
mjmelaragni@yahoo.com

Kari Rosteck
(313) 318-6555
kari.rosteck@gmail.com

John Nussbaum, IPP, FASSE,
FASPE
(248) 866-1400
jrnussbaum@comcast.net



SPONSOR ADVERTISING OPPORTUNITY INFORMATION

ASPE EMC News is published 9 times per year - September through May.

Yearly advertising for a Business Card ad, which also includes a full Line Card in our sponsors guide:
\$200.00 for members and \$250.00 for non-members.

Graphic Ads - Full Year (9 Issues): Quarter page - \$250.00 ○ Half page - \$350.00 ○ Full page - \$550.00

Checks should be made payable to ASPE EMC and mailed to: Rachel Gendich – Treasurer
c/o Strategic Energy Solution, 4000 W. Eleven Mile Rd., Berkley, MI 48072

Email all digital artwork to: Theresa Green, Newsletter Editor at: theresa.m.green@outlook.com

Circulation 260 - Distributed to: Engineers, Contractors, Inspectors, and other industry professionals in Michigan.

PAY FAST, PAY EASY
Secure Payments Accepted By

