

MAY MEETING AGENDA

DATE:

TUESDAY, MAY 12, 2020

WHERE:

This is a virtual online meeting due to the COVID 19 Stay-at-Home Order

12:00 PM - 1:30 PM

Water Filtration

Presenter: Mark Saunders (Pentair)

Please note: the price is free.

(If you are having trouble logging in for nonmembers who need to create an account: <https://education.aspe.org/moreinfo>) The time shown on the information page is in Central Time due to ASPE's admin settings. When you login and if you're in a different time zone it will adjust.

REGISTRATION REQUIRED

Registration link here <https://education.aspe.org/products/eastern-michigan-chapter-meeting-water-filtration-may-2020>

REGISTRATION FREE

SEE INSIDE COVER FOR TABLE OF CONTENTS

From Theresa Card, P.E., CPD, LEED AP BD+C, President of ASPE EMC



Hello from your EMC President-

I hope you are all well and holding up at home during this very unprecedented time. I also hope by the time this newsletter goes out that things have started to return back to 'normal.' I know we are all taking things day by day and week by week. Stay positive, obey the Governor's Stay Home orders, be kind to others and we will all get through this!

2020-2021 EMC BOARD:

Thank you to all the members who participated in the online voting for the 2020-2021 EMC Board! Your new board will be comprised of the following:

- President – Pam Hartsell
- VP Tech – Theresa Card
- VP Legislative – Bill Grayzar
- VP Education – Kristin Simoneaux
- VP Membership – Amanda Belcher
- Treasurer – Rachel Gendich
- Affiliate Liaison – Dann Holmes
- Administrative Secretary – Brianne Hall
- Corresponding Secretary - George Johnston II
- AYP Liaison – George Bellman
- WOA Liaison – Theresa Card
- Website & Newsletter Editor – Theresa Green
- Directors – Mike Melaragni, Kari Rosteck, John Nussbaum

Congratulations to the next board and a big THANK YOU to all our current board members: Kristin Simoneaux, Bill Grayzar, Brianne Hall, Frank Tistle, Pam Hartsell, Dann Holmes, Hank Koppelo, George Johnston II, George Bellman, Theresa Green, Mike Melaragni, Kari Rosteck and Amanda Belcher! Please thank a Board member the next time you see them. We are all volunteers that sincerely try to make this Chapter successful and to provide you, our members, with all the education and camaraderie you need.

Continued on page 2

Contents

| | |
|------------------------------------|---------|
| President's Report | 1 - 3 |
| Program | 3 |
| In The Know | 4 |
| VP Legislative Report | 6 |
| Affiliate Liaison Report | 7 |
| Jobs Board | 10 - 13 |
| Line Card Sponsors | 22 - 23 |

BOARD MEETING

Virtual Online Meeting 5/5/2020, 4:30 - 6:00 PM

MAY PROGRAM

Virtual Online Meeting 5/12/2020, 12:00 - 1:30 PM

ASPE 2020 CONVENTION

Sept. 11-16, 2020 in New Orleans, Louisiana (see pg. 9)

CPD AND CPDT EXAM AND REGISTRATION

See pg. 14 for scheduling dates.

ASPE IS ACCEPTING APPLICATIONS FOR THE ALFRED STEELE SCHOLARSHIP

Contact ASPE National for more information at (847) 296-0002, or email info@aspe.org

President's Report (cont. from page 1)

Theresa Card, P.E., CPD, LEED AP BD+C

MAY MEETING IS A GO:

We are excited to say we WILL be having a May meeting on Tuesday March 12th at Noon EDT. This will be a virtual meeting. The topic is 'Water Filtration' and a big THANK YOU to Frank Tistle and Pentair for stepping up to help provide us a great program to end the year. Check out the rest of the newsletter for more information.

We know a lot of people were excited for our original May program on the Hunter's Curve updates. Rest assured we plan to provide that same program in the 2020-2021 program year. So stay tuned and we hope to see you there!

SUMMER PLANNING MEETING:

As always, we will be having our summer planning meeting one Saturday in June to discuss the technical topics for next year's programs. We invite **anyone** interested to attend and participate. If you have ideas for either the design class or technical programs, please submit them to any board member or include them in your April or May program evaluation. The date for the summer planning meeting is TBD. An Eventbrite invitation will be sent out once we have a date and time selected. There will be an online attendance option in case anyone would like to attend but can't be there in person.

ASPE EMC JOBS PROGRAM:

We have a junior engineer looking for work! If your company is interested in knowing more simply email jobs.aspe.emc@gmail.com and we will tell you more about this applicant. We also have (2) jobs posted – check out the website and newsletter. All information sent to jobs.aspe.emc@gmail.com is completely confidential.

2020 CONVENTION IN NOLA:

As far as I know the Convention in New Orleans is still going to take place. When registration comes out, be sure to book your hotel fast! Information on the convention can be found here: <https://expo.aspe.org/>

If you plan to attend the Convention, please let a Board member know. We like to orchestrate a Chapter meet-up every time and order Chapter T-shirts for all members who will attend.

45TH ANNIVERSARY:

Our local Chapter's 45th anniversary will be this December! If you have old pictures or information from your time in the Chapter, please email me or any Board member! John Nussbaum has been working tirelessly during our Quarantine time to help put together a great History Book encompassing all 45 years of this Chapter's past. He has done a great job, but we will need help from YOU! Please look in your records/archives and see if you have any information or photos you can share with us to add into the History book. Thank you, John, for all your help!

Continued on page 3

President's Report (cont. from page 2)
 Theresa Card, P.E., CPD, LEED AP BD+C

PARTING THANK YOUS:

Thank you to all our Affiliates who make it possible for us to do what we do. I am very thankful that we have such great companies that support their local Chapter and make it possible for us to offer great programming at no charge to our members. So please, now and always – SUPPORT THOSE THAT SUPPORT THE CHAPTER.

Finally, thank you for allowing me to be your President for the past 2 years and represent this amazing Chapter. I hope to serve you well as VPT again and provide some stand out programs to draw large crowds and attract more members.

I hope you can join us in May and I wish everyone a fantastic summer!

Cheers,

Theresa Card, PE, CPD

allethe@gmail.com

MAY ONLINE PROGRAM

12:00 - 1:30 PM

TOPIC: Water Filtration



Mark Saunders

This presentation will include the following items:

- Why filtration is important
- Types of filtration
- Filter housings/enclosures
- Industrial Solutions

Presenter: **Mark Saunders** is a Technical Training Manger at Pentair Filtration Solutions. He has a Water Treatment Certificate from the WQA in Water Treatment Design. He has been with Pentair going on 2 years but has a history of training in automation with Rockwell Automation and Industrial Networking with Softing for over 20 years. He is based out of Pentair in the Milwaukee area but lives in the DFW metroplex in Texas.



OASIS QUASAR™
UVC-LED WATER TREATMENT.
Exclusively through OASIS
Model Code:
 • PWEBQ

Features:


- **Pathogen Control:** UVC-LEDs disinfect the water when it is being dispensed, eliminating the chance of recontamination and reducing 99.99% of pathogens.
- **Pathogen Inactivation:** Effective against a wide range of water-borne pathogens, including Legionella and chlorine resistant micro-organisms such as Cryptosporidium and Giardia.
- **Chemical Free:** UVC-LEDs provide physical treatment of water without the use of harmful chemicals or altering taste.
- **Mercury Free:** Conventional UV lamps contain mercury, a hazardous material which requires special disposal. UVC-LEDs are mercury-free.
- **Freshield:** Alcovac plastic is manufactured with our exclusive silver-based antimicrobial compound to prevent degradation and deterioration caused by bacterial growth.
- **Extremely Low Power:** UVC-LEDs do not transfer heat to the treated water.
- **Constant Protection:** UVC-LEDs pulse on every 10 minutes for a short duration to keep the dispense point sanitized between dispenses.
- **Fail Safe:** Prevents water from dispensing if the QUASAR unit becomes disconnected or fails.
- **Long Life:** Will last three years or more because UVC-LEDs are only on during water dispense or standby mode constant protection.

UVC-LED Treatment right at the point-of-dispense

Represented by New Century Sales:

| WEST MICHIGAN | WEST MICHIGAN | EAST MICHIGAN | EAST MICHIGAN |
|-----------------------------|-----------------------------|-----------------------------|-----------------------------|
| Michael Zago | Rod Cox | Todd Hiller | Ross Beck |
| D (248) 960-1147 x 107 | D (248) 960-1147 x 116 | D (248) 960-1147 x 106 | D (248) 960-1147 x 115 |
| C (616) 293-2121 | C (616) 706-1481 | C (616) 633-2609 | C (734) 673-2119 |
| E mikez@newcenturysales.com | E rodco@newcenturysales.com | E toddh@newcenturysales.com | E rossb@newcenturysales.com |

www.newcenturysales.com



Biweekly Source for News and Events in the Plumbing Engineering Industry

**AS AN ASPE MEMBER YOU CAN
 RECEIVE THE PIPELINE
 PUBLICATION - ACCESS
 ARCHIVE EDITIONS AT**

<http://aspe.org/Pipeline>

IN THE KNOW

NEW CODE BOOK ORDER FORM

Please use the most current book order form from the Code Study & Development Group found in this newsletter. Contact Mr. Dann Holmes with questions at dholmes@nsf.org or (734) 214-6222

TABLE TOP SPONSORSHIP PRICING

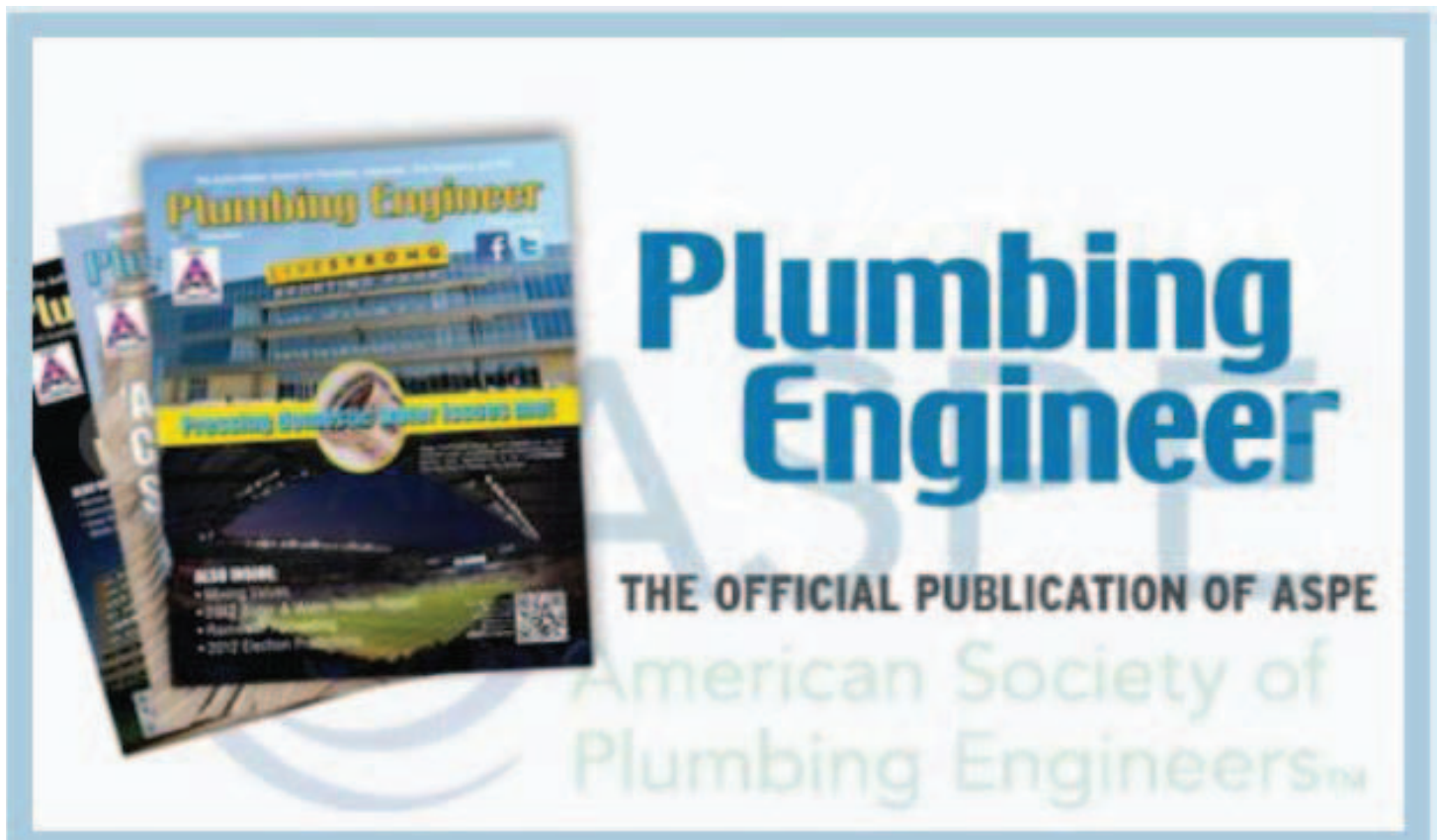
ASPE Members

- \$200.00 for the 1st table per meeting/per vendor
- \$150.00 for each additional table per meeting/per vendor

Non-Members

- \$250.00 for the 1st table per meeting/per vendor
- \$200.00 for each additional table meeting/per vendor

If a vendor purchases table tops for 3 meetings during the year, a 4th meeting table top will be provided for free.





Cindy Zatto

V.E. SALES COMPANY, INC.

For additional information on Aquatherm, Highland Tank, MIRO and Bonomi products, please call Cindy Zatto with V. E. Sales, Inc. at 810.343.2713 or email cindyz@vesalesinc.com



BONOMI
SINCE 1901

Put more than a century of excellence in valve design and production to work for your company

More than 100 years ago, the Bonomi family began designing and manufacturing valves in Italy with the same passion for excellence as the winemakers that were our first customers.

Today, our low-torque ball valves, in sizes 1/4" to 56", and precision electric and pneumatic actuators are still made in Italy in our own advanced production facilities. And though our single-part number valve and actuator packages make valve automation more simple than ever, our engineering support is available world wide.

Call Bonomi. We'll put our history of flow-control excellence to work for your future.

www.bonominorthamerica.com • (704) 412-9031




Stop Battling Volatile Prices and Corrosion

Pricing for steel mechanical piping systems is rising significantly. Lightweight, stably priced Aquatherm polypropylene-random (PP-R) piping is connected by quick, reliable heat fusion. Plus, PP-R doesn't rust, scale, or corrode and it has a 60-year projected lifespan and many other benefits.

aquatherm
we've got a pipe for that

Learn more at aquatherm.com



PROBLEM:

RPZ inside a building
= flood damage
= design engineer liability

SOLUTION:

Install the RPZ inside a freeze protected enclosure located outside the building.

Want to learn more?
Visit the engineering blog pages at www.safe-t-cover.com/blog



SAFE-T-COVER
BY HYDROCOWL

safe-t-cover.com 800-245-6333

PROUDLY MADE IN THE USA
WWW.MIROIND.COM

THE SIMPLE, SMART SOLUTION TO ROOFTOP SUPPORTS



- ✓ Industry-leading 20 year warranty
- ✓ Designed to protect roof membrane by keeping PSI below 2.0
- ✓ Supports come pre-assembled and ready to install
- ✓ Supports available for duct, pipe, mechanical units, and more, as well as stair crossovers, ramps, and service platforms
- ✓ Professional assistance through the process, from take-off to final installation

MIRO
INDUSTRIES, INC.
ROOFTOP SUPPORT PRODUCTS

HOW CAN WE SUPPORT YOU?

VP Legislative Report

William Grayzar, CPD



I hope this newsletter finds you staying safe and healthy during the Coronavirus “Stay at Home” and “Social Distancing” orders. We all are hoping that this will be over soon and we can get back to our regular daily activities and we can once again enjoy the company of our friends and co-workers. I know I miss meeting with my fellow EMC-ASPE members in person.

Since the first of the year, the National Society Legislative Committee has been busy. The following is a brief review of just some of the recent items in which the National Legislative Committee has been involved:

In late February, the V.P. Legislative for the National Society (our own Ms. Brienne Hall) drafted a position statement developed in response to remarks on the current water efficiency standards on restroom fixtures by President Trump. The position statement opposed further decreases in restroom fixture flow rates below U.S. WaterSense requirements until such time as sufficient data can be provided indicating that this will not have negative effects on public safety and the performance of the plumbing system as a whole. The Legislative Committee was in favor of supporting the position statement.

On March 10th, The North Carolina Building Code commission passed an amendment overturning their code language restricting the use of PVC pipe and fitting in high rise buildings, in which the top occupied floor exceeds 75 feet (23m) in height. ASPE’s Legislative committee was asked to review a letter drafted in opposition of the change and consider providing support to the position. This item is still under review by the Legislative Committee.

In mid March, the Nation Society of ASPE had been asked to participate in a coalition currently consisting of The Vinyl Institute, Plastic Pipe Institute, Plastic Pipe & Fittings Association, Plastics Industry Association and American Chemistry Council. The intent of the coalition was to oppose California Bill AB 3015, which basically would prohibit the use of plastic DWV piping in public buildings in the state. The request of the coalition was for ASPE to join as a partner in submitting a letter in opposition to the California Bill. This item is still under review by the Legislative Committee.

In late March, ASPE had been requested to provide support along with several organizations for a proposal by "the Department of Housing and Urban Development's (HUD) to recognize the 2009 ICC A117.1 Accessible and Usable Buildings and Facilities standard (2009 ICC A117.1), 2009 International Building Code (IBC), 2012 IBC, 2015 IBC, and 2018 IBC as safe harbors for compliance with the Fair Housing Act’s (FHA) accessibility requirements. The Legislative Committee was in favor of updating the code language to reference the more recent codes.

Above are just some of the items the National Society has been addressing and that I have been involved with on behalf of the Eastern Michigan Chapter. I would like to thank you for allowing me to serve as the V.P. Legislative for EMC-ASPE and to represent the chapter at the National Society level.

I look forward to seeing everyone soon, in the meantime I hope you are, and remain, healthy and well.

Bill

Women of ASPE Leadership Forum



The Women of ASPE (WOA) Leadership Forum will be an invaluable learning and networking experience at the 2020 ASPE Convention & Expo. This exclusive event will bring together women in the field of plumbing design who have the opportunity to network with peers, gain knowledge and walk away with actionable insights that can be applied toward professional growth. CEUs are available for participating. Pre-registration is required. Updates will be posted in May.

Affiliate Liaison Report

Dann Holmes, ASPE Region 2



Returning to Work After CoVID-19? Beware!

The Chinese Wuhan virus (aka CoVID-19) has disrupted our lives more than anyone could have dreamt. Most of us feel like we've been sleeping through a nightmare while awake. As we gain reliable data and insight into this virus, we're beginning to look forward to

getting our lives back to normal; let's call it "our new normal". Those of us that enjoy working or need to work to support our loved ones will be returning to our place of employment soon. We'll catch up with our coworkers, exchange happy and sad stories on what we had to do during our stay-home mandate.

What about the water that has been sitting in the pipes in our building and those of our clients while we've been confined to our homes? Over the past years we've done our best to install low-flow fixtures wherever and whenever we could. This was noble, it seemed to be the right thing to do. We were "saving water". But whom could have imagined a pandemic like the Wuhan virus and the unintended consequences related to our building water systems? Has anyone addressed this in the emergency response section of their water management plan? I'm guessing not.

A building that has been closed for an extended period or has had limited access is most at risk to the people returning to that facility. Reduction in building water usage creates hazardous conditions ripe for bacteria growth, other pathogens and corrosion concerns.

Plumbing systems and associated equipment like cooling towers, pools, decorative fountains, hot tubs, ice machines, drinking fountains, bottle fillers, and kitchen equipment are just a few of the locations you must pay attention to. Going around the building and flushing a few fixtures will not minimize problems that lurk in these pipes. There is a sequence to flushing that should be executed correctly and it starts with a full understanding of the building water system and the risks associated at every change of direction and usage.

If there hasn't been a continuous call for water at a level that the building was designed for, then there is an increased risk that the floor drains and trench drains may have dried out. This could lead to sewer gases entering the built environment.

Water sitting in pipes also gives way to leaching of chemicals like lead. LEAD? We haven't added lead to building plumbing systems since 2014! Maybe so, but how many buildings do you know of in your local area that were designed and built before 2014? Unless you're in a brand-new city, then the answer is most all of them.

Here is more to think about. If your building is near a residential community, then chances are the municipal water lines feeding that area have seen higher than normal demand. Not bad. But what if your facility is in a commercial/industrial park and the entire area has been vacant for 1-2 months. That entire area has not had a call for water. When the demand ramps up, then the biofilm and sediment that has accumulated in those lines will be stirred up and make their way into your building too. You should consider coordinating with your municipality to flush the fire hydrants before you begin to bring your building back online!

The industry is gathering plenty of data on the dilemmas poised by this pandemic and guidelines are being written to address these problems. The CDC and the Washington State Department of Health have created good reference material. I know AWWA, ASPE and NSF are working together to push out more information. ASHRAE is putting a task force together to develop an HVAC response to buildings with low occupancy or buildings that are unoccupied.

Lessons learned during CoVID-19 will be referenced by plumbing and mechanical engineers forever. In the meantime, contact me and I can send you a nice 1-page printable PDF to post for quick reference on this topic.

Dann Holmes – ASPE Region 2 Affiliate Liaison
NSF International – r2al@aspe.org



ASPE YOUNG PROFESSIONALS

Hey Young Professionals!

Learn more about our group!



ASPE Young Professionals (AYP) is dedicated to the needs of plumbing engineers and designers 35 years old and younger. Your local ASPE Chapters have been busy organizing exciting opportunities designed to help you excel in your career, including:

- » Partnerships with other associations
- » Social and networking events
- » Educational offerings
- » Mentoring programs
- » And more!



To learn more about the ASPE Young Professionals special-interest group, email ayp@aspe.org and visit aspe.org/ayp.

Exclusive AYP Sponsor





The American Society of Plumbing Engineers (ASPE) Convention & Expo

The 2020 ASPE Convention & Expo is dedicated to quality education, connections and experiences for those skilled in the design, specification and inspection of plumbing systems.

2020 ASPE Convention & Expo
September 11-16
Ernest N. Morial Convention Center | New Orleans, Louisiana

Save the Date

Viega System Solutions

Multiple materials, many solutions
One provider



For more information, contact:

Carl Petitt, Jr.
Technical Manager - Great Lakes
carl.petitt@viega.us
(614) 852-2691

Michael Norgan
District Sales Manager
michael.norgan@viega.us
(989) 415-2431



www.viega.us



"A Relentless Commitment to Excellence"

INSTALLATION, SERVICE & MAINTENANCE SINCE 1970

Project Manager (PM)

Job Competencies and Description

Department: Construction Department

Reports to: Vice President

Supervisory Responsibility:

This position manages field technicians and is responsible for the performance management and accountability of these employees.

Positional Overview:

The Project Manager will plan, execute and finalize projects according to strict deadlines and within budget. This includes acquiring resources and coordinating the efforts of team members and third-party contractors in order to deliver projects according to plan. The Project Manager will also define the project's objectives and oversee quality control throughout its life cycle.

Qualifications:

Required Education and Experience:

1. Associates/Bachelor's degree in a technical discipline, or business management is preferred.
2. 1-2 years of experience in managing or leading the work of others.

Preferred Education and Experience:

1. Five years relevant work experience with an architecture, engineering or construction firm required.
2. Industry Certifications

Competencies:

1. Communication Proficiency
2. Customer/Client Focus
3. Leadership
4. Organizational Skills
5. Performance Management
6. Problem Solving/Analysis
7. Technical Capacity

Additional Eligibility Qualifications:

1. Experience working independently and, in a team-oriented collaborative environment.
2. Can conform to shifting priorities, demands and timelines through analytical and problem-solving.
3. Strong interpersonal skills and communication skills to effectively interface and gain cooperation with all levels of company structure, including outside vendors and General Contractors.
4. Proficient in Microsoft Office (Word & Excel), clearly written proposals, detailed estimating templates for bids and change orders; familiar with project scheduling software.
5. Ability to effectively prioritize and execute tasks in a high-pressure environment is crucial.

Project Manager (PM) – v. 11/1/19

6250 NINETEEN MILE ROAD • STERLING HEIGHTS • MI • 48314 • OFFICE: 586.737.9900 • FAX: 586.737.9901



"A Relentless Commitment to Excellence"

INSTALLATION, SERVICE & MAINTENANCE SINCE 1970

Essential Functions:

1. Direct and manage project development from start to finish.
2. Define project scope, goals and deliverables that support business goals in collaboration with senior management and stakeholders.
3. Ensure project cut sheets, drawings, RFI's and all pre-construction documents are timely submitted.
4. Effectively communicate project expectations to team members and stakeholders in a timely fashion.
5. Estimate the resources and participants needed to achieve project goals.
6. Draft and submit budget proposals and recommend subsequent budget changes where necessary.
7. Determine and assess need for additional staff and make the appropriate recruitments as necessary.
8. Delegate tasks and responsibilities to appropriate personnel.
9. Identify and resolve issues and conflicts within the project team.
10. Plan and schedule project timelines and milestones and interpret various scheduling charts and software.
11. Track project milestones and deliverables; ensure long lead equipment is released timely.
12. Prepare status/progress reports and analyze results – troubleshoot problem areas.
13. Proactively manage changes in project scope, identify potential crises and devise contingency plans.
14. Coach, mentor, motivate and supervise project team members and contractors.
15. Build, develop and grow business relationships vital to success of the project.
16. Conduct project post-mortems and create recommendations report to identify successful and unsuccessful project elements.

Work Environment:

- This position operates in both an office and field setting. This role routinely uses standard office equipment, Microsoft Software and data management software.

Position Type and Expected Hours of Work:

1. This is a full-time (40-50 hour/week) position.
2. The Project Manager is expected to work during all normal business hours, Monday - Friday, 7:00 a.m. to 5:00 p.m., with additional on-call shifts required.
3. Occasional evening and weekend work may be required as job duties demand.

Travel:

- Project Managers are expected to travel to all jobs.

Professional Development Expectations:

- Update job knowledge by participating in educational opportunities, reading professional publications, maintaining personal networks, and participating in professional organizations.

Interested??

Email John Johnson, Vice President
[@jjohnson@macombmechanical.com](mailto:jjohnson@macombmechanical.com)

Project Manager (PM) – v. 11/1/19

6250 NINETEEN MILE ROAD • STERLING HEIGHTS • MI • 48314 • OFFICE: 586.737.9900 • FAX: 586.737.9901



Plumbing Designer

GMB is currently seeking a full time, direct hire Plumbing Designer for our Royal Oak Office. The Plumbing Designer is responsible for leading GMB's design teams in the design of domestic plumbing systems.

What it is like to work here:

We're unique. Sure, every firm says that, but we *know* what makes us unique. We constantly develop well-rounded professionals who become the best at what they do. Our Team of Teams approach provides a linkage between all employees that gives us the ability to think and act as a unit and as we grow allow new employees to be successful at a rapid pace.

At our core we deeply value talent development and opportunities for growth. We continue to build a culture of empowering our employees, giving them opportunities to be the best they can be within a variety of communities, both internal and external, so that we all learn, grow, and give. Whether you come join us in our Michigan offices of Holland, Grand Rapids and Royal Oak or Indianapolis, Indiana, your opportunities are as limitless as your imagination. Come be a part of designing the future.

What you will get to do:

- Utilize your expertise to support GMB with the design of complex plumbing systems.
- Prepare construction documents using Revit.
- Design domestic water, storm water, sanitary drain, waste and vent systems, fuel systems, medical gas systems, and laboratory gas systems.
- Prepare documents and calculations for the LEED certification process.
- Coordinate design efforts working closely with our project teams, clients, and building owners.
- Produce one-line diagrams/schematics, hydraulic calculations of plumbing systems, and calculations in the sizing of plumbing systems and equipment selection.
- Ensure that all drawings are prepared with accuracy, neatness and speed.
- Communicate with team members, other disciplines and outside vendors to obtain necessary information for designs and drawings.
- Assist the design team in the process of assembling organized sets of drawings.
- May assist in data collection and/or field verification, and work in conjunction with our teams of engineers to help develop all aspects of a project.

What are some of the requirements to work for us?

- 5+ years of plumbing design experience.
- Prior experience implementing designs through construction.
- Demonstrated ability to create 3D models, focusing on Plumbing but with the ability to coordinate with all disciplines.
- Ability to manage design of multiple projects/deadlines simultaneously.
- Must possess a technical knowledge base with desire to learn, lead, and grow.
- Must be able and willing to travel locally for field work at client sites.



What might set you apart from other candidates?

- Associates or Bachelor's degree in Plumbing Design / Engineering (or degree related to HVAC Design or Mechanical Engineering) is preferred.
- Proven ability to prioritize effectively, have good follow-through, and practice self-implemented quality control measures.
- CPD certification is a plus.
- Ability to design automatic fire suppression systems.
- Plumbing design experience in A/E firm preferred.
- Proficiency with Autodesk Revit.
- A passion for plumbing design.

This is a direct, full time, permanent position. Salary will be commensurate with experience, including an excellent benefit package. Must have current and continuing right to work in the United States without sponsorship. All qualified applicants will receive consideration for employment without regard to race, color, religion, sex, age, sexual orientation, gender identity or national origin.

**If you are interested, please reach out to:
Rose Wagner
GMB
rosew@gmb.com
616.796.0200**



CPDT - 2020 EXAM DATES:

October 5 - 11, 2020

For more info go to: <https://www.aspe.org/education-credentialing/cpdt/>

CPD - 2020 EXAM DATES: This year's scheduled CPD Exam has been postponed due to the rapidly changing situation surrounding the COVID19 pandemic. The original exam dates were March 30 – April 5, 2020. With many cities and states issuing school and business closures, it is in our best interest to postpone the examination until later this year. **The revised dates are June 15 – 21, 2020.** Click here for more information

Go to the national [ASPE website](#) for more information

ALL-IN-ONE SCALD PROTECTION



Certified!



420-T Series

Now there's no need to install a thermostatic mixing valve below the sink.

The new 420-T Series combines Chicago Faucets durability with integrated scald protection. The result is a solid, easy-to-install restroom faucet that complies with ASSE 1070 requirements. With the 420-T, everything you need to meet current building codes and protect users against scalding is built right into the faucet.

Visit chicagofaucets.com or call your local representative for more information.

Taggart-Knight Group

248/553-4388

info@taggartknight.com

**CHICAGO
FAUCETS**

Geberit Group



High Efficiency Water Heaters
High Efficiency Heating Boilers
Custom System Solutions
Storage Tanks

Heating Boilers
Hot Water Supply
Pool/Spa Heaters
Storage Tanks
Complete Parts Stock



Snowmelt Systems
Radiant Floorheat Systems



Residential Water Heaters
Commercial Water Heaters
Storage Tanks
Complete Parts Stock

Natural Gas / Propane / Electric / Oil
3,000 to 4,000,000 BTU's

- ALSO -

Aldrich Boilers / Holby Valves / Valley Water Softeners



Jamie Caporosso: jamie@kerrpump.com
12880 Cloverdale, Oak Park, MI 48237
Ph.: (248) 543-3880 Fax: (248) 543-3236

Liquid Pumps
Vacuum Pumps
Heat Exchangers
Blowers
Related Equipment
and Accessories

Sales • Service • Repair



AURORA FIRE PUMPS

Compact Fire Pump Systems

- UL Listed/FM Approved Aurora Fire Pump
- UL Listed/ FM Approved Fire Pump Controller
- Capacities of 50-750 Gpm.
- Pressures of 40-160 Psi.
- Aurora Model PVM (close coupled to an ODP motor.)

Vertical Split Case Electric Drive Fire Pump

- Electric Driven
- For Commercial, Industrial and Marine use only.
- UL Listed/ FM Approved/NFPA-20 Design

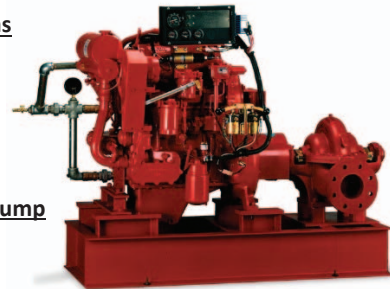
Horizontal Split Case Diesel Drive Fire Pump

- Diesel and Electric driven available.
- Flows at 250 gpm to 5000 gpm.
- Pressures available up to 490 Psi.

PLEASE INQUIRE TO KERR PUMP FOR PRICING,
SELECTIONS, OR TESTING ON EXISTING.

ALSO, PLEASE SEE www.aurorapump.com

Michigan's Oldest Supplier of Pumps and Process Equipment - 1905





THE BEST OFFENSE IS A GOOD DEFENSE.



Defend against the test of time and use cast iron soil pipe. Ensure success by knowing when and where to specify cast iron soil pipe. Did you know you can earn CEU's by taking a foundry tour to see how cast iron pipe is made or attend a local lunch and learn? Contact your local technical services manager today.



LEARN MORE:
mcwaneplumbingtechservices.com



KIMAX® Glass Drain and Vent Systems



- Low volatile organic compounds (VOCs)
- Will not burn or emit toxic fumes
- Maximum corrosion resistance
- Flexibility, adaptability, modularity
- Safe and simple installation
- Lowest life-cycle costs

Tro Sales Company
 3406 West 12 Mile Road
 Berkley, MI 48072
 (248) 546-5354

SCHOTT North America, Inc
 info.drainline@us.schott.com
 www.us.schott.com/drainline



EDUCATION



PUBLIC VENUES

COMMERCIAL OFFICES

T&S IS HERE >

T&S is proud to be a trusted name across a wide range of markets — staying at the forefront of today's evolving industry and providing a vast selection of reliable solutions that meet required codes and compliances.

Learn more at tsbrass.com/markets.



HEALTHCARE



Find us in



T&S plumbing products represented in Eastern Michigan by: Diversified Spec Sales - 248-398-2400



[calQlate Your Potential Energy Savings]

Booster system sizing can be difficult. That's why there's calQflo.

QuantumFlo's advanced innovation makes us the premier industrial manufacturing and distribution leader of intelligent pump system technology.

We offer the industry's revolutionary online booster system sizing software, calQflo, that selects the most efficient booster option for your needs—so that your system keeps pumping long into the future! With calQflo, you can:

- Compute the most **size-appropriate** system for your projects.
- **Save money** by selecting **energy-efficient** specs.
- Gain all of this information for **free!**



Get 20-50% Potential Energy Savings from Standard Sizing



Quality Water & Air, Inc.

Quality Water & Air, Inc.
 1402 Souter
 Troy, MI 48083
 Phone: 248-589-8010
 Email: qualitywaterair@cs.com
 Website: www.qualitywaterair.com
 Contact: Georgann - Chuck - Paul



Every Panel Meets UL508A with a 100KAIC (SCCR) Withstand Rating

NEW CENTURY SALES, INC.

MANUFACTURERS REPRESENTATIVES

MB&A
MEEK | BECK & ASSOCIATES INC.




www.americanstandard-us.com
(Kitchen & Bathroom)



www.amtrol.com
(Expansion Tanks)



www.anaheimmfg.com
(Garbage Disposals)



www.bascoshowerdoor.com
(Shower Doors)



www.bradleycorp.com
(Washroom Solutions)



www.caleffi.com
(Hydronic Accessories)



www.fiatproducts.com
(Shower Floors)




www.grohe.com/us
(Faucets)



www.usa.ibcboiler.com
(Boilers)



www.justmfg.com
(Stainless Steel Sinks)



www.femyers.com
(Water and Waste Pumps)



www.oasisbath.com
(Fiberglass & Acrylic Tub & Showers)



www.oasiscoolers.com
(Water Filtration Coolers)




www.oatey.com
(Cherne, Dbn Brass, Harvey & Hercules)



<https://na.panasonic.com/us/home-living-solutions/ventilation-indoor-air-quality/>
(Bath Fans)



www.rehau.com/us-en
(PEX Plumbing Products)



www.rheem.com
(Water Heaters)



Represented by New Century Sales:

| | | | |
|--|---|--|---|
| <p>WEST MICHIGAN Michael Zago C (616) 293-2121 E mikez@newcenturysales.com</p> | <p>WEST MICHIGAN Rod Cox C (616) 706-1481 E rodc@newcenturysales.com</p> | <p>EAST MICHIGAN Todd Hiler C (513) 633-2609 E toddh@newcenturysales.com</p> | <p>EAST MICHIGAN Ross Beck C (734) 673-2119 E rossb@newcenturysales.com</p> |
|--|---|--|---|

www.newcenturysales.com

ASPE Mentoring Program

The Women of ASPE are excited to introduce ASPE's new Mentoring Program!

This program, which is available to all members of the Society, has been designed to connect ASPE members who have a particular skill set (mentor) with individuals (mentee) who are searching to acquire the same skills to develop and make progress toward their personal and professional goals.

Who Is a Mentor?

A mentor is someone who can help the mentee develop skills for success and long-range career planning, is able to be a good listener, is willing to share experiences and views, is willing to commit time and effort, provides an "open door" to questions and problems, points out both strengths and opportunities for improvement, and has a vested interest in the growth and development of their mentee.

Benefits to the mentor:

- Satisfaction in helping someone mature, progress, and achieve goals
- Meeting and sharing experiences with other mentors
- Personal ongoing support to help the mentee succeed
- Personal fulfillment through contribution to the Society and the individual

Who Is a Mentee?

Having a mentor can contribute to a successful and satisfying career. Without a mentor, that learning occurs mostly through trial and error. With a mentor, even experienced professionals can benefit from the experiences and expertise of someone who has withstood the trial and can help the mentee avoid the mistakes. Similarly, those new to the industry will discover that being a mentee shortens the learning curve for acquiring the skills and knowledge most critical to a fruitful career.

Benefits to the mentee:

- Discover new talents about yourself
- Career satisfaction
- Expand your personal network
- Maximize your strengths

aspe.org/aspe-mentoring-program



INTRODUCING THE FREEZELESS UNDERCOVER WALL HYDRANT™



- Model 68 freezeless wall hydrant protected by an integral cover
- Drains automatically—even with hose attached
- Replaceable 16 gauge stainless steel cover flips down for easy access
- Tee key prevents unauthorized use
- Sleek, streamlined, low profile design



WOODFORD



WOODFORD MANUFACTURING COMPANY

Excellence. *Always.*

800.621.6032 • www.woodfordmfg.com

Represented by Burke Agency, Inc. • 248.669.2800

Woodford Model 68

BALFREY & JOHNSTON, INC.

Manufacturers' Representatives
13050 Northend
Oak Park, MI 48237
Ph 313 864-2800 Fax 313 864-7219
George D. Johnston: george@balfrey-johnston.com
balfrey-johnston.com

KERR PUMP AND SUPPLY

Manufacturers' Representatives
12880 Cloverdale
Oak Park, MI 48237
Ph 248 543-3880 Fax 248 543-3236
Jamie Caporosso: jamie@kerrpump.com
kerrpump.com

BURKE AGENCY, INC.

Manufacturers' Representatives
2605 E. Oakley Park Road, Suite A,
Commerce Twp, MI 48390
Ph 248 669-2800 Fax 248 669-3310
Brian Burke, Peter Lapham, John Taylor
bburke@burkeagency.com
burkeagency.com

LOCHINVAR

High Efficiency Water Heaters and Boilers
45900 Port Street
Plymouth, MI 48170
Ph 734 454-4480 Fax 734 454-1790
Jason Loverich: jloverich@lochinvar.com
lochinvar.com

DALE PRENTICE COMPANY

Manufacturers' Representatives &
Application Engineering Solutions Provider
26511 Harding Avenue
Oak Park, MI 48237
Ph 800 536-4700 Fax 248 339-5559
Michael Cullen: mcullen@prenticeco.com
Mobile 248 302-5924
prenticeco.com

MAJOR/LOZUAWAY & ASSOCIATES, INC.

Manufacturers' Representatives
1117 W. Grand Blanc Rd.
Grand Blanc, MI 48439
Ph 810 234-1635 Fax 810 234-8389
Mike Ostrowski: moski@lozuaway.com
Mobile 810 287-6983

DAVE WATSON ASSOCIATES, INC.

Manufacturers' Representatives
1325 W. Beecher St.
Adrian, MI 49221
Ph 517 263-8988 Fax 517 263-2328
Rick Johnston: rjohnston@davewatson.biz
davewatson.biz

NEW CENTURY SALES - MEEK/BECK & ASSOC.

Manufacturers' Representatives
1715 Traditional Dr.
Commerce Township, MI 48390
Ph 248 960-1147
Todd Hiler: toddh@newcenturysales.com
Mobile 513 633-2609
Ross Beck: rossb@newcenturysales.com
Mobile (734) 673-2119
newcenturysales.com

**DIVERSIFIED SPEC. SALES, INC./
HOWLEY AGENCY SALES CO.**

Manufacturers' Representative
13261 Northend Ave.
Oak Park, MI 48237-3265
Michael J. Burdette: mburdette@dsshowley.com
Ph 248 398-2400 Fax 248 547-4905
diversifiedspec.com

PAULA. BAKER

ASSE Region #4 Director - Mid West
ASSE International
18927 Hickory Creek Drive, Suite 220
Mokena, IL 60448
Ph 313 399-3072 Fax 248 585-1437
Paul Baker: paul.baker@ualocal98jatc.org
www.asse-plumbing.org

HS/BUY VAN ASSOCIATES, INC.

Manufacturers' Representatives
56 S. Squirrel
Auburn Hills, MI 48326
Jarrett Armstrong, Bill Allen
Ph 888 472-8982 Fax 248 852-0298
info@hsbuyvan.com
hsbuyvan.com

PERFORMANCE ENGINEERING GROUP

Engineered Water Products
32955 Industrial Rd.
Livonia, MI 48150
Alan Deal: adeal@performanceengineering.com
Ph 734 266-5300 Fax 734 266-5310
performanceengineering.com

PROGRESSIVE MARKETING & SALES INC.

Manufacturers' Representatives
7450 Hessler Dr. Rockford Mi 49341

Dave Andrus 616-916-4140 andrus.progressive@gmail.com
Matt Johnson 517-614-1448 mjohnson.progressive@gmail.com
Doug Shaffer 248-648-0187 shaffer.progressive@gmail.com
progressivemarketingandsales.com

R.L. DEPPMANN COMPANY

Manufacturers' Representatives
46575 Magellan Drive
Novi, MI 48377

Gerry Potapa Jr., CPD, Paul Prentice, LEED AP®
Mark Fine, LEED AP®, Chris Lieder
Ph 800 589-6120 Fax 248 354-3763
sales@deppmann.com
deppmann.com

PROGRESSIVE PLUMBING SUPPLY

Wholesale Distributor
31239 Mound Road
Warren, MI 48092
Ph 586 756-8662 Fax 586 756-9077
ppsapplyco.com
Locations: Warren, Detroit, Mt. Clemens, and Oxford

TAGGART-KNIGHT GROUP

Manufacturers' Representatives
37686 Enterprise Ct.
Farmington Hills, MI 48331
Gary O. Taggart
Ph 248 553-4388 Fax 248 553-4653
info@taggartco.com
taggartknight.com

QUALITY WATER & AIR, INC.

Manufacturers' Representative
1402 Souter
Troy, MI 48083
Georgann Kummer, WBE
Ph 248 589-8010 Fax 248 589-8016
qualitywaterair@cs.com
qualitywaterair.com

V. E. SALES COMPANY

V. E. Sales is your source for
the finest quality flow control solutions.
25200 Jefferson Ave.
St. Clair Shores, MI 48081
Thomas Van Egmond
Ph 586 774-7760 Fax 586 774-1490
vesalesinc.com

Expand
YOUR COMPANY
Place your ad here.

ASPE EMC IS HOLDING A VIRTUAL MEETING THIS MONTH DUE TO THE COVID19 STAY-AT-HOME ORDER

NEW 2020-2021 ASPE EMC Board

President

Pam Hartsell, CPD
Strategic Energy Solutions
4000 W. Eleven Mile Rd.
Berkley, MI 48072
(248) 399-1900 x 222
Fax: 399-1901
p_hartsell@yahoo.com

VP Technical

Theresa Card, P.E., CPD,
LEED AP BD+C
Strategic Energy Solutions
4000 West 11 Mile Rd
Berkley, MI 48072
(248) 399-1900 ext 223
allethe@gmail.com

VP Legislative

William Grayzar, CPD
28150 Greenfield Rd.
Southfield, MI 48076
(248)569-1430 ext.333
bill@dsonline.com

VP Membership

Amanda Belcher, LEED GA
Strategic Energy Solutions
4000 W. Eleven Mile Rd.
Berkley, MI 48072
(248) 399-1900 Fax 399-1901
amandab@sesnet.com

VP Education

Kristin Simoneaux, P.E., CPD,
LEED AP
2338 Coolidge Hwy. #100
Berkley, MI 48072
(248) 336-4700
kristin.simoneaux@stantec.com

Treasurer

Rachel Gendich
Strategic Energy Solutions
4000 W. Eleven Mile Rd.
Berkley, MI 48072
(248) 399-1900
Fax: 399-1901
rgendich@sesnet.com

Administrative Secretary

Brianne Hall, P.E., CPD,
LEED AP BD+C, GGP
FTC&H
39500 Mac Kenzie Dr. Suite 100
Novi, MI 48377
(248) 324-4780
bnhall@ftch.com

Corresponding Secretary

George Johnston II
13050 Northend Ave
Oak Park, MI 48237
(313) 864-2800 Fax: 864-7219
george2@balfrey-johnston.com

Chaper Affiliate/Liaison

Dann Holmes
NSF International
789 N. Dixboro Rd
Ann Arbor, MI 48105
(734) 214-6222
r2al@aspe.org

AYP Liaison

George Bellman
Strategic Energy Solutions
4000 W. Eleven Mile Rd.
Berkley, MI 48072
(248) 399-1900 x222
Gbellman72@gmail.com

WOA Liaison

Theresa Card, P.E., CPD,
LEED AP BD+C
Strategic Energy Solutions
4000 West 11 Mile Rd
Berkley, MI 48072
(248) 399-1900 ext 223
allethe@gmail.com

Directors

Michael Melaragni, CPD
38958 Lapham Drive | Livonia, MI
48154-1014
(734) 591-9339
mjmelaragni@yahoo.com

Kari Rosteck
(313) 318-6555
kari.rosteck@gmail.com

John Nussbaum,
IPP, FASSE, FASPE



Advertising Opportunity Information

ASPE EMC News is published 9 times per year (September through May, plus one summer issue if feasible). Yearly advertising rates are \$200.00 per ad for members and \$250.00 for non-members. One time digital full page insert advertisements are \$250.00 for one issue, quarter page (9 issues) \$250.00 - half page (9 issues) \$350.00 and full page (9 issues) \$550.00. Please call Pam Hartsell at (248) 399-1900 x 222 for any questions regarding pricing of ads. Checks should be made payable to ASPE E. Mich. Chapter and mailed to the attention of Pam Hartsell, CPD at Strategic Energy Solution, 4000 W. Eleven Mile Rd. Berkley, MI 48072 . Circulation 400 - Distributed to: Engineers, Contractors, Inspectors, and other industry professionals in Michigan. For contributing articles and all digital artwork email to: Theresa Green, Newsletter Editor at: theresa.m.green@outlook.com

Table Top Sponsorship Information

ASPE Members

- \$200.00 for the 1st table per meeting/per vendor
- \$150.00 for each additional table per meeting/per vendor

Non-Members

- \$250.00 for the 1st table per meeting/per vendor
- \$200.00 for each additional table meeting/per vendor

If a vendor purchases table tops for 3 meetings during the year, a 4th meeting table top will be provided for free.

PAY FAST, PAY EASY
Secure Payments Accepted By

