

MARCH MEETING AGENDA

DATE:

THURSDAY, MARCH 12, 2020

WHERE:

Plumbing Industry Training Center
(map on back page)

4:30 PM - 5:30 PM - **DESIGN**

Plumbing and Public Safety

~ **Scald Awareness**

Presenter: Scott Hamilton (IAPMO/ASSE)

5:30 - 6:00 PM - **DINNER**

Dinner, News & Announcements, Table Top
Vendor Product Presentations and Displays

6:00 - 7:00 PM - **TECHNICAL**

Plumbing and Public Safety

~ **ASSE Series 12000 and Infection Control**

Presenter: Scott Hamilton (IAPMO/ASSE)

7:30 PM to completion (approx. 8:20 PM)

NASPE Car Races

REGISTRATION REQUIRED

Registration link here <https://www.eventbrite.com/e/aspe-emc-march-2020-technical-program-tickets-94838581751>

SEE INSIDE COVER FOR TABLE OF CONTENTS

Cost: ASPE, ASSE, MBPA Mbrs: NC

Non-members: \$20.00 FOR CLASS

From Theresa Card, P.E., CPD, LEED AP BD+C, President of ASPE EMC



Hello from your EMC President-

I don't know about you, but I am done with winter. I need a sun that produces heat! Despite what any ground hog says, it sure looks like spring is still far away. In the meantime, though, the February meeting was great and I am diligently working on my pinewood derby car for our March NASPE races!

Be sure to check out the most current yearly program information here in the latest newsletter as well as on

the website: <https://eastern-michigan.aspe.org/index-3.html>.

Join the Board – If you'd like to be a part of the Eastern Michigan Chapter board, please let us know! We are looking for volunteers to help fill up our board as we have some people who need to step down. No matter how many hours you are willing to give, we have a board slot we can use you in! Being on a local board not only helps you understand all that goes into putting on events and creating opportunities for your fellow engineers, but is rewarding and, let's face it- we have the best board around! We all support and encourage each other in our duties as well as in life!

ASPE/SMSHE Symposium – Save the Dates! April 7th and 8th ASPE EMC and SMSHE will be holding a symposium to cover healthcare related topics. The Symposium will take place at NSF in Ann Arbor and all members (and non-members) are encouraged to attend. We already have some great, reputable speakers lined up – and more are on the way. Stay tuned for more information!

ZURN renews it's AYP Sponsorship! A HUGE thank you to Zurn for renewing their sponsorship of AYP. Although I have aged out of AYP, I thoroughly enjoyed my time in the group and still regularly talk to others around the country that I met by being active in AYP since the beginning back in Orlando.

AYP Leadership Webinars. This three-part series includes interactive learning and seeks to create confidence in the use of conflict resolution tools. Each webinar will increase your knowledge of effective ways to resolve conflict and seek opportunities within a situation.

Find out more: <https://education.aspe.org/products/leadership-development-series-presented-by-aspe-young-professionals-ayp>

Continued on page 2

Contents

President's Report 1 - 2
 Program 3
 In The Know 4
 ASPE 2020 Convention 7
 VP Technical Report 6 - 7
 Jobs Board 8 - 11
 ASPE / SMSHE SYMPOSIUM 12
 NASPE Event 14 - 15
 Feb. Meeting Sponsors + Attendees . . 22
 Photos 23 - 24
 Line Card Sponsors 30 - 31

ASPE EMC BOARD MEETING
 Tuesday, March 3, 2020: 4:30 - 6:00 PM in Berkley, MI

NASPE RACE EVENT IN MARCH
 Thursday, March 12, 2020 in Troy, MI (see pgs. 12-13)

ASPE / SMSHE SYMPOSIUM EVENT
 April 7th & 8th, 2020 @ NSF International in Ann Arbor, MI

ASPE 2020 CONVENTION
 Sept. 11-16, 2020 in New Orleans, Louisiana (see pg. 7)

CPD AND CPDT EXAM AND REGISTRATION
 See pg. 14 for scheduling dates.

ASPE IS ACCEPTING APPLICATIONS FOR THE ALFRED STEELE SCHOLARSHIP
 Contact Stacey Kidd for more information at (847) 296-0002, or email skidd@aspe.org

President's Report (cont. from page 1)
 Theresa Card, P.E., CPD, LEED AP BD+C

ASPE EMC Jobs Program! If you are a company looking to hire a new employee or an engineering looking for the next stage in your career – simply email jobs.aspe.emc@gmail.com and we will (1) post Company’s job openings in our Newsletter and (2) confidentially connect job seekers with companies looking. All information sent to jobs.aspe.emc@gmail.com is completely confidential and you will be asked for confirmation before your resume is passed on to any company. We hope this added benefit will help all involved.

And finally, this year’s Convention in New Orleans is sure to be a showstopper. When registration comes out, be sure to book your hotel fast! Information on the convention can be found here: <https://expo.aspe.org/>

Cheers,
 Theresa Card, PE, CPD
allethe@gmail.com

SAVE THE DATES!

March 12, 2020
 NASPE RACE

April 7th & 8th, 2020
 ASPE/SMSHE Symposium

LATEST NEW MEMBER(S)
 ~ WELCOME ~

ROBERT DUNN

MARCH DESIGN SESSION

4:30-5:30 PM

TOPIC: Scald Awareness



Scott Hamilton

This presentation will cover the scald issues found today. Due to Legionella scares, higher hot water temperatures are being utilized in the hot water distribution systems. Care needs to be taken to find the balance between scalding and Legionella protection. We will cover some of the options available which includes the proper use and location of thermal mixing valves.

Presenter: **Scott Hamilton** is a 31-year licensed plumber and member of Plumbers Local 75, Milwaukee, WI. Scott graduated from the UA Instructor Training Program in 1999, and he has been training the industry for 27 years. Throughout his career, he has served on many state and national code, standard, licensing and training committees. He has been involved with standard and certification development with ASSE and IAPMO for the last 13 years. Scott is currently the Senior Director at IAPMO/ASSE.

MARCH TECHNICAL PROGRAM

6:00-7:00 PM

TOPIC: ASSE Series 12000 and Infection Control

This presentation will explain the ASSE Series 12000 Standards and certification programs. The importance of infection control and how the ASSE Series 12000 can help achieve the CDC's goals to eliminate healthcare acquired infections (HAI) will be discussed. Healthcare acquired infections continue to be a major problem. The other Series 12000 certification pertains to water quality. Water quality is a growing concern. Discussions will cover the legionella concerns, ASHRAE 188, ASHRAE 12, and the CDC Toolkit.

Presenter: **Scott Hamilton**

NASPE RACES

7:30 to completion (approx. 8:20 PM)

Call for Abstracts NOW OPEN!



Joint ASPE EMC / SMSHE Healthcare Symposium

Date: April 7-8, 2020

Location: NSF International in Ann Arbor

Call for Abstracts		Topics	Speaker
		Engineering out Legionella	Christoph Lohr, P.E., CPD
		Medical Gas / Vacuum Systems	
		Effective Water Management Plans	
		Medical Devices that use Water	
		Cooling Tower Systems	
		Filtration Systems / Filtration Devices	
		Bio-Safety Cabinets (USP 800)	
		Possible Topics	
		Infection Prevention and Healthcare Design	
		Sterilization Process Department (SPD)	
		Computational Fluid Dynamics in an OR	
		FGI 2018 for Health Care	
		Fire Protection Systems	
		PFAS	

Contact:

Kristin Simoneaux, P.E. CPD
ksimoneaux@Stantec.com
 or
 Dann Holmes
dholmes@nsf.org

Networking Event:

Plumbing Engineers and Health Care Engineers at the DoubleTree by Hilton North Ann Arbor

IN THE KNOW

NEW CODE BOOK ORDER FORM

Please use the most current book order form from the Code Study & Development Group found in this newsletter. Contact Mr. Dann Holmes with questions at dholmes@nsf.org or (734) 214-6222

TABLE TOP SPONSORSHIP PRICING

ASPE Members

- \$200.00 for the 1st table per meeting/per vendor
- \$150.00 for each additional table per meeting/per vendor

Non-Members

- \$250.00 for the 1st table per meeting/per vendor
- \$200.00 for each additional table meeting/per vendor

If a vendor purchases table tops for 3 meetings during the year, a 4th meeting table top will be provided for free.



Don't miss the

NASPE Races!

March 2020

QUASAR™

UVC-LED WATER TREATMENT

Exclusively through OASIS

Model Code:

- PWEBQ

Features:

- **Pathogen Control:** UVC-LEDs disinfect the water when it is being dispensed, eliminating the chance of recontamination and reducing 99.99% of pathogens.
- **Pathogen Inactivation:** Effective against a wide range of water-borne pathogens, including Legionella and chlorine resistant micro-organisms such as Cryptosporidium and Giardia.
- **Chemical Free:** UVC-LEDs provide physical treatment of water without the use of harmful chemicals or altering taste.
- **Mercury Free:** Conventional UV lamps contain mercury, a hazardous material which requires special disposal. UVC-LEDs are mercury-free.
- **Freshfield:** Alcove plastic is manufactured with our exclusive silver-based antimicrobial compound to prevent degradation and deterioration caused by bacterial growth.
- **Extremely Low Power:** UVC-LEDs do not transfer heat to the treated water.
- **Constant Protection:** UVC-LEDs pulse on every 10 minutes for a short duration to keep the dispense point sanitized between dispenses.
- **Fall Safe:** Prevents water from dispensing if the QUASAR unit becomes disconnected or falls.
- **Long Life:** Will last three years or more because UVC-LEDs are only on during water dispense or standby mode constant protection.

UVC-LED Treatment right at the point-of-dispense

Represented by New Century Sales:

<p>WEST MICHIGAN Michael Zago D (248) 960-1147 x 107 C (616) 293-2121 E mikez@newcenturysales.com</p>	<p>WEST MICHIGAN Rod Cox D (248) 960-1147 x 116 C (616) 706-1481 E rodc@newcenturysales.com</p>	<p>EAST MICHIGAN Todd Hiller D (248) 960-1147 x 106 C (513) 633-2609 E toddh@newcenturysales.com</p>	<p>EAST MICHIGAN Ross Beck D (248) 960-1147 x 115 C (734) 673-2119 E rossb@newcenturysales.com</p>
--	--	---	---

www.newcenturysales.com

ASPE YOUNG PROFESSIONALS

Hey Young Professionals!

Learn more about our group!



ASPE Young Professionals (AYP) is dedicated to the needs of plumbing engineers and designers 35 years old and younger. Your local ASPE Chapters have been busy organizing exciting opportunities designed to help you excel in your career, including:

- » Partnerships with other associations
- » Social and networking events
- » Educational offerings
- » Mentoring programs
- » And more!



To learn more about the ASPE Young Professionals special-interest group, email ayp@aspe.org and visit aspe.org/ayp.

Exclusive AYP Sponsor



VP Technical Report

Kristin Simoneaux, P.E., CPD, LEED AP



We had a great turn out for the February meeting wrapping up with part 3 of our series on venting and delving into heat trace design. If you missed it, here are some highlights from the meeting (a huge thank you to Theresa Card for lending me her meeting notes since I was not able to attend):

Venting:

- Island venting predates air admittance valves. The island vent pitches toward the drain. It is more expensive that combination waste/vent due to the extra piping.
- Single stack venting was adopted into code but is not typically used in Michigan. The method is a derivative of the Philadelphia single stack method. The sanitary stack is upsized to act as a wet vent. The horizontal distance for the branches is limited as a result. This method works best for areas where the fixtures stack from floor to floor. The lower two floors cannot tie into the system.
- Air admittance valves (AAV) may be used where traditional hard piped venting is a challenge. For the system to operate appropriately, not all vents can terminate with an AAV. At least one vent shall be hard piped and terminate to atmosphere. The AAV's must be in a ventilated space since it allows air into to the system but not out. Before using AAV's on a chemical waste system, the AAV certifications should be checked to confirm they are rated for that application. There are some AAVs that are rated for use in plenums but should be confirmed before use in those applications.
- Sections 919 and 920 of the Michigan Plumbing Code allow for engineers to design their own venting system.
- Venting methods can be combined as necessary to provide a fully vented system.

Heat Tracing:

- Due to the pungent odor involved with cleaning grease interceptors, the systems were being unmaintained or overridden to allow the FOG waste into the city sewers. As a result, more grease interceptors are being moved outdoors. Locating the interceptors outdoors can result in longer lengths of piping from the fixtures to the interceptor. This give more time as the FOG waste passes through the piping to congeal.
- General rules for heat tracing grease piping:
 - o It is recommended that piping systems over 100 feet of developed length from the fixtures to the interceptor should be heat traced.

- o It is recommended that piping systems that are more than 25 developed length outside the building be heat traced.
 - o The heat trace set point temperature is typically 110-120 deg F.
 - o Provide line sensing thermostats on the piping that is anticipated to the coldest (typically at the interceptor). The line sensing thermostats are NOT the controllers! A controller will still need to be provided.
 - o Apply heat trace to the bottom of the pipe and place aluminum tape over the cable.
 - o Most manufacturers have sizing programs to help you size your system. Many have specific applications for grease flow maintenance.
 - o It is recommended for all buried pipe to have 2 passes for the heat trace in case one cable breaks or fails heat is still distributed to the pipe.
 - o Drawings should indicate power connections locations, approximate linear feet, voltage, and circuit breaker size.
 - o Line sensing probes must be on the pipe to work, but the RTDs can fail, so recommend putting in a conduit with a blind plug so the sensor can be pulled out and replaced.
 - o Heat tracing has a 30 year useful life. Especially buried piping that is heat traced as it is not exposed to the elements.
- Heat traced piping always needs to be insulated!
 - There are two types of heat tracing cable outer jackets: polyolefin and Teflon. Teflon is shiny gray, while polyolefin is dull gray. Polyolefin can leach and be damaged by FOG. For FOG waste applications, Teflon jacketed is recommended.
 - NEC requires no connections below grade. Provide the power connection in a wall or post mounted junction box. End connections and tees/splices cannot be buried either.
 - A separate power and temperature monitoring conduits are required for buried applications.
 - NEC requires a label every 10 feet stating the piping is heat traced.
 - NEC requires ground fault protection. Recommend finding a controller with the ground fault circuit protection built in.
 - An extended 10 year warranty is available by some manufacturers, if the cable is specified to be tested (3) times during construction as required by the manufacturer.
 - Heating cables wick water! When installing, the cable should be protected from weather.

Continued on page 7

VP Technical Report (cont. from page 6)

Kristin Simoneaux, P.E., CPD, LEED

- PVC piping requires more aluminum tape than cast iron pipe. This involves extra labor as it complicates the installation. Keep in mind during value engineering exercises.

Our next meeting is March 12th (a Thursday!!) and will be covering scald awareness and ASSE Series 12000 and Infection Control by Scott Hamilton. The meeting will end with the NASPE car races. I look forward to seeing you all there! If you are interested in racing but need a car, please contact me!

Kristin Simoneaux P.E., CPD, LEED AP

Associate / Senior Mechanical Engineer

Direct: (248)336-4760

ksimoneaux@stantec.com



**AS AN ASPE MEMBER YOU CAN
RECEIVE THE PIPELINE
PUBLICATION - ACCESS
ARCHIVE EDITIONS AT
<http://aspe.org/Pipeline>**



The American Society of Plumbing Engineers (ASPE) Convention & Expo

The 2020 ASPE Convention & Expo is dedicated to quality education, connections and experiences for those skilled in the design, specification and inspection of plumbing systems.

2020 ASPE Convention & Expo
September 11-16
Ernest N. Morial Convention Center | New Orleans, Louisiana

Save the Date

AYP Liaison Report

George Bellman



The latest adventure to the Detroit Symphony Orchestra Hall

Hey everyone! Thank you to everyone who came to the joint ASPE+ASHRAE Detroit Symphony Orchestra hall event this past month. I first would like to thank the sponsors and significant contributors to the event:

Jennifer Block of Victaulic (sponsor)

Zivoko Dimetrieski of Victaulic (sponsor)

Rebecca Godwin of DSO (sponsor)

Aaron Frantz of Young Engineers of ASHRAE

Kari Rosteck of ASPE

Our tour guide for the evening was the DSO's Director of Facilities Management, Mr. Daniel Saunders. Mr. Saunders' background is in HVAC, Boilers, Chillers, and Energy Management, and he is a Certified Energy Manager.

At the start of our tour, Mr. Saunders was very excited and proud to share with us what has been going on at the DSO. This building has been the heart of musical talent for over 100 years; the attention and care to acoustic design are apparent in every facet. The first part of our tour was on the Orchestra Hall's upper balcony. As we looked out over the stage prepared for the nights' performance and up at the detailed ceiling with its antique chandeliers and ornate exhaust grilles, Mr. Saunders continued into how challenging the 2,000 seat Orchestra Hall was to maintain with a 100% outdoor air unit. The stage, lower and upper balcony seating and instrument storage each had their own temperature and humidity requirements. The most critical of which was the instrument storage room, which houses legendary instruments such as Stradivarius violins and Steinway pianos. And yes, they are often played at the Orchestra Hall.

After a quick photo to capture the spectacle, we traveled back to the 3rd-floor landing outside the Orchestra Hall to marvel at the gold color scheme and a quarter of million-dollar high-efficiency lighting upgrades throughout the atrium.

The center fixtures seemed to defy gravity as they extended through the whole of the atrium to the first floor — clad in glass, the light fixtures had a close resemblance to floating pillars of jade.

The mechanical rooms were up next — an orchestra of another kind. Everyone was chatting about the steam system, glycol heating system, and sound insulation covering every inch of the mechanical room (walls, equipment, ducts, and pipes); and were pointing out the stark absence of mechanical sounds one would typically hear in a densely packed place such as this. Walking through the room had a feeling like walking through a tunnel pass in the mountains — with the mountain humming along in a happy mood. A question surfaced after walking into another room housing the twin centrifugal chillers: How is it possible to service all this? These particular chillers were entombed in the basement with nothing more than a small 3'-0" x 6'-8" door for access. But the answer was simple, of course — piece by piece.

Mr. Saunders had one final item on the agenda for us to see. He had just finished upgrading the DSO's HVAC controls along with having a Chiller Plant Manager installed! After we filed into a large conference room we all looked up at a large tv screen depicting every piece of equipment on the premises. Anything you'd ever want to know about was accessible through this system. The temperature at any sensor? Done. Humidity readouts? There. This was a composer of facilities most sought after tool and a perfect crescendo to the tour.

Even though the tour now had ended the second act had now begun — our sponsors had also purchased front row tickets for everyone to see that nights show! After an exciting night, I was certainly ready to sit, relax, and enjoy the most beautiful Mozart, Ravel, and Schumann that no pair of headphones could ever replicate. (see photo next pg.)

George Bellman,
ASPE Region 2 EMC AYP Liaison
gbellman@sesnet.com





Photo of the joint ASPE + ASHRAE attendees at the Detroit Symphony Orchestra Hall

review 
"Uniting the world plumbing industry and promoting its public health and environmental role"



"A Relentless Commitment to Excellence"

INSTALLATION, SERVICE & MAINTENANCE SINCE 1970

Project Manager (PM)

Job Competencies and Description

Department: Construction Department

Reports to: Vice President

Supervisory Responsibility:

This position manages field technicians and is responsible for the performance management and accountability of these employees.

Positional Overview:

The Project Manager will plan, execute and finalize projects according to strict deadlines and within budget. This includes acquiring resources and coordinating the efforts of team members and third-party contractors in order to deliver projects according to plan. The Project Manager will also define the project's objectives and oversee quality control throughout its life cycle.

Qualifications:

Required Education and Experience:

1. Associates/Bachelor's degree in a technical discipline, or business management is preferred.
2. 1-2 years of experience in managing or leading the work of others.

Preferred Education and Experience:

1. Five years relevant work experience with an architecture, engineering or construction firm required.
2. Industry Certifications

Competencies:

1. Communication Proficiency
2. Customer/Client Focus
3. Leadership
4. Organizational Skills
5. Performance Management
6. Problem Solving/Analysis
7. Technical Capacity

Additional Eligibility Qualifications:

1. Experience working independently and, in a team-oriented collaborative environment.
2. Can conform to shifting priorities, demands and timelines through analytical and problem-solving.
3. Strong interpersonal skills and communication skills to effectively interface and gain cooperation with all levels of company structure, including outside vendors and General Contractors.
4. Proficient in Microsoft Office (Word & Excel), clearly written proposals, detailed estimating templates for bids and change orders; familiar with project scheduling software.
5. Ability to effectively prioritize and execute tasks in a high-pressure environment is crucial.

Project Manager (PM) – v. 11/1/19

6250 NINETEEN MILE ROAD • STERLING HEIGHTS • MI • 48314 • OFFICE: 586.737.9900 • FAX: 586.737.9901



"A Relentless Commitment to Excellence"

INSTALLATION, SERVICE & MAINTENANCE SINCE 1970

Essential Functions:

1. Direct and manage project development from start to finish.
2. Define project scope, goals and deliverables that support business goals in collaboration with senior management and stakeholders.
3. Ensure project cut sheets, drawings, RFI's and all pre-construction documents are timely submitted.
4. Effectively communicate project expectations to team members and stakeholders in a timely fashion.
5. Estimate the resources and participants needed to achieve project goals.
6. Draft and submit budget proposals and recommend subsequent budget changes where necessary.
7. Determine and assess need for additional staff and make the appropriate recruitments as necessary.
8. Delegate tasks and responsibilities to appropriate personnel.
9. Identify and resolve issues and conflicts within the project team.
10. Plan and schedule project timelines and milestones and interpret various scheduling charts and software.
11. Track project milestones and deliverables; ensure long lead equipment is released timely.
12. Prepare status/progress reports and analyze results – troubleshoot problem areas.
13. Proactively manage changes in project scope, identify potential crises and devise contingency plans.
14. Coach, mentor, motivate and supervise project team members and contractors.
15. Build, develop and grow business relationships vital to success of the project.
16. Conduct project post-mortems and create recommendations report to identify successful and unsuccessful project elements.

Work Environment:

- This position operates in both an office and field setting. This role routinely uses standard office equipment, Microsoft Software and data management software.

Position Type and Expected Hours of Work:

1. This is a full-time (40-50 hour/week) position.
2. The Project Manager is expected to work during all normal business hours, Monday - Friday, 7:00 a.m. to 5:00 p.m., with additional on-call shifts required.
3. Occasional evening and weekend work may be required as job duties demand.

Travel:

- Project Managers are expected to travel to all jobs.

Professional Development Expectations:

- Update job knowledge by participating in educational opportunities, reading professional publications, maintaining personal networks, and participating in professional organizations.

Interested??
Email John Johnson, Vice President
[@jjohnson@macombmechanical.com](mailto:jjohnson@macombmechanical.com)

Project Manager (PM) – v. 11/1/19

6250 NINETEEN MILE ROAD • STERLING HEIGHTS • MI • 48314 • OFFICE: 586.737.9900 • FAX: 586.737.9901



Plumbing Designer

GMB is currently seeking a full time, direct hire Plumbing Designer for our Royal Oak Office. The Plumbing Designer is responsible for leading GMB's design teams in the design of domestic plumbing systems.

What it is like to work here:

We're unique. Sure, every firm says that, but we *know* what makes us unique. We constantly develop well-rounded professionals who become the best at what they do. Our Team of Teams approach provides a linkage between all employees that gives us the ability to think and act as a unit and as we grow allow new employees to be successful at a rapid pace.

At our core we deeply value talent development and opportunities for growth. We continue to build a culture of empowering our employees, giving them opportunities to be the best they can be within a variety of communities, both internal and external, so that we all learn, grow, and give. Whether you come join us in our Michigan offices of Holland, Grand Rapids and Royal Oak or Indianapolis, Indiana, your opportunities are as limitless as your imagination. Come be a part of designing the future.

What you will get to do:

- Utilize your expertise to support GMB with the design of complex plumbing systems.
- Prepare construction documents using Revit.
- Design domestic water, storm water, sanitary drain, waste and vent systems, fuel systems, medical gas systems, and laboratory gas systems.
- Prepare documents and calculations for the LEED certification process.
- Coordinate design efforts working closely with our project teams, clients, and building owners.
- Produce one-line diagrams/schematics, hydraulic calculations of plumbing systems, and calculations in the sizing of plumbing systems and equipment selection.
- Ensure that all drawings are prepared with accuracy, neatness and speed.
- Communicate with team members, other disciplines and outside vendors to obtain necessary information for designs and drawings.
- Assist the design team in the process of assembling organized sets of drawings.
- May assist in data collection and/or field verification, and work in conjunction with our teams of engineers to help develop all aspects of a project.

What are some of the requirements to work for us?

- 5+ years of plumbing design experience.
- Prior experience implementing designs through construction.
- Demonstrated ability to create 3D models, focusing on Plumbing but with the ability to coordinate with all disciplines.
- Ability to manage design of multiple projects/deadlines simultaneously.
- Must possess a technical knowledge base with desire to learn, lead, and grow.
- Must be able and willing to travel locally for field work at client sites.



What might set you apart from other candidates?

- Associates or Bachelor's degree in Plumbing Design / Engineering (or degree related to HVAC Design or Mechanical Engineering) is preferred.
- Proven ability to prioritize effectively, have good follow-through, and practice self-implemented quality control measures.
- CPD certification is a plus.
- Ability to design automatic fire suppression systems.
- Plumbing design experience in A/E firm preferred.
- Proficiency with Autodesk Revit.
- A passion for plumbing design.

This is a direct, full time, permanent position. Salary will be commensurate with experience, including an excellent benefit package. Must have current and continuing right to work in the United States without sponsorship. All qualified applicants will receive consideration for employment without regard to race, color, religion, sex, age, sexual orientation, gender identity or national origin.

**If you are interested, please reach out to:
Rose Wagner
GMB
rosew@gmb.com
616.796.0200**

ASPE/SMSHE SYMPOSIUM 2020

Hi All!

As you may have seen by the save the date flier, we have partnered with SMSHE (Southeastern Michigan Society for Healthcare Engineers) for a fun and exciting new healthcare symposium coming up April 7th and 8th. NSF International is graciously hosting the symposium. You can register for the symposium at the following link: <https://cvent.me/YgWWBy>. Registration fee is \$75 for students/healthcare workers, \$125 for ASPE members and \$140 for non-members/late registration. There is a networking event the evening of the 7th that all symposium attendees are invited to attend. If you wish to bring a guest to the networking event, you can for an additional \$50 fee. If you have any questions please feel free to contact me (ksimoneaux@stantec.com). Hope to see you there!



This Healthcare Symposium is co-hosted by American Society of Plumbing Engineers-Eastern Michigan (ASPE-EMC) and Southeastern Michigan Society for Healthcare Engineering (SMSHE) and will take place at NSF International in Ann Arbor, MI.

Join us for two days of education with dynamic speakers who will discuss the latest changes in healthcare regulations and requirements, a tour of state-of-the-art laboratory spaces and networking with industry peers.

Your registration includes access to all of the symposium sessions from April 7-8, two light breakfasts, two lunches and refreshments during breaks.

[click here to register!](#)



Kristin Simoneaux P.E., CPD, LEED AP
Associate / Senior Mechanical Engineer

KIMAX® Glass Drain and Vent Systems



- Low volatile organic compounds (VOCs)
- Will not burn or emit toxic fumes
- Maximum corrosion resistance
- Flexibility, adaptability, modularity
- Safe and simple installation
- Lowest life-cycle costs

Tro Sales Company
 3406 West 12 Mile Road
 Berkley, MI 48072
 (248) 546-5354

SCHOTT North America, Inc
 info.drainline@us.schott.com
 www.us.schott.com/drainline



EDUCATION



PUBLIC VENUES

COMMERCIAL OFFICES

T&S IS HERE >

T&S is proud to be a trusted name across a wide range of markets — staying at the forefront of today's evolving industry and providing a vast selection of reliable solutions that meet required codes and compliances.

Learn more at tsbrass.com/markets.



HEALTHCARE



Find us in



T&S plumbing products represented in Eastern Michigan by: Diversified Spec Sales - 248-398-2400



In celebration of
World Plumbing Day
the EMC-ASPE will be
hosting the following
event at the
March 12th, 2020 meeting:



NASPE racing is a timed race similar to a Pinewood Derby Race utilized in the Cub Scouting Program around the world.

The NASPE Race is themed to celebrate **World Plumbing Day**.

World Plumbing Day is an international event held every year on March 11 and was initiated by the World Plumbing Council to celebrate the important role plumbing plays in the health and safety of modern society.

**WORLD
PLUMBING
DAY**

EMC-ASPE is encouraging chapter members to design, build and race cars in celebration of World Plumbing Day. A trophies, awards and prizes will be provided at the event. Based on the number of entries prizes will be awarded for:

- Fastest race time 1st, 2nd and 3rd place.
- Best representation for World Plumbing Day
- Best representation of a Plumbing Product.
- Best representation of a Plumbing Tool.
- Best Green Design

EMC-ASPE Board members will serve as Official Judges for the event and William Grayzar chapter V.P. Legislative will serve as the race moderator and official.

OFFICIAL RACE AND ASPE TECHNICAL MEETING:

WHEN: Thursday, March 12th, 2020.

WHERE: Plumbing Industry Training Center located at 1911 Ring Drive in Troy, Michigan

AGENDA:

- | | |
|---------------------------------|---|
| ➤ Race Registration & Weigh-In: | 4:30 P.M. till 7:00 P.M. |
| ➤ Design Class | 4:30 P.M. till 5:30 PM |
| ➤ Dinner | 5:30 P.M. till 6:00 P.M. |
| ➤ Technical Meeting | 6:00 P.M. till 8:00 P.M. |
| ➤ NASPE Race | 8:00 PM till completion (approx. 8:20 P.M.) |



CODES AND STANDARDS for NASPE Racing are as follows:



OFFICIAL RACE CAR DESIGN BUILD KIT:

1. Official Race Car Kits must be the same as those used for the Cub Scouting program pinewood derby races. Car kits will be available at the ASPE Technical meetings, or they can be obtained by contacting an ASPE board member. **The kits are free for members who commit to be in attendance at the March 2020 technical meeting.** Official car kits may also be purchased from your local scout store.
2. If you have a child, grandchild, nephew, etc. involved in Cub Scouting, please feel free to use their car for the NASPE race, provided it meets the Specification for Construction requirements. Car must still be registered and weighed-in on the night of the event to be eligible for prizes.
3. Participants may enter more than one (1) car for the event, but only the first car kit is free. Additional kits can be purchased at a cost of \$5.00 each.



CAR SPECIFICATIONS FOR CONSTRUCTION: (Also see sheet included with your official car kit).

1. WEIGHT: 5 ounces **maximum** (but can be lighter). Min. weight of 4 ounces is suggested.
2. LENGTH: 7 inches **maximum** (but can be shorter).
3. WIDTH: 2 3/4 inches **maximum**, and 1 3/4 inches **minimum** between the front wheels and the same between the rear wheels. Otherwise, your car will not fit over the track guide rail.
4. CLEARANCE: 3/8 inches **minimum** from bottom of car to track (rail) top. Otherwise, your car will not clear the track guide rail.
5. WHEELS: You must use the wheels supplied with your official car kit (or similar BSA official racing wheels available at your local scouting shop).
6. Axles do not necessarily have to be placed in the pre-drilled slots, but the axle (nails) supplied in your car kit **MUST** be utilized.
7. **NO**, bearings, moving or loose parts are allowed **ANYWHERE** on or in the car.
8. The car shall not ride on any kind or type of spring.
9. Graphite (or dry lubricant) may be added to the wheels until the car is registered and weighed-in, but not after. **No Liquid or oil base lubricants will be allowed** as they can ruin the racing surface.

REGISTRATION AND WEIGH-IN PERMITS:

1. All cars must be registered and weighed-in to be eligible to participate in the event.
2. Your official car number will be provided during registration and weigh-in period.
3. Cars will be impounded (retained) by the race staff until completion of the event at which time they will be returned to the participants.
4. If a car is not in compliance with the codes and standards outlined above it will be disqualified and will not be eligible to receive trophies and awards. However, at the discretion of the race official the car may still be allowed to race.
5. If you are unable to be present for the registration and weigh-in period, but still wish to participate, please contact the race official to make arrangements register and weigh-in car prior to March 10th, 2015.

“Good Luck and Have FUN Racing”





CERTIFIED IN PLUMBING DESIGN

CPDT - 2020 EXAM DATES:

October 5 - 11, 2020 or October 12 - 18, 2020

Registration opens: TBD

Registration closes: TBD

CPD - 2020 EXAM DATES: March 30 - April 5, 2020

Registration opened: Dec. 1, 2019

Registration closes (estimated): March 19, 2020

Go to the national [ASPE website](#) for more information

ALL-IN-ONE SCALD PROTECTION



420-T Series

Now there's no need to install a thermostatic mixing valve below the sink.

The new 420-T Series combines Chicago Faucets durability with integrated scald protection. The result is a solid, easy-to-install restroom faucet that complies with ASSE 1070 requirements. With the 420-T, everything you need to meet current building codes and protect users against scalding is built right into the faucet.

Visit chicagofaucets.com or call your local representative for more information.

Taggart-Knight Group

248/553-4388

info@taggartknight.com





High Efficiency Water Heaters
High Efficiency Heating Boilers
Custom System Solutions
Storage Tanks

Heating Boilers
Hot Water Supply
Pool/Spa Heaters
Storage Tanks
Complete Parts Stock



Snowmelt Systems
Radiant Floorheat Systems



Residential Water Heaters
Commercial Water Heaters
Storage Tanks
Complete Parts Stock

Natural Gas / Propane / Electric / Oil
3,000 to 4,000,000 BTU's

- ALSO -

Aldrich Boilers / Holby Valves / Valley Water Softeners



KERR PUMP AND SUPPLY

Web Site: www.kerrpump.com
Jamie Caporosso: jamie@kerrpump.com
12880 Cloverdale, Oak Park, MI 48237
Ph.: (248) 543-3880 Fax: (248) 543-3236

Liquid Pumps
Vacuum Pumps
Heat Exchangers
Blowers
Related Equipment
and Accessories

Sales • Service • Repair



AURORA FIRE PUMPS

Compact Fire Pump Systems

- UL Listed/FM Approved Aurora Fire Pump
- UL Listed/ FM Approved Fire Pump Controller
- Capacities of 50-750 Gpm.
- Pressures of 40-160 Psi.
- Aurora Model PVM (close coupled to an ODP motor.)

Vertical Split Case Electric Drive Fire Pump

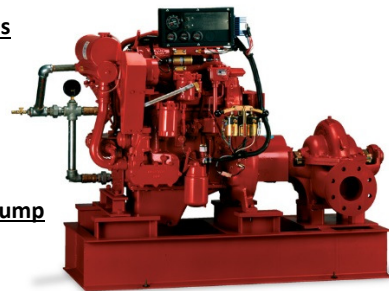
- Electric Driven
- For Commercial, Industrial and Marine use only.
- UL Listed/ FM Approved/NFPA-20 Design

Horizontal Split Case Diesel Drive Fire Pump

- Diesel and Electric driven available.
- Flows at 250 gpm to 5000 gpm.
- Pressures available up to 490 Psi.

PLEASE INQUIRE TO KERR PUMP FOR PRICING,
SELECTIONS, OR TESTING ON EXISTING.

ALSO, PLEASE SEE www.aurorapump.com



Michigan's Oldest Supplier of Pumps and Process Equipment - 1905



THE BEST OFFENSE IS A GOOD DEFENSE.



Defend against the test of time and use cast iron soil pipe. Ensure success by knowing when and where to specify cast iron soil pipe. Did you know you can earn CEU's by taking a foundry tour to see how cast iron pipe is made or attend a local lunch and learn? Contact your local technical services manager today.



LEARN MORE:
mcwaneplumbingtechservices.com



TRITON™

Introducing TRITON™, The Most Intelligent High-Efficiency Commercial Gas Water Heater In the Market



TRITON SU BASE

- LeakSense™
- 130K–400K BTU
- Up to 97% Efficiency
- Easy Retrofit Across Brands
- Health Checks
- Built-in Condensate Neutralizer
- EcoNet® Smart Monitoring Technology
- Integrated WiFi
- Scheduling Capability
- Power Anodes
- Full Modulation
- 3-Year Warranty



TRITON SS PREMIUM

Standard Features, Plus:

- LeakGuard™
- Integrated BMS Connectivity
- BACnet (MS/TP)
- Energy Usage Reports
- Water Usage Reports
- 5-Year Warranty

ELIMINATE THE EMERGENCY

LeakSense™ – Intelligent leak detection system catches leaks as small as a grain of sand and provides real time alerts that help to prevent catastrophic failure.

LeakGuard™ – All inclusive leak detection and prevention system with proprietary auto shut off valve prevents catastrophic damage and allows no more than 24 ounces of water to escape the tank in a vacuum lock.

EcoNet® Smart Monitoring Technology with Integrated WiFi – Exclusive technology provides performance updates and alerts via both mobile device and full-color LCD display.

Systematic Health Checks – Ongoing self-monitoring of Triton's most vital components detects and alerts of potential issues.

Preventive Maintenance Alerts – Preventive maintenance reminders to extend life of the tank.

EASY RETROFIT

Universal Retrofit Across Brands – Replace any brand in the market with multiple water connection points and flexible venting options.

Multiple Connection Points – Multiple water connections at the top, side and bottom of the unit simplify installation.

Variety of Flexible Venting Options Including InnoFlue® Flex Venting – Ideal for replacement and new installs with a selection of the most flexible PVC venting choices, including Polypropylene, PVC, CPVC, InnoFlue® Flex Venting and ABS materials; installed in power direct and power vent configurations and can vent 2, 3, 4 and 6 inch diameters.

Patented Built-In Condensate Neutralizer – Built-in condensate neutralizer reduces water acidity for safe drainage at no additional cost.

BUILT TO LAST FIVE YEARS LONGER

Triple Pass Heat Exchanger – Constructed with premium ASME-grade steel to minimize rust and corrosion for extended tank life and maximum thermal efficiency.

Advanced Power Anodes – Self-adjusting, non-sacrificial power anodes provide systematic monitoring of anode health and remaining life on full-color LCD unit display.

REPRESENTED BY:

New Century Sales
1715 Traditional Dr
Commerce Twp, MI 48390
Office: 248-960-1147

Todd Hiler
Cell: 513-633-2609
toddh@newcenturysales.com



Rheem.com/Triton



[calQlate Your Potential Energy Savings]

Booster system sizing can be difficult. That's why there's calQflo.

QuantumFlo's advanced innovation makes us the premier industrial manufacturing and distribution leader of intelligent pump system technology.

We offer the industry's revolutionary online booster system sizing software, calQflo, that selects the most efficient booster option for your needs—so that your system keeps pumping long into the future! With calQflo, you can:

- Compute the most **size-appropriate** system for your projects.
- **Save money** by selecting **energy-efficient** specs.
- Gain all of this information for **free!**



Get 20-50% Potential Energy Savings from Standard Sizing



Quality Water & Air, Inc.

Quality Water & Air, Inc.
 1402 Souter
 Troy, MI 48083
 Phone: 248-589-8010
 Email: qualitywaterair@cs.com
 Website: www.qualitywaterair.com
 Contact: Georgann - Chuck - Paul



Every Panel Meets UL508A with a 100KAIC (SCCR) Withstand Rating

<p><i>American Standard</i></p> <p>www.americanstandard-us.com (Kitchen & Bathroom)</p>	<p>AMTROL</p> <p>www.amtrol.com (Expansion Tanks)</p>	<p>amc KITCHEN APPLIANCE Anaheim Manufacturing Comp</p> <p>www.anaheimmfg.com (Garbage Disposals)</p>	<p>BASCO</p> <p>www.bascoshowerdoor.com (Shower Doors)</p>
<p>Bradley</p> <p>www.bradleycorp.com (Washroom Solutions)</p>	<p>CALEFFI Hydronic Solutions</p> <p>www.caleffi.com (Hydronic Accessories)</p>	<p>FIAT PRODUCTS</p> <p>www.fiatproducts.com (Shower Floors)</p>	<p>GROHE</p> <p>www.grohe.com/us (Faucets)</p>
<p>MATCO-NORCA Global sourcing. National compliance. Local service.</p> <p>www.femyers.com (Water and Waste Pumps)</p>	<p>MYERS</p> <p>www.femyers.com (Water and Waste Pumps)</p>	<p>Oasis</p> <p>www.oasisbath.com (Fiberglass & Acrylic Tub & Showers)</p>	<p>OASIS</p> <p>www.oasiscoolers.com Water Filtration Coolers</p>
<p>OATEYSCS Supply Chain Services</p> <p>www.oatey.com (Cherne, Dbn Brass, Harvey & Hercules)</p>	<p>Panasonic USA</p> <p>https://na.panasonic.com/us/home-living-solutions/ventilation-indoor-air-quality/ (Bath Fans)</p>	<p>REHAU Unlimited Polymer Solutions</p> <p>www.rehau.com/us-en (PEX Plumbing Products)</p>	<p>Rheem</p> <p>www.rheem.com (Water Heaters)</p>



Represented by New Century Sales:

<p>WEST MICHIGAN Michael Zago C (616) 293-2121 E mikez@newcenturysales.com</p>	<p>WEST MICHIGAN Rod Cox C (616) 706-1481 E rodc@newcenturysales.com</p>	<p>EAST MICHIGAN Todd Hiler C (513) 633-2609 E toddh@newcenturysales.com</p>	<p>EAST MICHIGAN Ross Beck C (734) 673-2119 E rossb@newcenturysales.com</p>
--	---	--	---

www.newcenturysales.com

FEB. MEETING STATS

THANK YOU TO OUR SPONSORS AND ATTENDEES!

SPONSORED BY

Balfrey & Johnston
JW Sales
Kennedy Industries

ATTENDEES

Syed Ashraf G.E.	Pamela Hartsell	Sean McIntosh G.E.
Tom Baranski	Dann Holmes	Michael Melaragni
Amanda Belcher	Jeff Jensen	Naveen Narayanan
George Bellman	John Johnson	Brenda Pesmark
Chip Bidigare	Hank Koppelo CPD	Barry Pines
Theresa Card	Paul Kurtzhals	Gerald Potapa
Joe Carreri	Gayatri Lekshminarayanan	David Rhodes
Larry D'Ascenzo	Jeremy Lewis	Ron Ross
George Dobrowitsky	Steve Lian	Manar Saied
Rachel Gendich	John Linton	Bob Taylor
Rufina Golshteyn	Anwar Maroki	Quinn Williamson
William Grayzar	Jeremy Martin	Cynthia Zatto
Brianne Hall	Dan McClary	

If you are interested in table top sponsorship,
please contact Kristin Simoneaux at: ksimoneaux@stantec.com
or call (248) 336-4760

FEBRUARY PHOTOS



Right: Sponsor, Steve Harkness (Kennedy Industries)



Left: Sponsor, Thomas Huck (JW Sales)



Right: Sponsor, George Johnston II (Balfrey & Johnston)

FEBRUARY PHOTOS



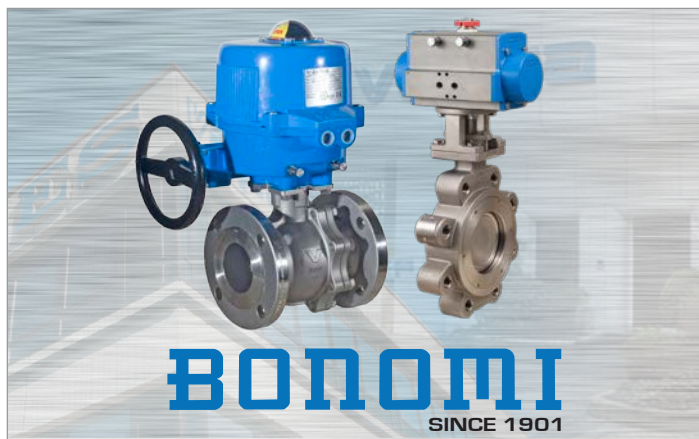
Presenter Gordon Roessler received a Certificate of Appreciation from ASPE EMC President Theresa Card



Cindy Zatto

V.E. SALES COMPANY, INC.

For additional information on Aquatherm, Highland Tank, MIRO and Bonomi products, please call Cindy Zatto with V. E. Sales, Inc. at 810.343.2713 or email cindyz@vesalesinc.com



BONOMI
SINCE 1901

Put more than a century of excellence in valve design and production to work for your company

More than 100 years ago, the Bonomi family began designing and manufacturing valves in Italy with the same passion for excellence as the winemakers that were our first customers.

Today, our low-torque ball valves, in sizes 1/4" to 56", and precision electric and pneumatic actuators are still made in Italy in our own advanced production facilities. And though our single-part number valve and actuator packages make valve automation more simple than ever, our engineering support is available world wide.

Call Bonomi. We'll put our history of flow-control excellence to work for your future.

www.bonominorthamerica.com • (704) 412-9031




Stop Battling Volatile Prices and Corrosion

Pricing for steel mechanical piping systems is rising significantly. Lightweight, stably priced Aquatherm polypropylene-random (PP-R) piping is connected by quick, reliable heat fusion. Plus, PP-R doesn't rust, scale, or corrode and it has a 60-year projected lifespan and many other benefits.

aquatherm
we've got a pipe for that

Learn more at aquatherm.com

PROBLEM:

RPZ inside a building
= flood damage
= design engineer liability

SOLUTION:

Install the RPZ inside a freeze protected enclosure located outside the building.

Want to learn more?

Visit the engineering blog pages at www.safe-t-cover.com/blog



SAFE-T-COVER
BY HYDROCOWL

safe-t-cover.com 800-245-6333

PROUDLY MADE IN THE USA
WWW.MIROIND.COM

THE SIMPLE, SMART SOLUTION TO ROOFTOP SUPPORTS



- ✓ Industry-leading 20 year warranty
- ✓ Designed to protect roof membrane by keeping PSI below 2.0
- ✓ Supports come pre-assembled and ready to install
- ✓ Supports available for duct, pipe, mechanical units, and more, as well as stair crossovers, ramps, and service platforms
- ✓ Professional assistance through the process, from take-off to final installation

MIRO
INDUSTRIES, INC.
ROOFTOP SUPPORT PRODUCTS

HOW CAN WE SUPPORT YOU?

INTRODUCING THE FREEZELESS UNDERCOVER WALL HYDRANT™



- Model 68 freezeless wall hydrant protected by an integral cover
- Drains automatically—even with hose attached
- Replaceable 16 gauge stainless steel cover flips down for easy access
- Tee key prevents unauthorized use
- Sleek, streamlined, low profile design

WOODFORD



WOODFORD MANUFACTURING COMPANY

Excellence. *Always.*

800.621.6032 • www.woodfordmfg.com

Represented by Burke Agency, Inc. • 248.669.2800

Woodford Model 68



Plumbing Engineer

THE OFFICIAL PUBLICATION OF ASPE

American Society of
Plumbing Engineers™

Viega System Solutions

Multiple materials, many solutions
One provider



For more information, contact:

Carl Petitt, Jr.
Technical Manager - Great Lakes
carl.petitt@viega.us
(614) 852-2691

Michael Norgan
District Sales Manager
michael.norgan@viega.us
(989) 415-2431

viega

www.viega.us

ASPE Mentoring Program

The Women of ASPE are excited to introduce ASPE's new Mentoring Program!

This program, which is available to all members of the Society, has been designed to connect ASPE members who have a particular skill set (mentor) with individuals (mentee) who are searching to acquire the same skills to develop and make progress toward their personal and professional goals.

Who Is a Mentor?

A mentor is someone who can help the mentee develop skills for success and long-range career planning, is able to be a good listener, is willing to share experiences and views, is willing to commit time and effort, provides an "open door" to questions and problems, points out both strengths and opportunities for improvement, and has a vested interest in the growth and development of their mentee.

Benefits to the mentor:

- Satisfaction in helping someone mature, progress, and achieve goals
- Meeting and sharing experiences with other mentors
- Personal ongoing support to help the mentee succeed
- Personal fulfillment through contribution to the Society and the individual

Who Is a Mentee?

Having a mentor can contribute to a successful and satisfying career. Without a mentor, that learning occurs mostly through trial and error. With a mentor, even experienced professionals can benefit from the experiences and expertise of someone who has withstood the trial and can help the mentee avoid the mistakes. Similarly, those new to the industry will discover that being a mentee shortens the learning curve for acquiring the skills and knowledge most critical to a fruitful career.

Benefits to the mentee:

- Discover new talents about yourself
- Career satisfaction
- Expand your personal network
- Maximize your strengths

aspe.org/aspe-mentoring-program



Code Study and Development Group of Southeastern Michigan

Item No.	Description	Price Each*	Order Date	
3200S15MI	2015 MI Plumbing Code	\$ 82.50		
3300S15MI	2015 MI Mechanical Code	\$ 82.50	PO Number	
3000S15MI	2015 MI Building Code	\$ 139.00	(If required)	
3100S15MI	2015 MI Residential Code	\$ 126.00		
3550S15MI	2015 MI Rehab for Existing Buildings	\$ 90.00		
3800S15MI	2015 MI Energy Code	\$ 48.00		
3210S15	2015 IPC with Commentary	\$ 104.50		
3310S15	2015 IMC with Commentary	\$ 104.50		
3600S15	2015 International Fuel Gas Code	\$ 82.50		
3610S15	2015 IFGC with Commentary	\$ 104.50		
3000S18	2018 International Building Code	\$ 130.00		
3200S18	2018 International Plumbing Code	\$ 82.50		
3300S18	2018 International Mechanical Code	\$ 82.50		
3600S18	2018 IFGC without Commentary	\$ 82.50		
3210S18	2018 IPC with Commentary	\$ 104.50		
3310S18	2018 IMC with Commentary	\$ 104.50		

- **Payment MUST accompany order / verify your preferred delivery method**
- **Credit cards, cash or company check accepted.**
- Dann Holmes - dholmes@nsf.org or (734) 214-6222
- If orders are to be mailed, call Dann and you will be advised of additional freight charges.

• **Make check payable to: Code Study & Development Group of SE Michigan**

Mailing Address: **Will be given upon placement of order**

Item No.	Description	Quantity	Unit Price	Item Total	Status
				\$ -	
				\$ -	
				\$ -	
				\$ -	
				\$ -	
				\$ -	
				\$ -	
				\$ -	
				\$ -	
Total books subject to incoming ICC Frgt charges		0			

Client Information		Order Details	
Company		Sub-Total	\$ -
Address		ICC Frgt	\$ -
City		USPS Frgt	\$ -
State		MI Sales Tax	\$ -
Zip-Code		Invoice Total	\$ -
Contact Information			
Attention		Received By: _____	
E-Mail			
Phone			

Check No. _____ or Cash _____
 Credit Card Approval No. _____

Date Paid _____

***Supersedes all pricing forms printed before November 04, 2019**

2019 Code Book Order Form

BALFREY & JOHNSTON, INC.

Manufacturers' Representatives
13050 Northend
Oak Park, MI 48237
Ph 313 864-2800 Fax 313 864-7219
George D. Johnston: george@balfrey-johnston.com
balfrey-johnston.com

KERR PUMP AND SUPPLY

Manufacturers' Representatives
12880 Cloverdale
Oak Park, MI 48237
Ph 248 543-3880 Fax 248 543-3236
Jamie Caporosso: jamie@kerrpump.com
kerrpump.com

BURKE AGENCY, INC.

Manufacturers' Representatives
2605 E. Oakley Park Road, Suite A,
Commerce Twp, MI 48390
Ph 248 669-2800 Fax 248 669-3310
Brian Burke, Peter Lapham, John Taylor
bburke@burkeagency.com
burkeagency.com

LOCHINVAR

High Efficiency Water Heaters and Boilers
45900 Port Street
Plymouth, MI 48170
Ph 734 454-4480 Fax 734 454-1790
Jason Loverich: jloverich@lochinvar.com
lochinvar.com

DALE PRENTICE COMPANY

Manufacturers' Representatives &
Application Engineering Solutions Provider
26511 Harding Avenue
Oak Park, MI 48237
Ph 800 536-4700 Fax 248 339-5559
Michael Cullen: mcullen@prenticeco.com
Mobile 248 302-5924
prenticeco.com

MAJOR/LOZUAWAY & ASSOCIATES, INC.

Manufacturers' Representatives
1117 W. Grand Blanc Rd.
Grand Blanc, MI 48439
Ph 810 234-1635 Fax 810 234-8389
Mike Ostrowski: moski@lozuaway.com
Mobile 810 287-6983

DAVE WATSON ASSOCIATES, INC.

Manufacturers' Representatives
1325 W. Beecher St.
Adrian, MI 49221
Ph 517 263-8988 Fax 517 263-2328
Rick Johnston: rjohnston@davewatson.biz
davewatson.biz

MEEK/BECK & ASSOC., INC.

Manufacturers' Representatives
11875 Belden Court
Livonia, MI 48150
Ph 734 458-2950 Fax 734 458-2953
Ross Beck: rossb@newcenturysales.com
meekbeck.com

**DIVERSIFIED SPEC. SALES, INC./
HOWLEY AGENCY SALES CO.**

Manufacturers' Representative
13261 Northend Ave.
Oak Park, MI 48237-3265
Michael J. Burdette: mburdette@dsshowley.com
Ph 248 398-2400 Fax 248 547-4905
diversifiedspec.com

NEW CENTURY SALES, INC.

Manufacturers' Representatives
1715 Traditional Dr.
Commerce Township, MI 48390
Ph 248 960-1147
Todd Hiler: toddh@newcenturysales.com
Mobile 513 633-2609
newcenturysales.com

HS/BUY VAN ASSOCIATES, INC.

Manufacturers' Representatives
56 S. Squirrel
Auburn Hills, MI 48326
Jarrett Armstrong, Bill Allen
Ph 888 472-8982 Fax 248 852-0298
info@hsbuyvan.com
hsbuyvan.com

PAULA. BAKER

ASSE Region #4 Director - Mid West
ASSE International
18927 Hickory Creek Drive, Suite 220
Mokena, IL 60448
Ph 313 399-3072 Fax 248 585-1437
Paul Baker: paul.baker@ualocal98jatc.org
www.asse-plumbing.org

PERFORMANCE ENGINEERING GROUP

Engineered Water Products
32955 Industrial Rd.
Livonia, MI 48150
Alan Deal: adeal@performanceengineering.com
Ph 734 266-5300 Fax 734 266-5310
performanceengineering.com

QUALITY WATER & AIR, INC.

Manufacturers' Representative
1402 Souter
Troy, MI 48083
Georgann Kummer, WBE
Ph 248 589-8010 Fax 248 589-8016
qualitywaterair@cs.com
qualitywaterair.com

PLUMB-TECH DESIGN & CONSULTING SERVICES

Plumbing-Piping-Fire Protection & HVAC System Design
Code & Standard Consulting-Investigations of system failures
3D CAD, BIM, Revit, Navisworks-Training Seminars-Tech. Reports
303 N. Monroe St., Monroe, MI 48162
Ron George, CPD, President: ron@plumb-techllc.com
Ph 734 322-0225 Mobile 734 755-1908
Plumb-TechLLC.com

R.L. DEPPMANN COMPANY

Manufacturers' Representatives
46575 Magellan Drive
Novi, MI 48377
Gerry Potapa Jr., CPD, **Paul Prentice**, LEED AP®
Mark Fine, LEED AP®, **Chris Lieder**
Ph 800 589-6120 Fax 248 354-3763
sales@deppmann.com
deppmann.com

PROGRESSIVE MARKETING & SALES INC.

Manufacturers' Representatives
7450 Hessler Dr. Rockford MI 49341
Dave Andrus 616-916-4140 andrus.progressive@gmail.com
Matt Johnson 517-614-1448 mjohnson.progressive@gmail.com
Doug Shaffer 248-648-0187 shaffer.progressive@gmail.com
progressivemarketingandsales.com

TAGGART-KNIGHT GROUP

Manufacturers' Representatives
37686 Enterprise Ct.
Farmington Hills, MI 48331
Gary O. Taggart
Ph 248 553-4388 Fax 248 553-4653
info@taggartco.com
taggartknight.com

PROGRESSIVE PLUMBING SUPPLY

Manufacturers' Representatives
31239 Mound Road
Warren, MI 48092
Ph 586 756-8662 Fax 586 756-9077
ppsupplyco.com

V. E. SALES COMPANY

V. E. Sales is your source for
the finest quality flow control solutions.
25200 Jefferson Ave.
St. Clair Shores, MI 48081
Thomas Van Egmond
Ph 586 774-7760 Fax 586 774-1490
vesalesinc.com

Expand
YOUR COMPANY
Place your ad here.

Meeting Location Map: Plumbing Training Center

1911 Ring Dr, Troy, MI 48083



2019-2020 ASPE EMC Board

President

Theresa Card, P.E., CPD,
LEED AP BD+C
Strategic Energy Solutions
4000 West 11 Mile Rd
Berkley, MI 48072
(248) 399-1900 ext 223
allethe@gmail.com

VP Technical

Kristin Simoneaux, P.E., CPD,
LEED AP
2338 Coolidge Hwy. #100
Berkley, MI 48072
(248) 336-4700
kristin.simoneaux@stantec.com

VP Legislative

William Grayzar, CPD
28150 Greenfield Rd.
Southfield, MI 48076
(248)569-1430 ext.333
bill@dsonline.com

VP Membership

Frank Tistle, CWS
Pentair
(248) 496-7553
frank.tistle@pentair.com

VP Education

Brianne Hall, P.E., CPD,
LEED AP BD+C, GGP
FTC&H
39500 Mac Kenzie Dr. Suite 100
Novi, MI 48377
(248) 324-4780
bnhall@ftch.com

Treasurer

Pam Hartsell, CPD
Strategic Energy Solutions
4000 W. Eleven Mile Rd.
Berkley, MI 48072
(248) 399-1900 x 222
Fax: 399-1901
p_hartsell@yahoo.com

Administrative Secretary

Hank Koppelo, CPD
Macomb Mechanical
6250 Nineteen Mile Road
Sterling Heights, MI 48314
(586) 737-9900
hkoppelo@macombmech.com

Corresponding Secretary

George Johnston II
13050 Northend Ave
Oak Park, MI 48237
(313) 864-2800 Fax: 864-7219
george2@balfrey-johnston.com

Chaper Affiliate/Liaison

Dann Holmes
NSF International
789 N. Dixboro Rd
Ann Arbor, MI 48105
(734) 214-6222
r2al@aspe.org

AYP Liaison

George Bellman
Strategic Energy Solutions
4000 W. Eleven Mile Rd.
Berkley, MI 48072
(248) 399-1900 x222
Gbellman72@gmail.com

Board Members

Mark Lamberson, CPD
81190 Church Street,
Memphis MI 48041-5401
(810) 392-5010
Mark.lamberson@limbachinc.com

Michael Melaragni, CPD
38958 Lapham Drive | Livonia, MI
48154-1014
(734) 591-9339
mjmelaragni@yahoo.com

Amanda Belcher, LEED GA
Strategic Energy Solutions
4000 W. Eleven Mile Rd.
Berkley, MI 48072
(248) 399-1900 Fax 399-1901
amandab@sesnet.com

Kari Rosteck
(313) 318-6555
kari.rostec@gmail.com

John Nussbaum, IPP, FASSE, FASPE



Advertising Opportunity Information

ASPE EMC News is published 9 times per year (September through May, plus one summer issue if feasible). Yearly advertising rates are \$200.00 per ad for members and \$250.00 for non-members. One time digital full page insert advertisements are \$250.00 for one issue, quarter page (9 issues) \$250.00 - half page (9 issues) and full page (9 issues) \$550.00. Please call Pam Hartsell at (248) 399-1900 x 222 for any questions regarding pricing of ads. Checks should be made payable to ASPE E. Mich. Chapter and mailed to the attention of Pam Hartsell, CPD at Strategic Energy Solution, 4000 W. Eleven Mile Rd. Berkley, MI 48072 . Circulation 400 - Distributed to: Engineers, Contractors, Inspectors, and other industry professionals in Michigan. For contributing articles and all digital artwork email to: Theresa Green, Newsletter Editor at: theresa.m.green@outlook.com

Table Top Sponsorship Information

ASPE Members

- \$200.00 for the 1st table per meeting/per vendor
- \$150.00 for each additional table per meeting/per vendor

Non-Members

- \$250.00 for the 1st table per meeting/per vendor
- \$200.00 for each additional table meeting/per vendor

If a vendor purchases table tops for 3 meetings during the year, a 4th meeting table top will be provided for free.

PAY FAST, PAY EASY
Secure Payments Accepted By

