

JAN - MEETING AGENDA

DATE:

TUESDAY, JAN. 10, 2023

WHERE:

Offsite Joint Meeting w/ ASPE and ASHRAE

Location: MSU Management Center
811 W. Square Lake Rd., Troy, MI

5:00 PM - 6:00 PM

Humidifier Distribution Methods and
Absorption Distance

6:00 PM - 6:30 PM

Social Hour

6:30 PM

Dinner

7:00 PM - 8:00 PM

The Importance of Humidity for Health
and The Types of Humidifiers

REGISTRATION REQUIRED

IN-PERSON: <https://www.eventbrite.com/e/joint-ashrae-detroitaspe-emc-january-2023-meeting-tickets-486833972517>

SEE INSIDE COVER FOR TABLE OF CONTENTS

William Grayzar, CPD, GPD, FASPE President of ASPE EMC



Happy New Year members of EMC-ASPE! I hope everyone enjoyed a wonderful holiday season with family and friends and some needed time off. Unfortunately, it is or will soon be time to get back to our normal routines once again and EMC-ASPE is no different. Here are some upcoming events.

Our upcoming meeting, on January 10, 2023, will be an offsite joint meeting with ASHRAE and will be held at the Michigan State University (MSU)

Management Education Center located at 811 Square lake Road, just east of Crooks road, in Troy MI. Matt Nowark (Director of Sales for the Steam and Condensate Division of Armstrong International) will present on *“Humidifier Distribution Methods”* and *“Absorption Distance and The Importance of Humidity for Health and The Types of Humidifiers”*. look forward to seeing you there!

There will not be a venting design class in January. The venting design classes will resume with our 4th venting class covering “Circuit Venting” on February 7th at the Plumbing Industry Training Center (PITC). This will be followed by a technical presentation reviewing upcoming code changes to the 2021 International Plumbing Code (IPC), 2021 International Fuel gas Code (IFGC and 2021 IMC and explore some of the rationale behind the changes.

Speaking of codes, according to the October meeting minutes from the State on Michigan Plumbing Board it appears the state of Michigan will be rescinding the 2018 Building and Mechanical Codes and will move forward with the 2021 cycle for these codes. The Michigan Plumbing Code (MPC) will be the only code issued by the State of Michigan for the 2018 code cycle. If you have a code question or comment, please feel free to reach out to anyone on the EMC-ASPE Board. If we can answer your questions we will and if not, perhaps we can point you to someone who can.

World Plumbing Day (WPD) March 11, 2023 will be here before you know it. Following the March 14 chapter meeting EMC-ASPE will be holding its annual NASPE racing event to celebrate WPD. If you want to participate in this event reach out to the EMC-Board to obtain a race car kit and get building. The kits are free to members of EMC-ASPE.

Continued on page 2

NOTICES

Contents

President's Report	1
Program	3
In The Know	4
VP Technical Report	5
Holiday Toy Drive	5
VP Membership Report	6
AYP Upcoming Event	7
ASPE EMC Golfing Event	8
Dec. Meeting Attendance	10
Dec. Meeting Photos	11 - 13
Mentorship	20
Code Study & Development Books	22
Line Card Sponsors	23 - 24

JANUARY BOARD MEETING

Virtual Online Meeting
Tuesday, 1/3/23, 4:30 PM

JANUARY PROGRAM

Offsite Joint Mtg with ASPE and AHRAE
Location: MSU Management Center
811 W. Square Lake Rd., Troy, MI
Tuesday, 1/10/23, 5:00 - 8:00 PM

ASPE IS ACCEPTING APPLICATIONS FOR THE ALFRED STEELE SCHOLARSHIP

Contact ASPE National for more informa-
tion at (847) 296-0002,
or email info@aspe.org

President's Report (cont. from page 1)

Bill Grayzar, CPD, GPD

Some other dates to be aware of are March 4, 2023, which is World Engineering Day and March 22, 2023 which is World Water Day. If you are thinking about taking the CPD Exam, registration for the April 10-21, 2023, exam is currently open. Also, keep a look out for upcoming ASPE Young Professionals (AYP) and Women of ASPE (WOA) events.

I look forward to seeing you on January 10 at the MSU Management Education Center and other future events.

Bill



SAVE THE DATES!

2023 TECH SYMPOSIUM
Bellevue, WA
9/28/23 - 10/1/23

**2024 CONVENTION &
EXPO**
Columbus, OH
10/18/24-10/23/24

JANUARY DESIGN SESSION

5:00-6:00 PM

TOPIC: Humidifier Distribution Methods and Absorption Distance

DESCRIPTON: Absorption distance varies according to the design of the humidifier distribution device and the air conditions within the duct. This session will go over the different types of steam humidifier distribution methods and their respective absorption distances.



Matt Nowak

PRESENTER: [MATT NOWAK](#)

Director of Sales for the Steam and Condensate Division of Armstrong International

Matt Nowak is the Director of Sales for the Steam and Condensate Division of Armstrong International. He has been with Armstrong for the last 19 years. He has a Bachelors degree in Mechanical Engineering from Western Michigan University. He Has been in various roles within the Humidification product line for Armstrong including Application Engineer, Product Engineer, Regional Sales Manager, and Sales Manager. He is a member of ASHRAE TC5.11 for Humidifying Equipment for 17 years, serving as Chair for 3 of those years. This group is responsible for SPC164 and Chapter 20 of the ASHRAE Handbook. He is also an active member of the AHRI - Humidifiers, responsible for the standard, AHRI 640.

JANUARY TECH SESSION

7:00-8:00 PM

TOPIC: The Importance of Humidity for Health and The Types of Humidifiers

DESCRIPTON: Most of us don't select a humidifier every day and situations and solutions can vary dramatically. Whether you're designing for an industrial, institutional or totally different environment there are many factors to consider. Additionally, humidity control is important to the indoor air quality of an occupied building, including germ control. This session will go over the health aspects of humidity levels in buildings as well as the different types of humidifiers you can use for different situations and applications.

PRESENTER: [MATT NOWAK](#)

See bio to left

Women
of
ASPE.

Engaging, retaining and advancing women in the industry.

Become involved, contact a board member or go to:

<https://www.aspe.org/membership-global-community/membership/special-interest-groups/women-of-aspe/>

New This Year:

Venting Classes - attend all 7 to earn a venting design manual.

About Registration and CEUs:

You will need to register using an Eventbrite link that will be in the email. This allows us to know how many people we can expect. We require sign in/sign out sheets and your CEUs will be submitted to national within 1 week of our event. It may take up to another 2 weeks for the CEUs to show in your ASPE Education log. The PITC does have guest protocols we will have to obey in order to meet there, so please follow all posted signage and procedures.

IN THE KNOW

EMC 45TH ANNIVERSARY HISTORY BOOK IS STILL AVAILABLE!

Cost for printed book - \$50, check or credit card accepted

Pick up @ SES or during a chapter meeting

FREE digital download on the ASPE EMC website.

TABLE TOP SPONSORSHIP PRICING

ASPE Members

- \$200.00 for the 1st table per meeting/per vendor
- \$150.00 for each additional table per meeting/per vendor

Non-Members

- \$250.00 for the 1st table per meeting/per vendor
- \$200.00 for each additional table meeting/per vendor

If a vendor purchases table tops for 3 meetings during the year, a 4th meeting table top will be provided for free.



Commercial Washrooms. Brought to Life.
HANDWASHING & DRYING | ACCESSORIES | PARTITIONS | LOCKERS

CUTTING-EDGE HANDWASHING TAKES SHAPE

The next generation WashBar raises your restroom to new heights by providing touch-free soap, water and drying in an edgy new design for an unforgettable handwashing experience. The single connection point to the sink provides an impressive design element and creates more open space for cleaning.

ADVANTAGES OF THE WASHBAR

- Floating design for a simple and clean aesthetic
- Single connection point to the sink for easier cleaning
- Eliminates the cost and mess of paper towels
- Icons and LED lights to visually orient users
- Smart sensor technology eliminates false activations
- WashBar and bowl work together to keep water in the basin
- Gallon soap capacity to reduce the number of replacements
- Captures soap and water activations for maintenance planning

The new WashBar WB2 is available with the Verge® LVQ basin in Evero® natural quartz, OmniDeck® 5010 in Terreon® solid surface, or pair with a Terreon solid surface or Evero natural quartz undermount basin with the deck or countertop of your choice.



AVAILABLE IN SIX BEAUTIFUL FINISHES



WEST MICHIGAN		WEST MICHIGAN		EAST MICHIGAN		EAST MICHIGAN	
Michael Zago		Rod Cox		Todd Hiler		Ross Beck	
D (248) 960-1147 x 107		D (248) 960-1147 x 116		D (248) 960-1147 x 106		D (248) 960-1147 x 115	
C (616) 293-2121		C (616) 706-1481		C (613) 633-2609		C (734) 673-2119	
E mikez@newcenturysales.com		E rodc@newcenturysales.com		E toddh@newcenturysales.com		E rossb@newcenturysales.com	

www.newcenturysales.com

ALL-IN-ONE WASHBAR



All the fundamentals of handwashing have been thoughtfully designed into Bradley's Innovative WashBar.

WASHBAR FEATURES

- CLEAN**
 - Touch-free activation
 - Low level LED Indicator
 - Gallon (3.8 L) soap capacity
 - Simply replace soap tank – no cleaning or refilling
 - Liquid and foam soap

- RINSE**
 - Touch-free activation
 - 0.5 GPM (1.9 LPM)
 - Ultra-high efficient 0.35 GPM (1.4 LPM) option where water conservation is a necessity

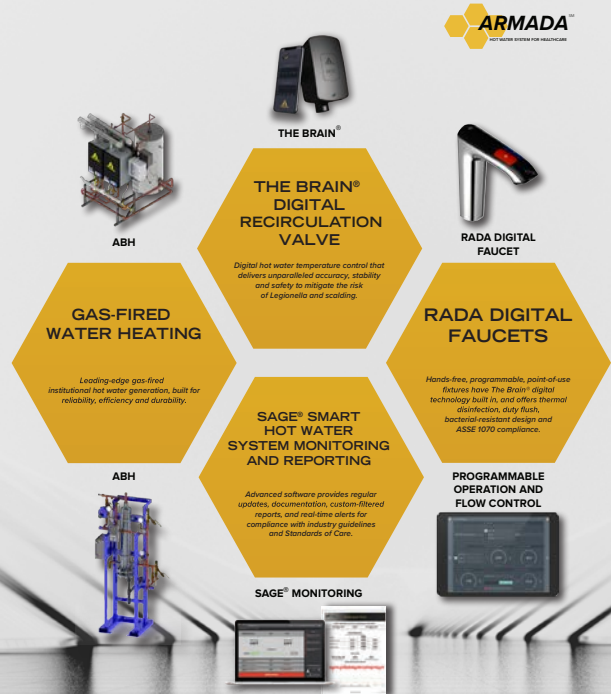
- DRY**
 - Touch-free activation
 - Heated air stream dries hands quickly and efficiently
 - Adjustable speed for quieter hand drying



bradleycorp.com
800 BRADLEY • (1 262 251 6000
W142 N9101 Fountain Boulevard
Menomonee Falls, WI USA 53051

bradleycorp.com/washbar

A TOTAL, STATE-OF-THE-ART HOT WATER SYSTEM, ENGINEERED TO DELIVER A SUPERIOR LEVEL OF USER SAFETY, INFECTION CONTROL AND COMPLIANCE, FROM MECHANICAL ROOM TO THE POINT OF USE.



Chip.bidigare@merloenergy.com
(586) 256 - 9822



VP Technical Report

Pam Hartsell, CPD, PMP



Happy New Year Eastern Michigan!

December was a lesson for us in dealing with unexpected change. Our second presenter was in a car accident and couldn't be with us, so we changed course and found another way to offer something of value to our attendees.

First, Rob and Mike presented Venting Session #3 – Horizontal Wet Vent and Vertical Wet Vent, and the Q&A moments were lively! The audience participation was fun and filled with laughter! After dinner we presented a pre-recorded webinar from ASPE National about fire protection submittals to keep us on topic, and the webinar was excellent! The meeting was a great success, despite the last-minute pivot. The only disappointing thing was that we were not able to record it. I'm bummed for those who missed out on both the education and entertainment.

Our January meeting will be our annual joint meeting with ASHRAE Detroit on the topic of humidification with two presentations by Matt Nowak, Director of Sales for the Steam and Condensate Division of Armstrong International. Note that this meeting will be at a different location. You can find all the details at the registration link, here: <https://www.eventbrite.com/e/joint-ashrae-detroitaspe-emc-january-2023-meeting-tickets-486833972517> This is a FREE meeting, so please spread the word and share the link!

I'm looking forward to seeing you the 10th! Please reach out to me if you have any questions about our Chapter, our meetings or the ASPE Organization.

Cheers to 2023!
Your Chapter VP Tech,
Pam Hartsell
vpt.aspe.emc@gmail.com

Holiday Toy Drive Provides a Car Load of Joy to Kids!



We saw incredible generosity from our members this season!

A CAR LOAD of toys was collected for the Methodist Children's Home in Redford, and the Ennis Center for Children in Port Huron!

Thank you ESD for sponsoring the toy drive! We are super proud to be members of the ESD Affiliate Council!

[#aspe](#) [#givingback](#) [#forthekids](#)



VP Membership Report

Josh Pedraja



Happy New Year, Eastern Michigan!

If anyone is new to ASPE or wants to know about more resources on the ASPE website, we will be hosting a webinar soon explaining how to navigate through the ASPE website, our Chapter Website and how

to navigate your personal login through ASPE! This webinar is intended to help new members (and existing members) get acquainted with the website and all the benefits it offers us as ASPE members!

Update on the Golf Outing: The committee is working out details on the sponsorships available and we are hoping to have everything finalized in the coming weeks so we can post what is available and start having teams to sign up! We are very excited to host our first annual golf outing for our Chapter!

As many of you have probably seen, I've been dubbed "Where's Waldo" on LinkedIn with all my travels. I am very fortunate to be able to travel as a part of my job, and it is a lot of fun to visit different chapters and meet with their members and chapter officers. One thing I have noticed though, is we really do have one of the best chapters in all of ASPE. I hear of all the struggles other chapters have with meeting places, attendance, membership levels and we here in Eastern Michigan should be proud with what we have for a chapter. We have volunteers to help with the Board each and every year, we have strong members committed to making this chapter the best and we are never short on speakers for our meetings. We truly have a GREAT chapter and one of the strongest; we ALL need to be proud of that!

Connect with and Follow us on LinkedIn (ASPE Eastern Michigan Chapter). We have up to date announcements and different posts that are educational, entertaining and informative on current events happening in our Plumbing World!

If you're a new member (or existing member), we'd LOVE to see you at our next Chapter Meeting!! As an attendee, you can earn CEU's, learn about Venting and other design topics and get to know more of your fellow engineers! Even if you're not a member, please reach out to us as we'd love to see you as our Guest. There are many wonderful benefits to ASPE!

SCHOLARSHIP UPDATE!! DEADLINE IS JANUARY 31ST!!

DON'T FORGET about the Alfred Steele Scholarship!! ASPE also offers scholarships to qualifying students up to \$3,000?!

Please check out the Alfred Steele scholarship at <https://www.aspe.org/membership-global-community/membership/alfred-steele-scholarship/> for more information and application. **The deadline for entry is January 31st.**

This scholarship is named in honor of Alfred Steele, PE, a long-time member of the American Society of Plumbing Engineers and a visionary and pioneer in advocating education and professional development for plumbing engineers and designers.

We highly recommend you apply for this scholarship as our very own Chapter Officer, Rachel Gendich (Treasurer) was a recipient of this scholarship and she has benefited tremendously from it! As former college students ourselves, we know that every scholarship helps and some are life changing!!

Members: If you know of a member that is currently struggling to afford dues, ASPE does offer a compassion wavier which can help a member out. Please reach out to me if this is a program that you would like to utilize.

If you are a supplier or manufacturer's rep that is visiting engineering firms again, please reach out to us if you know of a firm that has engineers that are not signed up with ASPE, so we can reach out to them!!

Being a member of ASPE has many benefits including:

- ✓ ASPE Plumbing Engineering Design Handbook
- ✓ Bi-monthly subscription to Plumbing Systems & Design magazine
- ✓ ASPEReport (in Plumbing Engineer magazine)
- ✓ Members Only ASPENet Access (includes access to ASPE Data Books chapters)
- ✓ Publications and Education Programs Discounts
- ✓ ASPE Biennial Convention and Exposition (even years)
- ✓ ASPE Biennial Technical Symposia (odd years)
- ✓ Technical Seminars and Workshops
- ✓ Access to Earn Continuing Education Units (CEUs)
- ✓ Technical Books and Manuals (specific to the profession of plumbing engineering).
- ✓ Professional Certification / Recertification
- ✓ Continuing Education Opportunities in Plumbing Engineer magazine
- ✓ Alfred Steele Scholarship Program
- ✓ Local Chapter Affiliation
- ✓ Monthly Chapter Meetings and Technical Seminar Opportunities
- ✓ Networking Opportunities with Plumbing Engineers Worldwide
- ✓ Leadership Opportunities (Board of Directors, Region Chairs, Chapter Officers, Committees)

AYP Liaison Report

Rachel Gendich



Hello Chapter members!

I hope your holidays were relaxing and enjoyable. The AYP program is being kicked off this year with a factory tour of Highland Tank in Clarkston followed by a Happy Hour. If you are not familiar with Highland Tank and their products check out their website: [https://](https://www.highlandtank.com/plant-tours/)

www.highlandtank.com/plant-tours/

UPCOMING AYP EVENT

ASPE YOUNG PROFESSIONALS present

FACTORY TOUR OF HIGHLAND TANK

Tour Date/Time: February 9th, 2:30pm-5:30pm
Happy Hour to follow the tour
Address: 4701 White Lake Rd, Clarkston, MI

Please RSVP to ayp.aspe.emc@gmail.com
If you have questions, feel free to reach out!
Your AYP Liaison, Rachel Gendich



SAVE THE DATE!



TUESDAY, JUNE 13, 2023



THE LINKS OF NOVI
NOVI, MICHIGAN



ETV *Platinum Plus*

ELECTRONIC TEMPERING VALVE



Designed for Critical Temperature DHW Application

- Maintains Set Point within +/- 2°F

Safeguard Against High Temperature Conditions

- Optional High Temp Limit Valve
- Alarm Output

Maintenance Free

- Stainless Steel Valve Body reduces Scale Buildup
- External Actuator Eliminates Gasket Maintenance



ETS AND ETS-LT

ELECTRONIC TEMPERING STATION

Pre-wired and Pre-Piped Assembly

- Contains ETV Platinum Plus
- Includes all Fittings, Isolation Valves

Wall Mounted and Floor Mounted

- Minimal Footprint
- Sizes from 3/4" to 4"



Conforms to the following:

ASSE 1017

California Lead Free Plumbing Law

CSA B 125.3 (NSF/ANSI 61 Section 8)



Major Lozuaway and Associates

Mike Ostrowski

1117 W. Grand Blanc Road

Grand Blanc, MI 48439

Phone: 810-287-6983

Email: moski@lozuaway.com

DECEMBER MEETING

THANK YOU TO OUR ATTENDEES!

Adrienne Bennett
Chip Bidigare
Theresa Card
Brian Chinery
Larry D'Ascenzo
Alan Deal
Dawn Fishhaber
Rachel Gendich

Rufina Golshteyn
Hayden Gosen
Andy Grajek
William Grayzar
Pamela Hartsell
Dann Holmes
John Johnson
William Johnson

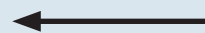
Mike Kennedy
Hank Koppelo
Michael Melaragni
Ossie Motton
Brenda Pesmark
Cindy Zatto

EDUCATION AND CREDENTIALING

CPD-Certified in Plumbing Design

CPDT-Certified Plumbing Design Technician

GPD-Green Plumbing Design



Click on the credential
to obtain more info.

DECEMBER MEETING PHOTOS



Rob Murley and Mike Melaragni present for the Venting Series.



Mike Melaragni (pictured on far left) presents for the Venting Series

DECEMBER MEETING PHOTOS



Webinar presented through ASPE National about fire protection submittals.



DECEMBER MEETING PHOTOS



Winners of the toilet seat and giftcard (from Kohler) are John Johnson and Andy Grajek, respectively.

ASPE Pipeline

News for the Plumbing System Design Industry

The only news site dedicated exclusively to ASPE, our members, and the plumbing engineering industry

COMMERCIAL POWER AND PERFORMANCE. BRADFORD WHITE QUALITY.



Your commercial customers need exceptional quality, performance, efficiency and reliability. Whether it's a hotel, restaurant, office building, school or industrial facility, Bradford White's proven commercial products deliver for your customers:

- **eF Series® Ultra High Efficiency Commercial Gas Water Heaters** offer up to 97% Thermal Efficiency. They feature BMS integration for remote monitoring for quicker, easier troubleshooting.
- **ElectriFLEX Series™ Commercial Electric Water Heaters** are field-convertible so a single model solves multiple installation requirements.
- **Brute® Series Condensing Hydronic Boilers & Volume Water Heaters** deliver modulation down to 20% of full fire (5:1 turndown) to serve a wide range of commercial water heating and space heating applications.

See our Full Commercial Line at
bradfordwhite.com/commercial

FOR THE PRO



Represented by: Burke Agency, Inc.

Replacing Your Water Heater Every Few Years is Not Our Business Plan



Conquest[®] condensing, gas-fired water heaters are constructed from AquaPLEX[®] duplex stainless steel so they're corrosion-resistant in potable water at any temperature. Available in 199-1000 MBH, Conquest provides even more BTUs in small spaces and fits through a standard 36-inch doorway. With a thermal efficiency of up to 96%, long product life and a 15-year tank and heat exchanger warranty, you can't afford not to have one.

Call R.L. Deppmann or visit our Monday Morning Minutes blog at deppmann.com for information on PVI Water Heaters
800.589.6120



800.784.8326 | pvi.com

TOPGOLF AUBURN HILLS: QuantumFlo Booster,
Beeco RPZ, & Beeco Automatic Control Valve



GM Flint Assembly Plant: Hubbell
Model EMV120-85-1.5SLA-A-XX Electric Tepad Water Heater



Velocity Boiler, Previously Crown Boiler

CRANE PUMPS & SYSTEMS

CRANE PUMPS & SYSTEMS



BOILERS & COMBINATION UNITS

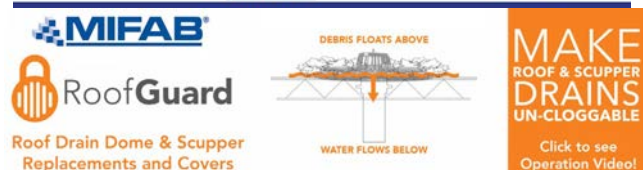
RIELLO

Energy For Life



QUALITY WATER & AIR: (248)589-8010

MIFAB PRODUCT LINE





EDUCATION



PUBLIC VENUES

COMMERCIAL OFFICES

T&S IS HERE >

T&S is proud to be a trusted name across a wide range of markets — staying at the forefront of today’s evolving industry and providing a vast selection of reliable solutions that meet required codes and compliances.

Learn more at tsbrass.com/markets.

Find us in



HEALTHCARE



T&S plumbing products represented in Eastern Michigan by: Diversified Spec Sales - 248-398-2400



New Century Sales, Inc.
Manufacturer's Representatives



COPPERPRESS® SYSTEM BENEFITS

- Size range from 1/2” to 4”
- Green visual application bands
- Consistent wall thickness on all products
- Leak before press systems
- Less equipment required
- Compatibility of fittings and tools

www.copperpress.com

Approvals & Certifications

- NFS ANSI/CAN 61
- UPC
- cUPC
- IPC
- IAPMO PS-117
- ICC-ES-PMG
- ASME B16.51



ISOTUBI USA

Stainless Steel Press Solutions

<https://isotubi-usa.com>

Represented by New Century Sales:

WEST MICHIGAN

Michael Zago
C (616) 293-2121

E mikez@newcenturysales.com

WEST MICHIGAN

Rod Cox
C (616) 706-1481

E rodcd@newcenturysales.com

EAST MICHIGAN

Todd Hiler
C (513) 633-2609

E todhd@newcenturysales.com

EAST MICHIGAN

Ross Beck
C (734) 673-2119

E rossb@newcenturysales.com

www.newcenturysales.com

MegaPress® G
Press safer.
Press bigger.



Connected in quality.

Quick, safe connections on large diameter gas lines.

Viega MegaPress(R)G requires no open flames or added cost of fire watch, so projects are safer and more profitable. Installers can secure gas pipe up to 4" in 16 seconds or less, saving 60-90% on labor costs. That's why professionals choose MegaPressG - the trusted press connection method approved for gas lines ½" to 4".

Carl Petitt
 Technical Manager
 (614) 852-2691
 carl.petitt@viega.us

Michael Norgan
 District Sales Manager
 (989) 415-2431
 michael.norgan@viega.us

ALL-IN-ONE SCALD PROTECTION



420-T Series

Now there's no need to install a thermostatic mixing valve below the sink. The new 420-T Series combines Chicago Faucets durability with integrated scald protection. The result is a solid, easy-to-install restroom faucet that complies with ASSE 1070 requirements. With the 420-T, everything you need to meet current building codes and protect users against scalding is built right into the faucet.

Visit chicagofaucets.com or call your local representative for more information.

Taggart-Knight Group
 248/553-4388
 info@taggartknight.com





New Century Sales, Inc.
Manufacturer's Representatives

EAST MICHIGAN
1715 Traditional Dr.
Commerce Township, MI 48390
P (248) 960-1147 F (248) 960-1149

WEST MICHIGAN
550 36th St. SE
Grand Rapids, MI 49548
P (616) 600-9660

 AMTROL Expansion Tanks www.amtrol.com	 BASCO Shower Doors www.bascoshowerdoor.com	 Bradley Washroom Solutions www.bradleycorp.com	 CALEFFI Hydronic Solutions Hydronic Accessories www.caleffi.com/usa/en-us	 COPPER PRESS ISOTUBI USA STAINLESS STEEL SOLUTIONS Plumbing Fittings www.copperpress.com www.isotubi-usa.com
 FAIRMONT designs Furniture Inspiration Bath Furniture www.fairmontdesigns.com	 FIAT PRODUCTS Specialty Products & Plumbing Fixtures www.fiatproducts.com	 General Wire Spring Company Sewer Cleaning Machines www.drainbrain.com	 genova PVC Products www.genovaproducts.com	 IBC Better Boilers www.ibcboiler.com
 MATCO NORCA Valves and Fittings www.matco-norca.com	 MYERS Water and Waste Pumps www.femyers.com	 Oasis Fiberglass & Acrylic Tub & Showers www.oasisbath.com	 OASIS Oasis Water Coolers www.oasiscoolers.com	
 OATEY SCS Supply Chain Services  www.oatey.com	 Panasonic USA Bath Fans https://na.panasonic.com/us/home-living-solutions/ventilation-indoor-air-quality/	 PEXGUN AUTOMATIC PEX PIPE TIE TOOL Pipe Installation Tools https://pexgun.com/		
 REHAU Unlimited Polymer Solutions PEX Plumbing Products www.rehau.com/us-en	 RHEEM RUUD Water Heaters www.rheem.com www.ruud.com	 STRASSER woodenworks Bathroom Vanities & Cabinets www.strasserwood.com	 TURBOTORCH BRAZING Brazing & Soldering https://www.esabna.com/us/en/products/gas-equipment/brazing-and-soldering/index.cfm	
 StanleyBlack&Decker  DEWALT www.dewalt.com  IRWIN TOOLS www.irwin.com  LENOX www.lenoxtools.com		 LIXIL Link to Good Living  American Standard www.americanstandard-us.com  DXV www.dxv.com  GROHE www.grohe.us/en_us		

www.newcenturysales.com

ASPE Mentoring Program

The Women of ASPE are excited to introduce ASPE's new Mentoring Program!

This program, which is available to all members of the Society, has been designed to connect ASPE members who have a particular skill set (mentor) with individuals (mentee) who are searching to acquire the same skills to develop and make progress toward their personal and professional goals.

Who Is a Mentor?

A mentor is someone who can help the mentee develop skills for success and long-range career planning, is able to be a good listener, is willing to share experiences and views, is willing to commit time and effort, provides an "open door" to questions and problems, points out both strengths and opportunities for improvement, and has a vested interest in the growth and development of their mentee.

Benefits to the mentor:

- Satisfaction in helping someone mature, progress, and achieve goals
- Meeting and sharing experiences with other mentors
- Personal ongoing support to help the mentee succeed
- Personal fulfillment through contribution to the Society and the individual

Who Is a Mentee?

Having a mentor can contribute to a successful and satisfying career. Without a mentor, that learning occurs mostly through trial and error. With a mentor, even experienced professionals can benefit from the experiences and expertise of someone who has withstood the trial and can help the mentee avoid the mistakes. Similarly, those new to the industry will discover that being a mentee shortens the learning curve for acquiring the skills and knowledge most critical to a fruitful career.

Benefits to the mentee:

- Discover new talents about yourself
- Career satisfaction
- Expand your personal network
- Maximize your strengths

For more information click below:

<https://connect.aspe.org/aspe-mentor-match/mentoring>



BRANDS WE REPRESENT



BRANDS WE DISTRIBUTE



Natural Gas / Propane / Electric
85,000 to 10,000,000 BTU's
- ALSO -
Holby Thermostatic Mixing Valves



Jamie Caporosso: jamie@kerrpump.com
12880 Cloverdale, Oak Park, MI 48237
Ph.: (248) 543-3880 Fax: (248) 543-3236

Liquid Pumps
Vacuum Pumps
Heat Exchangers
Blowers
Related Equipment
and Accessories

Sales • Service • Repair



AURORA FIRE PUMPS

Compact Fire Pump Systems

- UL Listed/FM Approved Aurora Fire Pump
- UL Listed/ FM Approved Fire Pump Controller
- Capacities of 50-750 Gpm.
- Pressures of 40-160 Psi.
- Aurora Model PVM (close coupled to an ODP motor.)

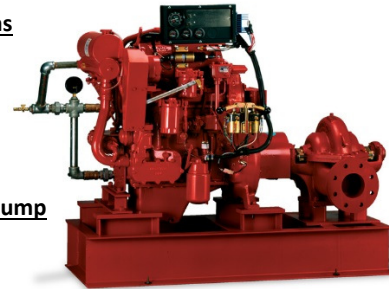
Vertical Split Case Electric Drive Fire Pump

- Electric Driven
- For Commercial, Industrial and Marine use only.
- UL Listed/ FM Approved/NFPA-20 Design

Horizontal Split Case Diesel Drive Fire Pump

- Diesel and Electric driven available.
- Flows at 250 gpm to 5000 gpm.
- Pressures available up to 490 Psi.

PLEASE INQUIRE TO KERR PUMP FOR PRICING,
SELECTIONS, OR TESTING ON EXISTING.
ALSO, PLEASE SEE www.aurorapump.com



Michigan's Oldest Supplier of Pumps and Process Equipment - 1905

BALFREY & JOHNSTON, INC.

Manufacturers' Representatives
 13050 Northend
 Oak Park, MI 48237
 Ph 313 864-2800 Fax 313 864-7219
George D. Johnston: george@balfrey-johnston.com
 balfrey-johnston.com

J.W. SALES, INC.

Manufacturers' Representative
 1570 E. Highwood
 Pontiac, MI 48340
 O: 248.745.8590 F: 248.745.0889
Thomas Huck: thomash@jwsalesinc.net
 C: 248-602-1575
Michael Fedorinchik: mikef@jwsalesinc.net
 JWsalesinc.net

BURKE AGENCY, INC.

Manufacturers' Representatives
 2605 E. Oakley Park Road, Suite A,
 Commerce Twp, MI 48390
 Ph 248 669-2800 Fax 248 669-3310
Brian Burke, Peter Lapham, John Taylor
 bburke@burkeagency.com
 burkeagency.com

KERR PUMP AND SUPPLY

Manufacturers' Representatives
 12880 Cloverdale
 Oak Park, MI 48237
 Ph 248 543-3880 Fax 248 543-3236
Tyler Palchak: tpalchak@kerrpump.com
 Direct: 248-826-9414
 kerrpump.com

DALE PRENTICE COMPANY

Manufacturers' Representatives &
 Application Engineering Solutions Provider
 26511 Harding Avenue
 Oak Park, MI 48237
 Ph 800 536-4700 Fax 248 339-5559
Michael Cullen: mcullen@prenticeco.com
 Mobile 248 302-5924
 prenticeco.com

LOCHINVAR

High Efficiency Water Heaters and Boilers
 45900 Port Street
 Plymouth, MI 48170
 Ph 734 454-4480 Fax 734 454-1790
Jason Loverich: jloverich@lochinvar.com
 lochinvar.com

DAVE WATSON ASSOCIATES, INC.

Manufacturers' Representatives
 1325 W. Beecher St.
 Adrian, MI 49221
 Ph 517 263-8988 Fax 517 263-2328
Rick Johnston: rjohnston@davewatson.biz
 davewatson.biz

MAJOR/LOZUAWAY & ASSOCIATES, INC.

Manufacturers' Representatives
 1117 W. Grand Blanc Rd.
 Grand Blanc, MI 48439
 Ph 810 234-1635 Fax 810 234-8389
Mike Ostrowski: moski@lozuaway.com
 Mobile 810 287-6983
Bill Campbell, PE: bill@lozuaway.com
 Mobile 810-287-0029

**DIVERSIFIED SPEC. SALES, INC./
HOWLEY AGENCY SALES CO.**

Manufacturers' Representative
 13261 Northend Ave.
 Oak Park, MI 48237-3265
Brendan Burdette: bburdette@dsshowley.com
 Ph 248 398-2400 Fax 248 547-4905
 diversifiedspec.com

NEW CENTURY SALES, INC.

Manufacturers' Representatives
 1715 Traditional Dr.
 Commerce Township, MI 48390
 Ph 248 960-1147
Ross Beck: rossb@newcenturysales.com
 Mobile 734 673-2119
Todd Hiler: toddh@newcenturysales.com
 Mobile 513 633-2609
 newcenturysales.com

HS/BUY VAN ASSOCIATES, INC.

Manufacturers' Representatives
 56 S. Squirrel
 Auburn Hills, MI 48326
Jarrett Armstrong
 Ph 888 472-8982 Fax 248 852-0298
 info@hsbuyvan.com
 hsbuyvan.com

PAULA. BAKER

ASSE Region #4 Director - Mid West
 ASSE International
 18927 Hickory Creek Drive, Suite 220
 Mokena, IL 60448
 Ph 313 399-3072 Fax 248 585-1437
Paul Baker: paul.baker@ualocal98jatc.org
 www.asse-plumbing.org

PERFORMANCE ENGINEERING GROUP

Engineered Water Products
32955 Industrial Rd.
Livonia, MI 48150

Alan Deal: adeal@performanceengineering.com
Ph 734 266-5300 Fax 734 266-5310
performanceengineering.com

R.L. DEPPMANN COMPANY

Manufacturers' Representatives
46575 Magellan Drive
Novi, MI 48377

Gerry Potapa Jr., CPD, Paul Prentice, LEED AP®
Mark Fine, LEED AP®, Chris Lieder
Ph 800 589-6120 Fax 248 354-3763
sales@deppmann.com
deppmann.com

PROGRESSIVE PLUMBING SUPPLY

Wholesale Distributor
31239 Mound Road
Warren, MI 48092

Ph 586 756-8662 Fax 586 756-9077
ppsupplyco.com

Locations: Warren, Detroit, Mt. Clemens, and Oxford

TAGGART-KNIGHT GROUP

Manufacturers' Representatives
37686 Enterprise Ct.
Farmington Hills, MI 48331

Gary O. Taggart
Ph 248 553-4388 Fax 248 553-4653
info@taggartco.com
taggartknight.com

QUALITY WATER & AIR, INC.

Manufacturers' Representative
1402 Souter
Troy, MI 48083

Georgann Kummer, WBE
Ph 248 589-8010 Fax 248 589-8016
qualitywaterair@cs.com
qualitywaterair.com

V. E. SALES COMPANY

V. E. Sales is your source for
the finest quality flow control solutions.
25200 Jefferson Ave.
St. Clair Shores, MI 48081

Thomas Van Egmond
Ph 586 774-7760 Fax 586 774-1490
vesalesinc.com



**INCREASE
EXPAND
GROW
MULTIPLY**

Place your ad here and expand your company!



2022-2023 ASPE EMC Board

President

William Grayzar, CPD
28150 Greenfield Rd.
Southfield, MI 48076
(248)569-1430 ext.333
bill@dsdonline.com
president.aspe.emc@gmail.com

VP Technical

Pam Hartsell, CPD, PMP
Strategic Energy Solutions
4000 W. Eleven Mile Rd.
Berkley, MI 48072
(248) 399-1900 x 222
Fax: 399-1901
vpt.aspe.emc@gmail.com

VP Legislative

Ryan Lyle
Director of Training PITC
1911 Ring Drive
Troy, MI 48083-4229
248-585-1435 ext. 122
Ryan.Lyle@ualocal98jtc.org

VP Membership

Josh Pedraja
Toledo, OH | Central USA
4610 Entrance Drive, Suite H
Charlotte, NC 28273
616-307-5968
josh.pedraja@pattonsmmedical.com

VP Education

Kristin Simoneaux, P.E., CPD,
LEED AP
2338 Coolidge Hwy. #100
Berkley, MI 48072
(248) 336-4700
kristin.simoneaux@stantec.com

Treasurer

Rachel Gendich
Strategic Energy Solutions
4000 W. Eleven Mile Rd.
Berkley, MI 48072
(248) 399-1900
Fax: 399-1901
treasurer.aspe.emc@gmail.com

Administrative Secretary

George Johnston II
13050 Northend Ave
Oak Park, MI 48237
(313) 864-2800 Fax: 864-7219
george2@balfrey-johnston.com

Corresponding Secretary/ VP Social Media

Josh Pedraja
Toledo, OH | Central USA
4610 Entrance Drive, Suite H
Charlotte, NC 28273
616-307-5968
josh.pedraja@pattonsmmedical.com

Chaper Affiliate/Liaison

Chip Bidigare
23350 15 Mile Rd.
Berkley Township, MI 48035
586-755-3110 x 5938
chip.bidigare@merloenergy.com

AYP Liaison

Rachel Gendich
Strategic Energy Solutions
4000 W. Eleven Mile Rd.
Berkley, MI 48072
(248) 399-1900
Fax: 399-1901

WOA Liaison

Theresa Card, P.E., CPD,
LEED AP BD+C
Strategic Energy Solutions
4000 West 11 Mile Rd
Berkley, MI 48072
(248) 399-1900 ext 223
allethe@gmail.com

Directors

Michael Melaragni, CPD
38958 Lapham Drive | Livonia,
MI 48154-1014
(734) 591-9339
mjmelaragni@yahoo.com

Theresa Card, P.E., CPD,
LEED AP BD+C
Strategic Energy Solutions
4000 West 11 Mile Rd
Berkley, MI 48072
(248) 399-1900 ext 223

Brianne Hall, P.E., CPD,
LEED AP BD+C, GGP
FTC&H
39500 Mac Kenzie Dr. Suite 100
Novi, MI 48377
(248) 324-4780
bhall@fishbeck.com

Dann Holmes
(248) 921-0582
r2al@aspe.org



SPONSOR ADVERTISING OPPORTUNITY INFORMATION

ASPE EMC News is published 9 times per year - September through May.

Yearly advertising for a Business Card ad, which also includes a full Line Card in our sponsors guide:
\$200.00 for members and \$250.00 for non-members.

Graphic Ads - Full Year (9 Issues): Quarter page - \$250.00 ○ Half page - \$350.00 ○ Full page - \$550.00

Checks should be made payable to ASPE EMC and mailed to: Rachel Gendich – Treasurer
c/o Strategic Energy Solution, 4000 W. Eleven Mile Rd., Berkley, MI 48072

Email all digital artwork to: Theresa Green, Newsletter Editor at: theresa.m.green@outlook.com

Circulation 260 - Distributed to: Engineers, Contractors, Inspectors, and other industry professionals in Michigan.

PAY FAST, PAY EASY
Secure Payments Accepted By

