

## JAN - MEETING AGENDA

**DATE:**

**TUESDAY, JANUARY 11, 2022**

**WHERE:**

*This will be a **IN-PERSON ONLY**  
**Joint Meeting** w/ASHRAE and ASPE*

**Petruzzello's Banquet and  
Conference Center**

**6950 Rochester Rd, Troy, MI 48085**

**5:00 PM - 6:00 PM**

**Tech Session #1**

**6:00 PM - 7:00 PM**

**Social Hour and Dinner**

**7:00 PM - 7:15 PM**

**ASHRAE & ASPE Chapter Meetings**

**7:15 PM - 8:00 PM**

**Tech Session #2**

**REGISTRATION REQUIRED**

**IN-PERSON:** <https://www.eventbrite.com/e/january-11th-ashrae-aspe-joint-chapter-meeting-tickets-228904488487>

SEE INSIDE COVER FOR TABLE OF CONTENTS

## From Pam Hartsell, CPD, PMP President of ASPE EMC



Happy New Year Eastern Michigan!

Our toy donation drive, in partnership with ESD, was a fun and rewarding experience! Thanks to everyone who helped us give back in support of local kids in need. We actually collected diapers and wipes along with the toys, but the favored donation was definitely Legos! Very Cool!

Our December meeting on Fire Protection was insightful and engaging. Karl Wiegand of Victaulic teased the crowd with slightly abbreviated versions of his presentations on Fire Pumps, Standpipes and Dry Systems, including the use of nitrogen for corrosion mitigation. We are definitely looking forward to taking deeper dives with Karl on these topics in the future.

Our January meeting will be a fantastic program on the Code Adoption process and a look at the updates in the 2018 Michigan Plumbing code. We're fortunate to have two heavy hitters from the State of Michigan to share their knowledge on these topics. Code books will also be available for sale during the meeting, so if you're in need of a copy, reach out to any board member or see Dann Holmes that evening.

Fantastic news that our chapter's offer to host a NASPE race at Convention in Indianapolis was accepted! If you've been around for a while, you know that EMC Past President Bill Grayzar is a veteran pinewood derby race official among the Scout Packs and Troops in Southeastern Michigan. He knows how to run an exciting race with precision and efficiency. We are really fortunate to have this kind of talent in our midst and I cannot wait to be a part of the "EMC Pit Crew"!

The dates for the 2022 Convention have been announced and we want you there! Start planning now to join your fellow chapter and society members in Indy next September! More details are available at [aspe.org](http://aspe.org).

Wishing you all the best in the coming year. May you and your loved ones enjoy happiness, health and success in 2022!

Your Chapter President,

Pam Hartsell  
[president.aspe.ec@gmail.com](mailto:president.aspe.ec@gmail.com)

**Contents**

President's Report ..... 1  
 2022 ASPE Convention & Expo ..... 2  
 Program ..... 3  
 In The Know ..... 4  
 EMC 45th Anniv. History Book ..... 5  
 VP Technical Report ..... 6  
 VP Membership Report ..... 8 - 9  
 Job Posting ..... 10 - 11  
 December Attendees ..... 16  
 Photos ..... 16 - 17  
 Code Study & Development Books ... 20  
 Mentoring Program ..... 22  
 Line Card Sponsors ..... 23 - 24

**JANUARY BOARD MEETING**

Virtual Online Meeting 1/4/2022 @ 4:30 PM

**JANUARY PROGRAM**

**IN-PERSON ONLY** Meeting 1/11/2022, 5:00 - 8:00 PM

This is a joint meeting with ASHRAE and ASPE

**Location: Petruzzello's Banquet and Conference Center**

6950 Rochester Rd, Troy, MI 48085

Located at the SE corner of Rochester Rd and South Blvd

**ASPE IS ACCEPTING APPLICATIONS FOR THE ALFRED STEELE SCHOLARSHIP**

Contact ASPE National for more information at (847) 296-0002, or email [info@aspe.org](mailto:info@aspe.org)



**ASPE**  
 Convention &  
 Expo **2022**  
**Save the date!**  
**09.16-21.22**  
 INDIANAPOLIS

---

## **JANUARY TECH SESSION #1**

**5:00-6:00 PM**

### **TOPIC: New 2018 MI Plumbing Code**

This session will address the new Michigan Plumbing Code that went into effect September 15, 2021.

Presenter: **Matthew A. Gay**,  
Lead Mechanical Inspector for the State of Michigan  
Bureau of Construction Codes

## **JANUARY TECH SESSION #2**

**7:15-8:00 PM**

### **TOPIC: MI Code Promulgation Process and Schedule**

This session will discuss the general code promulgation process and schedule, notably as they pertain to the forthcoming Energy and Mechanical Codes.

Presenter: **Jonathon Paradine**, Chief of the Building and Permits Division for the State of Michigan Bureau of Construction Codes



## **About Registration and CEUs:**

If you are attending virtually: there is a link to register via the ASPE Education page. Please follow all directions. Using this platform for virtual meetings allows us to streamline the CEU process. So all attendees that plan to join virtually, need to register via the corresponding ASPE Education link. Our meetings will also be listed on the ASPE Education calendar, so you can find registration info there as well. <https://education.aspe.org/>

There is also a passcode that needs to be entered for the virtual meetings now. This passcode is in the email invite as well as listed in the webinar instructions.

If you will attend in person (when we can offer this option): You will need to register using an Eventbrite link that will be in the email. This allows us to know how many people we can expect in person. Thus, allowing us to make sure we maintain the indoor gathering limits imposed by the Governor, and also order enough food for all. For those that attend in person, we will still require sign in/sign out sheets and your CEUs will be submitted to national within 1 week of our event. It may take up to another 2 weeks for the CEUs to show in your ASPE Education log. The PITC does have guest protocols we will have to obey in order to meet there, so please follow all posted signage and procedures.

# IN THE KNOW

## EMC 45TH ANNIVERSARY HISTORY BOOK NOW AVAILABLE FOR ORDER!

Available in time for the holidays. \$50 Each

Check or Credit Card Accepted

Pick up @ SES or during a Hybrid Chapter Meeting

FREE digital download on the ASPE EMC website.

## TABLE TOP SPONSORSHIP PRICING

ASPE Members

- \$200.00 for the 1st table per meeting/per vendor
- \$150.00 for each additional table per meeting/per vendor

Non-Members

- \$250.00 for the 1st table per meeting/per vendor
- \$200.00 for each additional table meeting/per vendor

If a vendor purchases table tops for 3 meetings during the year, a 4th meeting table top will be provided for free.



A TOTAL, STATE-OF-THE-ART HOT WATER SYSTEM, ENGINEERED TO DELIVER A SUPERIOR LEVEL OF USER SAFETY, INFECTION CONTROL AND COMPLIANCE, FROM MECHANICAL ROOM TO THE POINT OF USE.

**ABH**

**GAS-FIRED WATER HEATING**

Leading-edge gas-fired institutional hot water generation, built for reliability, efficiency and durability.

**THE BRAIN®**

**THE BRAIN® DIGITAL RECIRCULATION VALVE**

Digital hot water temperature control that delivers unparalleled accuracy, stability and safety to mitigate the risk of Legionella and scalding.

**RADA DIGITAL FAUCET**

**RADA DIGITAL FAUCETS**

Hands-free, programmable, point-of-use fixtures have The Brain® digital technology built in, and offers thermal disinfection, duty flush, bacterial-resistant design and ASSE 1070 compliance.

**ABH**

**PROGRAMMABLE OPERATION AND FLOW CONTROL**

**SAGE® MONITORING**

**SAGE® SMART HOT WATER SYSTEM MONITORING AND REPORTING**

Advanced software provides regular updates, documentation, custom-filtered reports, and real-time alerts for compliance with Industry guidelines and Standards of Care.

Chip.bidigare@merloenergy.com  
(586) 256-9822

**Bradley** Commercial Washrooms. Brought to Life.  
HANDWASHING & DRYING | ACCESSORIES | PARTITIONS | LOCKERS

### CUTTING-EDGE HANDWASHING TAKES SHAPE

The next generation WashBar raises your restroom to new heights by providing touch-free soap, water and drying in an edgy new design for an unforgettable handwashing experience. The single connection point to the sink provides an impressive design element and creates more open space for cleaning.

### ADVANTAGES OF THE WASHBAR

- Floating design for a simple and clean aesthetic
- Single connection point to the sink for easier cleaning
- Eliminates the cost and mess of paper towels
- Icons and LED lights to visually orient users
- Smart sensor technology eliminates false activations
- WashBar and bowl work together to keep water in the basin
- Gallon soap capacity to reduce the number of replacements
- Captures soap and water activations for maintenance planning

The new WashBar WB2 is available with the Verge® LVQ basin in Evero® natural quartz, OmniDeck® 5010 in Terreon® solid surface, or pair with a Terreon solid surface or Evero natural quartz undermount basin with the deck or countertop of your choice.

Verge LVQ-Series with WashBar WB2

OmniDeck with WashBar WB2

Evero undermount basin with WashBar WB2

### AVAILABLE IN SIX BEAUTIFUL FINISHES

**Represented by New Century Sales:**

WEST MICHIGAN	WEST MICHIGAN	EAST MICHIGAN	EAST MICHIGAN
Michael Zago D (248) 960-1147 x.107 C (616) 293-2121 E mikez@newcenturysales.com	Rod Cox D (248) 960-1147 x.116 C (616) 706-1481 E rodc@newcenturysales.com	Todd Hiller D (248) 960-1147 x.106 C (616) 633-2609 E toddh@newcenturysales.com	Ross Beck D (248) 960-1147 x.115 C (734) 673-2119 E rossb@newcenturysales.com

[www.newcenturysales.com](http://www.newcenturysales.com)

### ALL-IN-ONE WASHBAR

All the fundamentals of handwashing have been thoughtfully designed into Bradley's innovative WashBar.

#### WASHBAR FEATURES

- CLEAN**
  - Touch-free activation
  - Low level LED Indicator
  - Gallon (3.8 L) soap capacity
  - Simply replace soap tank – no cleaning or refilling
  - Liquid and foam soap
- RINSE**
  - Touch-free activation
  - 0.5 GPM (1.9 LPM)
  - Ultra-high efficient 0.35 GPM (1.4 LPM) option where water conservation is a necessity
- DRY**
  - Touch-free activation
  - Heated air stream dries hands quickly and efficiently
  - Adjustable speed for quieter hand drying

**bradleycorp.com**  
 800 BRADLEY +1 262 251 6000  
 W142 N9101 Fountain Boulevard  
 Menomonee Falls, WI USA 53051  
[bradleycorp.com/washbar](http://bradleycorp.com/washbar)

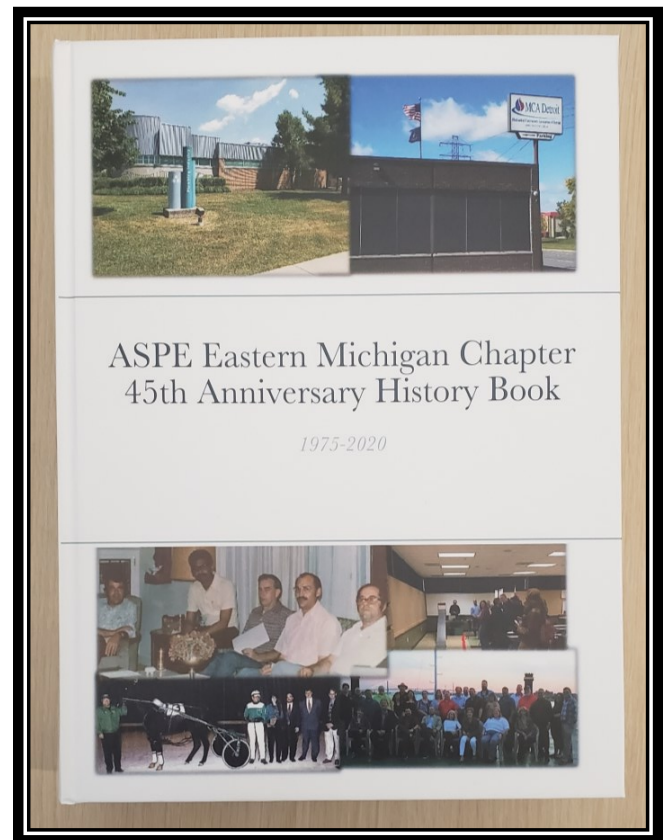
# EMC 45<sup>TH</sup> ANNIVERSARY HISTORY BOOK IS AVAILABLE TO ORDER NOW!

*Available in time for the holidays*

\$50 EACH

Check or Credit Card  
Accepted

Pick-up @ SES or  
during a Hybrid  
Chapter Meeting



Contact Theresa Card for orders:  
[vpt.aspe.emc@gmail.com](mailto:vpt.aspe.emc@gmail.com) or 248.988.4708



ASPE EASTERN MICHIGAN CHAPTER  
[WWW.ASPE.ORG/EASTERN-MICHIGAN](http://WWW.ASPE.ORG/EASTERN-MICHIGAN)

# VP Technical Report

Theresa Card, P.E., CPD, LEED AP BD+C



Hello from your VP Tech!

Well, we made it through another calendar year. Unfortunately, Covid is still wreaking havoc on events and people's lives. I hope you all had a good Holiday and I really hope we get to see you in person at the January joint meeting with ASHRAE. See below for more information.

Reminder we are always looking to get some new blood onto the board- if you are interested, please let any current board member know!

## Past Meeting Recordings

Below you will find the link to this program year's recorded meetings. If you would like copies of the pdf handouts, please email me to let me know. I apologize, but no CEUs can be provided for watching meeting recordings. Please note you will likely have to copy the text below and paste into a browser to see the videos – as we have found some cannot click the links directly from the newsletter itself.

If you have missed any of the meetings from the 2019-2020 Program Year you can email me, and I will send you the link or you can look at past newsletters from last year.

### **September 2021 Presentations Recordings: Right Sizing Plumbing: An Overview and Plumbing 101**

- <https://youtu.be/B2jR9wO7JHM>

### **October 2021 Presentation Recording: Metered Flow vs Traditional Sizing and Utility Rebates Panel Discussion**

- <https://youtu.be/mXxpKw7UCrs>

### **November 2021 Presentation Recording: Right Sizing Water Heaters and Submersible Pumps**

- <https://youtu.be/mXxpKw7UCrs>

### **December 2021 Presentation Recording: Fire Protection – Standpipes, Fire Pumps and Dry Systems**

- <https://youtu.be/Xr1jWJ3qnfw>

### **January Program – Joint ASHRAE and ASPE Program with Code Officials from the BCC!!**

This year's joint meeting with ASHRAE will take place in person only at:

Petruzzello's Banquet and Conference Center

6950 Rochester Rd, Troy, MI 48085

Located at the SE corner of Rochester Rd and South Blvd

The meeting format will be a little different and the agenda will be as follows:

5:00 PM – 6:00 PM = Tech Session I

6:00 PM – 7:00 PM = Social Hour & Dinner

7:00 PM - 7:15 PM = ASHRAE & ASPE Chapter Meetings

7:15 PM - 8:00 PM = Technical Session 2

We have two amazing speakers from the Michigan Bureau of Construction Codes coming to talk to us! Technical session 1 will cover the new 2018 MI Plumbing Code that went into effect September 15th. The speaker will be Matthew Gay, Lead Mechanical Inspector for the State of Michigan Bureau of Construction Codes. The second technical session will be on the Michigan Code Update process and schedule. The speaker will be Jonathan Paradine, Chief of the Building and Permits Division for the State of Michigan Bureau of Construction Codes.

The speaker bios can be found online on the updated ASPE Program page: <https://www.aspe.org/eastern-michigan/program.html>

Due to site logistics, this meeting is in person only. There is no virtual attendance option. We are going to attempt to record the presentations but can make no promises at this point. We apologize for any inconvenience and hope you can still join us in person!

**In person registration only:** <https://www.eventbrite.com/e/january-11th-ashrae-aspe-joint-chapter-meeting-tickets-228904488487>

A HUGE **thank you** to **Sonya Pouncy** from ASHRAE for putting this all together and working with the BCC to get speakers. This is truly a great opportunity for us to learn from the people whose work we interact with daily but who we do not know personally!

Cheers!

Sincerely,

Theresa Card

[Vpt.aspe.emc@gmail.com](mailto:Vpt.aspe.emc@gmail.com)

Engaging, retaining and advancing women in the industry.

**Become Involved**  
**Click here or go to:**  
<https://www.aspe.org/membership-global-community/membership/special-interest-groups/women-of-aspe/>

When you need to flex some serious muscle, bring out the big guns.



**Edge**  
HP IRON

Step up to the new Edge HP Iron for aggressive DWV applications.

SEE THE DETAILS AT [CHARLOTTEPIPE.COM/EDGEHPIRON](http://CHARLOTTEPIPE.COM/EDGEHPIRON)

**CHARLOTTE**  
PIPE AND FOUNDRY COMPANY  
You can't beat the system.

# VP Membership Report

**Kristin Simoneaux, P.E., CPD, LEED**



Hi All!

I hope you are all staying healthy. Are you making the most of your membership? Not only are the amazingly awesome chapter meetings covered by your membership but you also have access to CEUs through the ASPE education website using the

Read, Learn, and Earn articles.

Check them out at: <https://education.aspe.org/RLE>.

One of the many benefits to becoming an ASPE member is the mentoring program. If you are interested in becoming a mentor to a plumbing Padawan or wish you had a sanitary Saban of your very own to help guide you through your plumbing career, please check out our Mentoring Program at: <https://connect.aspe.org/aspe-mentor-match/mentoring>. Our ASPE Connect Mentor Match program helps you find, connect, and share experiences with others as either a mentor or mentee.

Are you interested in becoming a mentor? Looking for a mentor? ASPE Connect Mentor Match program will help you reach your professional development goals.

You can apply in four easy steps!

Step 1: Complete your ASPE Connect profile

Step 2: Enroll as either a mentor or a mentee (or both!)

Step 3: Search for your topics of interest

Step 4: Connect with your mentor/mentee!

Did you know you can get a **discount with your ASPE membership** at the ASPE bookstore? Interested in getting your CPD? The bookstore has the study guide! Ever been in a conversation about plumbing and get lost on the terminology? Get the Plumbineering Dictionary! Whatever your plumbing questions, the ASPE bookstore has the answers. With your ASPE membership you get significant discounts!

There is even the Tables App that is **FREE for members**. The app's interactive design tables allow you to choose the appropriate pipe material and other design criteria, and the sizing data appears instantly in either SI or English units. You can quickly and conveniently calculate pipe flow rates and velocities, friction loss, pressure loss, and stack flow rates.

*The design tables cover all the formulas and equations commonly used in plumbing system design projects, including:*

<ul style="list-style-type: none"><li>• Drainage fixture unit (DFU) values for the major model plumbing codes</li></ul>	<ul style="list-style-type: none"><li>• Typical resistance coefficients for valves and fittings</li></ul>	<ul style="list-style-type: none"><li>• Water supply fixture units (WSFU)</li></ul>
<ul style="list-style-type: none"><li>• Surface roughness coefficient (C) values for various types of pipe</li></ul>	<ul style="list-style-type: none"><li>• Typical hot water temperatures for plumbing fixtures and equipment</li></ul>	<ul style="list-style-type: none"><li>• Building occupant demographic classifications</li></ul>
<ul style="list-style-type: none"><li>• Hot water demand per fixture for various types of buildings</li></ul>	<ul style="list-style-type: none"><li>• Gallons (liters) of water per hour per fixture</li></ul>	<ul style="list-style-type: none"><li>• scfm to acfm conversions</li></ul>
<ul style="list-style-type: none"><li>• Basic vacuum pressure measurements</li></ul>	<ul style="list-style-type: none"><li>• Conversions from torr to various vacuum pressure units</li></ul>	<ul style="list-style-type: none"><li>• IP and SI pressure conversions</li></ul>
<ul style="list-style-type: none"><li>• Barometric pressures corresponding to altitude</li></ul>	<ul style="list-style-type: none"><li>• Factors for flow rate reduction due to altitude</li></ul>	<ul style="list-style-type: none"><li>• Physical and combustion properties of commonly available fuel gases</li></ul>
<ul style="list-style-type: none"><li>• Approximate gas demand for common appliances</li></ul>	<ul style="list-style-type: none"><li>• Average physical properties of natural gas and propane</li></ul>	<ul style="list-style-type: none"><li>• Specific gravity of a variety of gases</li></ul>

The full version of the Plumbing Engineering & Design Tables App is available only to members of ASPE. However, numerous features are unlocked for non-members to use. We invite you to explore these features and then visit ASPE.org to join and take advantage of all career benefits ASPE has to offer.

*Continued on page 9*



**VP Membership Report** (cont. from page 8)  
 Kristin Simoneaux, P.E., CPD, LEED

*Some fun Bookstore items!:*

		
Electronic Download	Uncategorized	Books
ASPE's Plumbineering Dictionary	ASPE Tables App	CPD Study Guide – 2020
Price: \$59.95	Price: \$0.00	Price: \$85.00
Member Price: \$29.95	Member Price: \$0.00	Member Price: \$50.00

If you ever have membership questions, please feel free to reach out to me. Until we meet again, stay healthy!

**Kristin Simoneaux**, P.E., CPD, LEED AP  
 Associate / Senior Mechanical Engineer  
 Direct: (248)336-4760  
[ksimoneaux@stantec.com](mailto:ksimoneaux@stantec.com)





## R. L. Deppmann Company

**Job Title:** Sales Engineer

**Reports To:** Engineering Sales Manager

### About Deppmann

Our Company focuses on helping people make better decisions. We are a company that is responsive to our customer and understands how our product work and interact in hydronic and plumbing systems. Our company culture is shaped by our Core Values: Knowledge, Empowerment, and Responsiveness. We achieve this through selling hydronic and plumbing equipment in Michigan and Ohio. Our Company is 100% employee owned.

**Scope:** Sales members utilize their technical knowledge of hydronic, steam and plumbing systems and sales experiences to help provide sales & support for the products represented by R.L. Deppmann. The Engineering Outside Salesperson focuses on the projects during the development and design phases, being a resource to our engineers in developing system designs and equipment selections.

### Who We Are Looking For:

Looking for someone that enjoys collaborating with engineers and fellow team members to provide the best solution for any given project. The successful candidate enjoys teaching as well as learning. She/He will seek out opportunities to collaborate and loves to solve problems using her/his technical skills.

### Responsibilities Include:

- **Selling – Pursuing the Order:**
  - Close the order at the engineer level (specifications and schedules)
  - Negotiate pricing
  - Coordinate quote
  - Manage vendors
  - Engineer/systems design
  - Internal collaboration/coordination
  - Follow-up on leads from Customer Service & Inside Sales
  - Respond to pricing requests
  - Joint sales with customers
  - Exceed sales goals for sales territory
  
- **Customer Management:**
  - Problem solving
  - Conduct training
  - Meet with customers: relationship building
  - On site tech support
  - Visit jobsites

March 2021



- **Internal Administrative Activities:**
  - Acquire product/industry/technical knowledge
  - Develop and analyze sales plan
  - Weekly teleconference call
  - Attend department offsite meeting
  - Utilize CRM to provide regular updates on projects & customers
  - Personal development
  - Backup Estimation
  
- **Marketing:**
  - Attend social events: golf outings, trade shows
  - Participate in professional organizations: i.e. ASHRAE, ASPE
  
- **Miscellaneous**
  - Commitment to Ongoing Personal Training / Development
  - Other duties may be assigned

**Requirements:**

Strong Computer Skills in Microsoft Office Suite, Technical background in HVAC (Degree Preferred), Ability to Multi-Task, Strong Desire to Learn, Take on responsibility, Great People Skills, Detail Oriented.

**Travel:**

Local travel required within Mid-Michigan & Traverse City, MI area territory, 10% travel outside of sales territory. A valid driver's license is required.

If you have these skills and the desire to join a driven team, send resume to Human Resources at [jobs@deppmann.com](mailto:jobs@deppmann.com)

March 2021

# Replacing Your Water Heater Every Few Years is Not Our Business Plan



Conquest<sup>®</sup> condensing, gas-fired water heaters are constructed from AquaPLEX<sup>®</sup> duplex stainless steel so they're corrosion-resistant in potable water at any temperature. Available in 199-1000 MBH, Conquest provides even more BTUs in small spaces and fits through a standard 36-inch doorway. With a thermal efficiency of up to 96%, long product life and a 15-year tank and heat exchanger warranty, you can't afford not to have one.

Call R.L. Deppmann or visit our Monday Morning Minutes blog at [deppmann.com](http://deppmann.com) for information on PVI Water Heaters  
800.589.6120



800.784.8326 | [pvi.com](http://pvi.com)



# [ calQlate Your Potential Energy Savings ]

**Booster system sizing can be difficult. That's why there's calQflo.**

QuantumFlo's advanced innovation makes us the premier industrial manufacturing and distribution leader of intelligent pump system technology.

We offer the industry's revolutionary online booster system sizing software, calQflo, that selects the most efficient booster option for your needs—so that your system keeps pumping long into the future! With calQflo, you can:

- Compute the most **size-appropriate** system for your projects.
- **Save money** by selecting **energy-efficient** specs.
- Gain all of this information for **free!**



**Get 20-50% Potential Energy Savings from Standard Sizing**



**Quality Water & Air, Inc.**

Quality Water & Air, Inc.  
 1402 Souter  
 Troy, MI 48083  
 Phone: 248-589-8010  
 Email: [qualitywaterair@cs.com](mailto:qualitywaterair@cs.com)  
 Website: [www.qualitywaterair.com](http://www.qualitywaterair.com)  
 Contact: Georgann - Chuck - Paul



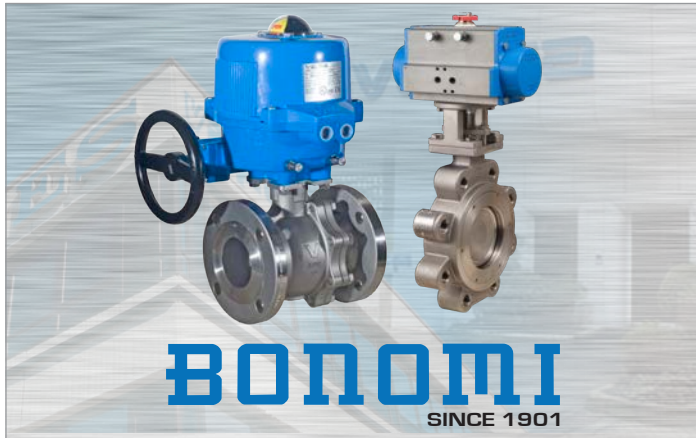
Every Panel Meets UL508A with a 100KAIC (SCCR) Withstand Rating



*Cindy Zatto*

V.E. SALES COMPANY, INC.

For additional information on Aquatherm, Highland Tank, MIRO and Bonomi products, please call Cindy Zatto with V. E. Sales, Inc. at 810.343.2713 or email [cindyz@vesalesinc.com](mailto:cindyz@vesalesinc.com)



**BONOMI**  
SINCE 1901


Put more than a century of excellence in valve design and production to work for your company

More than 100 years ago, the Bonomi family began designing and manufacturing valves in Italy with the same passion for excellence as the winemakers that were our first customers.

Today, our low-torque ball valves, in sizes 1/4" to 56", and precision electric and pneumatic actuators are still made in Italy in our own advanced production facilities. And though our single-part number valve and actuator packages make valve automation more simple than ever, our engineering support is available world wide.

Call Bonomi. We'll put our history of flow-control excellence to work for your future.

[www.bonominorthamerica.com](http://www.bonominorthamerica.com) • (704) 412-9031

## Stop Battling Volatile Prices and Corrosion

Pricing for steel mechanical piping systems is rising significantly. Lightweight, stably priced Aquatherm polypropylene-random (PP-R) piping is connected by quick, reliable heat fusion. Plus, PP-R doesn't rust, scale, or corrode and it has a 60-year projected lifespan and many other benefits.

**aquatherm**  
we've got a pipe for that

Learn more at [aquatherm.com](http://aquatherm.com)

## PROBLEM:

RPZ inside a building  
= flood damage  
= design engineer liability

## SOLUTION:

Install the RPZ inside a freeze protected enclosure located outside the building.

### Want to learn more?

Visit the engineering blog pages at [www.safe-t-cover.com/blog](http://www.safe-t-cover.com/blog)



**SAFE-T-COVER**  
BY HYDRODOWL

[safe-t-cover.com](http://safe-t-cover.com) 800-245-6333

PROUDLY MADE IN THE USA  
[WWW.MIROIND.COM](http://WWW.MIROIND.COM)

## THE SIMPLE, SMART SOLUTION TO ROOFTOP SUPPORTS



- ✓ Industry-leading 20 year warranty
- ✓ Designed to protect roof membrane by keeping PSI below 2.0
- ✓ Supports come pre-assembled and ready to install
- ✓ Supports available for duct, pipe, mechanical units, and more, as well as stair crossovers, ramps, and service platforms
- ✓ Professional assistance through the process, from take-off to final installation

**MIRO**  
INDUSTRIES, INC.  
ROOFTOP SUPPORT PRODUCTS

## HOW CAN WE SUPPORT YOU?



**New Century Sales, Inc.**  
Manufacturer's Representatives

**EAST MICHIGAN**  
1715 Traditional Dr.  
Commerce Township, MI 48390  
P (248) 960-1147 F (248) 960-1149

**WEST MICHIGAN**  
550 36th St. SE  
Grand Rapids, MI 49548  
P (616) 600-9660

 Expansion Tanks <a href="http://www.amtrol.com">www.amtrol.com</a>	 Shower Doors <a href="http://www.bascoshowerdoor.com">www.bascoshowerdoor.com</a>	 Washroom Solutions <a href="http://www.bradleycorp.com">www.bradleycorp.com</a>	 Hydronic Accessories <a href="http://www.caleffi.com/usa/en-us">www.caleffi.com/usa/en-us</a>	 Plumbing Fittings <a href="http://www.copperpress.com">www.copperpress.com</a> <a href="http://www.isotubi-usa.com">www.isotubi-usa.com</a>
 Bath Furniture <a href="http://www.fairmontdesigns.com">www.fairmontdesigns.com</a>	 Sewer Cleaning Machines <a href="http://www.drainbrain.com">www.drainbrain.com</a>	 PVC Products <a href="http://www.genovaproducts.com">www.genovaproducts.com</a>	 Better Boilers <a href="http://www.ibcboiler.com">www.ibcboiler.com</a>	 Stainless Steel Sinks <a href="http://www.justmfg.com">www.justmfg.com</a>
 Valves and Fittings <a href="http://www.matco-norca.com">www.matco-norca.com</a>	 Water and Waste Pumps <a href="http://www.femyers.com">www.femyers.com</a>	 Fiberglass & Acrylic Tub & Showers <a href="http://www.oasisbath.com">www.oasisbath.com</a>	 Oasis Water Coolers <a href="http://www.oasiscoolers.com">www.oasiscoolers.com</a>	
 Supply Chain Services <a href="http://www.oatey.com">www.oatey.com</a>	 Bath Fans <a href="https://na.panasonic.com/us/home-living-solutions/ventilation-indoor-air-quality/">https://na.panasonic.com/us/home-living-solutions/ventilation-indoor-air-quality/</a>	 Pipe Installation Tools <a href="https://pexgun.com/">https://pexgun.com/</a>		
 PEX Plumbing Products <a href="http://www.rehau.com/us-en">www.rehau.com/us-en</a>	 Water Heaters <a href="http://www.rheem.com">www.rheem.com</a> <a href="http://www.ruud.com">www.ruud.com</a>	 Bathroom Vanities & Cabinets <a href="http://www.strasserwood.com">www.strasserwood.com</a>	 Brazing & Soldering <a href="https://www.esabna.com/us/en/products/gas-equipment/brazing-and-soldering/index.cfm">https://www.esabna.com/us/en/products/gas-equipment/brazing-and-soldering/index.cfm</a>	
  <a href="http://www.dewalt.com">www.dewalt.com</a> <a href="http://www.irwin.com">www.irwin.com</a> <a href="http://www.lenoxtools.com">www.lenoxtools.com</a>		 Link to Good Living  <a href="http://www.americanstandard-us.com">www.americanstandard-us.com</a> <a href="http://www.dxv.com">www.dxv.com</a> <a href="http://www.fiatproducts.com">www.fiatproducts.com</a> <a href="http://www.grohe.us/en_us">www.grohe.us/en_us</a>		

[www.newcenturysales.com](http://www.newcenturysales.com)

# DECEMBER MEETING

## THANK YOU TO OUR ATTENDEES!

Michael Brotherson  
Jamie Caporosso  
Alan Deal  
Vivian Enriquez  
Robert Frey

Rachel Gendich  
Bill Grayzar  
Pamela Hartsell  
Hank Koppelo  
Michael Melaragni

Kristian Merritt  
Adrian Olajec  
Kristin Simoneaux  
Matt White  
Karl Wiegand

## DECEMBER MEETING PHOTOS



Our Toy Donation Drive was fun and rewarding!



# DECEMBER MEETING PHOTOS



Karl Wiegand of Victaulic gave the early presentation on standpipes and fire pumps



Karl also gave a technical presentation on the complexities of wet and dry fire protection systems

**intellihot™** Intelligent Hot Water Supply Boilers  
Endless Water. Zero Waste.

Heating Boilers  
Hot Water Supply  
Pool/Spa Heaters  
Storage Tanks  
Complete Parts Stock



High Efficiency Water Heaters  
High Efficiency Heating  
Boilers  
Custom System Solutions

Snowmelt Systems  
Radiant Floorheat Systems



Gas Fired Heat Pumps  
Heat Recovery Chillers



Natural Gas / Propane / Electric  
**3,000 to 4,000,000 BTU's**  
- ALSO -  
Holby Thermostatic Mixing Valves



Jamie Caporosso: [jamie@kerrpump.com](mailto:jamie@kerrpump.com)  
12880 Cloverdale, Oak Park, MI 48237  
Ph.: (248) 543-3880 Fax: (248) 543-3236

Liquid Pumps  
Vacuum Pumps  
Heat Exchangers  
Blowers  
Related Equipment  
and Accessories

**Sales • Service • Repair**



# AURORA FIRE PUMPS

## Compact Fire Pump Systems

- UL Listed/FM Approved Aurora Fire Pump
- UL Listed/ FM Approved Fire Pump Controller
- Capacities of 50-750 Gpm.
- Pressures of 40-160 Psi.
- Aurora Model PVM (close coupled to an ODP motor.)

## Vertical Split Case Electric Drive Fire Pump

- Electric Driven
- For Commercial, Industrial and Marine use only.
- UL Listed/ FM Approved/NFPA-20 Design

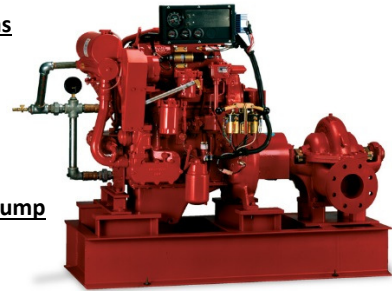
## Horizontal Split Case Diesel Drive Fire Pump

- Diesel and Electric driven available.
- Flows at 250 gpm to 5000 gpm.
- Pressures available up to 490 Psi.

PLEASE INQUIRE TO KERR PUMP FOR PRICING,  
SELECTIONS, OR TESTING ON EXISTING.

ALSO, PLEASE SEE [www.aurorapump.com](http://www.aurorapump.com)

*Michigan's Oldest Supplier of Pumps and Process Equipment - 1905*



# MegaPress® G

Press safer.  
Press  
bigger.



Connected in quality.

Quick, safe connections on large diameter gas lines.

Viega MegaPress(R)G requires no open flames or added cost of fire watch, so projects are safer and more profitable. Installers can secure gas pipe up to 4" in 16 seconds or less, saving 60-90% on labor costs. That's why professionals choose MegaPressG - the trusted press connection method approved for gas lines ½" to 4".

**Carl Petitt**  
Technical Manager  
(614) 852-2691  
carl.petitt@viega.us

**Michael Norgan**  
District Sales Manager  
(989) 415-2431  
michael.norgan@viega.us

# ALL-IN-ONE SCALD PROTECTION



Certified!



420-T Series

Now there's no need to install a thermostatic mixing valve below the sink. The new 420-T Series combines Chicago Faucets durability with integrated scald protection. The result is a solid, easy-to-install restroom faucet that complies with ASSE 1070 requirements. With the 420-T, everything you need to meet current building codes and protect users against scalding is built right into the faucet.

Visit [chicagofaucets.com](http://chicagofaucets.com) or call your local representative for more information.

**Taggart-Knight Group**  
248/553-4388  
info@taggartknight.com



## Code Study and Development Group of Southeastern Michigan

Item No.	Description	Price Each*	Order Date
3200S18MI	2018 MI Plumbing Code	\$ 89.50	
3300S18MI	2018 MI Mechanical Code (Not Yet Available)	\$ 89.50	PO Number
3200S18	2018 IPC without Commentary	\$ 86.00	(If required)
3210S18	2018 IPC with Commentary	\$ 112.00	
3300S18	2018 IMC without Commentary	\$ 86.00	
3310S18	2018 IMC with Commentary	\$ 112.00	
3600S18	2018 IFCG without Commentary	\$ 86.00	
3610S18	2018 IFGC with Commentary	\$ 112.00	
3000S18	2018 International Building Code	\$ 130.00	
3000S15MI	2015 MI Building Code	\$ 139.00	
3100S15MI	2015 MI Residential Code	\$ 126.00	
3550S15MI	2015 MI Rehab for Existing Bldgs	\$ 90.00	
3800S15MI	2015 MI Energy Code	\$ 48.00	
3600S15	2015 IFGC without Commentary	\$ 84.00	
3310S15	2015 IMC with Commentary	\$ 109.00	
		\$ -	

- **Payment MUST accompany order / verify your preferred delivery method**
- **Credit cards, cash or company check accepted.**
- Dann Holmes - buildingwaterhealth@outlook.com or (248) 921-0582
- If orders are to be mailed, call Dann and you will be advised of additional freight charges.

• **Make check payable to: Code Study & Development Group of SE Michigan**

Mailing Address: **Will be given upon placement of order**

Item No.	Description	Quantity	Unit Price	Item Total	Status
				\$ -	
				\$ -	
				\$ -	
				\$ -	
				\$ -	
				\$ -	
				\$ -	
				\$ -	
				\$ -	
				\$ -	
				\$ -	
Total books subject to incoming ICC Frgt charges		<b>0</b>			

	<b>Client Information</b>
Company	
Address	
City	
State	
Zip-Code	
	<b>Contact Information</b>
Attention	
E-Mail	
Phone	

	<b>Order Details</b>
Sub-Total	\$ -
Add \$5 per book (Outgoing Frgt Charge)	\$ -
ICC Frgt	\$ -
USPS Frgt	\$ -
MI Sales Tax	\$ -
<b>Invoice Total</b>	<b>\$ -</b>

Received By: \_\_\_\_\_

Check No. \_\_\_\_\_ or Cash \_\_\_\_\_  
 Credit Card Approval No. \_\_\_\_\_

Date Paid \_\_\_\_\_

\*Supersedes all pricing forms printed before October 19, 2021

**2021 Code Study Order Form**



**New Century Sales, Inc.**  
 Manufacturer's Representatives



**COPPERPRESS® SYSTEM BENEFITS**

- Size range from 1/2" to 4"
- Green visual applicaton bands
- Consistent wall thickness on all products
- Leak before press systems
- Less equipment required
- Compatibility of fittings and tools

[www.copperpress.com](http://www.copperpress.com)

**Approvals & Certifications**

- NFS ANSI/CAN 61
- UPC
- cUPC
- IPC
- IAPMO PS-117
- ICC-ES-PMG
- ASME B16.51



**ISOTUBI USA**

Stainless Steel Press Solutions

<https://isotubi-usa.com>

**Represented by New Century Sales:**

**WEST MICHIGAN**

Michael Zago  
 C (616) 293-2121

E [mikez@newcenturysales.com](mailto:mikez@newcenturysales.com)

**WEST MICHIGAN**

Rod Cox  
 C (616) 706-1481

E [rodc@newcenturysales.com](mailto:rodc@newcenturysales.com)

**EAST MICHIGAN**

Todd Hiler  
 C (513) 633-2609

E [todhd@newcenturysales.com](mailto:todhd@newcenturysales.com)

**EAST MICHIGAN**

Ross Beck  
 C (734) 673-2119

E [rossb@newcenturysales.com](mailto:rossb@newcenturysales.com)

[www.newcenturysales.com](http://www.newcenturysales.com)



**T&S IS HERE >**

T&S is proud to be a trusted name across a wide range of markets — staying at the forefront of today's evolving industry and providing a vast selection of reliable solutions that meet required codes and compliances.

Learn more at [tsbrass.com/markets](http://tsbrass.com/markets).

Find us in



EDUCATION



PUBLIC VENUES



HEALTHCARE



COMMERCIAL OFFICES



T&S plumbing products represented in Eastern Michigan by: Diversified Spec Sales - 248-398-2400

# ASPE Mentoring Program

The Women of ASPE are excited to introduce ASPE's new Mentoring Program!

This program, which is available to all members of the Society, has been designed to connect ASPE members who have a particular skill set (mentor) with individuals (mentee) who are searching to acquire the same skills to develop and make progress toward their personal and professional goals.

## **Who Is a Mentor?**

A mentor is someone who can help the mentee develop skills for success and long-range career planning, is able to be a good listener, is willing to share experiences and views, is willing to commit time and effort, provides an "open door" to questions and problems, points out both strengths and opportunities for improvement, and has a vested interest in the growth and development of their mentee.

### *Benefits to the mentor:*

- Satisfaction in helping someone mature, progress, and achieve goals
- Meeting and sharing experiences with other mentors
- Personal ongoing support to help the mentee succeed
- Personal fulfillment through contribution to the Society and the individual

## **Who Is a Mentee?**

Having a mentor can contribute to a successful and satisfying career. Without a mentor, that learning occurs mostly through trial and error. With a mentor, even experienced professionals can benefit from the experiences and expertise of someone who has withstood the trial and can help the mentee avoid the mistakes. Similarly, those new to the industry will discover that being a mentee shortens the learning curve for acquiring the skills and knowledge most critical to a fruitful career.

### *Benefits to the mentee:*

- Discover new talents about yourself
- Career satisfaction
- Expand your personal network
- Maximize your strengths

[aspe.org/aspe-mentoring-program](https://aspe.org/aspe-mentoring-program)



**BALFREY & JOHNSTON, INC.**

Manufacturers' Representatives  
 13050 Northend  
 Oak Park, MI 48237  
 Ph 313 864-2800 Fax 313 864-7219  
**George D. Johnston:** george@balfrey-johnston.com  
 balfrey-johnston.com

**J.W. SALES, INC.**

Manufacturers' Representative  
 1570 E. Highwood  
 Pontiac, MI 48340  
 O: 248.745.8590 F: 248.745.0889  
**Thomas Huck:** thomash@jwsalesinc.net  
 C: 248-602-1575  
**Michael Fedorinchik:** mikef@jwsalesinc.net  
 Jwsalesinc.net

**BURKE AGENCY, INC.**

Manufacturers' Representatives  
 2605 E. Oakley Park Road, Suite A,  
 Commerce Twp, MI 48390  
 Ph 248 669-2800 Fax 248 669-3310  
**Brian Burke, Peter Lapham, John Taylor**  
 bburke@burkeagency.com  
 burkeagency.com

**KERR PUMP AND SUPPLY**

Manufacturers' Representatives  
 12880 Cloverdale  
 Oak Park, MI 48237  
 Ph 248 543-3880 Fax 248 543-3236  
**Jamie Caporosso:** jamie@kerrpump.com  
 kerrpump.com

**DALE PRENTICE COMPANY**

Manufacturers' Representatives &  
 Application Engineering Solutions Provider  
 26511 Harding Avenue  
 Oak Park, MI 48237  
 Ph 800 536-4700 Fax 248 339-5559  
**Michael Cullen:** mcullen@prenticeco.com  
 Mobile 248 302-5924  
 prenticeco.com

**LOCHINVAR**

High Efficiency Water Heaters and Boilers  
 45900 Port Street  
 Plymouth, MI 48170  
 Ph 734 454-4480 Fax 734 454-1790  
**Jason Loverich:** jloverich@lochinvar.com  
 lochinvar.com

**DAVE WATSON ASSOCIATES, INC.**

Manufacturers' Representatives  
 1325 W. Beecher St.  
 Adrian, MI 49221  
 Ph 517 263-8988 Fax 517 263-2328  
**Rick Johnston:** rjohnston@davewatson.biz  
 davewatson.biz

**MAJOR/LOZUAWAY & ASSOCIATES, INC.**

Manufacturers' Representatives  
 1117 W. Grand Blanc Rd.  
 Grand Blanc, MI 48439  
 Ph 810 234-1635 Fax 810 234-8389  
**Mike Ostrowski:** moski@lozuaway.com  
 Mobile 810 287-6983  
**Bill Campbell, PE:** bill@lozuaway.com  
 Mobile 810-287-0029

**DIVERSIFIED SPEC. SALES, INC./  
HOWLEY AGENCY SALES CO.**

Manufacturers' Representative  
 13261 Northend Ave.  
 Oak Park, MI 48237-3265  
**Brendan Burdette:** bburdette@dsshowley.com  
 Ph 248 398-2400 Fax 248 547-4905  
 diversifiedspec.com

**NEW CENTURY SALES, INC.**

Manufacturers' Representatives  
 1715 Traditional Dr.  
 Commerce Township, MI 48390  
 Ph 248 960-1147  
**Ross Beck:** rossb@newcenturysales.com  
 Mobile 734 673-2119  
**Todd Hiler:** toddh@newcenturysales.com  
 Mobile 513 633-2609  
 newcenturysales.com

**HS/BUY VAN ASSOCIATES, INC.**

Manufacturers' Representatives  
 56 S. Squirrel  
 Auburn Hills, MI 48326  
**Jarrett Armstrong, Bill Allen**  
 Ph 888 472-8982 Fax 248 852-0298  
 info@hsbuyvan.com  
 hsbuyvan.com

**PAULA. BAKER**

ASSE Region #4 Director - Mid West  
 ASSE International  
 18927 Hickory Creek Drive, Suite 220  
 Mokena, IL 60448  
 Ph 313 399-3072 Fax 248 585-1437  
**Paul Baker:** paul.baker@ualocal98jatc.org  
 www.asse-plumbing.org

**PERFORMANCE ENGINEERING GROUP**

Engineered Water Products  
32955 Industrial Rd.  
Livonia, MI 48150

**Alan Deal:** adeal@performanceengineering.com  
Ph 734 266-5300 Fax 734 266-5310  
performanceengineering.com

**R.L. DEPPMANN COMPANY**

Manufacturers' Representatives  
46575 Magellan Drive  
Novi, MI 48377

**Gerry Potapa Jr., CPD, Paul Prentice, LEED AP®**  
**Mark Fine, LEED AP®, Chris Lieder**  
Ph 800 589-6120 Fax 248 354-3763  
sales@deppmann.com  
deppmann.com

**PROGRESSIVE PLUMBING SUPPLY**

Wholesale Distributor  
31239 Mound Road  
Warren, MI 48092

Ph 586 756-8662 Fax 586 756-9077  
ppsupplyco.com  
Locations: Warren, Detroit, Mt. Clemens, and Oxford

**TAGGART-KNIGHT GROUP**

Manufacturers' Representatives  
37686 Enterprise Ct.  
Farmington Hills, MI 48331

**Gary O. Taggart**  
Ph 248 553-4388 Fax 248 553-4653  
info@taggartco.com  
taggartknight.com

**QUALITY WATER & AIR, INC.**

Manufacturers' Representative  
1402 Souter  
Troy, MI 48083

**Georgann Kummer, WBE**  
Ph 248 589-8010 Fax 248 589-8016  
qualitywaterair@cs.com  
qualitywaterair.com

**V. E. SALES COMPANY**

V. E. Sales is your source for  
the finest quality flow control solutions.  
25200 Jefferson Ave.  
St. Clair Shores, MI 48081

**Thomas Van Egmond**  
Ph 586 774-7760 Fax 586 774-1490  
vesalesinc.com



Place your ad here and expand your company!





## 2021-2022 ASPE EMC Board

### President

Pam Hartsell, CPD, PMP  
Strategic Energy Solutions  
4000 W. Eleven Mile Rd.  
Berkley, MI 48072  
(248) 399-1900 x 222  
Fax: 399-1901  
president.aspe.emc@gmail.com

### VP Technical

Theresa Card, P.E., CPD,  
LEED AP BD+C  
Strategic Energy Solutions  
4000 West 11 Mile Rd  
Berkley, MI 48072  
(248) 399-1900 ext 223  
vpt.aspe.emc@gmail.com

### VP Legislative

William Grayzar, CPD  
28150 Greenfield Rd.  
Southfield, MI 48076  
(248)569-1430 ext.333  
bill@dsdonline.com

### VP Membership

Kristin Simoneaux, P.E., CPD,  
LEED AP  
2338 Coolidge Hwy. #100  
Berkley, MI 48072  
(248) 336-4700  
kristin.simoneaux@stantec.com

### VP Education

Theresa Card, P.E., CPD,  
LEED AP BD+C  
Strategic Energy Solutions  
4000 West 11 Mile Rd  
Berkley, MI 48072  
(248) 399-1900 ext 223  
vpt.aspe.emc@gmail.com

### Treasurer

Rachel Gendich  
Strategic Energy Solutions  
4000 W. Eleven Mile Rd.  
Berkley, MI 48072  
(248) 399-1900  
Fax: 399-1901  
treasurer.aspe.emc@gmail.com

### Administrative Secretary

Brianne Hall, P.E., CPD,  
LEED AP BD+C, GGP  
FTC&H  
39500 Mac Kenzie Dr. Suite 100  
Novi, MI 48377  
(248) 324-4780  
bhall@fishbeck.com

### Corresponding Secretary

George Johnston II  
13050 Northend Ave  
Oak Park, MI 48237  
(313) 864-2800 Fax: 864-7219  
george2@balfrey-johnston.com

### Chaper Affiliate/Liaison

Dann Holmes  
(248) 921-0582  
r2al@aspe.org

### AYP Liaison

George Bellman  
Strategic Energy Solutions  
4000 W. Eleven Mile Rd.  
Berkley, MI 48072  
(248) 399-1900 x222  
Gbellman72@gmail.com

### WOA Liaison

Theresa Card, P.E., CPD,  
LEED AP BD+C  
Strategic Energy Solutions  
4000 West 11 Mile Rd  
Berkley, MI 48072  
(248) 399-1900 ext 223  
allethe@gmail.com

### Directors

Michael Melaragni, CPD  
38958 Lapham Drive | Livonia, MI  
48154-1014  
(734) 591-9339  
mjmelaragni@yahoo.com

Kari Rosteck  
(313) 318-6555  
kari.rosteck@gmail.com

John Nussbaum, IPP, FASSE,  
FASPE  
(248) 866-1400  
jrnussbaum@comcast.net



## SPONSOR ADVERTISING OPPORTUNITY INFORMATION

ASPE EMC News is published 9 times per year - September through May.

Yearly advertising for a Business Card ad, which also includes a full Line Card in our sponsors guide:  
\$200.00 for members and \$250.00 for non-members.

Graphic Ads - Full Year (9 Issues): Quarter page - \$250.00 ○ Half page - \$350.00 ○ Full page - \$550.00

Checks should be made payable to ASPE EMC and mailed to: Rachel Gendich – Treasurer  
c/o Strategic Energy Solution, 4000 W. Eleven Mile Rd., Berkley, MI 48072

Email all digital artwork to: Theresa Green, Newsletter Editor at: [theresa.m.green@outlook.com](mailto:theresa.m.green@outlook.com)

Circulation 260 - Distributed to: Engineers, Contractors, Inspectors, and other industry professionals in Michigan.

**PAY FAST, PAY EASY**  
Secure Payments Accepted By

