

DEC - MEETING AGENDA

DATE:

TUESDAY, DECEMBER 12, 2023

WHERE:

Plumbing Industry Training Center
in Troy, MI

5:00 PM - 5:50 PM

Storm System Design

5:50 PM - 6:15 PM

Vendor Table Top Presentations

6:15 PM

Dinner Service

6:30 PM - 7:30 PM

Panel Discussion on Water Treatment

REGISTRATION REQUIRED

IN-PERSON: <https://www.eventbrite.com/e/767747372057?aff=oddtcreator>

SEE INSIDE COVER FOR TABLE OF CONTENTS

William Grayzar, CPD, GPD, FASPE President of ASPE EMC



I hope everyone had an enjoyable Thanksgiving Holiday and enjoyed time with family and friends.

As we move into December and we start making out plans for the Christmas Holidays, remember to add our **December 12th** meeting to your calendars. The meeting will be held at the Plumber 98 and MCA Detroit Training Center (PITC) located at 1911 Ring Dr. in Troy, MI 48083, as usual, and will begin promptly at 5:00 PM with our Design

Class covering “**Storm System Design**” followed by dinner and our Technical Session which will be a panel discussion on “**Water Treatment**”. The panel will consist of representatives from R.L. Deppmann Co., Rapid Water Technologies, and DuBois Chemicals. At a minimum will be discussing various water treatment technologies including high temperature flushing, copper/silver ionization and nano bubble generators. I am sure this is a discussion you won’t want to miss!

Going back to storm drainage. Unlike a sanitary sewer system in which drainage from the fixtures is collected in drains and piped to a wastewater plant for treatment, runoff from rainfall events and snow melting generally flow unimpeded and untreated through the environment. Storm piping systems collect water run-off from impervious surfaces such as roof and parking lots and transport the water to a safe location for release back into the environment. This could be a reservoir, lake, stream, retention basin, etc. In urban areas, runoff can be rapid, leading to flooding. In addition, storm water can carry pollutants into natural water bodies, which include chemicals, debris, and sediment. These pollutants can harm aquatic ecosystems, degrade water quality, and disrupt the balance of delicate ecosystems. It is important to understand what is being introduced into the storm water system. Also, improperly sized storm water drainage systems can lead to flooding and damage to buildings. If you want to know how to properly design and size a storm water system come to the December Design Class.

Lastly, here is a little Christmas trivia you can share with your family and friends this Holiday. Did you know that During World War II, the United States Playing Card Company joined forces with American and British intelligence agencies to create a very special deck of cards.

Continued on page 2

NOTICES

Contents

President's Report	1
Program	3
In The Know	4
VP Technical Report	5
VP Legislative Report	6
VP Membership Report	7
Region 2 AYP Webinar	8
Birthdays	9
NASPE Races	10 - 11
Mentorship Opportunities	12
WOA	13
Golf Outing Flyer	14
November Attendance / Sponsors	18
November Photos	19 - 22
Code Study Book Order Form	29
Line Card Sponsors	30 - 31

DECEMBER BOARD MEETING

Tuesday, 12/5/23 @ 4:30pm
Online Meeting

DECEMBER PROGRAM

Tuesday, 12/12/23, 5pm - 7:30pm
Plumbing Industry Training Center,
1911 Ring Drive, Troy, MI 48083

REGION 2 AYP WEBINAR - MED GAS 101

Tuesday, 12/15/23 @ 11am - 12pm
Live Web Event
Flyer on pg. 8

NASPE RACES - IN CELEBRATION OF WORLD PLUMING DAY!

Tuesday, 3/12/24
Held during the March 2024 Meeting
Flyer on pgs. 10-11

ASPE EMC GOLF OUTING

Tuesday, 6/11/24
The Links of Novi
Flyer on pg. 14

President's Report (cont. from page 1)

Bill Grayzar, CPD, GPD

They distributed them as Christmas gifts to soldiers, but they also helped Allied prisoners of war escape from German POW camps. When wet, individual cards peeled apart to reveal pieces of larger maps of escape routes. Other cards contained instructions about places to avoid or landmarks to look out for. That is a gift I hope you or I never have to open.

I wish everyone a safe and happy holiday and I look forward to seeing you at the Plumbers 98 and MCA Detroit Training Center (PITC) on December 12, 2023.

Bill



**LATEST NEW MEMBER
~ WELCOME ~**

**HARUKA IWASAKI
KEITH FRANK**

DECEMBER DESIGN SESSION

5:00-5:50 PM

TOPIC: Storm System Design

Presenter: **WILLIAM GRAYZAR**, CPD, GPD, FASPE
DiClemente Siegel Design / ASPE EMC President



William Grayzar

Mr. Grayzar is the president of the Eastern Michigan Chapter of ASPE. He has over 35 years of experience in architecture and engineering. Employed with DiClemente Siegel Design Inc. for over 20 years, Bill continues to enhance his system engineering skills through additional vocational field training. Bill has an excellent working knowledge of Michigan's current building codes and regulations. Bill holds an Associate's Degree of Architectural Technology from Delta College and certifications in Plumbing Design and Green Plumbing Design from ASPE. Bill is active with the National Society of ASPE serving on numerous committees. Bill also serves as the current President of the Code Study and Development Group of Southeast Michigan and is a member of National Fire Protection Association. Bill received the Michigan Chapter of ASPE award as Engineer of the Year in 2013.

Description: In this presentation we will review storm water drainage system design considerations, options for primary and secondary drainage systems, and the 2018 Michigan Plumbing Code requirements. We will learn how to properly size both primary and secondary gravity storm water drainage systems, including scuppers, and how to account for adjacent sidewall area drainage.



DECEMBER TECHNICAL SESSION

6:30-7:30 PM

TOPIC: Panel Discussion on Water Treatment

Panelists:



*Moderator
Pam Hartsell*



Rick Atkins



Joseph Ham



Mike Kennedy



CLICK [HERE](#) TO READ BIOS ON EACH PANELIST.

Description: Join us for an insightful and engaging panel discussion about current technologies in domestic water treatment. Water quality can affect the domestic water system in various ways, causing maintenance issues and equipment failure. Our panel of experts will share their insights on various solutions so you can gain valuable information about domestic water treatment and discover how technological innovations are reshaping the way preventative maintenance can be enhanced to ensure our systems stay operational regardless of the available water quality.

New This Year:

Design classes will be centered around the CPD Exam- attend all 7 classes and receive a CPD Study Guide.

About Registration and CEUs:

You will need to register using an Eventbrite link that will be in the email. This allows us to know how many people we can expect. We require sign in/sign out sheets and your CEUs will be submitted to national within 1 week of our event. It may take up to another 2 weeks for the CEUs to show in your ASPE Education log. The PITC does have guest protocols we will have to obey in order to meet there, so please follow all posted signage and procedures.

IN THE KNOW

EMC 45TH ANNIVERSARY HISTORY BOOK IS STILL AVAILABLE!

Cost for printed book - \$50, check or credit card accepted

Pick up @ SES or during a chapter meeting

FREE digital download on the ASPE EMC website.

TABLE TOP SPONSORSHIP PRICING

ASPE Members

- \$200.00 for the 1st table per meeting/per vendor
- \$150.00 for each additional table per meeting/per vendor

Non-Members

- \$250.00 for the 1st table per meeting/per vendor
- \$200.00 for each additional table meeting/per vendor

If a vendor purchases table tops for 3 meetings during the year, a 4th meeting table top will be provided for free.



Commercial Washrooms. Brought to Life.
HANDWASHING & DRYING | ACCESSORIES | PARTITIONS | LOCKERS

CUTTING-EDGE HANDWASHING TAKES SHAPE

The next generation WashBar raises your restroom to new heights by providing touch-free soap, water and drying in an edgy new design for an unforgettable handwashing experience. The single connection point to the sink provides an impressive design element and creates more open space for cleaning.

ADVANTAGES OF THE WASHBAR

- Floating design for a simple and clean aesthetic
- Single connection point to the sink for easier cleaning
- Eliminates the cost and mess of paper towels
- Icons and LED lights to visually orient users
- Smart sensor technology eliminates false activations
- WashBar and bowl work together to keep water in the basin
- Gallon soap capacity to reduce the number of replacements
- Captures soap and water activations for maintenance planning

The new WashBar WB2 is available with the Verge® LVQ Series in Evero® natural quartz, OmniDeck™ 5010 In Terreon® solid surface, or pair with a Terreon solid surface or Evero natural quartz undermount basin with the deck or countertop of your choice.



AVAILABLE IN SIX BEAUTIFUL FINISHES



ALL-IN-ONE WASHBAR



All the fundamentals of handwashing have been thoughtfully designed into Bradley's innovative WashBar.

WASHBAR FEATURES

- CLEAN**
 - Touch-free activation
 - Low level LED indicator
 - Gallon (3.8 L) soap capacity
 - Simply replace soap tank – no cleaning or refilling
 - Liquid and foam soap
- RINSE**
 - Touch-free activation
 - 0.5 GPM (1.9 LPM)
 - Ultra-high efficient 0.35 GPM (1.4 LPM) option where water conservation is a necessity
- DRY**
 - Touch-free activation
 - Heated air stream dries hands quickly and efficiently
 - Adjustable speed for quieter hand drying

bradleycorp.com
800 BRADLEY +1 262 251 6000
W142 N9101 Fountain Boulevard
Menomonee Falls, WI USA 53051



bradleycorp.com/washbar

Represented by New Century Sales:

WEST MICHIGAN Michael Zago D (248) 960-1147 x 107 C (616) 293-2121 E mizek@newcenturysales.com	WEST MICHIGAN Rod Cox D (248) 960-1147 x 116 C (616) 706-1481 E rodc@newcenturysales.com	EAST MICHIGAN Todd Hiller D (248) 960-1147 x 106 C (513) 633-2609 E toddh@newcenturysales.com	EAST MICHIGAN Ross Beck D (248) 960-1147 x 115 C (734) 673-2119 E rossb@newcenturysales.com
---	---	--	--

www.newcenturysales.com

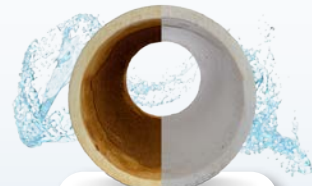
A DIRTY SYSTEM IS COSTLY

Save up to **35%** on energy and maintenance costs.

Ask us how.

Nanobubble Generators from Rapid Water Technologies remove and prevent the buildup of biofilm and other deposits in commercial and industrial water use.

- ✓ Heat Transfer Efficiency
- ✓ Chemical Use
- ✓ Equipment Maintenance
- ✓ System Cleaning & Repair
- ✓ Increased Production
- ✓ Water Use
- ✓ Sanitation (Legionella, Salmonella, COVID-19, etc.)



Start saving today!



A MEMBER OF THE KENDALL GROUP

800-362-4994
sales@merloenergy.com

VP Technical Report

Pam Hartsell, CPD, PMP



Welcome to the Holiday Season Eastern Michigan!

Our third meeting of the 2023-2024 program saw a big crowd and a room full of sponsors. We held another design class that counted towards attendance for a free copy of the CPD Study Guide, and it did not disappoint! If you're considering taking the exam, this is another great

opportunity to mark off your attendance for the free book and to networking with, and learn from, your fellow chapter members.

Our Design Class was an overview of Sanitary and Vent Systems by a first-time presenter. EMC Treasurer, AYP Liaison and mechanical engineer Rachel Gendich shared her knowledge about these systems for the benefit of our members and guests and she did a fantastic job! You can watch a replay of her class on our YouTube Channel here: <https://youtu.be/SvOEu0mQxLc> (you may need to copy and paste the link in your browser).

Our Technical Presentation was a lively discussion about Interceptors, the different types and applications and how to size them, by returning presenter Silvano Ferrazo of Zurn. You can watch a replay of his presentation on our YouTube Channel here: <https://youtu.be/4wlGmcy1fuE> (again, you may need to copy and paste the link in your browser).

Next month, we'll be learning about Storm Systems, taught by EMC President Bill Grayzar. This will be the third in our series that counts towards attendance if you're interested in a free copy of CPD Study Guide, and we're grateful Bill returning to the stage for second time this season.

The Technical Presentation will be a discussion about the different options for water treatment. We'll have a panel of experts on hand to share their knowledge about this topic. It should be both educational and entertaining!



We'll also be collecting toys for the Engineering Society of Detroit Holiday Toy drive, so if you're in the giving mood, please feel free to bring a new, unwrapped toy to the meeting so we can donate it to one of the many deserving children in our area. These kids did not create the situation they're in, so please consider bringing something to help give them a little hope this holiday season.

As always, please reach out to me if you have any questions.

Your Chapter VP Tech,
Pam Hartsell
vpt.aspe.emc@gmail.com

**Plumbing
Engineering
Design
Handbook**

VOLUME THREE

Special Plumbing
Systems



**ASPE MEMBERS NOW HAVE ACCESS
TO THE NEW UPDATED VERSION OF
THE PLUMBING ENGINEERING
DESIGN HANDBOOK - FOR FREE!**

Click here to find out more.

VP Legislative Report

William Grayzar, CPD



Code update notifications!

On November 13, 2023 the **2021 Part 7 MPC** (Michigan Plumbing Code), **2021 Part 9a MMC** (Michigan Mechanical Code) and the **2021 Part 8 MEC** (Michigan Electrical Code) were filed with the State of Michigan Bureau of Construction Codes and **will go into effect on March 12, 2024**, according to the State

of Michigan's department of Licensing and Regulatory Affairs (LARA) website. The 2021 Part 4 MBC (Michigan Building Code) and the 2021 Michigan Rehabilitation Code filing and effective dates are pending.

The 2018 Part 7 MPC was and will be the only 2018 code to be enacted and adopted in Michigan. The State of Michigan opted not to adopt any other codes in 2018 and move directly to the 2021 Michigan Codes which will adopt by reference the 2021 editions of the International Codes and the 2023 edition of the NEC along with amendments, deletions, and additions deemed necessary for use in Michigan.


The Code Study Development Group of Southeastern Michigan is currently offering the 2021 International Codes for Sale and purchase and will be offering the 2021 Michigan Codes as they become available. Refer to order sheet included in this newsletter.

On the national level the ICC (International Code Council) and IAPMO are currently accepting code change proposals for modifications to the 2024 International and Uniform model codes. Approved code changes will be enacted into the 2027 editions of the model codes. The deadline for code changes proposals for the model codes are January 8, 2024 for the International Codes and January 12, 2024 for the Uniform Codes.

If there is an area of the code that you feel requires a modification and/or addition, feel free to reach out to any EMC-ASPE Board Member to discuss further. We are also willing to help you with preparing a code change proposal.

Wishing you safe and Happy Holidays!

Bill



2024 CPD Exam

REGISTRATION
Opening Soon

▶ **Exam Dates: April 15-26**

CERTIFIED IN
PLUMBING
DESIGN

A large banner with a dark blue background and light blue/green text. The text reads "2024 CPD Exam" in large green letters, "REGISTRATION Opening Soon" in large blue letters, and "Exam Dates: April 15-26" in smaller blue letters with a play button icon. In the bottom right corner, it says "CERTIFIED IN PLUMBING DESIGN" in blue letters. A hand cursor icon is pointing at the top right of the banner.

VP Membership Report

Josh Pedraja



We want to welcome in a few new members to our Chapter and ASPE Family; Haruka Iwasaki of Diversified Spec Sales and Ashley Collins of SES!! Welcome to the ASPE Family!!

The holiday season is upon us and Thanksgiving is the first holiday checked off the list. If anyone has the opportunity while shopping for Christmas gifts, please consider donating a gift or two for Toy Drive that our chapter participates in each year with the Engineering Society of Detroit.

This month is going to be light reading as most are busy preparing for company holiday parties, friend holiday parties and family visiting or traveling to family. I want to wish everyone a Merry Christmas!!!

Golf update 2024: SAVE THE DATE! Tuesday, June 11th 2024 is our 2nd Annual Golf Outing. It will be held again at The Links of Novi in Novi. Stay tuned for more information!

ATTENTION STUDENTS:

DID YOU KNOW that ASPE also offers scholarships to qualifying students up to \$5,000?! Please check out the Alfred Steele scholarship at <https://www.aspe.org/membership-global-community/membership/alfred-steele-scholarship-application/> for more information and application. **The deadline for entry is January 31st 2024.**

This scholarship is named in honor of Alfred Steele, PE, a long-time member of the American Society of Plumbing Engineers and a visionary and pioneer in advocating education and professional development for plumbing engineers and designers.

Connect with and Follow us on LinkedIn (ASPE Eastern Michigan Chapter). We have up to date announcements and different posts that are educational, entertaining and informative on current events happening in our Plumbing World!

Membership renewal! If you are up to renew your membership, remember to do it today! We don't want to see you go!! There is a new option to be apart of multiple chapters! If you are interested, please keep The Eastern Michigan Chapter as your home chapter and signup for as many others as you wish for only \$80 per chapter. You can also take advantage of Multiple-Year Membership Renewal. Save on your ASPE membership dues if you join or renew for more than one year! • 5% Discount for a two-year renewal. • 10% Discount for a three-year renewal.

Current Members: Let's not forget our mission to bring in fresh faces – we're all about embracing and empowering younger members. They bring new energy and ideas that keep us on our toes and moving forward. Together, we're building something fantastic here, and we're grateful for each one of you who's part of it. I feel this is a great time to challenge you to invite someone to join our chapter! As always, the Eastern Michigan Chapter of ASPE is looking for new members! Do YOU know of any?? Anyone that would benefit in Plumbing Technical Publications – Plumbing Convention and Technical Symposiums - Certifications in Plumbing Design – Plumbing Codes and Legislation – Continued Education Programs and networking with peers throughout the plumbing industry. Please send them my email address and we'll get them signed up with this great organization. vpm.aspe.emc@gmail.com



The only news site dedicated exclusively to ASPE, our members, and the plumbing engineering industry



@aspeyoungprofessionals



REGION 2 AYP WEBINAR



ASPE Young Professionals



December 15th, 2023

11am - 12pm

MedGas 101

Learning Outcomes

- 1) Basic Code Principles
- 2) General Knowledge of Medgas Equipment
- 3) Pipeline Products
- 4) Source Equipment



Josh Pedraja
Pattons Medical



www.aspe.org

[register now](#)

Member Birthdays

DECEMBER BIRTHDAYS



Gary Steffen	12-02
Adrienne Bennett . . .	12-05
Rufina Golshteyn . . .	12-12
Joseph Hernandez . .	12-14
Jessica Laming	12-14
Josh Pedraja	12-15
Zvonko Dimitrieski .	12-16
Pam Hartsell	12-17
John Nussbaum	12-22
Rachel Gendich	12-23

* Member birthday list provided by VP Membership, Josh Pedraja

CELEBRATE EACH DAY LIKE IT'S YOUR BIRTHDAY!!





In celebration of
World Plumbing Day
the EMC-ASPE will be
hosting the following
event at the
March 12th, 2024 meeting:



NASPE racing is a timed race similar to a Pinewood Derby Race utilized in the Cub Scouting Program around the world.

The NASPE Race is themed to celebrate World Plumbing Day.

World Plumbing Day is an international event held every year on March 11 and was initiated by the World Plumbing Council to celebrate the important role plumbing plays in the health and safety of modern society.



EMC-ASPE is encouraging chapter members to design, build and race cars in celebration of World Plumbing Day. A raffle along with trophies, awards and prizes will be provided at the event. Based on the number of entries awarded may be provided for:

- Fastest race time (1st, 2nd and 3rd Place)
- Best representation for World Plumbing Day
- Best representation of a plumbing product.
- Best representation of a plumbing tool.
- Best green design

**Car Kits are Free to all EMC-ASPE Members
you can contact any of the chapter board
members!**

DINNER – RACING - PRIZES

EMC-ASPE Board members will serve as Official Judges for the event and William Grayzar chapter President will serve as the race moderator and official.

OFFICIAL RACE AND ASPE TECHNICAL MEETING:

WHEN: Tuesday, March 12th, 2024.

WHERE: Plumbing Industry Training Center located at 1911 Ring Drive in Troy, Michigan

AGENDA:

- | | |
|---------------------------------|---|
| ➤ Design Class | 5:00 P.M. till 6:00 P.M. |
| ➤ Race Registration & Weigh-In: | 6:00 P.M. till 6:30 P.M. |
| ➤ Dinner | 6:00 P.M. till 6:30 P.M. |
| ➤ Technical Session | 6:30 P.M. till 7:30 P.M. |
| ➤ NASPE Race | 7:30 PM till completion (approx. 8:00 P.M.) |



CODES AND STANDARDS for NASPE Racing are as follows:



OFFICIAL RACE CAR DESIGN BUILD KIT:

1. Official Race Car Kits must be the same as those used for the Cub Scouting program pinewood derby races. Car kits will be available at the ASPE Technical meetings, or they can be obtained by contacting an ASPE board member. The **kits are free for members** and will be available at the December, January and February technical meetings. Official car kits may also be purchased from your local scout store.
2. If you have a child, grandchild, nephew, etc. involved in Cub Scouting, please feel free to use their car for the NASPE race, provided it meets the Specification for Construction requirements. Car must still be registered and weighed-in on the night of the event to be eligible for prizes.
3. Participants may enter more than one (1) car for the event, but only the first car kit is free. Additional kits can be purchased at a cost of \$6.00 each.



CAR SPECIFICATIONS FOR CONSTRUCTION: (Also see sheet included with your official car kit).

1. WEIGHT: 5 ounces **maximum** (but can be lighter). Min. weight of 4 ounces is suggested.
2. LENGTH: 7 inches **maximum** (but can be shorter).
3. WIDTH: 2 3/4 inches **maximum**, and 1 3/4 inches **minimum** between the front wheels and the same between the rear wheels. Otherwise, your car will not fit over the track guide rail.
4. CLEARANCE: 3/8 inches **minimum** from bottom of car to track (rail) top. Otherwise, your car will not clear the track guide rail.
5. WHEELS: You must use the wheels supplied with your official car kit (or similar BSA official racing wheels available at your local scouting shop).
6. Axles do not necessarily have to be placed in the pre-drilled slots, but the axle (nails) supplied in your car kit **MUST** be utilized.
7. **NO**, bearings, moving or loose parts are allowed **ANYWHERE** on or in the car.
8. The car shall not ride on any kind or type of spring.
9. Graphite (or dry lubricant) may be added to the wheels until the car is registered and weighed-in, but not after. **No Liquid or oil base lubricants will be allowed** as they can ruin the racing surface.
10. Magnets are not allowed anywhere on the car as they may interfere with the timing system.

REGISTRATION AND WEIGH-IN PERMITS:

1. All cars must be registered and weighed-in to be eligible to participate in the event.
2. Your official car number will be provided during registration and weigh-in period.
3. Cars will be impounded (retained) by the race staff until completion of the event at which time they will be returned to the participants.
4. If a car is not in compliance with the codes and standards outlined above it will be disqualified and will not be eligible to receive trophies and awards. However, at the discretion of the race official the car may still be allowed to race.
5. If you are unable to be present for the registration and weigh-in period, but still wish to participate, please contact the EMC-ASPE Board or the race official to make arrangements register and weigh-in car prior to March 12th, 2024.

“Good Luck and Have FUN Racing”



ASPE Mentoring Program

The Women of ASPE are excited to introduce ASPE's new Mentoring Program!

This program, which is available to all members of the Society, has been designed to connect ASPE members who have a particular skill set (mentor) with individuals (mentee) who are searching to acquire the same skills to develop and make progress toward their personal and professional goals.

Who Is a Mentor?

A mentor is someone who can help the mentee develop skills for success and long-range career planning, is able to be a good listener, is willing to share experiences and views, is willing to commit time and effort, provides an "open door" to questions and problems, points out both strengths and opportunities for improvement, and has a vested interest in the growth and development of their mentee.

Benefits to the mentor:

- Satisfaction in helping someone mature, progress, and achieve goals
- Meeting and sharing experiences with other mentors
- Personal ongoing support to help the mentee succeed
- Personal fulfillment through contribution to the Society and the individual

Who Is a Mentee?

Having a mentor can contribute to a successful and satisfying career. Without a mentor, that learning occurs mostly through trial and error. With a mentor, even experienced professionals can benefit from the experiences and expertise of someone who has withstood the trial and can help the mentee avoid the mistakes. Similarly, those new to the industry will discover that being a mentee shortens the learning curve for acquiring the skills and knowledge most critical to a fruitful career.

Benefits to the mentee:

- Discover new talents about yourself
- Career satisfaction
- Expand your personal network
- Maximize your strengths

For more information click below:

<https://connect.aspe.org/aspe-mentor-match/mentoring>





Women of ASPE[®]

Learn more about our group!

WOA is dedicated to **engaging, retaining,** and **advancing** women in the plumbing design industry through:

- > Mentoring programs
- > Membership outreach
- > Partnerships with industry-related associations
- > Educational and leadership offerings

And more!

Email rrodriguez@aspe.org and visit aspe.org

Exclusive WOA Sponsor





EASTERN MICHIGAN

2ND ANNUAL GOLF OUTING



TUESDAY, JUNE 11, 2024



**THE LINKS OF NOVI
NOVI, MICHIGAN**

VE Sales merges with Sales Service Plus

Cindy Zatto

czatto@salesserviceplus.com

810-343-2713



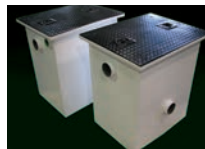
Highland Tank®

- Aboveground & Underground Oil/Water Separators
- Oil Sand Interceptors
- Elevator Sump Pump Interceptors
- Manual Oil Interceptors
- Advanced Filtration Systems

Sales Service Plus has merged with VE Sales. We look forward to working with you!



Elevator Sump Pump Interceptors



Manual Oil Interceptors



Oil/Water Separators



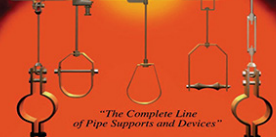
Elevator Oil Interceptors

www.highlandtank.com | 814-893-5701

Pipe Hangers & Devices

Catalog No. 493

PHD



"The Complete Line of Pipe Supports and Devices"

PHD Manufacturing, Inc.
4418 Columbia Way, Suite 100
Columbus, Ohio 43228
Phone: (614) 313-2730 • (614) 483-3036
Fax: (614) 483-2782 • www.phdinc.com

Strut Products & Accessories

Catalog No. 79



"The Complete Line of Strut Products & Accessories"

PHD Manufacturing, Inc.
4418 Columbia Way, Suite 100
Columbus, Ohio 43228
Phone: (614) 313-2730 • (614) 483-3036
Fax: (614) 483-2782 • www.phdinc.com

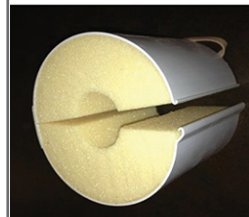
Snappitz - Self locking Insulated Pipe Supports



SNAPP ITZ

15 Seconds to Install

LEEDS Friendly – with higher insulative equalities and 17% recycled materials used in Polyisocyanurate Foam



Snappitz Thermal Insulated Pipe Shields are currently being installed throughout this Ford Blue Oval project.

We make rooftop supports easy.



Since 1982 | Easy to Work With
20 year warranty | Made in USA
Learn more at miroind.com

MIRO
INDUSTRIES, INC.
ROOFTOP SUPPORT PRODUCTS

QLS SERIES

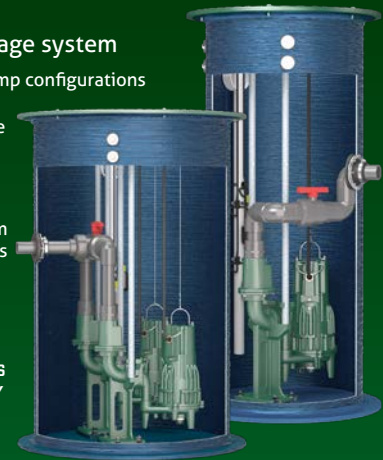
PREFABRICATED LIFT STATIONS WITH Z-RAIL® TECHNOLOGY

Choose your package system

- Single or multiple pump configurations
- Effluent, sewage, grinder, or progressive cavity pumps

Zoeller's Z-Rail® System and guide rails provides quick and easy pump removal

All Zoeller products are 100% FACTORY TESTED.



ZOELLER **PUMP COMPANY**



The New Standard in Tank Lining Protection



Only Bradford White comes standard with Vitraglas® tank lining featuring Microban®.

- **Vitraglas®** provides unsurpassed protection from the corrosive effects of water.
- **Microban®** antimicrobial product protection helps prevent the growth of bacteria, mold and mildew on the surface of the tank lining.



Represented By:



Microban® antimicrobial product protection helps prevent the growth of bacteria, mold and mildew that may affect the product. The built-in antimicrobia properties do not protect users or others from disease-causing organisms. Microban® is a registered trademark of Microban Products Company. ©2023, Bradford White Corporation. All rights reserved. BWFACL0423

Replacing Your Water Heater Every Few Years is Not Our Business Plan



Conquest[®] condensing, gas-fired water heaters are constructed from AquaPLEX[®] duplex stainless steel so they're corrosion-resistant in potable water at any temperature. Available in 199-1000 MBH, Conquest provides even more BTUs in small spaces and fits through a standard 36-inch doorway. With a thermal efficiency of up to 96%, long product life and a 15-year tank and heat exchanger warranty, you can't afford not to have one.

Call R.L. Deppmann or visit our Monday Morning Minutes blog at deppmann.com for information on PVI Water Heaters
800.589.6120



800.784.8326 | pvi.com

NOVEMBER MEETING

THANK YOU TO OUR SPONSORS!

**Balfrey Johnston
Kennedy Solutions
Sales Service Plus
Taggart Knight
Burke Agency
Major Lozuaway
Coda US**

THANK YOU TO OUR ATTENDEES!

**Ross Beck
Chip Bidigare
Brian Burke
Theresa Card
Dawn Fischhaber
Maureen Finn
Robert Frey
Rachel Gendich
Vera Gjakaj
William Grayzar**

**Pam Hartsell
Dann Holmes
Haruka Iwasaki
John Johnson
Rick Johnston
Trent Johnston
George Johnston II
Jessica Laming
Ryan Lyle
Jeremy Martin**

**Sean McIntosh
Michael Melaragni
Brenda Pesmark
Kenyatta Ribeiro
Gary Taggart
John Taylor
Bob Thomas
Brandon Watts
Cindy Zatto**

NOVEMBER MEETING PHOTOS



EMC Treasurer and Mechanical Engineer Rachel Gendich presented on Sanitary and Vent Systems



Returning speaker Silvano Ferrazo of Zurn presented on Interceptor types, sizing and application

NOVEMBER MEETING PHOTOS



Congratulations to Bob Frey for being our November raffle winner!

NOVEMBER MEETING PHOTOS



A view from the back of the room! Nice Crowd!



We had great attendance at our sponsor tables!

NOVEMBER MEETING PHOTOS



EMC President Bill Grayzar presented Rachel Gendich with a Certificate of Appreciation



EMC President Bill Grayzar presented Silvano Ferrazo with a Certificate of Appreciation

TOPGOLF AUBURN HILLS: QuantumFlo Booster, Beeco RPZ, & Beeco Automatic Control Valve



GM Flint Assembly Plant: Hubbell Model EMV120-85-1.5SLA-A-XX Electric Tepid Water Heater



Velocity Boiler, Previously Crown Boiler

CRANE PUMPS & SYSTEMS

CRANE PUMPS & SYSTEMS



BOILERS & COMBINATION UNITS

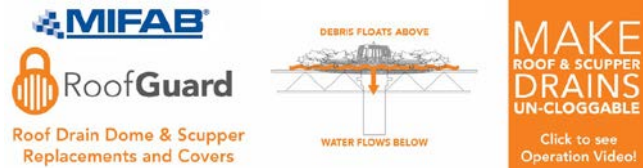
RIELLO

Energy For Life



QUALITY WATER & AIR: (248)589-8010

MIFAB PRODUCT LINE





EDUCATION



PUBLIC VENUES

COMMERCIAL OFFICES

T&S IS HERE >

T&S is proud to be a trusted name across a wide range of markets — staying at the forefront of today’s evolving industry and providing a vast selection of reliable solutions that meet required codes and compliances.

Learn more at tsbrass.com/markets.

Find us in



HEALTHCARE



T&S plumbing products represented in Eastern Michigan by: Diversified Spec Sales - 248-398-2400



New Century Sales, Inc.
Manufacturer's Representatives



COPPERPRESS® SYSTEM BENEFITS

- Size range from 1/2” to 4”
- Green visual application bands
- Consistent wall thickness on all products
- Leak before press systems
- Less equipment required
- Compatibility of fittings and tools

www.copperpress.com

Approvals & Certifications

- NFS ANSI/CAN 61
- UPC
- cUPC
- IPC
- IAPMO PS-117
- ICC-ES-PMG
- ASME B16.51



ISOTUBI USA

Stainless Steel Press Solutions

<https://isotubi-usa.com>

Represented by New Century Sales:

WEST MICHIGAN

Michael Zago
C (616) 293-2121

E mikez@newcenturysales.com

WEST MICHIGAN

Rod Cox
C (616) 706-1481

E rodcd@newcenturysales.com

EAST MICHIGAN

Todd Hiler
C (513) 633-2609

E todhd@newcenturysales.com

EAST MICHIGAN

Ross Beck
C (734) 673-2119

E rossb@newcenturysales.com

www.newcenturysales.com

MegaPress® G

Press safer.
Press
bigger.



Connected in quality.

Quick, safe connections on large diameter gas lines.

Viega MegaPress(R)G requires no open flames or added cost of fire watch, so projects are safer and more profitable. Installers can secure gas pipe up to 4" in 16 seconds or less, saving 60-90% on labor costs. That's why professionals choose MegaPressG - the trusted press connection method approved for gas lines 1/2" to 4".

Michael Norgan
District Sales Manager
(989) 415-2431
michael.norgan@viega.us

ALL-IN-ONE SCALD PROTECTION



420-T Series

Now there's no need to install a thermostatic mixing valve below the sink. The new 420-T Series combines Chicago Faucets durability with integrated scald protection. The result is a solid, easy-to-install restroom faucet that complies with ASSE 1070 requirements. With the 420-T, everything you need to meet current building codes and protect users against scalding is built right into the faucet.

Visit chicagofaucets.com or call your local representative for more information.

Taggart-Knight Group
248/553-4388
info@taggartknight.com





New Century Sales, Inc.
Manufacturer's Representatives

EAST MICHIGAN
1715 Traditional Dr.
Commerce Township, MI 48390
P (248) 960-1147 F (248) 960-1149

WEST MICHIGAN
550 36th St. SE
Grand Rapids, MI 49548
P (616) 600-9660

 AMTROL Expansion Tanks www.amtrol.com	 BASCO Shower Doors www.bascoshowerdoor.com	 Bradley Washroom Solutions www.bradleycorp.com	 CALEFFI Hydronic Solutions Hydronic Accessories www.caleffi.com/usa/en-us	 COPPER PRESS ISOTUBI USA STAINLESS STEEL SOLUTIONS Plumbing Fittings www.copperpress.com www.isotubi-usa.com											
 FAIRMONT designs Furniture Integration Bath Furniture www.fairmontdesigns.com	 FIAT PRODUCTS Specialty Products & Plumbing Fixtures www.fiatproducts.com	 General Wire Spring Company Sewer Cleaning Machines www.drainbrain.com	 genova PVC Products www.genovaproducts.com	 IBC Better Boilers www.ibcboiler.com											
 MATCO NORCA Valves and Fittings www.matco-norca.com	 MYERS™ Water and Waste Pumps www.femyers.com	 Oasis Fiberglass & Acrylic Tub & Showers www.oasisbath.com	 OSIS Oasis Water Coolers www.oasiscoolers.com												
 OATEY SCS Supply Chain Services       www.oatey.com	 Panasonic USA Bath Fans https://na.panasonic.com/us/home-living-solutions/ventilation-indoor-air-quality/	 PEXGUN AUTOMATIC PEX PIPE TIE TOOL Pipe Installation Tools https://pexgun.com/													
 REHAU Unlimited Polymer Solutions PEX Plumbing Products www.rehau.com/us-en	 Rheem RUUD Water Heaters www.rheem.com www.ruud.com	 STRASSER woodenworks Bathroom Vanities & Cabinets www.strasserwood.com	 TURBOTORCH BRAZING Brazing & Soldering https://www.esabna.com/us/en/products/gas-equipment/brazing-and-soldering/index.cfm												
 StanleyBlack&Decker		 LIXIL Link to Good Living <table border="0" data-bbox="224 1583 1403 1734"> <tr> <td data-bbox="245 1646 386 1688"></td> <td data-bbox="435 1640 558 1696"></td> <td data-bbox="607 1650 764 1682"></td> <td data-bbox="850 1650 1062 1682"><i>American Standard</i></td> <td data-bbox="1117 1640 1192 1696"></td> <td data-bbox="1276 1640 1354 1696"></td> </tr> <tr> <td>www.dewalt.com</td> <td>www.irwin.com</td> <td>www.lenoxtools.com</td> <td>www.americanstandard-us.com</td> <td>www.dxv.com</td> <td>www.grohe.us/en_us</td> </tr> </table>					<i>American Standard</i>			www.dewalt.com	www.irwin.com	www.lenoxtools.com	www.americanstandard-us.com	www.dxv.com	www.grohe.us/en_us
			<i>American Standard</i>												
www.dewalt.com	www.irwin.com	www.lenoxtools.com	www.americanstandard-us.com	www.dxv.com	www.grohe.us/en_us										

www.newcenturysales.com



KERR PUMP AND SUPPLY

12880 Cloverdale, Oak Park, MI 48237

248-826-9414 tpaichak@kerrpump.com www.kerrpump.com

Liquid Pumps
Vacuum Pumps
Heat Exchangers
Blowers
Related Equipment
and Accessories

Sales • Service • Repair



PENTAIR FIRE PUMPS AURORA®

Compact Fire Pump Systems

- UL Listed/FM Approved NFPA-20
- UL Listed/FM Approved Controller NFPA-20
- Capacities of 50-750 Gpm.
- Pressures of 40-160 Psi.

Vertical Split Case Electric Drive Fire Pump

- Electric Driven
- For Commercial, Industrial and Marine use only.
- UL Listed/ FM Approved/NFPA-20 Design

Horizontal Split Case Diesel/Electric Drive Fire Pump

- Diesel and Electric driven available.
- Flows at 250 gpm to 5000 gpm.
- Pressures available up to 490 Psi.

Ask us about our Red-Hot Quick Shipping Program!

We test fire pumps
for annual and
acceptance
requirements.



www.aurorapump.com

Michigan's Oldest Supplier of Pumps and Process Equipment - 1905



Pattons medical

Medical Air Systems*

- Oil-Less Scroll
- Oil-Less Reciprocating
- Oil-Free Rotary Screw
- Oil-Flooded Reciprocating Control & Instrument Air Systems



Medical Vacuum Systems*

- Contactless Claw
- Lubricated Rotary Vane
- Dry Rotary Vane



Medical Pipeline Products*

- Manifolds
- Alarms
- Zone Valve Boxes
- Outlets
- Lab Pipeline Equipment
- Accessories



* Meets or exceeds NFPA 99-2021 Edition Health Care Facilities Code

www.pattonsmedical.com



32995 Industrial Road, Livonia, MI 48150

Phone 734.266.5300 Fax 734.266.5310

www.performanceengineering.com

BRANDS WE REPRESENT



BRANDS WE DISTRIBUTE



Centrotherm



Intellihot



SINCE 1906
wessels
company

Natural Gas / Propane / Electric
85,000 to 10,000,000 BTU's
- ALSO -
Holby Thermostatic Mixing Valves



ETV *Platinum Plus*

ELECTRONIC TEMPERING VALVE



Designed for Critical Temperature DHW Application

- Maintains Set Point within +/- 2°F

Safeguard Against High Temperature Conditions

- Optional High Temp Limit Valve
- Alarm Output

Maintenance Free

- Stainless Steel Valve Body reduces Scale Buildup
- External Actuator Eliminates Gasket Maintenance



ETS AND ETS-LT

ELECTRONIC TEMPERING STATION

Pre-wired and Pre-Piped Assembly

- Contains ETV Platinum Plus
- Includes all Fittings, Isolation Valves

Wall Mounted and Floor Mounted

- Minimal Footprint
- Sizes from 3/4" to 4"



Conforms to the following:

ASSE 1017

California Lead Free Plumbing Law

CSA B 125.3 (NSF/ANSI 61 Section 8)



Major Lozuaway and Associates

Mike Ostrowski

1117 W. Grand Blanc Road

Grand Blanc, MI 48439

Phone: 810-287-6983

Email: moski@lozuaway.com

BALFREY & JOHNSTON, INC.

Manufacturers' Representatives
13050 Northend
Oak Park, MI 48237
Ph 313 864-2800 Fax 313 864-7219
George D. Johnston: george@balfrey-johnston.com
balfrey-johnston.com

J.W. SALES, INC.

Manufacturers' Representative
1570 E. Highwood
Pontiac, MI 48340
O: 248.745.8590 F: 248.745.0889
Thomas Huck: thomash@jwsalesinc.net
C: 248-602-1575
Michael Fedorinchik: mikef@jwsalesinc.net
Jwsalesinc.net

BURKE AGENCY, INC.

Manufacturers' Representatives
2605 E. Oakley Park Road, Suite A,
Commerce Twp, MI 48390
Ph 248 669-2800 Fax 248 669-3310
Brian Burke, Peter Lapham, John Taylor
bburke@burkeagency.com
burkeagency.com

KERR PUMP AND SUPPLY

Manufacturers' Representatives
12880 Cloverdale
Oak Park, MI 48237
Ph 248 543-3880 Fax 248 543-3236
Tyler Palchak: tpalchak@kerrpump.com
Direct: 248-826-9414
kerrpump.com

DALE PRENTICE COMPANY

Manufacturers' Representatives &
Application Engineering Solutions Provider
26511 Harding Avenue
Oak Park, MI 48237
Ph 800 536-4700 Fax 248 339-5559
Michael Cullen: mcullen@prenticeco.com
Mobile 248 302-5924
prenticeco.com

LOCHINVAR

High Efficiency Water Heaters and Boilers
45900 Port Street
Plymouth, MI 48170
Ph 734 454-4480 Fax 734 454-1790
Jason Loverich: jloverich@lochinvar.com
lochinvar.com

DAVE WATSON ASSOCIATES, INC.

Manufacturers' Representatives
1325 W. Beecher St.
Adrian, MI 49221
Ph 517 263-8988 Fax 517 263-2328
Rick Johnston: rjohnston@davewatson.biz
davewatson.biz

MAJOR/LOZUAWAY & ASSOCIATES, INC.

Manufacturers' Representatives
1117 W. Grand Blanc Rd.
Grand Blanc, MI 48439
Ph 810 234-1635 Fax 810 234-8389
Mike Ostrowski: moski@lozuaway.com
Mobile 810 287-6983
Bill Campbell, PE: bill@lozuaway.com
Mobile 810-287-0029

**DIVERSIFIED SPEC. SALES, INC./
HOWLEY AGENCY SALES CO.**

Manufacturers' Representative
13261 Northend Ave.
Oak Park, MI 48237-3265
Brendan Burdette: bburdette@dsshowley.com
Ph 248 398-2400 Fax 248 547-4905
diversifiedspec.com

NEW CENTURY SALES, INC.

Manufacturers' Representatives
1715 Traditional Dr.
Commerce Township, MI 48390
Ph 248 960-1147
Ross Beck: rossb@newcenturysales.com
Mobile 734 673-2119
Todd Hiler: toddh@newcenturysales.com
Mobile 513 633-2609
newcenturysales.com

HS/BUY VAN ASSOCIATES, INC.

Manufacturers' Representatives
56 S. Squirrel
Auburn Hills, MI 48326
Jarrett Armstrong
Ph 888 472-8982 Fax 248 852-0298
info@hsbuyvan.com
hsbuyvan.com

PAULA. BAKER

ASSE Region #4 Director - Mid West
ASSE International
18927 Hickory Creek Drive, Suite 220
Mokena, IL 60448
Ph 313 399-3072 Fax 248 585-1437
Paul Baker: paul.baker@ualocal98jatc.org
www.asse-plumbing.org

PERFORMANCE ENGINEERING GROUP

Engineered Water Products
32955 Industrial Rd.
Livonia, MI 48150

Alan Deal: adeal@performanceengineering.com
Ph 734 266-5300 Fax 734 266-5310
performanceengineering.com

R.L. DEPPMANN COMPANY

Manufacturers' Representatives
46575 Magellan Drive
Novi, MI 48377

Gerry Potapa Jr., CPD, Paul Prentice, LEED AP®
Mark Fine, LEED AP®, Chris Lieder
Ph 800 589-6120 Fax 248 354-3763
sales@deppmann.com
deppmann.com

PROGRESSIVE PLUMBING SUPPLY

Wholesale Distributor
31239 Mound Road
Warren, MI 48092

Ph 586 756-8662 Fax 586 756-9077
ppsupplyco.com

Locations: Warren, Detroit, Mt. Clemens, and Oxford

TAGGART-KNIGHT GROUP

Manufacturers' Representatives
37686 Enterprise Ct.
Farmington Hills, MI 48331

Gary O. Taggart - gary@taggartknight.com
Scott Taggart - scott.taggart@taggartknight.com
Ph 248 553-4388 Fax 248 553-4653
info@taggartknight.com
taggartknight.com

QUALITY WATER & AIR, INC.

Manufacturers' Representative
1402 Souter
Troy, MI 48083

Georgann Kummer, WBE
Ph 248 589-8010 Fax 248 589-8016
qualitywaterair@cs.com
qualitywaterair.com

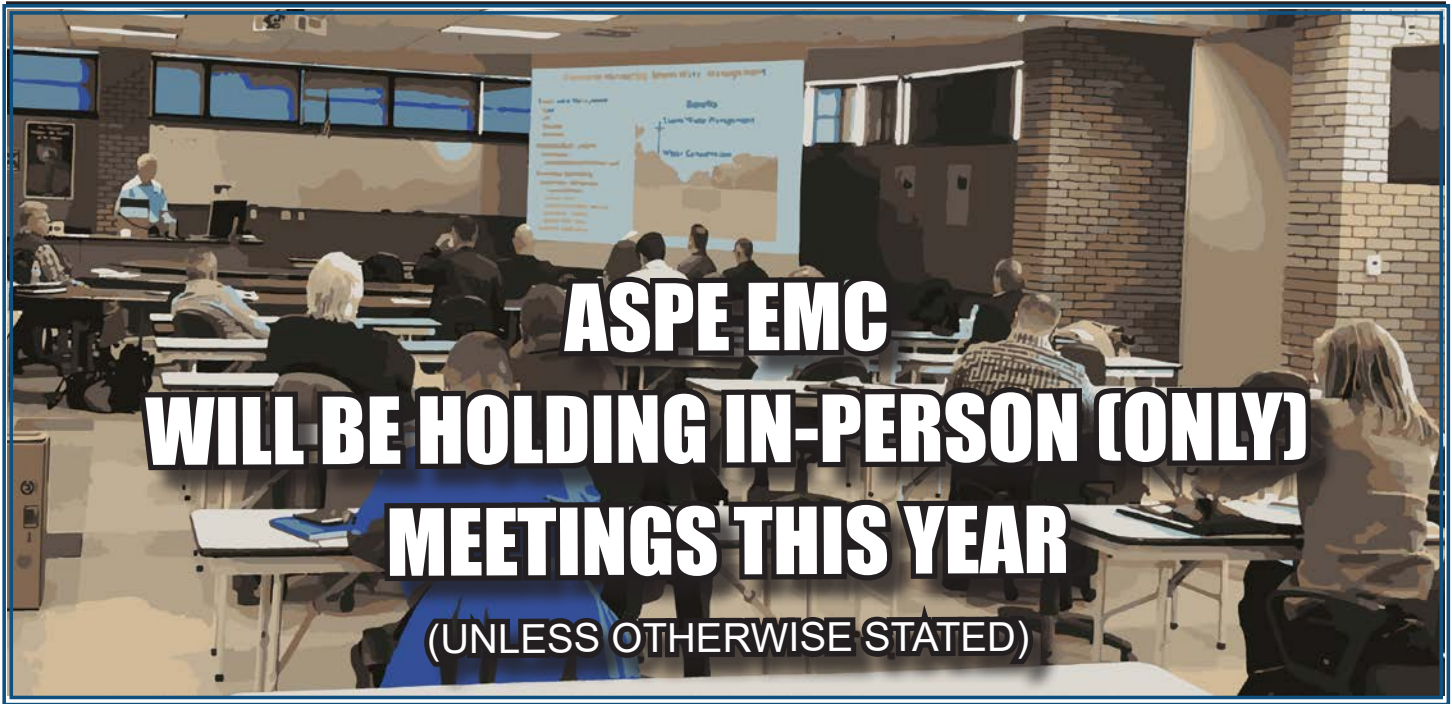
SERVICE SALES PLUS

"Service is our middle name"

45606 Mast Street
Plymouth, MI 48170
Ph 734-454-7620 Fax 734-454-7632
servicesalesplus.com



INCREASE
EXPAND
GROW
MULTIPLY



ASPE EMC WILL BE HOLDING IN-PERSON (ONLY) MEETINGS THIS YEAR (UNLESS OTHERWISE STATED)

2023-2024 ASPE EMC Board

President

William Grayzar, CPD
28150 Greenfield Rd.
Southfield, MI 48076
(248)569-1430 ext.333
bill@dsonline.com
president.aspe.emc@gmail.com

VP Technical

Pam Hartsell, CPD, PMP
Strategic Energy Solutions
4000 W. Eleven Mile Rd.
Berkley, MI 48072
(248) 399-1900 x 222
Fax: 399-1901
vpt.aspe.emc@gmail.com

VP Legislative

Ryan Lyle
Director of Training PITC
1911 Ring Drive
Troy, MI 48083-4229
248-585-1435 ext. 122
Ryan.Lyle@ualocal98jatic.org

VP Membership

Josh Pedraja
Toledo, OH | Central USA
4610 Entrance Drive, Suite H
Charlotte, NC 28273
616-307-5968
joshpedraja.aspe@gmail.com

Education Chair

Kristin Simoneaux, P.E., CPD
2338 Coolidge Hwy. #100
Berkley, MI 48072
(248) 336-4760
kristin.simoneaux@stantec.com

Treasurer

Rachel Gendich
Strategic Energy Solutions
4000 W. Eleven Mile Rd.
Berkley, MI 48072
(248) 399-1900
Fax: 399-1901
treasurer.aspe.emc@gmail.com

Administrative Secretary

George Johnston II
13050 Northend Ave
Oak Park, MI 48237
(313) 864-2800 Fax: 864-7219
george2@balfrey-johnston.com

Corresponding Secretary/ VP Social Media

Josh Pedraja
Toledo, OH | Central USA
4610 Entrance Drive, Suite H
Charlotte, NC 28273
616-307-5968
joshpedraja.aspe@gmail.com

Chaper Affiliate/Liaison

Chip Bidigare
23350 15 Mile Rd.
Berkley, MI 48035
586-755-3110 x 5938
chip.bidigare@merloenergy.com

AYP Liaison

Rachel Gendich
Strategic Energy Solutions
4000 W. Eleven Mile Rd.
Berkley, MI 48072
(248) 399-1900
Fax: 399-1901

WOA Liaison

Theresa Card, P.E., CPD,
LEED AP BD+C
Strategic Energy Solutions
4000 West 11 Mile Rd
Berkley, MI 48072
(248) 399-1900 ext 223
allethe@gmail.com

Directors

Michael Melaragni, CPD
38958 Lapham Drive | Livonia,
MI 48154-1014
(734) 591-9339
mjmelaragni@yahoo.com

Theresa Card, P.E., CPD,
LEED AP BD+C
Strategic Energy Solutions
4000 West 11 Mile Rd
Berkley, MI 48072
(248) 399-1900 ext 223

Brianne Hall, P.E., CPD,
LEED AP BD+C, GGP
FTC&H
39500 Mac Kenzie Dr. Suite 100
Novi, MI 48377
(248) 324-4780
bhall@fishbeck.com

Dann Holmes
(248) 921-0582
buildingwaterhealth@outlook.com



SPONSOR ADVERTISING OPPORTUNITY INFORMATION

ASPE EMC News is published 9 times per year - September through May.

Yearly advertising for a Business Card ad, which also includes a full Line Card in our sponsors guide:
\$200.00 for members and \$250.00 for non-members.

Graphic Ads - Full Year (9 Issues): Quarter page - \$250.00 ○ Half page - \$350.00 ○ Full page - \$550.00

Checks should be made payable to ASPE EMC and mailed to: Rachel Gendich – Treasurer
c/o Strategic Energy Solution, 4000 W. Eleven Mile Rd., Berkley, MI 48072

Email all digital artwork to: Theresa Green, Newsletter Editor at: theresa.m.green@outlook.com

Circulation 260 - Distributed to: Engineers, Contractors, Inspectors, and other industry professionals in Michigan.

PAY FAST, PAY EASY
Secure Payments Accepted By

