

DEC - MEETING AGENDA

DATE:

TUESDAY, DEC. 13, 2022

WHERE:

IN-PERSON ONLY

**Plumbing Industry Training Center
in Troy, MI**

5:00 PM - 5:50 PM

**Venting Session #3 - Horizontal Wet Vent
and Vertical Wet Vent**

5:50 PM - 6:15 PM

Vendor Table Top Presentations

6:15 PM

Dinner Service

6:30 PM - 7:30 PM

**NFPA 770
Hybrid Fire Extinguishing Systems**

REGISTRATION REQUIRED

IN-PERSON: <https://www.eventbrite.com/e/aspe-emc-december-2022-technical-program-tickets-476657865507>

SEE INSIDE COVER FOR TABLE OF CONTENTS

William Grayzar, CPD, GPD, FASPE President of ASPE EMC



I hope everyone has, or had, a Happy Thanksgiving! Some food for thought this holiday, depending on where you look, the estimated water used for raising one pound of turkey from farm to table varies anywhere from 200 to 500 gallons per pound, and even higher for ham. If we use a conservative figure of 300 gallons per pound that's 6,000 gallons of water for a 20-pound bird. Add in the water used to grow and prepare those sides, deserts and drinks consumed on Thanksgiving as well, and before you

know it you have a staggering amount of water that has been consumed in the production of your Thanksgiving feast. According to Louisiana DEQ, it takes over 42,000 gallons of water to grow and prepare the food for a typical Thanksgiving dinner for 8 people. The United Nations estimates that two-thirds of the world's population is projected to face water scarcity by 2025. In addition, climate change will likely continue to intensify water stress globally and increase water scarcity. Include the current low water levels being experienced in our water reservoirs, lakes and rivers and I think this would be a great time to time consider ways to reduce the water footprint of your next holiday feast. If your curious what an estimated water footprint for some of your Thanksgiving favorites or special recipes might look like, you can download a Water Footprint Calculator from Population Education at the following link:

<https://populationeducation.org/how-much-water-went-into-your-thanksgiving-feast/>

The site also includes some estimated water uses for many of the traditional sides, deserts, and drinks, along with ideas and suggestions for reducing the water footprint of your Thanksgiving meal. So, if you need something to be thankful for this holiday season, be thankful for the access and availability you currently have to safe clean drinking water.

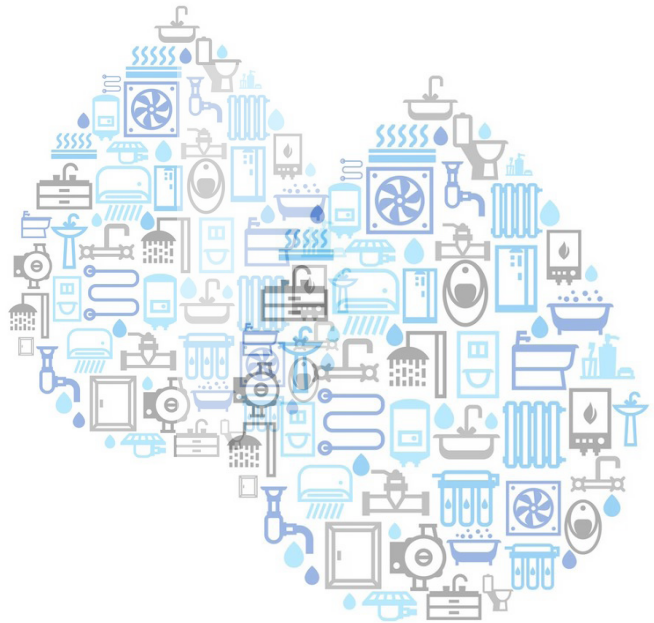
I wish everyone a safe and happy holiday and I look forward to seeing you at the Plumbing Industry Training Center on December 13, 2022.

Bill

NOTICES

Contents

President's Report	1
Program	3
In The Know	4
Member Spotlight	5
Holiday Toy Drive	6
VP Technical Report	7
VP Membership Report	8
ASPE EMC Golfing Event	9
Nov. Meeting Attendance	11
Nov. Meeting Photos	12 - 14
Mentorship	22
Code Study & Development Books . . .	23
Line Card Sponsors	24 - 25



DECEMBER BOARD MEETING

Virtual Online Meeting
Tuesday, 12/6/22, 4:30 PM

DECEMBER PROGRAM

In-Person Only
Tuesday, 12/13/22, 5:00 - 7:30 PM

HOLIDAY TOY DRIVE

Tuesday, 12/13/22, 5:00 - 7:30 PM
 Help us bring joy to a child this holiday.
 See flyer on pg. 6 for more info.

**ASPE IS ACCEPTING APPLICATIONS
 FOR THE ALFRED STEELE SCHOLARSHIP**

Contact ASPE National for more informa-
 tion at (847) 296-0002,
 or email info@aspe.org

SAVE THE DATES!

2023 TECH SYMPOSIUM
 Bellevue, WA
 9/28/23 - 10/1/23

**2024 CONVENTION &
 EXPO**
 Columbus, OH
 10/18/24-10/23/24

DECEMBER DESIGN SESSION

5:00-5:50 PM

TOPIC: Venting Session #3 Horizontal Wet Vent and Vertical Wet Vent



Michael Melaragni

Presenter: [MICHAEL MELARAGNI, CPD](#)
*former Director, Plumbing Industry
Training Center*

Michael Melaragni has numerous years of experience in the industry. He is a certified instructor of journey workers and apprentices and a certified training coordinator with the United Association of Plumbers and Pipefitters, a licensed Master Plumber with the State of Michigan and is the former Director of Training for Plumbers Local 98 Apprenticeship program.



Rob Murley

Presenter: [ROB MURLEY](#)
*Instructor, Plumbing Industry Training
Center*

Rob Murley is a licensed journeyman plumber and member of UA Local 98 in Detroit Michigan. Rob has been a full time instructor at our training facility since May of 2021 and fulfilled his apprenticeship with Local 98 between 2004-2009. Rob's experience stretches from light commercial work to heavy industrial work. Working on schools, restaurant/retail stores, apartments/lofts, hospitals, auto plants, blast furnaces, and several projects at the U.S. steel main plant throughout his career. Murley has also worked as foreman on various jobs, including running crews on larger jobs to running entire jobs. Some of the classes he instructs are: Trade Related Math; Pipes; Fittings; Valves and Fasteners; Use and care of tools; Drainage; Michigan State Plumbing Test Prep; Tube Bending; Natural Gas Piping and Venting; and UA Star Exam Preparation. Currently Murley is transitioning to add in the Science and Water Supply classes. Certification include Medical Gas Installation and Backflow Testing. Murley is currently working towards becoming a certified instructor for these classes.

New This Year:

Venting Classes - attend all 7 to earn a venting design manual.

About Registration and CEUs:

You will need to register using an Eventbrite link that will be in the email. This allows us to know how many people we can expect. We require sign in/sign out sheets and your CEUs will be submitted to national within 1 week of our event. It may take up to another 2 weeks for the CEUs to show in your ASPE Education log. The PITC does have guest protocols we will have to obey in order to meet there, so please follow all posted signage and procedures.

DECEMBER TECH SESSION

6:30-7:30 PM

TOPIC: NFPA 770 Hybrid Fire Extinguishing Systems

This month we'll be learning about hybrid systems (nitrogen and water), with a high-level explanation of hybrid media and how the technology works. We'll get an overview of NFPA 770, The Standard on Hybrid Fire Extinguishing Systems. We'll also learn the basics about specially listed sprinklers and their functions, such as those for ESFR, CMSA, Attic, and Combustible Concealed Spaces.



Karl Wiegand

Presenter: [KARL WIEGAND, PE,](#)
Victaulic

Karl works in the fire protection application engineering group at Victaulic where his primary duties consist of providing training, providing technical support, researching and development, and representing Victaulic's interests within the fire protection industry. Karl holds a Professional Engineering license in the field of

Fire Protection Engineering and is a graduate of Worcester Polytechnic Institute with a Bachelor of Science degree in Mechanical Engineering and a Master of Science degree in Fire Protection Engineering. Over the last thirteen years Karl has held positions on NFPA 15, NFPA 16 NFPA 24, and NFPA 750 as well as AWWA's Backflow, Water Metering, and Fire Protection committees and Underwriters Laboratory's UL199 STP. Karl continues to represent the sprinkler industry on NFPA 13, 101, 420, 820, and 5000 and Underwriters Laboratory's UL262 STP and the NFSA's Engineering and Standards Committee.

IN THE KNOW

EMC 45TH ANNIVERSARY HISTORY BOOK IS STILL AVAILABLE!

Cost for printed book - \$50, check or credit card accepted

Pick up @ SES or during a chapter meeting

FREE digital download on the ASPE EMC website.

TABLE TOP SPONSORSHIP PRICING

ASPE Members

- \$200.00 for the 1st table per meeting/per vendor
- \$150.00 for each additional table per meeting/per vendor

Non-Members

- \$250.00 for the 1st table per meeting/per vendor
- \$200.00 for each additional table meeting/per vendor

If a vendor purchases table tops for 3 meetings during the year, a 4th meeting table top will be provided for free.



Commercial Washrooms. Brought to Life.
HANDWASHING & DRYING | ACCESSORIES | PARTITIONS | LOCKERS

CUTTING-EDGE HANDWASHING TAKES SHAPE

The next generation WashBar raises your restroom to new heights by providing touch-free soap, water and drying in an edgy new design for an unforgettable handwashing experience. The single connection point to the sink provides an impressive design element and creates more open space for cleaning.

ADVANTAGES OF THE WASHBAR

- Floating design for a simple and clean aesthetic
- Single connection point to the sink for easier cleaning
- Eliminates the cost and mess of paper towels
- Icons and LED lights to visually orient users
- Smart sensor technology eliminates false activations
- WashBar and bowl work together to keep water in the basin
- Gallon soap capacity to reduce the number of replacements
- Captures soap and water activations for maintenance planning

The new WashBar WB2 is available with the Verge® LVQ basin in Evero® natural quartz, OmniDeck® 5010 in Terreon® solid surface, or pair with a Terreon solid surface or Evero natural quartz undermount basin with the deck or countertop of your choice.



AVAILABLE IN SIX BEAUTIFUL FINISHES



WEST MICHIGAN		WEST MICHIGAN		EAST MICHIGAN		EAST MICHIGAN	
Michael Zago	Rod Cox	Todd Hiler	Ross Beck				
D (248) 960-1147 x 107	D (248) 960-1147 x 116	D (248) 960-1147 x 106	D (248) 960-1147 x 115				
C (616) 293-2121	C (616) 706-1481	C (616) 633-2609	C (734) 673-2119				
E mikez@newcenturysales.com	E rodc@newcenturysales.com	E toddh@newcenturysales.com	E rossb@newcenturysales.com				

www.newcenturysales.com

ALL-IN-ONE WASHBAR



All the fundamentals of handwashing have been thoughtfully designed into Bradley's Innovative WashBar.

WASHBAR FEATURES

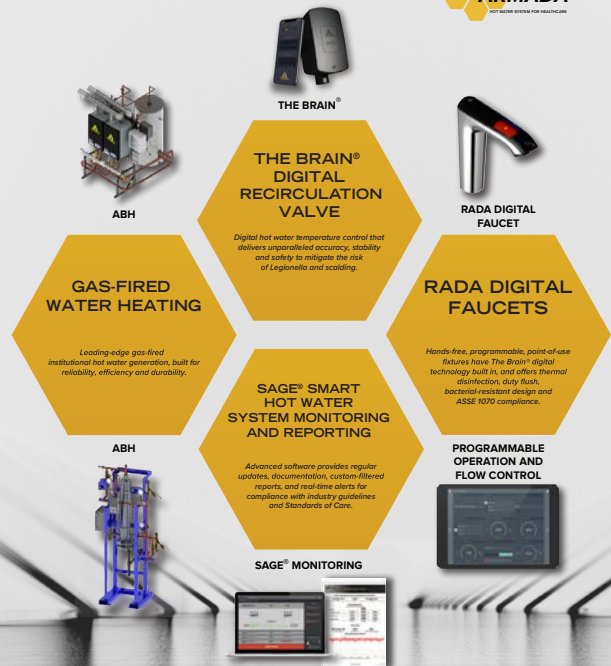
- CLEAN**
 - Touch-free activation
 - Low level LED Indicator
 - Gallon (3.8 L) soap capacity
 - Simply replace soap tank – no cleaning or refilling
 - Liquid and foam soap
- RINSE**
 - Touch-free activation
 - 0.5 GPM (1.9 LPM)
 - Ultra-high efficient 0.35 GPM (1.4 LPM) option where water conservation is a necessity
- DRY**
 - Touch-free activation
 - Heated air stream dries hands quickly and efficiently
 - Adjustable speed for quieter hand drying



bradleycorp.com
800 BRADLEY • (1 262 251 6000
W142 N9101 Fountain Boulevard
Menomonee Falls, WI USA 53051

bradleycorp.com/washbar

A TOTAL, STATE-OF-THE-ART HOT WATER SYSTEM, ENGINEERED TO DELIVER A SUPERIOR LEVEL OF USER SAFETY, INFECTION CONTROL AND COMPLIANCE, FROM MECHANICAL ROOM TO THE POINT OF USE.



Chip.bidigare@merloenergy.com
(586) 256 - 9822



Because it is the holiday season you might think this is a photo of one of Santa's little helpers. But it's not, it is a photo of our own Josh Pedraja the "Where is Waldo" member of the Eastern Michigan Chapter of ASPE. If you have not meet him at one the chapter meeting or the 2021



Convention in Indianapolis, be on the lookout as I am sure it won't be long before he is spotted at a meeting or event in your area. Josh has recently been visiting and attending many chapter meetings across the country. To date he has attended meetings in Cleveland, Central Ohio, Chicago and South Florida and he has plans to attend meetings in Omaha, Wisconsin, and Kansas City in the near future.

You can follow Josh's travels on the chapters LinkedIn page. Josh is not only a member of the Eastern Michigan Chapter, but he is also a secondary member of the Cleveland, Central Ohio, and Chicago chapters of ASPE. He does a fantastic job serving on the Eastern Michigan Chapter board as the V.P. Membership. He is also the Chairperson for our recently formed Eastern Michigan Chapter Golf Committee and plans to hold our first Golf outing in June of 2023. When you see Josh, make sure to say hello.

Josh, I want to thank you for all the work you do for our chapter. *Bill*

Available Now! SFPE Guide to Fire Risk Assessment, 2nd edition

The latest SFPE guide provides guidance to qualified practitioners in developing, selecting, and using fire risk assessment methodologies for the design, construction, and operation of buildings, facilities, or processes. Print and digital versions available.

[ORDER YOUR COPY](#)

Source: Society of Fire Protection Engineers



**ASPE EMC in partnership with
the Engineering Society of Detroit
present their**

HOLIDAY TOY DRIVE

**We will be collecting new, unwrapped toys for kids of all
ages at our December meeting on 12/13/2022 at the
Plumbing Industry Training Center in Troy, MI.**

**Toys can also be dropped off or sent to the SES Office:
4000 W. 11 Mile Road, Berkley.**

Monetary donations are also welcomed.

THANK YOU!

VP Technical Report

Pam Hartsell, CPD, PMP



Happy Holiday Season Eastern Michigan!

Though I wasn't personally able to attend the November chapter meeting, the feedback we received was great! We continued our Venting Design series with a lesson on Common Venting and were treated to another expert design class from

EMC President Bill Grayzar on Natural Gas Design. If you missed the meeting, you can still view Bill's presentation on our YouTube Channel with the following link: <https://youtu.be/5wBT2S8XABg>

We're looking forward to Session #3 – Horizontal Wet Vent and Vertical Wet Vent in December. If you're able to attend, please bring your copy of the 2018 MI Plumbing Code for reference. If you don't have one yet, code books will be available for purchase at the meeting.

Note that the venting classes are proprietary so unfortunately, they cannot be recorded.

Another reminder that we'll be offering anyone who attends all 7 venting classes a free book on venting design from the ASPE bookstore! This is a great opportunity to brush up on your venting skills or introduce a less experienced colleague to ASPE and plumbing design. Help us spread the knowledge by bringing a friend to a chapter meeting.

Here is the link to register: <https://www.eventbrite.com/e/aspe-emc-december-2022-technical-program-tickets-476657865507>

I really hope to see you on the 13th! Please reach out to me if I can do anything to help get you and your co-workers to a chapter meeting!

Your Chapter VP Tech,
Pam Hartsell
vpt.aspe.emc@gmail.com

ASPE Pipeline
News for the Plumbing System Design Industry

The only news site dedicated exclusively to ASPE, our members, and the plumbing engineering industry

Women
of
ASPE.

Engaging, retaining and advancing women in the industry.

Become involved, contact a board member or go to:

<https://www.aspe.org/membership-global-community/membership/special-interest-groups/women-of-aspe/>

VP Membership Report

Josh Pedraja



Greetings, Eastern Michigan!!

Merry Christmas and Happy Holidays! We have a new member, Vera Gjokaj from Balfrey & Johnston that we would like to welcome into our Chapter!! She is also a new member of WOA (Women of ASPE) and we're

excited to have her aboard with us!!

Did you know that the renewal process is easier than before? For those of you that need to renew, ASPE has made it a lot easier to renew online!! You can renew for 1 year, 2 years or even 3 years (and save \$\$\$). If you have forgotten your username or password, there are steps on the website to help recover that in order to log in and renew. Please use this address when renewing: <https://www.aspe.org/membership-global-community/join/>

As Golf Committee Chairman, I am excited to announce that we have a venue and date in place for our First Annual Eastern Michigan ASPE Golf Outing! Please save the date of Tuesday, June 13, 2023 for our outing at the Links of Novi!! More details will be coming out in terms of sponsorships, signups for Teams of 4, raffles, prizes and more!

If you're a new member, we'd LOVE to see you at our next Chapter Meeting!! As an attendee, you can earn CEU's, learn about Venting and other design topics and get to know more of your fellow engineers! Even if you're not a member, please reach out to us as we'd love to see you as our Guest. There are many wonderful benefits to ASPE!

DON'T FORGET about the Alfred Steele Scholarship!! ASPE also offers scholarships to qualifying students up to \$3,000?! Please check out the Alfred Steele scholarship at <https://www.aspe.org/membership-global-community/membership/alfred-steele-scholarship/> for more information and application. **The deadline for entry is January 31st.**

This scholarship is named in honor of Alfred Steele, PE, a long-time member of the American Society of Plumbing Engineers and a visionary and pioneer in advocating education and professional development for plumbing engineers and designers.

We highly recommend you apply for this scholarship as our very own Chapter Officer, Rachel Gendich (Treasurer) was a recipient of this scholarship, and she has benefited tremendously from it! As former college students ourselves, we know that every scholarship helps, and some are life changing!!

If you are a supplier or manufacturer's rep that is visiting engineering firms again, please reach out to us if you know of a firm that has engineers that are not signed up with ASPE, so we can reach out to them!!

Being a member of ASPE has many benefits including:

- ✓ ASPE Plumbing Engineering Design Handbook
- ✓ Bi-monthly subscription to Plumbing Systems & Design magazine
- ✓ ASPEReport (in Plumbing Engineer magazine)
- ✓ Members Only ASPENet Access (includes access to ASPE Data Books chapters)
- ✓ Publications and Education Programs Discounts
- ✓ ASPE Biennial Convention and Exposition (even years)
- ✓ ASPE Biennial Technical Symposia (odd years)
- ✓ Technical Seminars and Workshops
- ✓ Access to Earn Continuing Education Units (CEUs)
- ✓ Technical Books and Manuals (specific to the profession of plumbing engineering).
- ✓ Professional Certification / Recertification
- ✓ Continuing Education Opportunities in Plumbing Engineer magazine
- ✓ Alfred Steele Scholarship Program
- ✓ Local Chapter Affiliation
- ✓ Monthly Chapter Meetings and Technical Seminar Opportunities
- ✓ Networking Opportunities with Plumbing Engineers Worldwide
- ✓ Leadership Opportunities (Board of Directors, Region Chairs, Chapter Officers, Committees)

ASPE
YOUNG
PROFESSIONALS®

Engaging, retaining and advancing young professionals in the industry.

Become involved, contact a board member or go to:

<https://www.aspe.org/membership-global-community/membership/special-interest-groups/ayp/>



EASTERN MICHIGAN

SAVE THE DATE!



TUESDAY, JUNE 13, 2023



**THE LINKS OF NOVI
NOVI, MICHIGAN**



ETV *Platinum Plus*

ELECTRONIC TEMPERING VALVE



Designed for Critical Temperature DHW Application

- Maintains Set Point within +/- 2°F

Safeguard Against High Temperature Conditions

- Optional High Temp Limit Valve
- Alarm Output

Maintenance Free

- Stainless Steel Valve Body reduces Scale Buildup
- External Actuator Eliminates Gasket Maintenance



ETS AND ETS-LT

ELECTRONIC TEMPERING STATION

Pre-wired and Pre-Piped Assembly

- Contains ETV Platinum Plus
- Includes all Fittings, Isolation Valves

Wall Mounted and Floor Mounted

- Minimal Footprint
- Sizes from 3/4" to 4"



Conforms to the following:

ASSE 1017

California Lead Free Plumbing Law

CSA B 125.3 (NSF/ANSI 61 Section 8)



Major Lozuaway and Associates

Mike Ostrowski

1117 W. Grand Blanc Road

Grand Blanc, MI 48439

Phone: 810-287-6983

Email: moski@lozuaway.com

NOVEMBER MEETING

THANK YOU TO OUR ATTENDEES!

Jacob Baird
Alondre Barry
Adrienne Bennett
AK Bennett
Chip Bidigare
Theresa Card
Brian Chinery
Moh'd-Eslam Dahdolan
Larry D'Ascenzo
Robert Frey
Rachel Gendich
Rufina Golshteyn

Hayden Gosen
Andy Grajek
William Grayzar
Brienne Hall
Mohammed Hasanie
Dann Holmes
Thomas Huck
John Johnson
William Johnson
Rick Johnston
Trent Johnston
George Johnston, II

Mike Kennedy
Hank Koppelo
Michael Melaragni
Ossie Motton
Tyler Palchak
Joshua Pedraja
Brenda Pesmark
Michael Pietrzak
Gerry Potapa
Michael Taggart
Matt White

EDUCATION AND CREDENTIALING

CPD-Certified in Plumbing Design

CPDT-Certified Plumbing Design Technician

GPD-Green Plumbing Design



Click on the credential
to obtain more info.

NOVEMBER MEETING PHOTOS



Great turn-out!



Rob Murley and Mike Melaragni present on venting

NOVEMBER MEETING PHOTOS



**Fuel Gas Systems program presented by
ASPE EMC President, William Grayzar**

NOVEMBER MEETING PHOTOS



ASPE EMC VP Legislative, Ryan Lyle (L) presents ASPE EMC President and presenter Bill Grayzar (R) with a certificate of appreciation



Chapter Affiliate/Liaison, Chip Bidigare presents the prize to raffle ticket winner Moh'd-Eslam Dahdolan

COMMERCIAL POWER AND PERFORMANCE. BRADFORD WHITE QUALITY.



Your commercial customers need exceptional quality, performance, efficiency and reliability. Whether it's a hotel, restaurant, office building, school or industrial facility, Bradford White's proven commercial products deliver for your customers:

- **eF Series® Ultra High Efficiency Commercial Gas Water Heaters** offer up to 97% Thermal Efficiency. They feature BMS integration for remote monitoring for quicker, easier troubleshooting.
- **ElectriFLEX Series™ Commercial Electric Water Heaters** are field-convertible so a single model solves multiple installation requirements.
- **Brute® Series Condensing Hydronic Boilers & Volume Water Heaters** deliver modulation down to 20% of full fire (5:1 turndown) to serve a wide range of commercial water heating and space heating applications.

See our Full Commercial Line at
bradfordwhite.com/commercial

FOR THE PRO



Represented by: Burke Agency, Inc.

Replacing Your Water Heater Every Few Years is Not Our Business Plan



Conquest[®] condensing, gas-fired water heaters are constructed from AquaPLEX[®] duplex stainless steel so they're corrosion-resistant in potable water at any temperature. Available in 199-1000 MBH, Conquest provides even more BTUs in small spaces and fits through a standard 36-inch doorway. With a thermal efficiency of up to 96%, long product life and a 15-year tank and heat exchanger warranty, you can't afford not to have one.

Call R.L. Deppmann or visit our Monday Morning Minutes blog at deppmann.com for information on PVI Water Heaters
800.589.6120



800.784.8326 | pvi.com

TOPGOLF AUBURN HILLS: QuantumFlo Booster,
Beeco RPZ, & Beeco Automatic Control Valve



GM Flint Assembly Plant: Hubbell
Model EMV120-85-1.5SLA-A-XX Electric Tepad Water Heater



Velocity Boiler, Previously Crown Boiler

CRANE PUMPS & SYSTEMS

CRANE PUMPS & SYSTEMS



BOILERS & COMBINATION UNITS

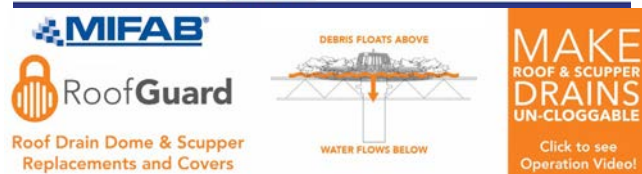
RIELLO

Energy For Life



QUALITY WATER & AIR: (248)589-8010

MIFAB PRODUCT LINE





EDUCATION



PUBLIC VENUES

COMMERCIAL OFFICES

T&S IS HERE >

T&S is proud to be a trusted name across a wide range of markets — staying at the forefront of today’s evolving industry and providing a vast selection of reliable solutions that meet required codes and compliances.

Learn more at tsbrass.com/markets.

Find us in



HEALTHCARE



T&S plumbing products represented in Eastern Michigan by: Diversified Spec Sales - 248-398-2400



New Century Sales, Inc.
Manufacturer’s Representatives



COPPERPRESS® SYSTEM BENEFITS

- Size range from 1/2” to 4”
- Green visual applicaton bands
- Consistent wall thickness on all products
- Leak before press systems
- Less equipment required
- Compatibility of fittings and tools

www.copperpress.com

Approvals & Certifications

- NFS ANSI/CAN 61
- UPC
- cUPC
- IPC
- IAPMO PS-117
- ICC-ES-PMG
- ASME B16.51



ISOTUBI USA

Stainless Steel Press Solutions

<https://isotubi-usa.com>

Represented by New Century Sales:

WEST MICHIGAN

Michael Zago
C (616) 293-2121

E mikez@newcenturysales.com

WEST MICHIGAN

Rod Cox
C (616) 706-1481

E rodcd@newcenturysales.com

EAST MICHIGAN

Todd Hiler
C (513) 633-2609

E todhd@newcenturysales.com

EAST MICHIGAN

Ross Beck
C (734) 673-2119

E rossb@newcenturysales.com

www.newcenturysales.com

MegaPress® G

Press safer.
**Press
bigger.**



Connected in quality.

Quick, safe connections on large diameter gas lines.

Viega MegaPress(R)G requires no open flames or added cost of fire watch, so projects are safer and more profitable. Installers can secure gas pipe up to 4" in 16 seconds or less, saving 60-90% on labor costs. That's why professionals choose MegaPressG - the trusted press connection method approved for gas lines ½" to 4".

Carl Petitt
Technical Manager
(614) 852-2691
carl.petitt@viega.us

Michael Norgan
District Sales Manager
(989) 415-2431
michael.norgan@viega.us

ALL-IN-ONE SCALD PROTECTION



420-T Series

Now there's no need to install a thermostatic mixing valve below the sink. The new 420-T Series combines Chicago Faucets durability with integrated scald protection. The result is a solid, easy-to-install restroom faucet that complies with ASSE 1070 requirements. With the 420-T, everything you need to meet current building codes and protect users against scalding is built right into the faucet.

Visit chicagofaucets.com or call your local representative for more information.

Taggart-Knight Group
248/553-4388
info@taggartknight.com





New Century Sales, Inc.
Manufacturer's Representatives

EAST MICHIGAN
1715 Traditional Dr.
Commerce Township, MI 48390
P (248) 960-1147 F (248) 960-1149

WEST MICHIGAN
550 36th St. SE
Grand Rapids, MI 49548
P (616) 600-9660

 AMTROL Expansion Tanks www.amtrol.com	 BASCO Shower Doors www.bascoshowerdoor.com	 Bradley Washroom Solutions www.bradleycorp.com	 CALEFFI Hydronic Solutions Hydronic Accessories www.caleffi.com/usa/en-us	 COPPER PRESS  ISOTUBI USA Plumbing Fittings www.copperpress.com www.isotubi-usa.com			
 FAIRMONT designs Bath Furniture www.fairmontdesigns.com	 General Wire Spring Company Sewer Cleaning Machines www.drainbrain.com	 genova PVC Products www.genovaproducts.com	 IBC Better Boilers www.ibcboiler.com	 Just manufacturing EST. 1993 Stainless Steel Sinks www.justmfg.com			
 MATCO NORCA Valves and Fittings www.matco-norca.com	MYERS Water and Waste Pumps www.femyers.com	 Oasis Fiberglass & Acrylic Tub & Showers www.oasisbath.com	 OASIS Oasis Water Coolers www.oasiscoolers.com				
 OATEY SCS Supply Chain Services  www.oatey.com	 Panasonic USA Bath Fans https://na.panasonic.com/us/home-living-solutions/ventilation-indoor-air-quality/	 PEXGUN AUTOMATIC PEX PIPE THE TOOL Pipe Installation Tools https://pexgun.com/					
 REHAU Unlimited Polymer Solutions PEX Plumbing Products www.rehau.com/us-en	 Rheem RUUD Water Heaters www.rheem.com www.ruud.com	 STRASSER woodenworks Bathroom Vanities & Cabinets www.strasserwood.com	 TURBOTORCH BRAZING & SOLDERING https://www.esabna.com/us/en/products/gas-equipment/brazing-and-soldering/index.cfm				
 StanleyBlack&Decker  DEWALT www.dewalt.com  IRWIN TOOLS www.irwin.com  LENOX www.lenoxtools.com				 LIXIL Link to Good Living  American Standard www.americanstandard-us.com  DXV www.dxv.com  FIAT PRODUCTS www.fiatproducts.com  GROHE www.grohe.us/en_us			

www.newcenturysales.com

ASPE Mentoring Program

The Women of ASPE are excited to introduce ASPE's new Mentoring Program!

This program, which is available to all members of the Society, has been designed to connect ASPE members who have a particular skill set (mentor) with individuals (mentee) who are searching to acquire the same skills to develop and make progress toward their personal and professional goals.

Who Is a Mentor?

A mentor is someone who can help the mentee develop skills for success and long-range career planning, is able to be a good listener, is willing to share experiences and views, is willing to commit time and effort, provides an "open door" to questions and problems, points out both strengths and opportunities for improvement, and has a vested interest in the growth and development of their mentee.

Benefits to the mentor:

- Satisfaction in helping someone mature, progress, and achieve goals
- Meeting and sharing experiences with other mentors
- Personal ongoing support to help the mentee succeed
- Personal fulfillment through contribution to the Society and the individual

Who Is a Mentee?

Having a mentor can contribute to a successful and satisfying career. Without a mentor, that learning occurs mostly through trial and error. With a mentor, even experienced professionals can benefit from the experiences and expertise of someone who has withstood the trial and can help the mentee avoid the mistakes. Similarly, those new to the industry will discover that being a mentee shortens the learning curve for acquiring the skills and knowledge most critical to a fruitful career.

Benefits to the mentee:

- Discover new talents about yourself
- Career satisfaction
- Expand your personal network
- Maximize your strengths

For more information click below:

<https://connect.aspe.org/aspe-mentor-match/mentoring>



BRANDS WE REPRESENT



BRANDS WE DISTRIBUTE



Natural Gas / Propane / Electric
85,000 to 10,000,000 BTU's
- ALSO -
Holby Thermostatic Mixing Valves



KERR PUMP AND SUPPLY
www.kerrpump.com

Jamie Caporosso: jamie@kerrpump.com
12880 Cloverdale, Oak Park, MI 48237
Ph.: (248) 543-3880 Fax: (248) 543-3236

Liquid Pumps
Vacuum Pumps
Heat Exchangers
Blowers
Related Equipment
and Accessories

Sales • Service • Repair



AURORA FIRE PUMPS

Compact Fire Pump Systems

- UL Listed/FM Approved Aurora Fire Pump
- UL Listed/ FM Approved Fire Pump Controller
- Capacities of 50-750 Gpm.
- Pressures of 40-160 Psi.
- Aurora Model PVM (close coupled to an ODP motor.)

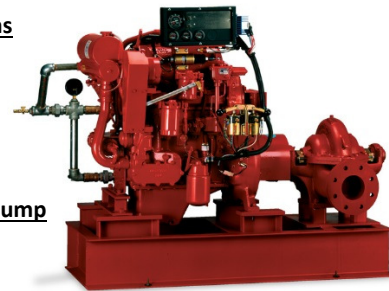
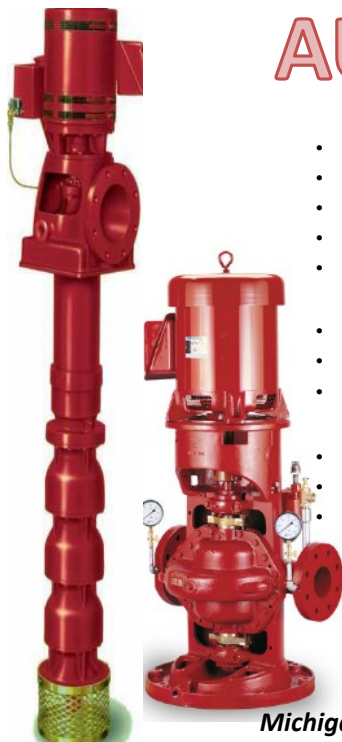
Vertical Split Case Electric Drive Fire Pump

- Electric Driven
- For Commercial, Industrial and Marine use only.
- UL Listed/ FM Approved/NFPA-20 Design

Horizontal Split Case Diesel Drive Fire Pump

- Diesel and Electric driven available.
- Flows at 250 gpm to 5000 gpm.
- Pressures available up to 490 Psi.

PLEASE INQUIRE TO KERR PUMP FOR PRICING,
SELECTIONS, OR TESTING ON EXISTING.
ALSO, PLEASE SEE www.aurorapump.com



Michigan's Oldest Supplier of Pumps and Process Equipment - 1905

Code Study and Development Group of Southeastern Michigan

Item No.	Description	Price Each*	Order Date
3200S18MI	2018 MI Plumbing Code	\$ 89.50	
3300S18MI	2018 MI Mechanical Code (Not Yet Available)	\$ 89.50	PO Number
3200S18	2018 IPC without Commentary	\$ 86.00	(If required)
3210S18	2018 IPC with Commentary	\$ 112.00	
3300S18	2018 IMC without Commentary	\$ 86.00	
3310S18	2018 IMC with Commentary	\$ 112.00	
3600S18	2018 IFGC without Commentary	\$ 86.00	
3610S18	2018 IFGC with Commentary	\$ 112.00	
3000S18	2018 International Building Code	\$ 130.00	
3000S15MI	2015 MI Building Code	\$ 139.00	
3100S15MI	2015 MI Residential Code	\$ 126.00	
3550S15MI	2015 MI Rehab for Existing Bldgs	\$ 90.00	
3800S15MI	2015 MI Energy Code	\$ 48.00	
3600S15	2015 IFGC without Commentary	\$ 84.00	
3310S15	2015 IMC with Commentary	\$ 109.00	
		\$ -	

- **Payment MUST accompany order / verify your preferred delivery method**
- **Credit cards, cash or company check accepted.**
- Dann Holmes - buildingwaterhealth@outlook.com or (248) 921-0582
- If orders are to be mailed, call Dann and you will be advised of additional freight charges.
- **Make check payable to: Code Study & Development Group of SE Michigan**

Mailing Address: **Will be given upon placement of order**

Item No.	Description	Quantity	Unit Price	Item Total	Status
				\$ -	
				\$ -	
				\$ -	
				\$ -	
				\$ -	
				\$ -	
				\$ -	
				\$ -	
				\$ -	
				\$ -	
Total books subject to incoming ICC Frgt charges		0			

Client Information	
Company	
Address	
City	
State	
Zip-Code	

Order Details	
Sub-Total	\$ -
ICC Frgt	\$ -
USPS Frgt	\$ -
MI Sales Tax	\$ -
Invoice Total	\$ -

Contact Information	
Attention	
E-Mail	
Phone	

Received By: _____

Check No. _____ or Cash _____

Date Paid _____

Credit Card Approval No. _____

***Supersedes all pricing forms printed before October 19, 2021**

2021 Code Study Order Form

BALFREY & JOHNSTON, INC.

Manufacturers' Representatives
 13050 Northend
 Oak Park, MI 48237
 Ph 313 864-2800 Fax 313 864-7219
George D. Johnston: george@balfrey-johnston.com
 balfrey-johnston.com

J.W. SALES, INC.

Manufacturers' Representative
 1570 E. Highwood
 Pontiac, MI 48340
 O: 248.745.8590 F: 248.745.0889
Thomas Huck: thomash@jwsalesinc.net
 C: 248-602-1575
Michael Fedorinchik: mikef@jwsalesinc.net
 Jwsalesinc.net

BURKE AGENCY, INC.

Manufacturers' Representatives
 2605 E. Oakley Park Road, Suite A,
 Commerce Twp, MI 48390
 Ph 248 669-2800 Fax 248 669-3310
Brian Burke, Peter Lapham, John Taylor
 bburke@burkeagency.com
 burkeagency.com

KERR PUMP AND SUPPLY

Manufacturers' Representatives
 12880 Cloverdale
 Oak Park, MI 48237
 Ph 248 543-3880 Fax 248 543-3236
Tyler Palchak: tpalchak@kerrpump.com
 Direct: 248-826-9414
 kerrpump.com

DALE PRENTICE COMPANY

Manufacturers' Representatives &
 Application Engineering Solutions Provider
 26511 Harding Avenue
 Oak Park, MI 48237
 Ph 800 536-4700 Fax 248 339-5559
Michael Cullen: mcullen@prenticeco.com
 Mobile 248 302-5924
 prenticeco.com

LOCHINVAR

High Efficiency Water Heaters and Boilers
 45900 Port Street
 Plymouth, MI 48170
 Ph 734 454-4480 Fax 734 454-1790
Jason Loverich: jloverich@lochinvar.com
 lochinvar.com

DAVE WATSON ASSOCIATES, INC.

Manufacturers' Representatives
 1325 W. Beecher St.
 Adrian, MI 49221
 Ph 517 263-8988 Fax 517 263-2328
Rick Johnston: rjohnston@davewatson.biz
 davewatson.biz

MAJOR/LOZUAWAY & ASSOCIATES, INC.

Manufacturers' Representatives
 1117 W. Grand Blanc Rd.
 Grand Blanc, MI 48439
 Ph 810 234-1635 Fax 810 234-8389
Mike Ostrowski: moski@lozuaway.com
 Mobile 810 287-6983
Bill Campbell, PE: bill@lozuaway.com
 Mobile 810-287-0029

**DIVERSIFIED SPEC. SALES, INC./
HOWLEY AGENCY SALES CO.**

Manufacturers' Representative
 13261 Northend Ave.
 Oak Park, MI 48237-3265
Brendan Burdette: bburdette@dsshowley.com
 Ph 248 398-2400 Fax 248 547-4905
 diversifiedspec.com

NEW CENTURY SALES, INC.

Manufacturers' Representatives
 1715 Traditional Dr.
 Commerce Township, MI 48390
 Ph 248 960-1147
Ross Beck: rossb@newcenturysales.com
 Mobile 734 673-2119
Todd Hiler: toddh@newcenturysales.com
 Mobile 513 633-2609
 newcenturysales.com

HS/BUY VAN ASSOCIATES, INC.

Manufacturers' Representatives
 56 S. Squirrel
 Auburn Hills, MI 48326
Jarrett Armstrong
 Ph 888 472-8982 Fax 248 852-0298
 info@hsbuyvan.com
 hsbuyvan.com

PAULA. BAKER

ASSE Region #4 Director - Mid West
 ASSE International
 18927 Hickory Creek Drive, Suite 220
 Mokena, IL 60448
 Ph 313 399-3072 Fax 248 585-1437
Paul Baker: paul.baker@ualocal98jatc.org
 www.asse-plumbing.org

PERFORMANCE ENGINEERING GROUP

Engineered Water Products
32955 Industrial Rd.
Livonia, MI 48150

Alan Deal: adeal@performanceengineering.com
Ph 734 266-5300 Fax 734 266-5310
performanceengineering.com

R.L. DEPPMANN COMPANY

Manufacturers' Representatives
46575 Magellan Drive
Novi, MI 48377

Gerry Potapa Jr., CPD, Paul Prentice, LEED AP®
Mark Fine, LEED AP®, Chris Lieder
Ph 800 589-6120 Fax 248 354-3763
sales@deppmann.com
deppmann.com

PROGRESSIVE PLUMBING SUPPLY

Wholesale Distributor
31239 Mound Road
Warren, MI 48092

Ph 586 756-8662 Fax 586 756-9077
ppsupplyco.com

Locations: Warren, Detroit, Mt. Clemens, and Oxford

TAGGART-KNIGHT GROUP

Manufacturers' Representatives
37686 Enterprise Ct.
Farmington Hills, MI 48331

Gary O. Taggart
Ph 248 553-4388 Fax 248 553-4653
info@taggartco.com
taggartknight.com

QUALITY WATER & AIR, INC.

Manufacturers' Representative
1402 Souter
Troy, MI 48083

Georgann Kummer, WBE
Ph 248 589-8010 Fax 248 589-8016
qualitywaterair@cs.com
qualitywaterair.com

V. E. SALES COMPANY

V. E. Sales is your source for
the finest quality flow control solutions.
25200 Jefferson Ave.
St. Clair Shores, MI 48081

Thomas Van Egmond
Ph 586 774-7760 Fax 586 774-1490
vesalesinc.com

INCREASE
EXPAND
GROW
MULTIPLY

Place your ad here and expand your company!



2022-2023 ASPE EMC Board

President

William Grayzar, CPD
28150 Greenfield Rd.
Southfield, MI 48076
(248)569-1430 ext.333
bill@dsdonline.com
president.aspe.emc@gmail.com

VP Technical

Pam Hartsell, CPD, PMP
Strategic Energy Solutions
4000 W. Eleven Mile Rd.
Berkley, MI 48072
(248) 399-1900 x 222
Fax: 399-1901
vpt.aspe.emc@gmail.com

VP Legislative

Ryan Lyle
Director of Training PITC
1911 Ring Drive
Troy, MI 48083-4229
248-585-1435 ext. 122
Ryan.Lyle@ualocal98jtc.org

VP Membership

Josh Pedraja
Toledo, OH | Central USA
4610 Entrance Drive, Suite H
Charlotte, NC 28273
616-307-5968
josh.pedraja@pattonsmmedical.com

VP Education

Kristin Simoneaux, P.E., CPD,
LEED AP
2338 Coolidge Hwy. #100
Berkley, MI 48072
(248) 336-4700
kristin.simoneaux@stantec.com

Treasurer

Rachel Gendich
Strategic Energy Solutions
4000 W. Eleven Mile Rd.
Berkley, MI 48072
(248) 399-1900
Fax: 399-1901
treasurer.aspe.emc@gmail.com

Administrative Secretary

George Johnston II
13050 Northend Ave
Oak Park, MI 48237
(313) 864-2800 Fax: 864-7219
george2@balfrey-johnston.com

Corresponding Secretary/ VP Social Media

Josh Pedraja
Toledo, OH | Central USA
4610 Entrance Drive, Suite H
Charlotte, NC 28273
616-307-5968
josh.pedraja@pattonsmmedical.com

Chaper Affiliate/Liaison

Chip Bidigare
23350 15 Mile Rd.
Clinton Township, MI 48035
586-755-3110 x 5938
chip.bidigare@merloenergy.com

AYP Liaison

Rachel Gendich
Strategic Energy Solutions
4000 W. Eleven Mile Rd.
Berkley, MI 48072
(248) 399-1900
Fax: 399-1901

WOA Liaison

Theresa Card, P.E., CPD,
LEED AP BD+C
Strategic Energy Solutions
4000 West 11 Mile Rd
Berkley, MI 48072
(248) 399-1900 ext 223
allethe@gmail.com

Directors

Michael Melaragni, CPD
38958 Lapham Drive | Livonia,
MI 48154-1014
(734) 591-9339
mjmelaragni@yahoo.com

Theresa Card, P.E., CPD,
LEED AP BD+C
Strategic Energy Solutions
4000 West 11 Mile Rd
Berkley, MI 48072
(248) 399-1900 ext 223

Brianne Hall, P.E., CPD,
LEED AP BD+C, GGP
FTC&H
39500 Mac Kenzie Dr. Suite 100
Novi, MI 48377
(248) 324-4780
bhall@fishbeck.com

Dann Holmes
(248) 921-0582
r2al@aspe.org



SPONSOR ADVERTISING OPPORTUNITY INFORMATION

ASPE EMC News is published 9 times per year - September through May.

Yearly advertising for a Business Card ad, which also includes a full Line Card in our sponsors guide:
\$200.00 for members and \$250.00 for non-members.

Graphic Ads - Full Year (9 Issues): Quarter page - \$250.00 ○ Half page - \$350.00 ○ Full page - \$550.00

Checks should be made payable to ASPE EMC and mailed to: Rachel Gendich – Treasurer
c/o Strategic Energy Solution, 4000 W. Eleven Mile Rd., Berkley, MI 48072

Email all digital artwork to: Theresa Green, Newsletter Editor at: theresa.m.green@outlook.com

Circulation 260 - Distributed to: Engineers, Contractors, Inspectors, and other industry professionals in Michigan.

PAY FAST, PAY EASY
Secure Payments Accepted By

