

APRIL - MEETING AGENDA

DATE:

TUESDAY, APRIL 11, 2023

WHERE:

IN-PERSON ONLY

**Plumbing Industry Training Center
in Troy, MI**

5:00 PM - 5:50 PM

**Venting Session #6 - Combination Waste
and Vent Systems**

5:50 PM - 6:15 PM

Vendor Table Top Presentations

6:15 PM

Dinner Service

6:30 PM - 7:30 PM

**Pipe Joining Methods-
Live Demonstrations**

REGISTRATION REQUIRED

IN-PERSON: <https://www.eventbrite.com/e/aspe-emc-april-2023-technical-program-tickets-603888756527>

SEE INSIDE COVER FOR TABLE OF CONTENTS

William Grayzar, CPD, GPD, FASPE President of ASPE EMC



Members of EMC-ASPE, please join me in welcoming our newest chapter members **Leah Bosma**, **Kelly Sugg P.E.** and **Jacob Baird**. Leah, Kelly and Jacob **Welcome!** Chapter members, if you see Leah, Kelly or Jacob at one of our upcoming chapter meetings be sure to introduce yourself.

Thank you to everyone who took part in the 2023 NASPE Race and helped us to promote “World Plumbing Day”. This year’s event was incredibly competitive with only 0.3952 seconds separating the field of participants from fastest to slowest race time. Adrienne Bennet took 1st place with a time of 3.3517 seconds. Congratulations to Adrienne Bennet, Josh Pedraja and Rachel Gendich the top three winners of this year’s NASPE Race. When it comes to water usage, the top three major uses of water globally are Agriculture, Industrial and Domestic. Agriculture being the largest, accounting for approximately 70% of the total global usage. However, in developed countries Industrial ranks as the largest usage. Agriculture also takes first as top source of water contamination in rivers and streams, comes is second in the contamination of wetlands and ranks third in the contamination of lakes.

EMC-ASPE Chapter Elections coming soon, now is the time to throw your hat in the ring if you are interested in serving on the Eastern Michigan Chapter Board of Directors. As a chapter members you are qualified to serve on the chapter board. An electronic election will be held between the April and May Chapter meetings and the newly elected Chapter Board will be recognized and installed at the May meeting, with installments becoming effective June 30th, 2023.

It's time to get your team together and/or sponsorships for **EMC-ASPE** first ever **Golf Outing** being held June 13, 2023 at the Links of Novi (refer to the flyer within this newsletter for more information).

FYI as of March 13, 2023 **MCA** (Mechanical/Construction Association) of **Detroit** will have moved from their 8 Mile Road location to their **new location at 36200 Schoolcraft Road, Livonia Michigan 48150**.

I look forward to seeing you at the Plumbing Industry Training Center (PITC) on April 11, 2023 for our 6th in the series of venting design classes covering “Combination Waste and Vent Systems”.

Continued on page 2

NOTICES

Contents

President's Report	1
Program	3
In The Know	4
VP Technical Report	5
VP Membership Report	6
ASPE EMC Golfing Event	7
WOA	8
March Mtg. Sponsors & Attendance . . .	10
March Meeting Photos	11 - 16
WOA Webinar Photos	16 - 18
Mentoring Program	25
Code Study & Development Books . . .	27
Line Card Sponsors	28 - 29

APRIL BOARD MEETING

Virtual Online Meeting
 Tuesday, 4/4/23 @ 4:30 PM

APRIL PROGRAM

Plumbing Industry Training Center,
 1911 Ring Drive, Troy, MI 48083
 Tuesday, 4/11/23, 5:00 - 7:30 PM

JUNE - ASPE EMC GOLF OUTING

Tuesday, 6/13/23.
 Where: The Links of Novi
 See pg. 7 for more info.

President's Report (cont. from page 1)

Bill Grayzar, CPD, GPD

Our technical session covering various “Pipe Joining Methods” and will include “Live Demonstrations” along with the tools required and how visually inspect for installation errors.

Bill



SAVE THE DATES!

2023 TECH SYMPOSIUM Bellevue, WA

9/28/23 - 10/1/23

2024 CONVENTION & EXPO

Columbus, OH

10/18/24-10/23/24

**LATEST NEW MEMBER
 ~ WELCOME ~**

**LEAH BOSMA
 KELLY SUGG
 JACOB BAIRD**

APRIL DESIGN SESSION

5:00-5:50 PM

TOPIC: VENTING SESSION #6 - Combination Waste and Vent Systems



Michael Melaragni

Presenter: **MICHAEL MELARAGNI, CPD**
*former Director, Plumbing Industry
Training Center*

Michael Melaragni has numerous years of experience in the industry. He is a certified instructor of journey workers and apprentices and a certified training coordinator with the United Association of Plumbers and Pipefitters, a licensed Master Plumber with the State of Michigan and is the former Director of Training for Plumbers Local 98 Apprenticeship program.



Rob Murley

Presenter: **ROB MURLEY**
*Instructor, Plumbing Industry Training
Center*

Rob Murley is a licensed journeyman plumber and member of UA Local 98 in Detroit Michigan. Rob has been a full time instructor since May of 2021 and fulfilled his apprenticeship with Local 98 between 2004-2009. Rob's experience stretches from light commercial work to heavy industrial work. Working on schools, restaurant/retail stores, apartments/lofts, hospitals, auto plants, blast furnaces, and several projects at the U.S. steel main plant throughout his career. Murley has also worked as foreman on various jobs, including running crews on larger jobs to running entire jobs. Some of the classes he instructs are: Trade Related Math; Pipes; Fittings; Valves and Fasteners; Use and care of tools; Drainage; Michigan State Plumbing Test Prep; Tube Bending; Natural Gas Piping and Venting; and UA Star Exam Preparation. Currently Murley is transitioning to add in the Science and Water Supply classes. Certifications include Medical Gas Installation and Backflow Testing. Murley is currently working towards becoming a certified instructor for these classes.

New This Year:

Venting Classes - attend all 7 to earn a venting design manual.

About Registration and CEUs:

You will need to register using an Eventbrite link that will be in the email. This allows us to know how many people we can expect. We require sign in/sign out sheets and your CEUs will be submitted to national within 1 week of our event. It may take up to another 2 weeks for the CEUs to show in your ASPE Education log. The PITC does have guest protocols we will have to obey in order to meet there, so please follow all posted signage and procedures.

APRIL TECHNICAL SESSION

6:30-7:30 PM

TOPIC: Pipe Joining Methods-Live Demonstrations

Join us for live demonstrations of some of the most common pipe joining methods. We'll be taking our presentations into the training shop to learn first-hand what it takes to properly join a variety of pipe materials, and the tools required for all the different methods and applications. If you're curious to know what goes on in the field and how to visually inspect for installation errors, this session is for you!

PRESENTERS:



George Johnston II
Balfrey & Johnston



Pete Lapham
Burke Agency



Andrew Legut
Victaulic



Michael Norgan
Viega



Cindy Zatto
VE Sales

IN THE KNOW

NEW INFORMATION FROM THE NATIONAL ASPE ASSOCIATION

REGISTRATION IS OPEN FOR ASPE'S JUNE 2023 MEDGAS WORKSHOP IN ATLANTA

ASPE's MedGas workshop fulfills the training requirements for the new ASSE 6060: Medical Gas Systems Designer professional certification. Attendees will enjoy all of the benefits of our 32-hour in-person workshop, which include: [FULL ARTICLE](#)

ASPE PUBLISHES MUCH-ANTICIPATED DESIGN GUIDE ON METHODOLOGIES TO REDUCE THE RISK OF LEGIONELLA

We are pleased to announce that Engineering Methodologies to Reduce the Risk of Legionella in Premise Plumbing Systems is now available.

"With increasing Legionnaires' disease outbreaks, many organizations have written guidelines and standards to mitigate its occurrence. However, this is the first comprehensive guide that [FULL ARTICLE](#)

(Sourced from the ASPE National site)



Commercial Washrooms. Brought to Life.
HANDWASHING & DRYING | ACCESSORIES | PARTITIONS | LOCKERS

CUTTING-EDGE HANDWASHING TAKES SHAPE

The next generation WashBar raises your restroom to new heights by providing touch-free soap, water and drying in an edgy new design for an unforgettable handwashing experience. The single connection point to the sink provides an impressive design element and creates more open space for cleaning.

ADVANTAGES OF THE WASHBAR

- Floating design for a simple and clean aesthetic
- Single connection point to the sink for easier cleaning
- Eliminates the cost and mess of paper towels
- Icons and LED lights to visually orient users
- Smart sensor technology eliminates false activations
- WashBar and bowl work together to keep water in the basin
- Gallon soap capacity to reduce the number of replacements
- Captures soap and water activations for maintenance planning

The new WashBar WB2 is available with the Verge® LVQ basin in Evero® natural quartz, OmniDeck® 5010 in Terreon® solid surface, or pair with a Terreon solid surface or Evero natural quartz undermount basin with the deck or countertop of your choice.





AVAILABLE IN SIX BEAUTIFUL FINISHES








Brushed Black Stainless Brushed Bronze Brushed Brass Brushed Nickel Brushed Stainless Polished Chrome

ALL-IN-ONE WASHBAR



All the fundamentals of handwashing have been thoughtfully designed into Bradley's innovative WashBar.

WASHBAR FEATURES



CLEAN

- Touch-free activation
- Low level LED Indicator
- Gallon (3.8 L) soap capacity
- Simply replace soap tank – no cleaning or refilling
- Liquid and foam soap



RINSE

- Touch-free activation
- 0.5 GPM (1.9 LPM)
- Ultra-high efficient 0.35 GPM (1.4 LPM) option where water conservation is a necessity



DRY

- Touch-free activation
- Heated air stream dries hands quickly and efficiently
- Adjustable speed for quieter hand drying

bradleycorp.com
800 BRADLEY • 1 262 251 6000
W142 N9101 Fountain Boulevard
Menomonee Falls, WI USA 53051

bradleycorp.com/washbar

Represented by New Century Sales:

<p>WEST MICHIGAN Michael Zago D (248) 960-1147 x 107 C (616) 293-2121 E mikez@newcenturysales.com</p>	<p>WEST MICHIGAN Rod Cox D (248) 960-1147 x 116 C (616) 706-1481 E rodc@newcenturysales.com</p>	<p>EAST MICHIGAN Todd Hiller D (248) 960-1147 x 106 C (513) 633-2609 E toddh@newcenturysales.com</p>	<p>EAST MICHIGAN Ross Beck D (248) 960-1147 x 115 C (734) 673-2119 E rossb@newcenturysales.com</p>
--	--	---	---

www.newcenturysales.com

A TOTAL, STATE-OF-THE-ART HOT WATER SYSTEM, ENGINEERED TO DELIVER A SUPERIOR LEVEL OF USER SAFETY, INFECTION CONTROL AND COMPLIANCE, FROM MECHANICAL ROOM TO THE POINT OF USE.



ABH

GAS-FIRED WATER HEATING

Leading-edge gas-fired institutional hot water generation, built for reliability, efficiency and durability.



THE BRAIN®

THE BRAIN® DIGITAL RECIRCULATION VALVE

Digital hot water temperature control that delivers unparalleled accuracy, stability and safety to mitigate the risk of Legionella and scalding.



RADA DIGITAL FAUCET

RADA DIGITAL FAUCETS

Hands-free, programmable, point-of-use fixtures have The Brain® digital technology built in, and offers thermal disinfection, duty flush, bacterial-resistant design and ASSE 1070 compliance.



ABH

SAGE® SMART HOT WATER SYSTEM MONITORING AND REPORTING

Advanced software provides regular updates, documentation, custom-filtered reports, and real-time alerts for compliance with industry guidelines and Standards of Care.



SAGE® MONITORING

PROGRAMMABLE OPERATION AND FLOW CONTROL





MERLO ENERGY

Chip.bidigare@merloenergy.com
(586) 256 - 9822



Armstrong

VP Technical Report

Pam Hartsell, CPD, PMP



I woke up to the sound of birds chirping today and it made me smile 😊. That means warm weather is coming, but it also means our program year is nearly over. Just two more meetings and we'll be off for the summer, so don't miss out on the opportunity to up your plumbing game with a little ASPE!

Our March design class on Waste Stack and Island Fixture Venting was informative, as usual, and received great feedback from our audience. Our Technical Session was a panel discussion on water heaters and it was so well received that we're already planning a follow up session for next year! Special thanks to EMC WOA Representative and Past President Theresa Card for putting the program together. It was definitely one of our better programs in recent memory. Check out the photos for a complete list of all who participated. It was a fantastic group of professionals!

Here are a few key take-aways:

- IAPMO's Water Demand Calculator is a good tool for sizing water heaters based on actual building usage: <https://www.iapmo.org/water-demand-calculator/>
- When planning for clearances around water heaters, remember to provide space for removal and replacement of heat exchangers as well as clearance from combustibles.
- If you're dealing with hard water – 350 TDS or higher, consider treating it to protect the heat exchanger.

Next month we continue our venting series with Combination Waste and Vent Systems, and our technical session will be Pipe Joining Methods with several live demonstrations – once again featuring some of our very own EMC Chapter Members! This will be a unique opportunity to learn more about what goes on in the field during plumbing system installation.

Mark your calendars for March 14th and register for the meeting here:

<https://www.eventbrite.com/e/aspe-emc-april-2023-technical-program-tickets-603888756527>

As always, please reach out to me if you have any questions about our Chapter, our meetings or the ASPE Organization.

Your Chapter VP Tech,
Pam Hartsell
vpt.aspe.emc@gmail.com



ASPE Pipeline
News for the Plumbing System Design Industry



The only news site dedicated exclusively to ASPE, our members, and the plumbing engineering industry

VP Membership Report

Josh Pedraja



Happy Spring!! Warmer weather and longer days are always welcomed! Speaking of welcoming, we want to welcome 3 new members to our Chapter, Leah Bosma, Kelly Sugg and Jacob Baird! We are excited to have you join our ASPE Family and hope to see you all at our next Chapter Meeting!!

Update on the Golf Outing: Our flyer is published and Sponsorships are now open! Please see our flyer for more details, or visit our Google Form at this link

https://docs.google.com/forms/d/e/1FAIpQLSfx43c0bsQe6saSBXp4ytRFEIM9Wn3cb87-bgU1yKuX_XkVAQ/viewform

Early Bird Specials end April 2nd!!!

If you have any questions, you can contact the Golf Committee at: golf.aspe.emc@gmail.com

Update on "Where's Waldo:" If you haven't been following our LinkedIn page, I was able to present to the ASPE Kansas City Chapter and along my travels and was able to have a young engineer join the Chicago Chapter! Welcome to the ASPE Family, Taylor!

Connect with and Follow us on LinkedIn (ASPE Eastern Michigan Chapter). We have up to date announcements and different posts that are educational, entertaining and informative on current events happening in our Plumbing World!

If you're a new member (or existing member), we'd LOVE to see you at our next Chapter Meeting!! As an attendee, you can earn CEU's, learn about Venting and other design topics and get to know more of your fellow engineers! Even if you're not a member, please reach out to us as we'd love to see you as our Guest. There are many wonderful benefits to ASPE!

Membership renewal! If you are up to renew your membership, remember to do it today! We don't want to see you go!! There is a new option to be apart of multiple chapters! If you are interested, please keep The Central Ohio Chapter as your home chapter and signup for as many others as you wish for only \$80 per chapter. You can also take advantage of Multiple-Year Membership Renewal. Save on your ASPE membership dues if you join or renew for more than one year!
• 5% Discount for a two-year renewal. • 10% Discount for a three-year renewal.

Being a member of ASPE has many benefits including:

- ✓ ASPE Plumbing Engineering Design Handbook
- ✓ Bi-monthly subscription to Plumbing Systems & Design magazine
- ✓ ASPEReport (in Plumbing Engineer magazine)
- ✓ Members Only ASPENet Access (includes access to ASPE Data Books chapters)
- ✓ Publications and Education Programs Discounts
- ✓ ASPE Biennial Convention and Exposition (even years)
- ✓ ASPE Biennial Technical Symposia (odd years)
- ✓ Technical Seminars and Workshops
- ✓ Access to Earn Continuing Education Units (CEUs)
- ✓ Technical Books and Manuals (specific to the profession of plumbing engineering).
- ✓ Professional Certification / Recertification
- ✓ Continuing Education Opportunities in Plumbing Engineer magazine
- ✓ Alfred Steele Scholarship Program
- ✓ Local Chapter Affiliation
- ✓ Monthly Chapter Meetings and Technical Seminar Opportunities
- ✓ Networking Opportunities with Plumbing Engineers Worldwide
- ✓ Leadership Opportunities (Board of Directors, Region Chairs, Chapter Officers, Committees)

EDUCATION AND CREDENTIALING

CPD-Certified in Plumbing Design

CPDT-Certified Plumbing Design Technician

GPD-Green Plumbing Design

Click on the credential to obtain more info.





EASTERN MICHIGAN

FIRST ANNUAL GOLF OUTING

TUESDAY, JUNE 13, 2023



THE LINKS OF NOVI
NOVI, MICHIGAN

SPONSORSHIP PACKAGES

TEAM OF FOUR
\$600

\$700 after April 2

SINGLE GOLFER
\$175

\$200 after April 2

\$50
DINNER ONLY

Limit 1

\$3,000

2 Teams of 4
Breakfast Sponsor
Lunch Sponsor
Dinner Sponsor
Hole Sponsor

DIAMOND

Limit 3

\$1,500

Team of 4
Breakfast Sponsor
Lunch Sponsor
Dinner Sponsor
Hole Sponsor

GOLD

Limit 5

\$1,000

Team of 2
Breakfast Sponsor
Lunch Sponsor
Dinner Sponsor
Hole Sponsor

SILVER

Limit 2

\$500

BREAKFAST SPONSOR

Limit 3

\$300

LUNCH SPONSOR

Limit 5

\$500

DINNER SPONSOR

No Limit

\$150

HOLE SPONSOR

Limit 1

\$500

BLOODY MARY SPONSOR

Limit 2

\$300

ON-COURSE BEVERAGE SPONSOR

Limit 5

\$200

SOCIAL HOUR SPONSOR

Limit 2

\$100
LONGEST DRIVE SPONSOR

Limit 1

\$125
DRIVING RANGE SPONSOR

Limit 2

\$100
CLOSEST TO THE PIN SPONSOR

PRIZE DONATIONS

SPONSOR AND REGISTER TODAY

CLICK HERE to Sponsor & Register

[Contact Us](#)



The Links of Novi
50395 W 10 Mile Road
Novi, Michigan 48374



Women of ASPE®

Learn more about our group!

WOA is dedicated to **engaging, retaining,** and **advancing** women in the plumbing design industry through:

- > Mentoring programs
- > Membership outreach
- > Partnerships with industry-related associations
- > Educational and leadership offerings

And more!



Email rrodriguez@aspe.org and visit aspe.org





ETV *Platinum Plus*

ELECTRONIC TEMPERING VALVE



Designed for Critical Temperature DHW Application

- Maintains Set Point within +/- 2°F

Safeguard Against High Temperature Conditions

- Optional High Temp Limit Valve
- Alarm Output

Maintenance Free

- Stainless Steel Valve Body reduces Scale Buildup
- External Actuator Eliminates Gasket Maintenance



ETS AND ETS-LT

ELECTRONIC TEMPERING STATION

Pre-wired and Pre-Piped Assembly

- Contains ETV Platinum Plus
- Includes all Fittings, Isolation Valves

Wall Mounted and Floor Mounted

- Minimal Footprint
- Sizes from 3/4" to 4"



Conforms to the following:

ASSE 1017

California Lead Free Plumbing Law

CSA B 125.3 (NSF/ANSI 61 Section 8)



Major Lozuaway and Associates

Mike Ostrowski

1117 W. Grand Blanc Road

Grand Blanc, MI 48439

Phone: 810-287-6983

Email: moski@lozuaway.com

20 New Dutch Lane, Fairfield, NJ 07004

Phone: 973-575-4004

Fax: 973-575-4052

heat-timer.com

MARCH MEETING

THANK YOU TO OUR SPONSORS!

Balfrey & Johnston

Emerson Swan

Lochinvar

Performance Engineering

R.L. Deppmann

THANK YOU TO OUR ATTENDEES!

Adrienne Bennett

Chip Bidigare

Theresa Card

Brian Chinery

MohdEslam Dahdolan

Larry D'Ascenzo

Alan Deal

Rachel Gendich

Andy Grajek

William Grayzar

Pamela Hartsell

Dann Holmes

George Johnston II

Mike Kennedy

Hank Koppelo

Jeremy Martin

Michael Melaragni

Yuqi Pan

Josh Pedraja

Ken Peters

Pesmark Brenda

Gerry Potapa

Matt Stewart

Gary Taggart

Dwayne Tesch

Kyle Tevault

Bob Thomas

Nick Vander Plas

Brandon Watts

Cindy Zatto

MARCH MEETING PHOTOS



Awesome turn out for our venting class!



Meet The Panelists!

MARCH MEETING PHOTOS



Our Water Heater Panel Discussion was led by EMC Past President Theresa Card



Our Panelist received certificates of appreciation from EMC President Bill Grayzar

MARCH MEETING PHOTOS



Congrats to Larry D'Ascenzo for being our big raffle winner!



Thank You to Balfrey & Johnston for sponsoring our meeting!

MARCH MEETING PHOTOS



Thank You to Emerson Swan for sponsoring our meeting!



Thank You to Lochinvar for sponsoring our meeting!

MARCH MEETING PHOTOS



Thank You to Performance Engineering for sponsoring our meeting!



Thank You to R.L. Deppmann for sponsoring our meeting!

MARCH MEETING PHOTOS



Congrats to our NASPE Race winners! Adrienne Bennett (1st Place), Josh Pedraja (2nd Place) and Rachel Gendich (3rd Place)

WOA WEBINAR PHOTOS



WOA Webinar on Diversity, Equity and Inclusion held on March 10th

WOA WEBINAR PHOTOS

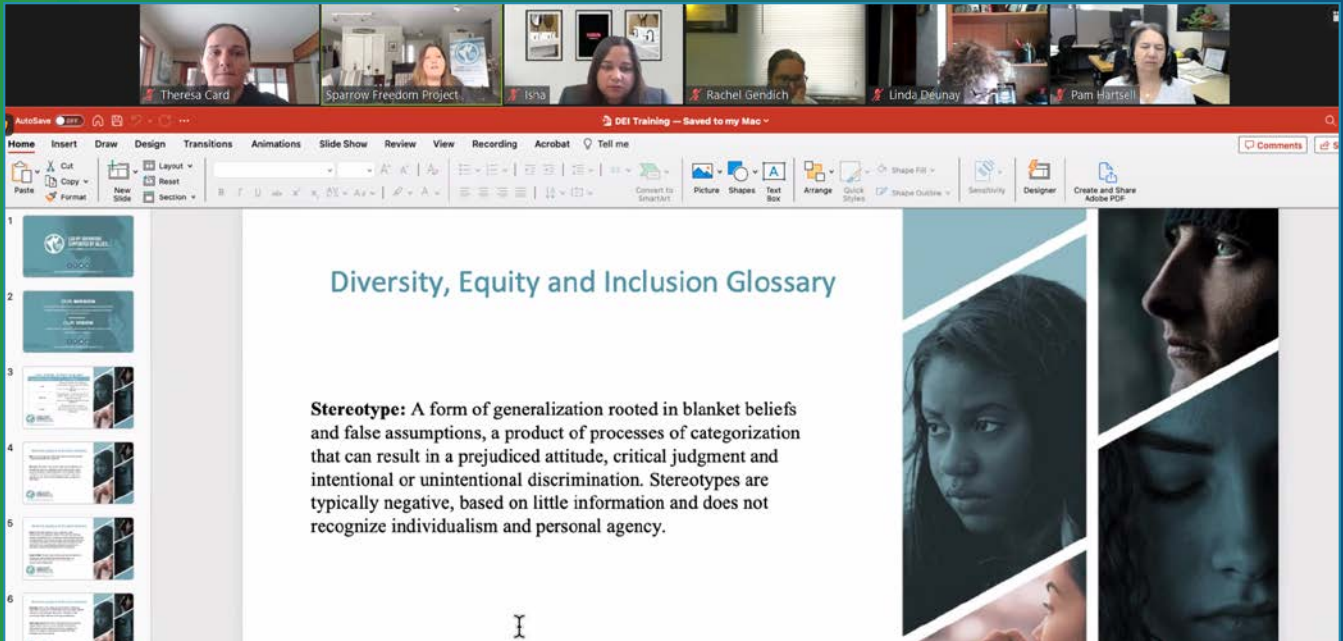


WOA Webinar

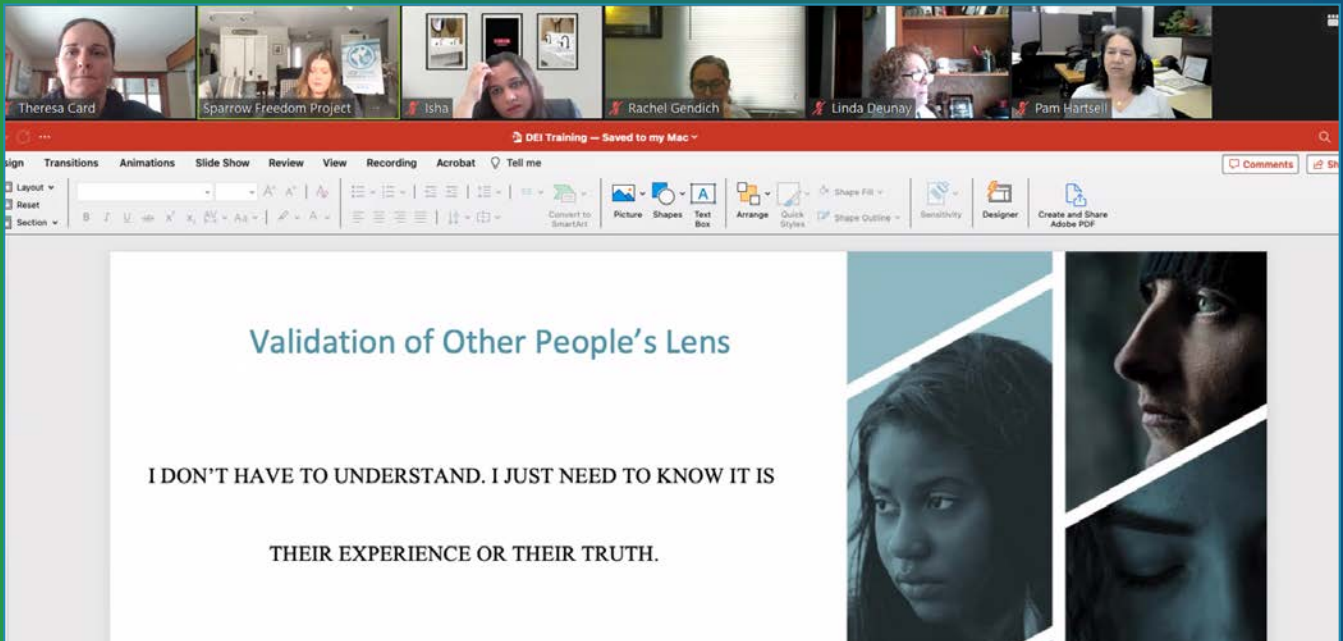


WOA Webinar

WOA WEBINAR PHOTOS



WOA Webinar



WOA Webinar

COMMERCIAL POWER AND PERFORMANCE. BRADFORD WHITE QUALITY.



Your commercial customers need exceptional quality, performance, efficiency and reliability. Whether it's a hotel, restaurant, office building, school or industrial facility, Bradford White's proven commercial products deliver for your customers:

- **eF Series® Ultra High Efficiency Commercial Gas Water Heaters** offer up to 97% Thermal Efficiency. They feature BMS integration for remote monitoring for quicker, easier troubleshooting.
- **ElectriFLEX Series™ Commercial Electric Water Heaters** are field-convertible so a single model solves multiple installation requirements.
- **Brute® Series Condensing Hydronic Boilers & Volume Water Heaters** deliver modulation down to 20% of full fire (5:1 turndown) to serve a wide range of commercial water heating and space heating applications.

See our Full Commercial Line at bradfordwhite.com/commercial

FOR THE PRO



Represented by: Burke Agency, Inc.

Replacing Your Water Heater Every Few Years is Not Our Business Plan



Conquest[®] condensing, gas-fired water heaters are constructed from AquaPLEX[®] duplex stainless steel so they're corrosion-resistant in potable water at any temperature. Available in 199-1000 MBH, Conquest provides even more BTUs in small spaces and fits through a standard 36-inch doorway. With a thermal efficiency of up to 96%, long product life and a 15-year tank and heat exchanger warranty, you can't afford not to have one.

Call R.L. Deppmann or visit our Monday Morning Minutes blog at deppmann.com for information on PVI Water Heaters
800.589.6120



800.784.8326 | pvi.com

TOPGOLF AUBURN HILLS: QuantumFlo Booster, Beeco RPZ, & Beeco Automatic Control Valve



GM Flint Assembly Plant: Hubbell Model EMV120-85-1.5SLA-A-XX Electric Tepid Water Heater



Velocity Boiler, Previously Crown Boiler

CRANE PUMPS & SYSTEMS

CRANE PUMPS & SYSTEMS



BOILERS & COMBINATION UNITS

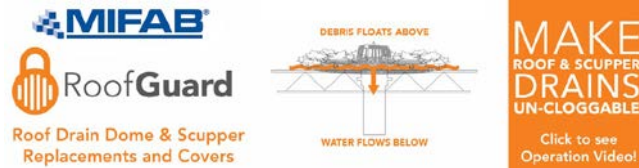
RIELLO

Energy For Life



QUALITY WATER & AIR: (248)589-8010

MIFAB PRODUCT LINE





EDUCATION



PUBLIC VENUES

COMMERCIAL OFFICES

T&S IS HERE >

T&S is proud to be a trusted name across a wide range of markets — staying at the forefront of today’s evolving industry and providing a vast selection of reliable solutions that meet required codes and compliances.

Learn more at tsbrass.com/markets.

Find us in



HEALTHCARE



T&S plumbing products represented in Eastern Michigan by: Diversified Spec Sales - 248-398-2400



New Century Sales, Inc.
Manufacturer's Representatives



COPPERPRESS® SYSTEM BENEFITS

- Size range from 1/2” to 4”
- Green visual application bands
- Consistent wall thickness on all products
- Leak before press systems
- Less equipment required
- Compatibility of fittings and tools

www.copperpress.com

Approvals & Certifications

- NFS ANSI/CAN 61
- UPC
- cUPC
- IPC
- IAPMO PS-117
- ICC-ES-PMG
- ASME B16.51



ISOTUBI USA

Stainless Steel Press Solutions

<https://isotubi-usa.com>

Represented by New Century Sales:

WEST MICHIGAN

Michael Zago
C (616) 293-2121

E mikez@newcenturysales.com

WEST MICHIGAN

Rod Cox
C (616) 706-1481

E rodcd@newcenturysales.com

EAST MICHIGAN

Todd Hiler
C (513) 633-2609

E todhd@newcenturysales.com

EAST MICHIGAN

Ross Beck
C (734) 673-2119

E rossb@newcenturysales.com

www.newcenturysales.com

MegaPress® G

Press safer.
Press bigger.



Connected in quality.

Quick, safe connections on large diameter gas lines.

Viega MegaPress(R)G requires no open flames or added cost of fire watch, so projects are safer and more profitable. Installers can secure gas pipe up to 4" in 16 seconds or less, saving 60-90% on labor costs. That's why professionals choose MegaPressG - the trusted press connection method approved for gas lines ½" to 4".

Carl Petitt
Technical Manager
(614) 852-2691
carl.petitt@viega.us

Michael Norgan
District Sales Manager
(989) 415-2431
michael.norgan@viega.us

ALL-IN-ONE SCALD PROTECTION



Certified.



420-T Series

Now there's no need to install a thermostatic mixing valve below the sink. The new 420-T Series combines Chicago Faucets durability with integrated scald protection. The result is a solid, easy-to-install restroom faucet that complies with ASSE 1070 requirements. With the 420-T, everything you need to meet current building codes and protect users against scalding is built right into the faucet.

Visit chicagofaucets.com or call your local representative for more information.

Taggart-Knight Group
248/553-4388
info@taggartknight.com





New Century Sales, Inc.
Manufacturer's Representatives

EAST MICHIGAN
1715 Traditional Dr.
Commerce Township, MI 48390
P (248) 960-1147 F (248) 960-1149

WEST MICHIGAN
550 36th St. SE
Grand Rapids, MI 49548
P (616) 600-9660

 AMTROL Expansion Tanks www.amtrol.com	 BASCO Shower Doors www.bascoshowerdoor.com	 Bradley Washroom Solutions www.bradleycorp.com	 CALEFFI Hydronic Solutions Hydronic Accessories www.caleffi.com/usa/en-us	 COPPER PRESS ISOTUBI USA STAINLESS STEEL SOLUTIONS Plumbing Fittings www.copperpress.com www.isotubi-usa.com											
 FAIRMONT designs Furniture Integration Bath Furniture www.fairmontdesigns.com	 FIAT PRODUCTS Specialty Products & Plumbing Fixtures www.fiatproducts.com	 General Wire Spring Company Sewer Cleaning Machines www.drainbrain.com	 genova PVC Products www.genovaproducts.com	 IBC Better Boilers www.ibcboiler.com											
 MATCO NORCA Valves and Fittings www.matco-norca.com	 MYERS Water and Waste Pumps www.femyers.com	 Oasis Fiberglass & Acrylic Tub & Showers www.oasisbath.com	 OSIS Oasis Water Coolers www.oasiscoolers.com												
 OATEY SCS Supply Chain Services      www.oatey.com	 Panasonic USA Bath Fans https://na.panasonic.com/us/home-living-solutions/ventilation-indoor-air-quality/	 PEXGUN AUTOMATIC PEX PIPE TIE TOOL Pipe Installation Tools https://pexgun.com/													
 REHAU Unlimited Polymer Solutions PEX Plumbing Products www.rehau.com/us-en	 Rheem RUUD Water Heaters www.rheem.com www.ruud.com	 STRASSER woodenworks Bathroom Vanities & Cabinets www.strasserwood.com	 TURBOTORCH BRAZING & SOLDERING https://www.esabna.com/us/en/products/gas-equipment/brazing-and-soldering/index.cfm												
 StanleyBlack&Decker		 LIXIL Link to Good Living <table border="0" data-bbox="829 1583 1403 1734"> <tr> <td data-bbox="245 1646 386 1688"></td> <td data-bbox="435 1640 558 1696"></td> <td data-bbox="607 1650 760 1682"></td> <td data-bbox="850 1650 1062 1682"></td> <td data-bbox="1117 1640 1192 1696"></td> <td data-bbox="1276 1640 1354 1696"></td> </tr> <tr> <td>www.dewalt.com</td> <td>www.irwin.com</td> <td>www.lenoxtools.com</td> <td>www.americanstandard-us.com</td> <td>www.dxv.com</td> <td>www.grohe.us/en_us</td> </tr> </table>								www.dewalt.com	www.irwin.com	www.lenoxtools.com	www.americanstandard-us.com	www.dxv.com	www.grohe.us/en_us
www.dewalt.com	www.irwin.com	www.lenoxtools.com	www.americanstandard-us.com	www.dxv.com	www.grohe.us/en_us										

www.newcenturysales.com

ASPE Mentoring Program

The Women of ASPE are excited to introduce ASPE's new Mentoring Program!

This program, which is available to all members of the Society, has been designed to connect ASPE members who have a particular skill set (mentor) with individuals (mentee) who are searching to acquire the same skills to develop and make progress toward their personal and professional goals.

Who Is a Mentor?

A mentor is someone who can help the mentee develop skills for success and long-range career planning, is able to be a good listener, is willing to share experiences and views, is willing to commit time and effort, provides an "open door" to questions and problems, points out both strengths and opportunities for improvement, and has a vested interest in the growth and development of their mentee.

Benefits to the mentor:

- Satisfaction in helping someone mature, progress, and achieve goals
- Meeting and sharing experiences with other mentors
- Personal ongoing support to help the mentee succeed
- Personal fulfillment through contribution to the Society and the individual

Who Is a Mentee?

Having a mentor can contribute to a successful and satisfying career. Without a mentor, that learning occurs mostly through trial and error. With a mentor, even experienced professionals can benefit from the experiences and expertise of someone who has withstood the trial and can help the mentee avoid the mistakes. Similarly, those new to the industry will discover that being a mentee shortens the learning curve for acquiring the skills and knowledge most critical to a fruitful career.

Benefits to the mentee:

- Discover new talents about yourself
- Career satisfaction
- Expand your personal network
- Maximize your strengths

For more information click below:

<https://connect.aspe.org/aspe-mentor-match/mentoring>





KERR PUMP AND SUPPLY

12880 Cloverdale, Oak Park, MI 48237

248-826-9414 tpalchak@kerrpump.com www.kerrpump.com

Liquid Pumps
Vacuum Pumps
Heat Exchangers
Blowers
Related Equipment
and Accessories

Sales • Service • Repair



PENTAIR FIRE PUMPS AURORA®

Compact Fire Pump Systems

- UL Listed/FM Approved NFPA-20
- UL Listed/FM Approved Controller NFPA-20
- Capacities of 50-750 Gpm.
- Pressures of 40-160 Psi.

Vertical Split Case Electric Drive Fire Pump

- Electric Driven
- For Commercial, Industrial and Marine use only.
- UL Listed/ FM Approved/NFPA-20 Design

Horizontal Split Case Diesel/Electric Drive Fire Pump

- Diesel and Electric driven available.
- Flows at 250 gpm to 5000 gpm.
- Pressures available up to 490 Psi.

Ask us about our Red-Hot Quick Shipping Program!

We test fire pumps
for annual and
acceptance
requirements.



www.aurorapump.com

Michigan's Oldest Supplier of Pumps and Process Equipment - 1905



Pattons medical

Medical Air Systems*

- Oil-Less Scroll
- Oil-Less Reciprocating
- Oil-Free Rotary Screw
- Oil-Flooded Reciprocating Control & Instrument Air Systems



Medical Vacuum Systems*

- Contactless Claw
- Lubricated Rotary Vane
- Dry Rotary Vane



Medical Pipeline Products*

- Manifolds
- Alarms
- Zone Valve Boxes
- Outlets
- Lab Pipeline Equipment
- Accessories



* Meets or exceeds NFPA 99-2021 Edition Health Care Facilities Code

www.pattonsmedical.com

PERFORMANCE
engineering group



32995 Industrial Road, Livonia, MI 48150

Phone 734.266.5300 Fax 734.266.5310

www.performanceengineering.com

BRANDS WE REPRESENT



BRANDS WE DISTRIBUTE



Natural Gas / Propane / Electric
85,000 to 10,000,000 BTU's
- ALSO -
Holby Thermostatic Mixing Valves

BALFREY & JOHNSTON, INC.

Manufacturers' Representatives
 13050 Northend
 Oak Park, MI 48237
 Ph 313 864-2800 Fax 313 864-7219
George D. Johnston: george@balfrey-johnston.com
 balfrey-johnston.com

J.W. SALES, INC.

Manufacturers' Representative
 1570 E. Highwood
 Pontiac, MI 48340
 O: 248.745.8590 F: 248.745.0889
Thomas Huck: thomash@jwsalesinc.net
 C: 248-602-1575
Michael Fedorinchik: mikef@jwsalesinc.net
 Jwsalesinc.net

BURKE AGENCY, INC.

Manufacturers' Representatives
 2605 E. Oakley Park Road, Suite A,
 Commerce Twp, MI 48390
 Ph 248 669-2800 Fax 248 669-3310
Brian Burke, Peter Lapham, John Taylor
 bburke@burkeagency.com
 burkeagency.com

KERR PUMP AND SUPPLY

Manufacturers' Representatives
 12880 Cloverdale
 Oak Park, MI 48237
 Ph 248 543-3880 Fax 248 543-3236
Tyler Palchak: tpalchak@kerrpump.com
 Direct: 248-826-9414
 kerrpump.com

DALE PRENTICE COMPANY

Manufacturers' Representatives &
 Application Engineering Solutions Provider
 26511 Harding Avenue
 Oak Park, MI 48237
 Ph 800 536-4700 Fax 248 339-5559
Michael Cullen: mcullen@prenticeco.com
 Mobile 248 302-5924
 prenticeco.com

LOCHINVAR

High Efficiency Water Heaters and Boilers
 45900 Port Street
 Plymouth, MI 48170
 Ph 734 454-4480 Fax 734 454-1790
Jason Loverich: jloverich@lochinvar.com
 lochinvar.com

DAVE WATSON ASSOCIATES, INC.

Manufacturers' Representatives
 1325 W. Beecher St.
 Adrian, MI 49221
 Ph 517 263-8988 Fax 517 263-2328
Rick Johnston: rjohnston@davewatson.biz
 davewatson.biz

MAJOR/LOZUAWAY & ASSOCIATES, INC.

Manufacturers' Representatives
 1117 W. Grand Blanc Rd.
 Grand Blanc, MI 48439
 Ph 810 234-1635 Fax 810 234-8389
Mike Ostrowski: moski@lozuaway.com
 Mobile 810 287-6983
Bill Campbell, PE: bill@lozuaway.com
 Mobile 810-287-0029

**DIVERSIFIED SPEC. SALES, INC./
HOWLEY AGENCY SALES CO.**

Manufacturers' Representative
 13261 Northend Ave.
 Oak Park, MI 48237-3265
Brendan Burdette: bburdette@dsshowley.com
 Ph 248 398-2400 Fax 248 547-4905
 diversifiedspec.com

NEW CENTURY SALES, INC.

Manufacturers' Representatives
 1715 Traditional Dr.
 Commerce Township, MI 48390
 Ph 248 960-1147
Ross Beck: rossb@newcenturysales.com
 Mobile 734 673-2119
Todd Hiler: toddh@newcenturysales.com
 Mobile 513 633-2609
 newcenturysales.com

HS/BUY VAN ASSOCIATES, INC.

Manufacturers' Representatives
 56 S. Squirrel
 Auburn Hills, MI 48326
Jarrett Armstrong
 Ph 888 472-8982 Fax 248 852-0298
 info@hsbuyvan.com
 hsbuyvan.com

PAULA. BAKER

ASSE Region #4 Director - Mid West
 ASSE International
 18927 Hickory Creek Drive, Suite 220
 Mokena, IL 60448
 Ph 313 399-3072 Fax 248 585-1437
Paul Baker: paul.baker@ualocal98jatc.org
 www.asse-plumbing.org

PERFORMANCE ENGINEERING GROUP

Engineered Water Products
32955 Industrial Rd.
Livonia, MI 48150

Alan Deal: adeal@performanceengineering.com
Ph 734 266-5300 Fax 734 266-5310
performanceengineering.com

R.L. DEPPMANN COMPANY

Manufacturers' Representatives
46575 Magellan Drive
Novi, MI 48377

Gerry Potapa Jr., CPD, Paul Prentice, LEED AP®
Mark Fine, LEED AP®, Chris Lieder
Ph 800 589-6120 Fax 248 354-3763
sales@deppmann.com
deppmann.com

PROGRESSIVE PLUMBING SUPPLY

Wholesale Distributor
31239 Mound Road
Warren, MI 48092

Ph 586 756-8662 Fax 586 756-9077
ppsupplyco.com

Locations: Warren, Detroit, Mt. Clemens, and Oxford

TAGGART-KNIGHT GROUP

Manufacturers' Representatives
37686 Enterprise Ct.
Farmington Hills, MI 48331

Gary O. Taggart
Ph 248 553-4388 Fax 248 553-4653
info@taggartco.com
taggartknight.com

QUALITY WATER & AIR, INC.

Manufacturers' Representative
1402 Souter
Troy, MI 48083

Georgann Kummer, WBE
Ph 248 589-8010 Fax 248 589-8016
qualitywaterair@cs.com
qualitywaterair.com

V. E. SALES COMPANY

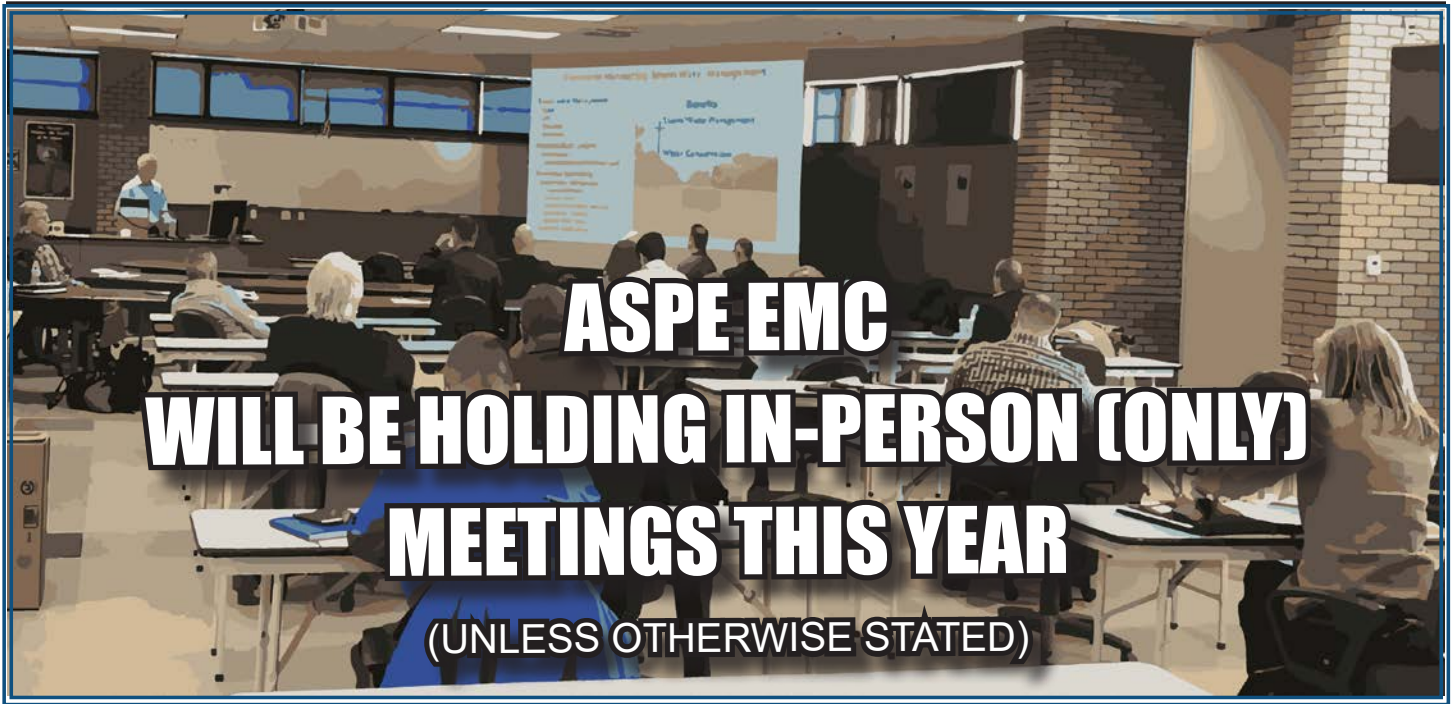
V. E. Sales is your source for
the finest quality flow control solutions.
25200 Jefferson Ave.
St. Clair Shores, MI 48081

Thomas Van Egmond
Ph 586 774-7760 Fax 586 774-1490
vesalesinc.com



INCREASE
EXPAND
GROW
MULTIPLY

Place your ad here and expand your company!



2022-2023 ASPE EMC Board

President

William Grayzar, CPD
28150 Greenfield Rd.
Southfield, MI 48076
(248)569-1430 ext.333
bill@dsonline.com
president.aspe.emc@gmail.com

VP Technical

Pam Hartsell, CPD, PMP
Strategic Energy Solutions
4000 W. Eleven Mile Rd.
Berkley, MI 48072
(248) 399-1900 x 222
Fax: 399-1901
vpt.aspe.emc@gmail.com

VP Legislative

Ryan Lyle
Director of Training PITC
1911 Ring Drive
Troy, MI 48083-4229
248-585-1435 ext. 122
Ryan.Lyle@ualocal98jtc.org

VP Membership

Josh Pedraja
Toledo, OH | Central USA
4610 Entrance Drive, Suite H
Charlotte, NC 28273
616-307-5968
josh.pedraja@pattonsmmedical.com

VP Education

Kristin Simoneaux, P.E., CPD,
LEED AP
2338 Coolidge Hwy. #100
Berkley, MI 48072
(248) 336-4700
kristin.simoneaux@stantec.com

Treasurer

Rachel Gendich
Strategic Energy Solutions
4000 W. Eleven Mile Rd.
Berkley, MI 48072
(248) 399-1900
Fax: 399-1901
treasurer.aspe.emc@gmail.com

Administrative Secretary

George Johnston II
13050 Northend Ave
Oak Park, MI 48237
(313) 864-2800 Fax: 864-7219
george2@balfrey-johnston.com

Corresponding Secretary/ VP Social Media

Josh Pedraja
Toledo, OH | Central USA
4610 Entrance Drive, Suite H
Charlotte, NC 28273
616-307-5968
josh.pedraja@pattonsmmedical.com

Chaper Affiliate/Liaison

Chip Bidigare
23350 15 Mile Rd.
Clinton Township, MI 48035
586-755-3110 x 5938
chip.bidigare@merloenergy.com

AYP Liaison

Rachel Gendich
Strategic Energy Solutions
4000 W. Eleven Mile Rd.
Berkley, MI 48072
(248) 399-1900
Fax: 399-1901

WOA Liaison

Theresa Card, P.E., CPD,
LEED AP BD+C
Strategic Energy Solutions
4000 West 11 Mile Rd
Berkley, MI 48072
(248) 399-1900 ext 223
allethe@gmail.com

Directors

Michael Melaragni, CPD
38958 Lapham Drive | Livonia,
MI 48154-1014
(734) 591-9339
mjmelaragni@yahoo.com

Theresa Card, P.E., CPD,
LEED AP BD+C
Strategic Energy Solutions
4000 West 11 Mile Rd
Berkley, MI 48072
(248) 399-1900 ext 223

Brianne Hall, P.E., CPD,
LEED AP BD+C, GGP
FTC&H
39500 Mac Kenzie Dr. Suite 100
Novi, MI 48377
(248) 324-4780
bhall@fishbeck.com

Dann Holmes
(248) 921-0582
r2al@aspe.org



SPONSOR ADVERTISING OPPORTUNITY INFORMATION

ASPE EMC News is published 9 times per year - September through May.

Yearly advertising for a Business Card ad, which also includes a full Line Card in our sponsors guide:
\$200.00 for members and \$250.00 for non-members.

Graphic Ads - Full Year (9 Issues): Quarter page - \$250.00 ○ Half page - \$350.00 ○ Full page - \$550.00

Checks should be made payable to ASPE EMC and mailed to: Rachel Gendich – Treasurer
c/o Strategic Energy Solution, 4000 W. Eleven Mile Rd., Berkley, MI 48072

Email all digital artwork to: Theresa Green, Newsletter Editor at: theresa.m.green@outlook.com

Circulation 260 - Distributed to: Engineers, Contractors, Inspectors, and other industry professionals in Michigan.

PAY FAST, PAY EASY
Secure Payments Accepted By

