

APRIL - MEETING AGENDA

DATE:

TUESDAY, APRIL 12, 2022

WHERE:

This will be a HYBRID Meeting

**Plumbing Industry Training Center
in Troy, MI**

5:00 PM - 6:00 PM

Right Sizing Hot Water Return - Part 1

6:00 PM - 6:30 PM

Dinner / Vendor Table Top Presentation

6:30 PM - 7:30 PM

Right Sizing Hot Water Return - Part 2

REGISTRATION REQUIRED

IN-PERSON: <https://www.eventbrite.com/e/aspe-emc-april-2022-technical-program-tickets-248180202667>

VIRTUAL: <https://education.aspe.org/products/eastern-michigan-chapter-meeting-right-sizing-hot-water-return-design-apr-2022>

SEE INSIDE COVER FOR TABLE OF CONTENTS

From Pam Hartsell, CPD, PMP President of ASPE EMC



Hello again Eastern Michigan!

March gave us several ways to celebrate the plumbing industry. Our Chapter Meeting had two highly informative presentations – a design class on storm water retention and re-use and a technical session covering the use and sizing of interceptors in plumbing systems. The evening ended with the excitement of our annual NASPE Race in honor of World Plumbing Day, March 11th. Placing in the

race this year were 1st - EMC VP Tech Theresa Card, 2nd - Chip Bidgaire of Merlo Energy and 3rd Bob Thomas of Diversified Spec Sales! Nice work on your custom cars and congrats on your big wins! A special thanks also goes out to Dawn Fischhaber of Kohler for donating products for our raffle. That was a nice surprise!

April promises more thought leading discussion on right sizing – this time for hot water return. We are fortunate to have Christoph Lohr, VP of Strategic Initiatives at IAPMO, as our guest speaker for both presentations. Christoph is a nationally known expert on Legionella mitigation. He is also a member of the ASPE Phoenix Chapter who grew up in Rochester, MI. We look forward to welcoming him back to the mitten!

It's chapter elections time again, so please be on the lookout for a survey monkey email to cast your ballot. If you're interested in running for a board position, we'd love to have you! Just drop me a note at the email address below.

A friendly reminder that our personal hygiene products drive is still underway. You can find a complete list of accepted items in the flyer here in the newsletter. Thank You to everyone who has donated!

The dates for the 2022 Convention have been announced and we want you there! Start planning now to join your fellow chapter and society members in Indy next September! More details are available at aspe.org.

If you're able to join us in person this month, we're excited to be having a Happy Hour event immediately afterwards, hosted by the George Bellman, our ASPE Young Professionals liaison, and sponsored by Balfrey & Johnston. It should be a lot of fun so we hope you can make it.

Looking forward to seeing you soon!

Your Chapter President,

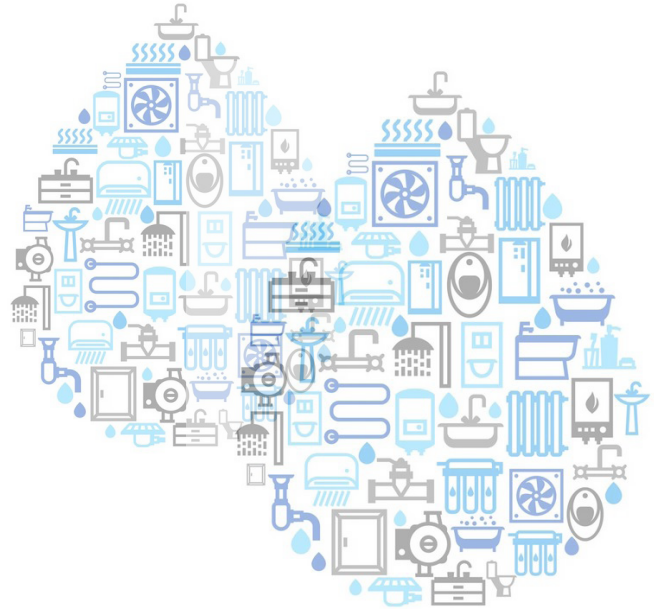
Pam Hartsell

president.aspe.ec@gmail.com

NOTICES

Contents

President's Report	1
2022 ASPE Convention & Expo	2
Program	3
In The Know	4
EMC 45th Anniv. History Book	5
VP Technical Report	6
WOA Donation Event	7
VP Membership Report	8
Job Posting	12 - 13
March Attendees	16
Photos	16 - 19
Mentorship	22
Code Study & Development Books	24
Line Card Sponsors	25 - 26



ASPE EASTERN MI CHAPTER WOA DONATION EVENT

This drive is taking place **2/1/22 - 5/30/22**
Please help us help others.
For more info click [HERE](#)

APRIL BOARD MEETING

Virtual Online Meeting
Tuesday, 4/5/2022 @ 4:30 PM

APRIL PROGRAM

HYBRID Meeting
Tuesday, 4/12/2022, 5:00 - 7:30 PM

ASPE IS ACCEPTING APPLICATIONS FOR THE ALFRED STEELE SCHOLARSHIP

Contact ASPE National for more information at
(847) 296-0002, or email info@aspe.org

[CLICK HERE FOR MORE INFORMATION](#)

ASPE Convention
& Expo **2022**
Indianapolis // September 16-21

**LATEST NEW MEMBER
~ WELCOME ~**

**JON SMART
MATT WHITE**

APRIL DESIGN SESSIONS

5:00-6:00PM & 6:30-7:30PM

TOPIC: Right Sizing Hot Water Return Design - Part 1 & 2

This presentation and workshop will cover considerations when selecting hot water temperature to include reviewing hot water system routing options, understanding the limitations of “Rules of Thumb” HWR Sizing Methodologies, learning about the “True” Heat Loss Sizing methodology, understanding Hardy-Cross Method and Parallel Piping Systems. We will also review balancing valve types and limitations and review criteria for selecting a recirculation pump.



Presenter: **Christoph Lohr**,
IAPMO, Vice President of
Strategic Initiatives

Christoph is IAPMO’s Vice President of Strategic Initiatives. As part of his duties he provides industry leadership through participation in strategic industry initiatives, and provide technical support to all IAPMO’s business units as needed. He has over a decade of

experience in designing plumbing systems for healthcare, laboratory, hospitality, sports, and university projects.

LOHR’S BIO CONTINUED:

He is a licensed professional engineer (PE) in six states, has his Certified-in-Plumbing-Design (CPD) certification from ASPE, is a LEED AP BD+C, and has his ASPE 12080 Legionella Mitigation Specialist designation. He has spoken at the ASPE 2018 Convention, Legionella 2018 and 2019 conferences, HITS Consortium, NIBS, and the ACEEE Hot Water Forum and has written over 50 articles and blog posts on the topics of water, legionella, medical gas, and leadership. Christoph’s professional activities in the industry extend into multiple committees including ASPE Phoenix Chapter, ASPE Society, ASPE Legionella Working Group, ASHRAE Committees, PIPE Trust of Arizona, AWWA Plumbing Premise Committee, among others. He consistently looks to find long-term, holistic solutions that positively impact public health and safety, particularly in the world of water and plumbing. He is a distinguished graduate from the Virginia Military Institute, with a Bachelor of Science in Mechanical Engineering. Christoph grew up in Rochester, Michigan.

About Registration and CEUs:

If you are attending virtually: there is a link to register via the ASPE Education page. Please follow all directions. Using this platform for virtual meetings allows us to streamline the CEU process. So all attendees that plan to join virtually, need to register via the corresponding ASPE Education link. Our meetings will also be listed on the ASPE Education calendar, so you can find registration info there as well. <https://education.aspe.org/>

There is also a passcode that needs to be entered for the virtual meetings now. This passcode is in the email invite as well as listed in the webinar instructions.

If you will attend in person (when we can offer this option): You will need to register using an Eventbrite link that will be in the email. This allows us to know how many people we can expect in person. Thus, allowing us to make sure we maintain the indoor gathering limits imposed by the Governor, and also order enough food for all. For those that attend in person, we will still require sign in/sign out sheets and your CEUs will be submitted to national within 1 week of our event. It may take up to another 2 weeks for the CEUs to show in your ASPE Education log. The PITC does have guest protocols we will have to obey in order to meet there, so please follow all posted signage and procedures.



YOUNG PROFESSIONALS

IN THE KNOW

EMC 45TH ANNIVERSARY HISTORY BOOK NOW AVAILABLE FOR ORDER!

Available in time for the holidays. \$50 Each

Check or Credit Card Accepted

Pick up @ SES or during a Hybrid Chapter Meeting

FREE digital download on the ASPE EMC website.

TABLE TOP SPONSORSHIP PRICING

ASPE Members

- \$200.00 for the 1st table per meeting/per vendor
- \$150.00 for each additional table per meeting/per vendor

Non-Members

- \$250.00 for the 1st table per meeting/per vendor
- \$200.00 for each additional table meeting/per vendor

If a vendor purchases table tops for 3 meetings during the year, a 4th meeting table top will be provided for free.



Commercial Washrooms. Brought to Life.
HANDWASHING & DRYING | ACCESSORIES | PARTITIONS | LOCKERS

CUTTING-EDGE HANDWASHING TAKES SHAPE

The next generation WashBar raises your restroom to new heights by providing touch-free soap, water and drying in an edgy new design for an unforgettable handwashing experience. The single connection point to the sink provides an impressive design element and creates more open space for cleaning.

ADVANTAGES OF THE WASHBAR

- Floating design for a simple and clean aesthetic
- Single connection point to the sink for easier cleaning
- Eliminates the cost and mess of paper towels
- Icons and LED lights to visually orient users
- Smart sensor technology eliminates false activations
- WashBar and bowl work together to keep water in the basin
- Gallon soap capacity to reduce the number of replacements
- Captures soap and water activations for maintenance planning

The new WashBar WB2 is available with the Verge® LVQ basin in Evero® natural quartz, OmniDeck® 5010 in Terreon® solid surface, or pair with a Terreon solid surface or Evero natural quartz undermount basin with the deck or countertop of your choice.



AVAILABLE IN SIX BEAUTIFUL FINISHES



WEST MICHIGAN		WEST MICHIGAN		EAST MICHIGAN		EAST MICHIGAN	
Michael Zago		Rod Cox		Todd Hiler		Ross Beck	
D (248) 960-1147 x 107		D (248) 960-1147 x 116		D (248) 960-1147 x 106		D (248) 960-1147 x 115	
C (616) 293-2121		C (616) 706-1481		C (613) 633-2609		C (734) 673-2119	
E mikez@newcenturysales.com		E rodc@newcenturysales.com		E toddh@newcenturysales.com		E rossb@newcenturysales.com	

www.newcenturysales.com

ALL-IN-ONE WASHBAR



All the fundamentals of handwashing have been thoughtfully designed into Bradley's innovative WashBar.

WASHBAR FEATURES

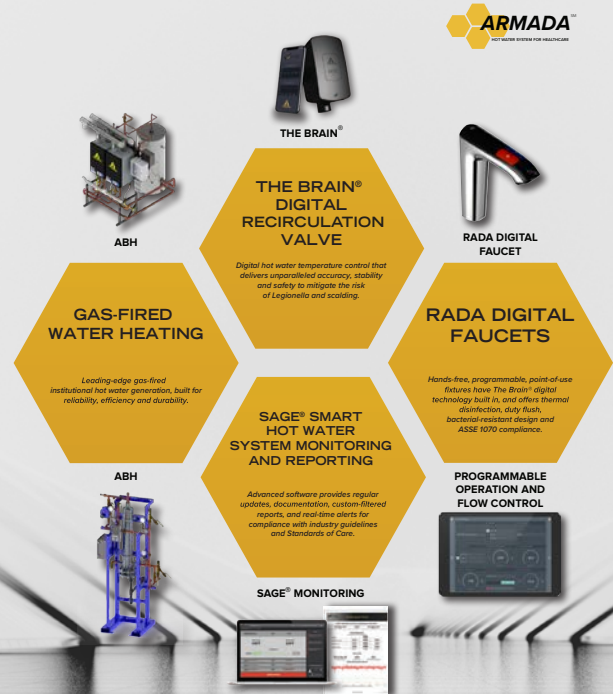
- CLEAN**
 - Touch-free activation
 - Low level LED indicator
 - Gallon (3.8 L) soap capacity
 - Simply replace soap tank – no cleaning or refilling
 - Liquid and foam soap

- RINSE**
 - Touch-free activation
 - 0.5 GPM (1.9 LPM)
 - Ultra-high efficient 0.35 GPM (1.4 LPM) option where water conservation is a necessity

- DRY**
 - Touch-free activation
 - Heated air stream dries hands quickly and efficiently
 - Adjustable speed for quieter hand drying

bradleycorp.com
800 BRADLEY • (1 262 251 6000
W142 N9101 Fountain Boulevard
Menomonee Falls, WI USA 53051
bradleycorp.com/washbar

A TOTAL, STATE-OF-THE-ART HOT WATER SYSTEM, ENGINEERED TO DELIVER A SUPERIOR LEVEL OF USER SAFETY, INFECTION CONTROL AND COMPLIANCE, FROM MECHANICAL ROOM TO THE POINT OF USE.



MERLO ENERGY
Chip.bidigare@merloenergy.com
(586) 256-9822



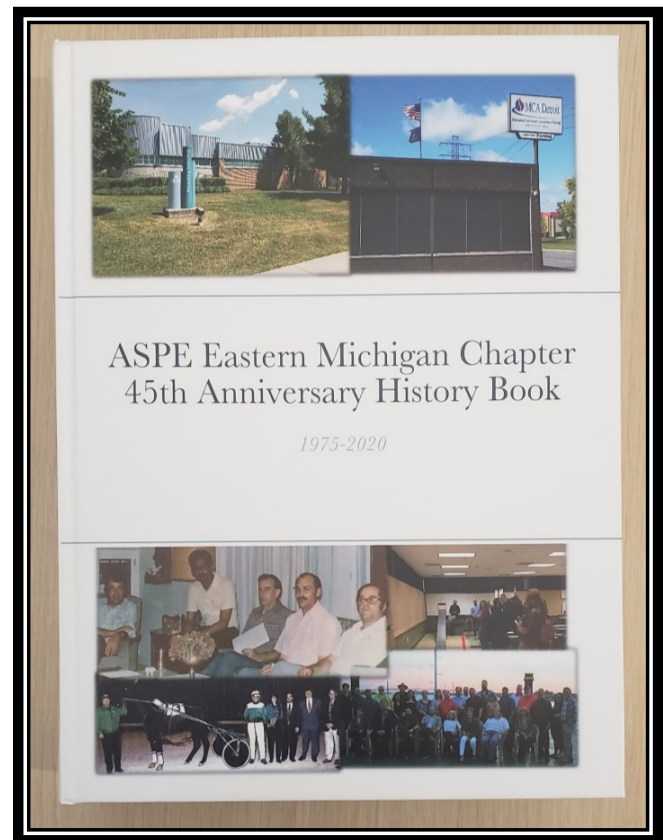
EMC 45TH ANNIVERSARY HISTORY BOOK IS AVAILABLE TO ORDER NOW!

Available in time for the holidays

\$50 EACH

Check or Credit Card
Accepted

Pick-up @ SES or
during a Hybrid
Chapter Meeting



Contact Theresa Card for orders:
vpt.aspe.emc@gmail.com or 248.988.4708



ASPE EASTERN MICHIGAN CHAPTER
WWW.ASPE.ORG/EASTERN-MICHIGAN

VP Technical Report

Theresa Card, P.E., CPD, LEED AP BD+C



Hello from your VP Tech!

Spring is almost here! Though it is hard to look at it that way with the weather still being...winter.

We had a great March meeting with 38 attendees! We learned a lot from our speakers on both rainwater harvesting and interceptors. We also had a lot of fun with our annual NASPE races! If you were not

able to join in person – we encourage you come out. I know the virtual option is nice when work is busy, but there is no substitute for the networking and hands on learning you get by being there live and getting to see the Tabletop Sponsor tables.

THANK YOU **[VE Sales, Balfrey & Johnston and Diversified Sales](#)** for being sponsors at our March meeting. Remember to support those who support the Chapter!

Past Meeting Recordings

Below you will find the link to this program year's recorded meetings. If you would like copies of the pdf handouts, please email me to let me know. I apologize, but no CEUs can be provided for watching meeting recordings. Please note you will likely have to copy the text below and paste into a browser to see the videos – as we have found some cannot click the links directly from the newsletter itself.

If you have missed any of the meetings from the 2019-2020 Program Year you can email me, and I will send you the link or you can look at past newsletters from last year.

September 2021 Presentations Recordings: Right Sizing Plumbing: An Overview and Plumbing 101

- <https://youtu.be/B2jR9wO7JHM>

October 2021 Presentation Recording: Metered Flow vs Traditional Sizing and Utility Rebates Panel Discussion

- <https://youtu.be/mXxpKw7UCrs>

November 2021 Presentation Recording: Right Sizing Water Heaters and Submersible Pumps

- <https://youtu.be/mXxpKw7UCrs>

December 2021 Presentation Recording: Fire Protection – Standpipes, Fire Pumps and Dry Systems

- <https://youtu.be/Xr1jWJ3qnfw>

January 2022 Presentation Recording: 2018 MPC Updates and Michigan Code Promulgation Process

- <https://youtu.be/loceE-uIUfg>

February 2022 Presentation Recording: Right Sizing Hydronics and High Purity Lab Gas Systems

- <https://youtu.be/dAWGGrNzGi0>

March 2022 Rainwater Harvesting and Interceptors

- <https://youtu.be/Hq8iwwAeshk>

April Meeting info:

We hope you can join us for another great meeting in April, whether in person or virtually. See links below to register!

Virtual attendance registration:

<https://education.aspe.org/products/eastern-michigan-chapter-meeting-right-sizing-hot-water-return-design-apr-2022>

In person registration:

<https://www.eventbrite.com/e/aspe-emc-april-2022-technical-program-tickets-248180202667>

April will be a fantastic meeting on “Right Sizing Hot Water Return Design” with **Christoph Lohr, P.E., CPD, LEED AP BD+C, ASSE 12080**. We are bringing Christoph in from Arizona, so we really hope you can make it in person to meet and learn from this renowned speaker!

This presentation and workshop will cover considerations when selecting hot water temperature to include reviewing hot water system routing options, understanding the limitations of “Rules of Thumb” HWR Sizing Methodologies, learning about the “True” Heat Loss Sizing methodology, understanding Hardy-Cross Method and Parallel Piping Systems. We will also review balancing valves types and limitations and review criteria for selecting a recirculation pump.

To get the full bio on Christoph – visit the ASPE EMC yearly program: <https://www.aspe.org/eastern-michigan/program.html>

Hope to see you there!

Cheers!

Sincerely,

Theresa Card

Vpt.aspe.emc@gmail.com

ASPE
Eastern Michigan Chapter WOA
DONATION EVENT!

Spring is in the air! With that – spring cleaning! While you or your friends/spouse/children are cleaning out your drawers – instead of throwing away that make-up you never used or that product you used once and didn’t like – donate it!

We will be collecting items to ship to a local women’s shelter or, if none can be found, Project Beauty Share in Washington.

Items can be dropped off during ASPE meetings or with:

C/O Theresa Card
ASPE EMC WOA Liaison
Strategic Energy Solutions
4000 W. 11 Mile Road, Berkley, MI

Contact Theresa with questions at:
tcard@sesnet.com

Donations will be collected from
February 1 to May 30 (Memorial Day)

WHAT WE WILL BE COLLECTING

New	New or Lightly Used	Lightly Used
Make-up brushes	Moisturizers	Pressed eyeshadow
Lip products/lip liners	Cleansers	Pressed blush
Mascara	Eye creams	Pressed bronzer/highlighters
Eyeliners	Exfoliators	Face primer
Foundations	Primers	Squeeze tube foundations
Concealers	Sunscreen	Airless pump foundations
Deodorant	Face masks	
Razors	Body lotions	
Bar soap	Shower gel	
Toothbrushes	Body spray	
Toothpaste	Perfumes	
Floss/mouthwash	Shampoo, conditioner	
Feminine hygiene	Hair color	
Sample packets	Hair styling products	
Hotel travel-size items		
Makeup bags		
Nail products		
Misc. face tools		

**Lightly used products must be at least ¾ full. Anything that comes in a tub or jar must be new.

ITEMS NOT ACCEPTED

Any item with a wand that has been used or swatched, such as mascara, lip gloss, liquid lip color, liquid eyeliner, foundations and concealers

Loose powders in containers that are without seal, such as mineral powder foundations, blush, eyeshadow, and highlighters

Cream eyeliners, eyeshadow, blushes, bronzers, and highlighters in pots or pans that have been used or swatched

Liquid foundations in bottles with screw-on lids and cream foundations that have been used or swatched

All lip products that have been used or swatched

All eyeliner and lip liners that have been used or swatched

VP Membership Report

Kristin Simoneaux, P.E., CPD, LEED



Hi Everyone! Hope you all are enjoying the weather as it is getting nicer outside. Ever want to be a part of more than one ASPE chapter? We can make that happen!! If you are already a member (or once you become a member and choose your home

chapter (standard dues rate of \$190)), you can join additional chapters (as many as you wish) for only \$80 per chapter. Region 2 chapters are indicated below but we have many beyond what is listed here: <https://www.aspe.org/membership-global-community/chapters/>.

Members can serve on the Board of directors for any of the chapters they join. If you are interested in pursuing this option, please contact me and I can walk you through the process.

Did you know you can get a **discount when you renew your membership?** Renewing for multiple years at a time can save you \$\$\$. If you renew for two years you will receive a 5% discount. If you renew for 3 years you will receive a 10% discount.

First year members: renew early and save! If you renew by the eighth month of your membership, you may receive reduced dues for your second year. Funds are only available for the first 125 members per quarter.

If you or someone you know is interested in becoming a member and taking advantage of the great things ASPE has to offer, please feel free to contact me. Until we meet again, stay healthy!

Kristin Simoneaux, P.E., CPD, LEED AP
Associate / Senior Mechanical Engineer
Direct: (248)336-4760
ksimoneaux@stantec.com

 Buffalo-Niagara	 Central Indiana	 Central Ohio	 Greater Toronto	 Johnstown	 Pittsburgh
 Cleveland	 Eastern Michigan	 Evansville	 Rochester, NY	 Southwestern Ohio	 Western Michigan

Replacing Your Water Heater Every Few Years is Not Our Business Plan



Conquest[®] condensing, gas-fired water heaters are constructed from AquaPLEX[®] duplex stainless steel so they're corrosion-resistant in potable water at any temperature. Available in 199-1000 MBH, Conquest provides even more BTUs in small spaces and fits through a standard 36-inch doorway. With a thermal efficiency of up to 96%, long product life and a 15-year tank and heat exchanger warranty, you can't afford not to have one.

Call R.L. Deppmann or visit our Monday Morning Minutes blog at deppmann.com for information on PVI Water Heaters
800.589.6120



800.784.8326 | pvi.com



ETV Platinum Plus

ELECTRONIC TEMPERING VALVE

Designed for Critical Temperature DHW Application

- Maintains Set Point within +/- 2°F

Safeguard Against High Temperature Conditions

- Optional High Temp Limit Valve
- Alarm Output

Maintenance Free

- Stainless Steel Valve Body reduces Scale Buildup
- External Actuator Eliminates Gasket Maintenance



ETS AND ETS-LT

ELECTRONIC TEMPERING STATION

Pre-wired and Pre-Piped Assembly

- Contains ETV Platinum Plus
- Includes all Fittings, Isolation Valves

Wall Mounted and Floor Mounted

- Minimal Footprint
- Sizes from 3/4" to 4"



Conforms to the following:

ASSE 1017

California Lead Free Plumbing Law

CSA B 125.3 (NSF/ANSI 61 Section 8)



Major/
Lozuaway
& Associates

Major Lozuaway and Associates

Mike Ostrowski

1117 W. Grand Blanc Road

Grand Blanc, MI 48439

Phone: 810-287-6983

Email: moski@lozuaway.com



New Century Sales, Inc.
Manufacturer's Representatives

EAST MICHIGAN
1715 Traditional Dr.
Commerce Township, MI 48390
P (248) 960-1147 F (248) 960-1149

WEST MICHIGAN
550 36th St. SE
Grand Rapids, MI 49548
P (616) 600-9660

 AMTROL Expansion Tanks www.amtrol.com	 BASCO Shower Doors www.bascoshowerdoor.com	 Bradley Washroom Solutions www.bradleycorp.com	 CALEFFI Hydronic Solutions Hydronic Accessories www.caleffi.com/usa/en-us	 COPPER PRESS ISOTUBI USA Plumbing Fittings www.copperpress.com www.isotubi-usa.com
 FAIRMONT designs Bath Furniture www.fairmontdesigns.com	 General Wire Spring Company Sewer Cleaning Machines www.drainbrain.com	 genova PVC Products www.genovaproducts.com	 IBC Better Boilers www.ibcboiler.com	 Just manufacturing EST. 1993 Stainless Steel Sinks www.justmfg.com
 MATCO NORCA Valves and Fittings www.matco-norca.com	 MYERS Water and Waste Pumps www.femyers.com	 Oasis Fiberglass & Acrylic Tub & Showers www.oasisbath.com	 OASIS Oasis Water Coolers www.oasiscoolers.com	
 OATEY SCS Supply Chain Services www.oatey.com	 Panasonic USA Bath Fans https://na.panasonic.com/us/home-living-solutions/ventilation-indoor-air-quality/	 PEX GUN AUTOMATIC PEX PIPE TIE TOOL Pipe Installation Tools https://pexgun.com/		
 REHAU Unlimited Polymer Solutions PEX Plumbing Products www.rehau.com/us-en	 Rheem RUUD Water Heaters www.rheem.com www.ruud.com	 STRASSER woodenworks Bathroom Vanities & Cabinets www.strasserwood.com	 TURBOTORCH Brazing & Soldering https://www.esabna.com/us/en/products/gas-equipment/brazing-and-soldering/index.cfm	
 StanleyBlack&Decker DEWALT www.dewalt.com IRWIN TOOLS www.irwin.com LENOX www.lenoxtools.com		 LIXIL Link to Good Living American Standard www.americanstandard-us.com DXV www.dxv.com FIAT PRODUCTS www.fiatproducts.com GROHE www.grohe.us/en_us		

www.newcenturysales.com



R. L. Deppmann Company

Job Title: Sales Engineer

Reports To: Engineering Sales Manager

About Deppmann

Our Company focuses on helping people make better decisions. We are a company that is responsive to our customer and understands how our product work and interact in hydronic and plumbing systems. Our company culture is shaped by our Core Values: Knowledge, Empowerment, and Responsiveness. We achieve this through selling hydronic and plumbing equipment in Michigan and Ohio. Our Company is 100% employee owned.

Scope: Sales members utilize their technical knowledge of hydronic, steam and plumbing systems and sales experiences to help provide sales & support for the products represented by R.L. Deppmann. The Engineering Outside Salesperson focuses on the projects during the development and design phases, being a resource to our engineers in developing system designs and equipment selections.

Who We Are Looking For:

Looking for someone that enjoys collaborating with engineers and fellow team members to provide the best solution for any given project. The successful candidate enjoys teaching as well as learning. She/He will seek out opportunities to collaborate and loves to solve problems using her/his technical skills.

Responsibilities Include:

- **Selling – Pursuing the Order:**
 - Close the order at the engineer level (specifications and schedules)
 - Negotiate pricing
 - Coordinate quote
 - Manage vendors
 - Engineer/systems design
 - Internal collaboration/coordination
 - Follow-up on leads from Customer Service & Inside Sales
 - Respond to pricing requests
 - Joint sales with customers
 - Exceed sales goals for sales territory

- **Customer Management:**
 - Problem solving
 - Conduct training
 - Meet with customers: relationship building
 - On site tech support
 - Visit jobsites

March 2021



- **Internal Administrative Activities:**
 - Acquire product/industry/technical knowledge
 - Develop and analyze sales plan
 - Weekly teleconference call
 - Attend department offsite meeting
 - Utilize CRM to provide regular updates on projects & customers
 - Personal development
 - Backup Estimation

- **Marketing:**
 - Attend social events: golf outings, trade shows
 - Participate in professional organizations: i.e. ASHRAE, ASPE

- **Miscellaneous**
 - Commitment to Ongoing Personal Training / Development
 - Other duties may be assigned

Requirements:

Strong Computer Skills in Microsoft Office Suite, Technical background in HVAC (Degree Preferred), Ability to Multi-Task, Strong Desire to Learn, Take on responsibility, Great People Skills, Detail Oriented.

Travel:

Local travel required within Mid-Michigan & Traverse City, MI area territory, 10% travel outside of sales territory. A valid driver's license is required.

If you have these skills and the desire to join a driven team, send resume to Human Resources at jobs@deppmann.com

March 2021

TOPGOLF AUBURN HILLS: QuantumFlo Booster, Beeco RPZ, & Beeco Automatic Control Valve



GM Flint Assembly Plant: Hubbell Model EMV120-85-1.5SLA-A-XX Electric Tepad Water Heater



Velocity Boiler, Previously Crown Boiler

CRANE PUMPS & SYSTEMS

CRANE PUMPS & SYSTEMS



BOILERS & COMBINATION UNITS

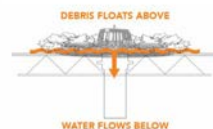
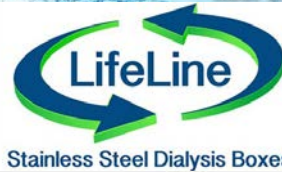
RIELLO

Energy For Life



QUALITY WATER & AIR: (248)589-8010

MIFAB PRODUCT LINE



MAKE
ROOF & SCUPPER
DRAINS
UN-CLOGGABLE
Click to see
Operation Video!

When you need to flex some serious muscle, bring out the big guns.



Edge
HP IRON

Step up to the new Edge HP Iron for aggressive DWV applications.

SEE THE DETAILS AT CHARLOTTEPIPE.COM/EDGEHPIRON

CHARLOTTE
PIPE AND FOUNDRY COMPANY
You can't beat the system.

MARCH MEETING

THANK YOU TO OUR ATTENDEES!

Pamela Hartsell
 E. Havran
 Nicklaus Heppner
 John Johnson
 Scott Johnston
 Mike Kennedy
 Hank Koppelo
 Jeremy Martin

Phil McCrory
 Michael Melaragni
 Armando Nunez
 Joshua Pedraja
 Brenda Pesmark
 Gerry Potapa
 Ron Ross
 Emily Schwarzkopf

Kristin Simoneaux
 Ryan Suh
 Ron Sykes
 Michael Taggart
 Rob Teifer
 Bob Thomas
 Ben Washington
 Cindy Zatto

MARCH MEETING PHOTOS



Congratulations to the 2020 ASPE EMC Board for being recognized for leadership on our 45th anniversary!

MARCH MEETING PHOTOS



Michael Gauthier of Highland Tank presented Storm Water Retention and Reuse



MARCH MEETING PHOTOS



Silvano Ferrazzo of Zurn presented Interceptors - Types, Application and Sizing



Silvano Ferrazzo of Zurn Site-Works presented on Interceptors and received certificate of appreciation from ASPE EMC President Pam Hartsell

MARCH MEETING PHOTOS



Our NASPE Race was filled with excitement!



NASPE Race Winners Chip Bidigare, Theresa Card and Bob Thomas

MegaPress® G

Press safer.
**Press
bigger.**



Connected in quality.

Quick, safe connections on large diameter gas lines.

Viega MegaPress(R)G requires no open flames or added cost of fire watch, so projects are safer and more profitable. Installers can secure gas pipe up to 4" in 16 seconds or less, saving 60-90% on labor costs. That's why professionals choose MegaPressG - the trusted press connection method approved for gas lines ½" to 4".

Carl Petitt
Technical Manager
(614) 852-2691
carl.petitt@viega.us

Michael Norgan
District Sales Manager
(989) 415-2431
michael.norgan@viega.us

ALL-IN-ONE SCALD PROTECTION



Certified.



420-T Series

Now there's no need to install a thermostatic mixing valve below the sink. The new 420-T Series combines Chicago Faucets durability with integrated scald protection. The result is a solid, easy-to-install restroom faucet that complies with ASSE 1070 requirements. With the 420-T, everything you need to meet current building codes and protect users against scalding is built right into the faucet.

Visit chicagofaucets.com or call your local representative for more information.

Taggart-Knight Group
248/553-4388
info@taggartknight.com





EDUCATION



PUBLIC VENUES

COMMERCIAL OFFICES

T&S IS HERE >

T&S is proud to be a trusted name across a wide range of markets — staying at the forefront of today's evolving industry and providing a vast selection of reliable solutions that meet required codes and compliances.

Learn more at tsbrass.com/markets.

Find us in



HEALTHCARE



T&S plumbing products represented in Eastern Michigan by: Diversified Spec Sales - 248-398-2400



New Century Sales, Inc.
Manufacturer's Representatives



COPPERPRESS® SYSTEM BENEFITS

- Size range from 1/2" to 4"
- Green visual application bands
- Consistent wall thickness on all products
- Leak before press systems
- Less equipment required
- Compatibility of fittings and tools

www.copperpress.com

Approvals & Certifications

- NFS ANSI/CAN 61
- UPC
- cUPC
- IPC
- IAPMO PS-117
- ICC-ES-PMG
- ASME B16.51



ISOTUBI USA

Stainless Steel Press Solutions

<https://isotubi-usa.com>

Represented by New Century Sales:

WEST MICHIGAN

Michael Zago
C (616) 293-2121

E mikez@newcenturysales.com

WEST MICHIGAN

Rod Cox
C (616) 706-1481

E rodc@newcenturysales.com

EAST MICHIGAN

Todd Hiler
C (513) 633-2609

E todhd@newcenturysales.com

EAST MICHIGAN

Ross Beck
C (734) 673-2119

E rossb@newcenturysales.com

www.newcenturysales.com

ASPE Mentoring Program

The Women of ASPE are excited to introduce ASPE's new Mentoring Program!

This program, which is available to all members of the Society, has been designed to connect ASPE members who have a particular skill set (mentor) with individuals (mentee) who are searching to acquire the same skills to develop and make progress toward their personal and professional goals.

Who Is a Mentor?

A mentor is someone who can help the mentee develop skills for success and long-range career planning, is able to be a good listener, is willing to share experiences and views, is willing to commit time and effort, provides an "open door" to questions and problems, points out both strengths and opportunities for improvement, and has a vested interest in the growth and development of their mentee.

Benefits to the mentor:

- Satisfaction in helping someone mature, progress, and achieve goals
- Meeting and sharing experiences with other mentors
- Personal ongoing support to help the mentee succeed
- Personal fulfillment through contribution to the Society and the individual

Who Is a Mentee?

Having a mentor can contribute to a successful and satisfying career. Without a mentor, that learning occurs mostly through trial and error. With a mentor, even experienced professionals can benefit from the experiences and expertise of someone who has withstood the trial and can help the mentee avoid the mistakes. Similarly, those new to the industry will discover that being a mentee shortens the learning curve for acquiring the skills and knowledge most critical to a fruitful career.

Benefits to the mentee:

- Discover new talents about yourself
- Career satisfaction
- Expand your personal network
- Maximize your strengths

For more information click below:

<https://connect.aspe.org/aspe-mentor-match/mentoring>



intellihot™ Intelligent Hot Water Supply Boilers
Endless Water. Zero Waste.

Heating Boilers
Hot Water Supply
Pool/Spa Heaters
Storage Tanks
Complete Parts Stock



High Efficiency Water Heaters
High Efficiency Heating
Boilers
Custom System Solutions

Snowmelt Systems
Radiant Floorheat Systems



Gas Fired Heat Pumps
Heat Recovery Chillers



Natural Gas / Propane / Electric
3,000 to 4,000,000 BTU's
- ALSO -
Holby Thermostatic Mixing Valves



KERR PUMP AND SUPPLY
www.kerrpump.com

Jamie Caporosso: jamie@kerrpump.com
12880 Cloverdale, Oak Park, MI 48237
Ph.: (248) 543-3880 Fax: (248) 543-3236

Liquid Pumps
Vacuum Pumps
Heat Exchangers
Blowers
Related Equipment
and Accessories

Sales • Service • Repair



AURORA FIRE PUMPS

Compact Fire Pump Systems

- UL Listed/FM Approved Aurora Fire Pump
- UL Listed/ FM Approved Fire Pump Controller
- Capacities of 50-750 Gpm.
- Pressures of 40-160 Psi.
- Aurora Model PVM (close coupled to an ODP motor.)

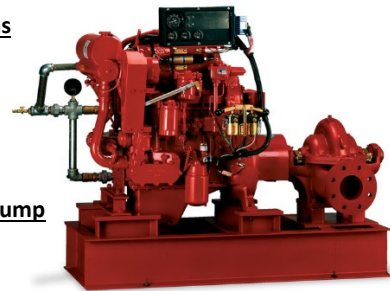
Vertical Split Case Electric Drive Fire Pump

- Electric Driven
- For Commercial, Industrial and Marine use only.
- UL Listed/ FM Approved/NFPA-20 Design

Horizontal Split Case Diesel Drive Fire Pump

- Diesel and Electric driven available.
- Flows at 250 gpm to 5000 gpm.
- Pressures available up to 490 Psi.

PLEASE INQUIRE TO KERR PUMP FOR PRICING,
SELECTIONS, OR TESTING ON EXISTING.
ALSO, PLEASE SEE www.aurorapump.com



Michigan's Oldest Supplier of Pumps and Process Equipment - 1905

Code Study and Development Group of Southeastern Michigan

Item No.	Description	Price Each*	Order Date
3200S18MI	2018 MI Plumbing Code	\$ 89.50	
3300S18MI	2018 MI Mechanical Code (Not Yet Available)	\$ 89.50	PO Number
3200S18	2018 IPC without Commentary	\$ 86.00	(If required)
3210S18	2018 IPC with Commentary	\$ 112.00	
3300S18	2018 IMC without Commentary	\$ 86.00	
3310S18	2018 IMC with Commentary	\$ 112.00	
3600S18	2018 IFGC without Commentary	\$ 86.00	
3610S18	2018 IFGC with Commentary	\$ 112.00	
3000S18	2018 International Building Code	\$ 130.00	
3000S15MI	2015 MI Building Code	\$ 139.00	
3100S15MI	2015 MI Residential Code	\$ 126.00	
3550S15MI	2015 MI Rehab for Existing Bldgs	\$ 90.00	
3800S15MI	2015 MI Energy Code	\$ 48.00	
3600S15	2015 IFGC without Commentary	\$ 84.00	
3310S15	2015 IMC with Commentary	\$ 109.00	
		\$ -	

- **Payment MUST accompany order / verify your preferred delivery method**
- **Credit cards, cash or company check accepted.**
- Dann Holmes - buildingwaterhealth@outlook.com or (248) 921-0582
- If orders are to be mailed, call Dann and you will be advised of additional freight charges.

• **Make check payable to: Code Study & Development Group of SE Michigan**

Mailing Address: **Will be given upon placement of order**

Item No.	Description	Quantity	Unit Price	Item Total	Status
				\$ -	
				\$ -	
				\$ -	
				\$ -	
				\$ -	
				\$ -	
				\$ -	
				\$ -	
				\$ -	
				\$ -	

Total books subject to incoming ICC Frgt charges **0**

Client Information		Order Details	
Company		Sub-Total	\$ -
Address		ICC Frgt	\$ -
City		USPS Frgt	\$ -
State		MI Sales Tax	\$ -
Zip-Code		Invoice Total	\$ -
Contact Information			
Attention		Received By:	_____
E-Mail			
Phone			

Check No. _____ or Cash _____ Date Paid _____
 Credit Card Approval No. _____

***Supersedes all pricing forms printed before October 19, 2021**

2021 Code Study Order Form

BALFREY & JOHNSTON, INC.

Manufacturers' Representatives
 13050 Northend
 Oak Park, MI 48237
 Ph 313 864-2800 Fax 313 864-7219
George D. Johnston: george@balfrey-johnston.com
 balfrey-johnston.com

J.W. SALES, INC.

Manufacturers' Representative
 1570 E. Highwood
 Pontiac, MI 48340
 O: 248.745.8590 F: 248.745.0889
Thomas Huck: thomash@jwsalesinc.net
 C: 248-602-1575
Michael Fedorinchik: mikef@jwsalesinc.net
 Jwsalesinc.net

BURKE AGENCY, INC.

Manufacturers' Representatives
 2605 E. Oakley Park Road, Suite A,
 Commerce Twp, MI 48390
 Ph 248 669-2800 Fax 248 669-3310
Brian Burke, Peter Lapham, John Taylor
 bburke@burkeagency.com
 burkeagency.com

KERR PUMP AND SUPPLY

Manufacturers' Representatives
 12880 Cloverdale
 Oak Park, MI 48237
 Ph 248 543-3880 Fax 248 543-3236
Jamie Caporosso: jamie@kerrpump.com
 kerrpump.com

DALE PRENTICE COMPANY

Manufacturers' Representatives &
 Application Engineering Solutions Provider
 26511 Harding Avenue
 Oak Park, MI 48237
 Ph 800 536-4700 Fax 248 339-5559
Michael Cullen: mcullen@prenticeco.com
 Mobile 248 302-5924
 prenticeco.com

LOCHINVAR

High Efficiency Water Heaters and Boilers
 45900 Port Street
 Plymouth, MI 48170
 Ph 734 454-4480 Fax 734 454-1790
Jason Loverich: jloverich@lochinvar.com
 lochinvar.com

DAVE WATSON ASSOCIATES, INC.

Manufacturers' Representatives
 1325 W. Beecher St.
 Adrian, MI 49221
 Ph 517 263-8988 Fax 517 263-2328
Rick Johnston: rjohnston@davewatson.biz
 davewatson.biz

MAJOR/LOZUAWAY & ASSOCIATES, INC.

Manufacturers' Representatives
 1117 W. Grand Blanc Rd.
 Grand Blanc, MI 48439
 Ph 810 234-1635 Fax 810 234-8389
Mike Ostrowski: moski@lozuaway.com
 Mobile 810 287-6983
Bill Campbell, PE: bill@lozuaway.com
 Mobile 810-287-0029

**DIVERSIFIED SPEC. SALES, INC./
HOWLEY AGENCY SALES CO.**

Manufacturers' Representative
 13261 Northend Ave.
 Oak Park, MI 48237-3265
Brendan Burdette: bburdette@dsshowley.com
 Ph 248 398-2400 Fax 248 547-4905
 diversifiedspec.com

NEW CENTURY SALES, INC.

Manufacturers' Representatives
 1715 Traditional Dr.
 Commerce Township, MI 48390
 Ph 248 960-1147
Ross Beck: rossb@newcenturysales.com
 Mobile 734 673-2119
Todd Hiler: toddh@newcenturysales.com
 Mobile 513 633-2609
 newcenturysales.com

HS/BUY VAN ASSOCIATES, INC.

Manufacturers' Representatives
 56 S. Squirrel
 Auburn Hills, MI 48326
Jarrett Armstrong
 Ph 888 472-8982 Fax 248 852-0298
 info@hsbuyvan.com
 hsbuyvan.com

PAULA. BAKER

ASSE Region #4 Director - Mid West
 ASSE International
 18927 Hickory Creek Drive, Suite 220
 Mokena, IL 60448
 Ph 313 399-3072 Fax 248 585-1437
Paul Baker: paul.baker@ualocal98jatc.org
 www.asse-plumbing.org

PERFORMANCE ENGINEERING GROUP

Engineered Water Products
32955 Industrial Rd.
Livonia, MI 48150

Alan Deal: adeal@performanceengineering.com
Ph 734 266-5300 Fax 734 266-5310
performanceengineering.com

R.L. DEPPMANN COMPANY

Manufacturers' Representatives
46575 Magellan Drive
Novi, MI 48377

Gerry Potapa Jr., CPD, Paul Prentice, LEED AP®
Mark Fine, LEED AP®, Chris Lieder
Ph 800 589-6120 Fax 248 354-3763
sales@deppmann.com
deppmann.com

PROGRESSIVE PLUMBING SUPPLY

Wholesale Distributor
31239 Mound Road
Warren, MI 48092

Ph 586 756-8662 Fax 586 756-9077
ppsupplyco.com

Locations: Warren, Detroit, Mt. Clemens, and Oxford

TAGGART-KNIGHT GROUP

Manufacturers' Representatives
37686 Enterprise Ct.
Farmington Hills, MI 48331

Gary O. Taggart
Ph 248 553-4388 Fax 248 553-4653
info@taggartco.com
taggartknight.com

QUALITY WATER & AIR, INC.

Manufacturers' Representative
1402 Souter
Troy, MI 48083

Georgann Kummer, WBE
Ph 248 589-8010 Fax 248 589-8016
qualitywaterair@cs.com
qualitywaterair.com

V. E. SALES COMPANY

V. E. Sales is your source for
the finest quality flow control solutions.
25200 Jefferson Ave.
St. Clair Shores, MI 48081

Thomas Van Egmond
Ph 586 774-7760 Fax 586 774-1490
vesalesinc.com

**INCREASE
EXPAND
GROW
MULTIPLY**

Place your ad here and expand your company!



ASPE EMC WILL BE HOLDING A HYBRID MEETING THIS MONTH

2021-2022 ASPE EMC Board

President

Pam Hartsell, CPD, PMP
Strategic Energy Solutions
4000 W. Eleven Mile Rd.
Berkley, MI 48072
(248) 399-1900 x 222
Fax: 399-1901
president.aspe.emc@gmail.com

VP Technical

Theresa Card, P.E., CPD,
LEED AP BD+C
Strategic Energy Solutions
4000 West 11 Mile Rd
Berkley, MI 48072
(248) 399-1900 ext 223
vpt.aspe.emc@gmail.com

VP Legislative

William Grayzar, CPD
28150 Greenfield Rd.
Southfield, MI 48076
(248)569-1430 ext.333
bill@dsdonline.com

VP Membership

Kristin Simoneaux, P.E., CPD,
LEED AP
2338 Coolidge Hwy. #100
Berkley, MI 48072
(248) 336-4700
kristin.simoneaux@stantec.com

VP Education

Theresa Card, P.E., CPD,
LEED AP BD+C
Strategic Energy Solutions
4000 West 11 Mile Rd
Berkley, MI 48072
(248) 399-1900 ext 223
vpt.aspe.emc@gmail.com

Treasurer

Rachel Gendich
Strategic Energy Solutions
4000 W. Eleven Mile Rd.
Berkley, MI 48072
(248) 399-1900
Fax: 399-1901
treasurer.aspe.emc@gmail.com

Administrative Secretary

Brianne Hall, P.E., CPD,
LEED AP BD+C, GGP
FTC&H
39500 Mac Kenzie Dr. Suite 100
Novi, MI 48377
(248) 324-4780
bhall@fishbeck.com

Corresponding Secretary

George Johnston II
13050 Northend Ave
Oak Park, MI 48237
(313) 864-2800 Fax: 864-7219
george2@balfrey-johnston.com

Chaper Affiliate/Liaison

Dann Holmes
(248) 921-0582
r2al@aspe.org

AYP Liaison

George Bellman
Strategic Energy Solutions
4000 W. Eleven Mile Rd.
Berkley, MI 48072
(248) 399-1900 x222
Gbellman72@gmail.com

WOA Liaison

Theresa Card, P.E., CPD,
LEED AP BD+C
Strategic Energy Solutions
4000 West 11 Mile Rd
Berkley, MI 48072
(248) 399-1900 ext 223
allethe@gmail.com

Directors

Michael Melaragni, CPD
38958 Lapham Drive | Livonia, MI
48154-1014
(734) 591-9339
mjmelaragni@yahoo.com

Kari Rosteck

(313) 318-6555
kari.rosteck@gmail.com

John Nussbaum, IPP, FASSE,

FASPE
(248) 866-1400
jrnussbaum@comcast.net



SPONSOR ADVERTISING OPPORTUNITY INFORMATION

ASPE EMC News is published 9 times per year - September through May.

Yearly advertising for a Business Card ad, which also includes a full Line Card in our sponsors guide:
\$200.00 for members and \$250.00 for non-members.

Graphic Ads - Full Year (9 Issues): Quarter page - \$250.00 ○ Half page - \$350.00 ○ Full page - \$550.00

Checks should be made payable to ASPE EMC and mailed to: Rachel Gendich – Treasurer
c/o Strategic Energy Solution, 4000 W. Eleven Mile Rd., Berkley, MI 48072

Email all digital artwork to: Theresa Green, Newsletter Editor at: theresa.m.green@outlook.com

Circulation 260 - Distributed to: Engineers, Contractors, Inspectors, and other industry professionals in Michigan.

PAY FAST, PAY EASY
Secure Payments Accepted By

